

Home data report

3108 Tulip Tree Place, Cherry Hill, Dumfries, Prince William County, Virginia, United States, 22026



**Total Area: 3332 sq. ft**

Basement 1: 740 sq. ft, 1st Floor: 1345 sq. ft, 2nd Floor: 1247 sq. ft

Excluded: Utility 154 sq. ft, Porch 142 sq. ft, Deck 166 sq. ft, Fireplace 9 sq. ft, Open to below 61 sq. ft, Low ceiling 4 sq. ft, Walls: 249 sq. ft

Property summary



**3**  
Floors



**5**  
Bedrooms



**3**  
Bathrooms

Home data report

**3108 Tulip Tree Place, Cherry Hill, Dumfries, Prince William  
County, Virginia, United States, 22026**



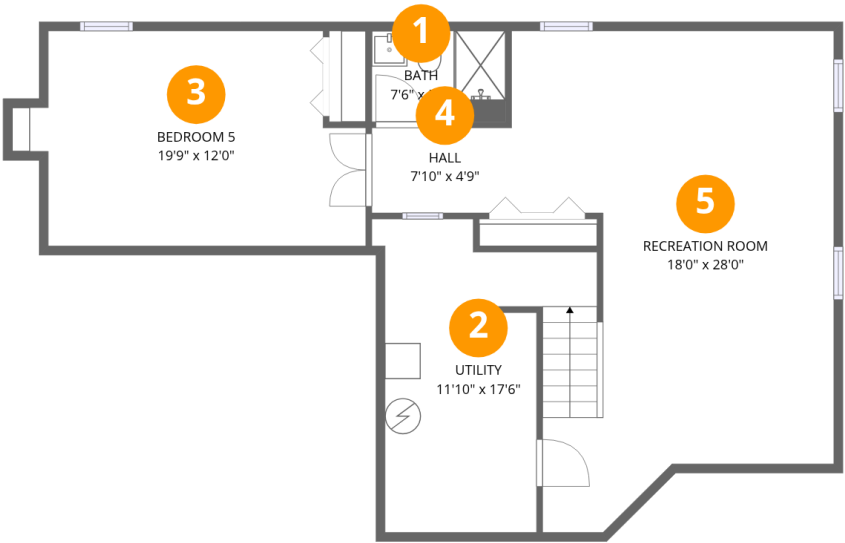
**1**  
Half baths



**1**  
Garages

Home data report

3108 Tulip Tree Place, Cherry Hill, Dumfries, Prince William County, Virginia, United States, 22026

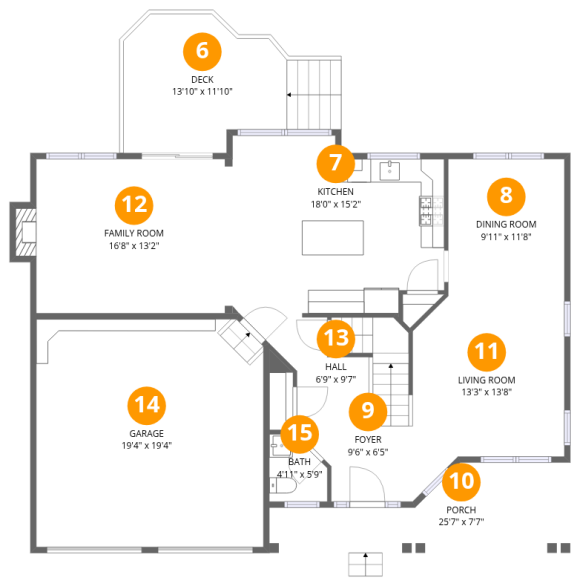


Room dimensions

Floor 1 Below grade Total:740sqft    Excluded: 154sqft

#		Dimensions	sqft	Counted as living area
1	Bath	7'6" x 5'1"	38 sq. ft	Yes
2	Utility	11'10" x 17'6"	208 sq. ft	No
3	Bedroom 5	19'9" x 12'0"	238 sq. ft	Yes
4	Hall	7'10" x 4'9"	37 sq. ft	Yes
5	Recreation Room	18'0" x 28'0"	505 sq. ft	Yes

3108 Tulip Tree Place, Cherry Hill, Dumfries, Prince William County, Virginia, United States, 22026

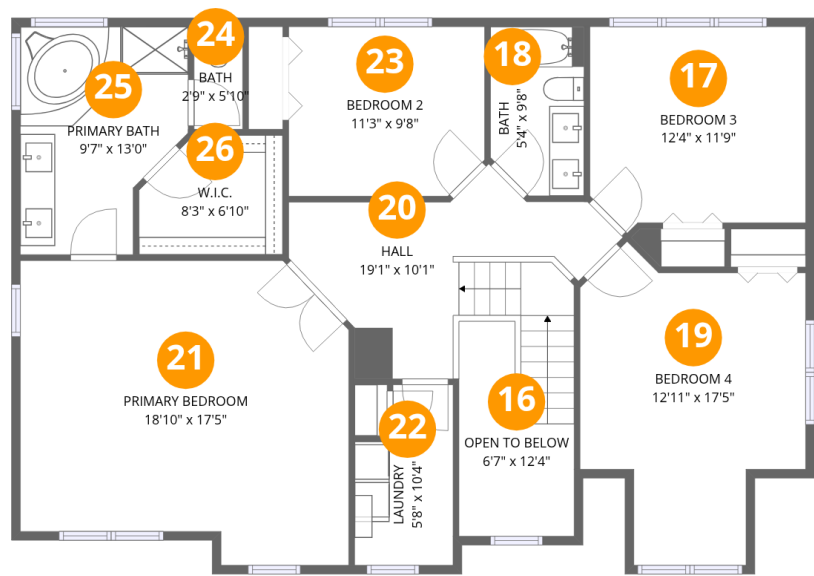


Room dimensions

Floor 2 Total:1345sqft    Excluded: 317sqft

#		Dimensions	sqft	Counted as living area
6	Deck	13'10" x 11'10"	164 sq. ft	No
7	Kitchen	18'0" x 15'2"	272 sq. ft	Yes
8	Dining Room	9'11" x 11'8"	115 sq. ft	Yes
9	Foyer	9'6" x 6'5"	61 sq. ft	Yes
10	Porch	25'7" x 7'7"	195 sq. ft	No
11	Living Room	13'3" x 13'8"	181 sq. ft	Yes
12	Family Room	16'8" x 13'2"	219 sq. ft	Yes
13	Hall	6'9" x 9'7"	65 sq. ft	Yes
14	Garage	19'4" x 19'4"	374 sq. ft	Yes
15	Bath	4'11" x 5'9"	28 sq. ft	Yes

3108 Tulip Tree Place, Cherry Hill, Dumfries, Prince William County, Virginia, United States, 22026



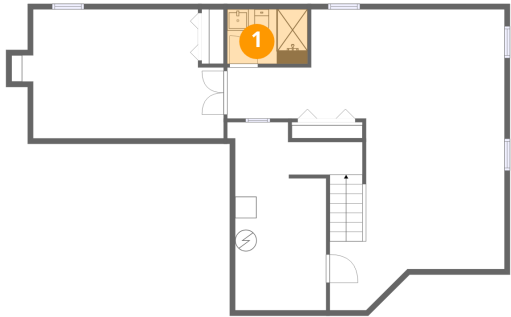
Room dimensions

Floor 3 Total:1247sqft    Excluded: 65sqft

#		Dimensions	sqft	Counted as living area
16	Open To Below	6'7" x 12'4"	81 sq. ft	No
17	Bedroom 3	12'4" x 11'9"	145 sq. ft	Yes
18	Bath	5'4" x 9'8"	52 sq. ft	Yes
19	Bedroom 4	12'11" x 17'5"	225 sq. ft	Yes
20	Hall	19'1" x 10'1"	193 sq. ft	Yes
21	Primary Bedroom	18'10" x 17'5"	328 sq. ft	Yes
22	Laundry	5'8" x 10'4"	58 sq. ft	Yes
23	Bedroom 2	11'3" x 9'8"	109 sq. ft	Yes
24	Bath	2'9" x 5'10"	16 sq. ft	Yes
25	Primary Bath	9'7" x 13'0"	125 sq. ft	Yes
26	W.I.C.	8'3" x 6'10"	56 sq. ft	Yes

3108 Tulip Tree Place, Cherry Hill, Dumfries, Prince William County, Virginia, United States, 22026

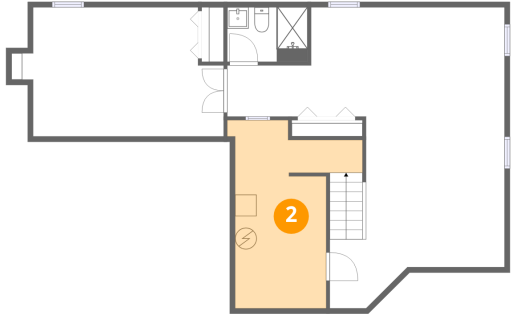
1 Floor 1 - Bath



Dimensions: 7'6" x 5'1"  
Area: 38 sq. ft  
Counted as living area: Yes

Heated: Yes  
Finished: Yes  
Enclosed: Yes  
Contiguous: Yes  
Permitted: Yes  
Wet space: Yes  
Addition: No  
Conversion: No

2 Floor 1 - Utility

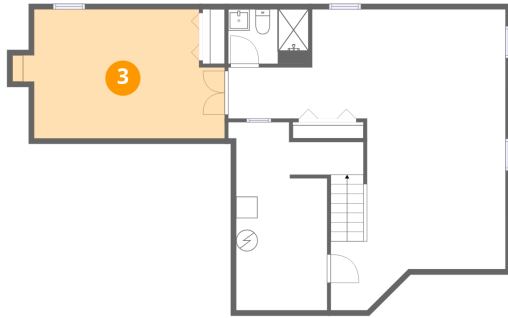


Dimensions: 11'10" x 17'6"  
Area: 208 sq. ft  
Counted as living area: No

Heated: Yes  
Finished: No  
Enclosed: Yes  
Contiguous: Yes  
Permitted: Yes  
Wet space: No  
Addition: No  
Conversion: No

3108 Tulip Tree Place, Cherry Hill, Dumfries, Prince William  
County, Virginia, United States, 22026

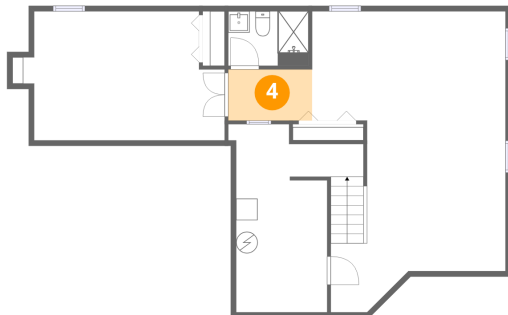
### 3 Floor 1 - Bedroom 5



Dimensions: 19'9" x 12'0"  
Area: 238 sq. ft  
Counted as living area: Yes

Heated: Yes  
Finished: Yes  
Enclosed: Yes  
Contiguous: Yes  
Permitted: Yes  
Wet space: No  
Addition: No  
Conversion: No

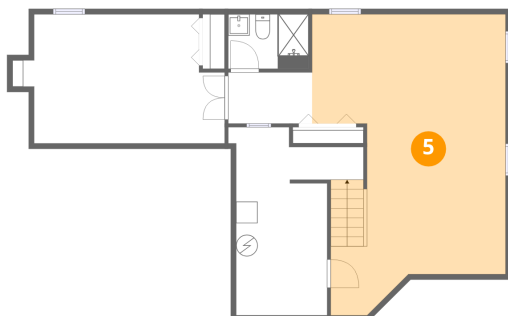
### 4 Floor 1 - Hall



Dimensions: 7'10" x 4'9"  
Area: 37 sq. ft  
Counted as living area: Yes

Heated: Yes  
Finished: Yes  
Enclosed: Yes  
Contiguous: Yes  
Permitted: Yes  
Wet space: No  
Addition: No  
Conversion: No

### 5 Floor 1 - Recreation Room

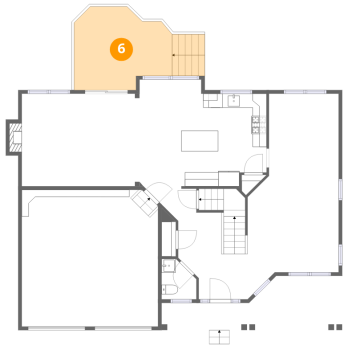


Dimensions: 18'0" x 28'0"  
Area: 505 sq. ft  
Counted as living area: Yes

Heated: Yes  
Finished: Yes  
Enclosed: Yes  
Contiguous: Yes  
Permitted: Yes  
Wet space: No  
Addition: No  
Conversion: No

3108 Tulip Tree Place, Cherry Hill, Dumfries, Prince William  
County, Virginia, United States, 22026

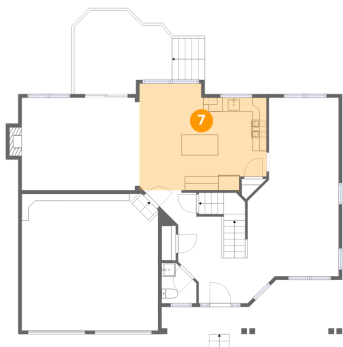
6 Floor 2 - Deck



Dimensions: 13'10" x 11'10"  
Area: 164 sq. ft  
Counted as living area: No

Heated: No  
Finished: No  
Enclosed: No  
Contiguous: Yes  
Permitted: Yes  
Wet space: No  
Addition: No  
Conversion: No

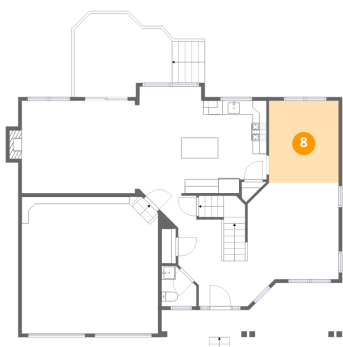
7 Floor 2 - Kitchen



Dimensions: 18'0" x 15'2"  
Area: 272 sq. ft  
Counted as living area: Yes

Heated: Yes  
Finished: Yes  
Enclosed: Yes  
Contiguous: Yes  
Permitted: Yes  
Wet space: No  
Addition: No  
Conversion: No

8 Floor 2 - Dining Room



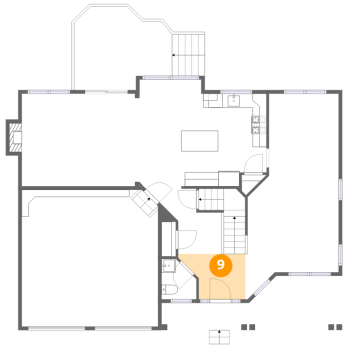
Dimensions: 9'11" x 11'8"  
Area: 115 sq. ft  
Counted as living area: Yes

Heated: Yes  
Finished: Yes  
Enclosed: Yes  
Contiguous: Yes  
Permitted: Yes  
Wet space: No  
Addition: No  
Conversion: No



3108 Tulip Tree Place, Cherry Hill, Dumfries, Prince William  
County, Virginia, United States, 22026

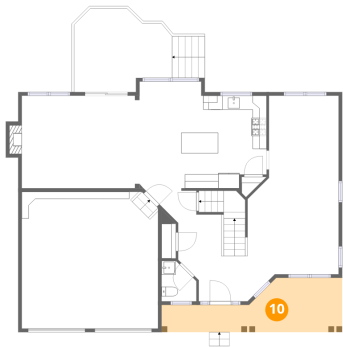
## 9 Floor 2 - Foyer



Dimensions: 9'6" x 6'5"  
Area: 61 sq. ft  
Counted as living area: Yes

Heated: Yes  
Finished: Yes  
Enclosed: Yes  
Contiguous: Yes  
Permitted: Yes  
Wet space: No  
Addition: No  
Conversion: No

## 10 Floor 2 - Porch



Dimensions: 25'7" x 7'7"  
Area: 195 sq. ft  
Counted as living area: No

Heated: No  
Finished: No  
Enclosed: No  
Contiguous: Yes  
Permitted: Yes  
Wet space: No  
Addition: No  
Conversion: No

## 11 Floor 2 - Living Room



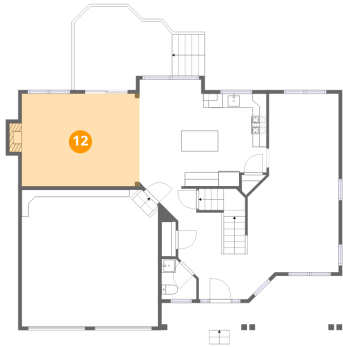
Dimensions: 13'3" x 13'8"  
Area: 181 sq. ft  
Counted as living area: Yes

Heated: Yes  
Finished: Yes  
Enclosed: Yes  
Contiguous: Yes  
Permitted: Yes  
Wet space: No  
Addition: No  
Conversion: No

3108 Tulip Tree Place, Cherry Hill, Dumfries, Prince William  
County, Virginia, United States, 22026

**12** Floor 2 - Family Room

---

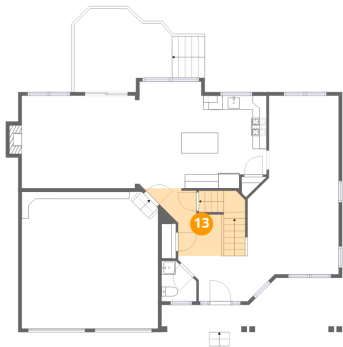


Dimensions: 16'8" x 13'2"  
Area: 219 sq. ft  
Counted as living area: Yes

Heated: Yes  
Finished: Yes  
Enclosed: Yes  
Contiguous: Yes  
Permitted: Yes  
Wet space: No  
Addition: No  
Conversion: No

**13** Floor 2 - Hall

---

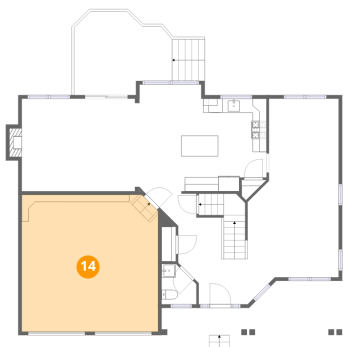


Dimensions: 6'9" x 9'7"  
Area: 65 sq. ft  
Counted as living area: Yes

Heated: Yes  
Finished: Yes  
Enclosed: Yes  
Contiguous: Yes  
Permitted: Yes  
Wet space: No  
Addition: No  
Conversion: No

**14** Floor 2 - Garage

---

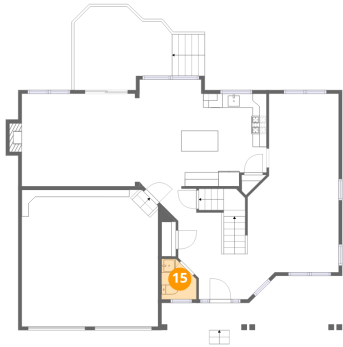


Dimensions: 19'4" x 19'4"  
Area: 374 sq. ft  
Counted as living area: No

Heated: No  
Finished: Yes  
Enclosed: Yes  
Contiguous: Yes  
Permitted: Yes  
Wet space: No  
Addition: No  
Conversion: No

3108 Tulip Tree Place, Cherry Hill, Dumfries, Prince William  
County, Virginia, United States, 22026

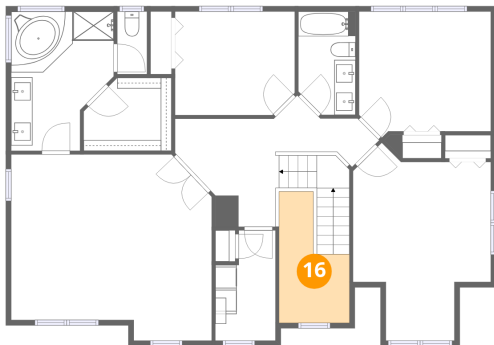
**15** Floor 2 - Bath



Dimensions: 4'11" x 5'9"  
Area: 28 sq. ft  
Counted as living area: Yes

Heated: Yes  
Finished: Yes  
Enclosed: Yes  
Contiguous: Yes  
Permitted: Yes  
Wet space: Yes  
Addition: No  
Conversion: No

**16** Floor 3 - Open To Below



Dimensions: 6'7" x 12'4"  
Area: 81 sq. ft  
Counted as living area: No

Heated: No  
Finished: No  
Enclosed: No  
Contiguous: Yes  
Permitted: No  
Wet space: No  
Addition: No  
Conversion: No

**17** Floor 3 - Bedroom 3

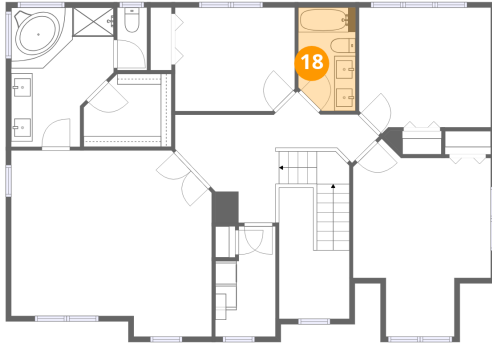


Dimensions: 12'4" x 11'9"  
Area: 145 sq. ft  
Counted as living area: Yes

Heated: Yes  
Finished: Yes  
Enclosed: Yes  
Contiguous: Yes  
Permitted: Yes  
Wet space: No  
Addition: No  
Conversion: No

3108 Tulip Tree Place, Cherry Hill, Dumfries, Prince William  
County, Virginia, United States, 22026

**18** Floor 3 - Bath



Dimensions: 5'4" x 9'8"  
Area: 52 sq. ft  
Counted as living area: Yes

Heated: Yes  
Finished: Yes  
Enclosed: Yes  
Contiguous: Yes  
Permitted: Yes  
Wet space: Yes  
Addition: No  
Conversion: No

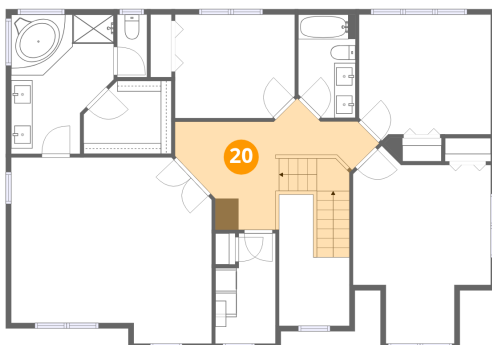
**19** Floor 3 - Bedroom 4



Dimensions: 12'11" x 17'5"  
Area: 225 sq. ft  
Counted as living area: Yes

Heated: Yes  
Finished: Yes  
Enclosed: Yes  
Contiguous: Yes  
Permitted: Yes  
Wet space: No  
Addition: No  
Conversion: No

**20** Floor 3 - Hall

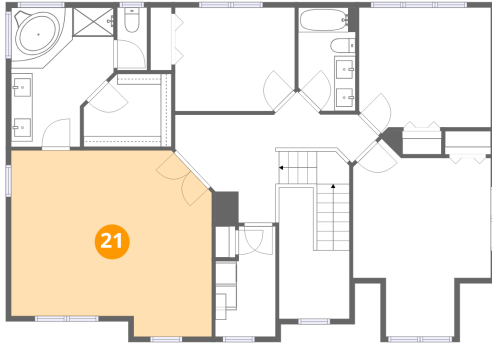


Dimensions: 19'1" x 10'1"  
Area: 193 sq. ft  
Counted as living area: Yes

Heated: Yes  
Finished: Yes  
Enclosed: Yes  
Contiguous: Yes  
Permitted: Yes  
Wet space: No  
Addition: No  
Conversion: No

3108 Tulip Tree Place, Cherry Hill, Dumfries, Prince William  
County, Virginia, United States, 22026

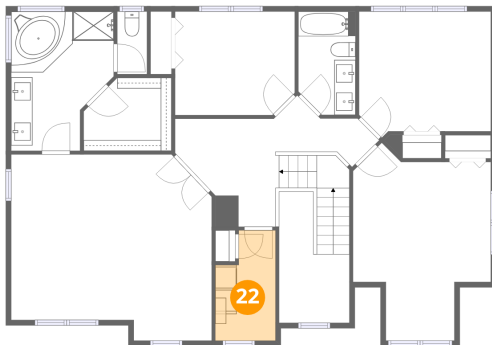
### 21 Floor 3 - Primary Bedroom



Dimensions: 18'10" x 17'5"  
Area: 328 sq. ft  
Counted as living area: Yes

Heated: Yes  
Finished: Yes  
Enclosed: Yes  
Contiguous: Yes  
Permitted: Yes  
Wet space: No  
Addition: No  
Conversion: No

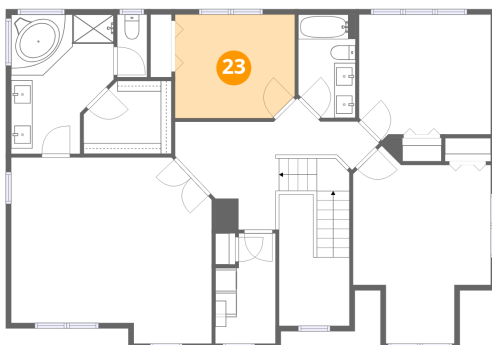
### 22 Floor 3 - Laundry



Dimensions: 5'8" x 10'4"  
Area: 58 sq. ft  
Counted as living area: Yes

Heated: Yes  
Finished: Yes  
Enclosed: Yes  
Contiguous: Yes  
Permitted: Yes  
Wet space: No  
Addition: No  
Conversion: No

### 23 Floor 3 - Bedroom 2

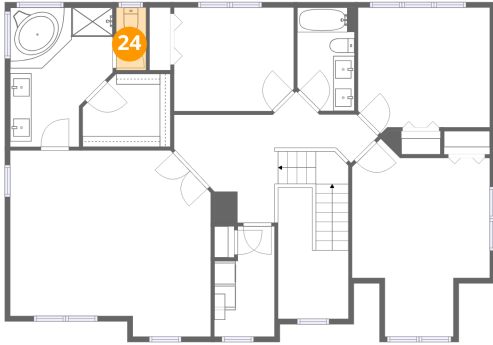


Dimensions: 11'3" x 9'8"  
Area: 109 sq. ft  
Counted as living area: Yes

Heated: Yes  
Finished: Yes  
Enclosed: Yes  
Contiguous: Yes  
Permitted: Yes  
Wet space: No  
Addition: No  
Conversion: No

3108 Tulip Tree Place, Cherry Hill, Dumfries, Prince William  
County, Virginia, United States, 22026

**24** Floor 3 - Bath



Dimensions: 2'9" x 5'10"  
Area: 16 sq. ft  
Counted as living area: Yes

Heated: Yes  
Finished: Yes  
Enclosed: Yes  
Contiguous: Yes  
Permitted: Yes  
Wet space: Yes  
Addition: No  
Conversion: No

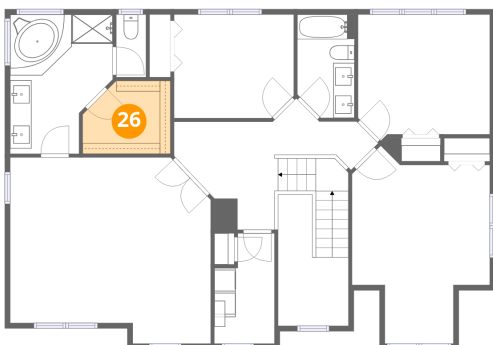
**25** Floor 3 - Primary Bath



Dimensions: 9'7" x 13'0"  
Area: 125 sq. ft  
Counted as living area: Yes

Heated: Yes  
Finished: Yes  
Enclosed: Yes  
Contiguous: Yes  
Permitted: Yes  
Wet space: Yes  
Addition: No  
Conversion: No

**26** Floor 3 - W.I.C.



Dimensions: 8'3" x 6'10"  
Area: 56 sq. ft  
Counted as living area: Yes

Heated: Yes  
Finished: Yes  
Enclosed: Yes  
Contiguous: Yes  
Permitted: Yes  
Wet space: No  
Addition: No  
Conversion: No