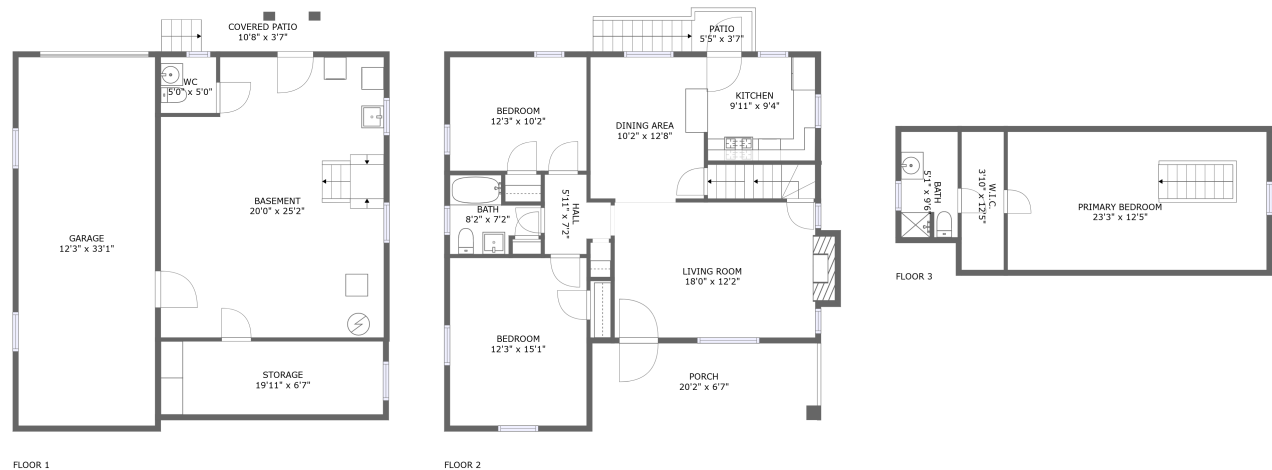


Home report

1244 Ridge Road, Harmony Township, Ambridge, Beaver  
County, Pennsylvania, United States, 15003



Total Area: 1180 sq. ft

Floor 1: 29 sq. ft, Floor 2: 926 sq. ft, Floor 3: 225 sq. ft

Excluded: Garage 406 sq. ft, Storage 138 sq. ft, Basement 475 sq. ft, Outdoor Patio Covered 44 sq. ft, Outdoor Porch 132 sq. ft, Outdoor Patio 44 sq. ft, Fireplace 12 sq. ft, Low Ceiling 166 sq. ft, Walls: 190 sq. ft

Property summary

3 Floors

3 Bedrooms

2 Bathrooms

Home report

**1244 Ridge Road, Harmony Township, Ambridge, Beaver  
County, Pennsylvania, United States, 15003**



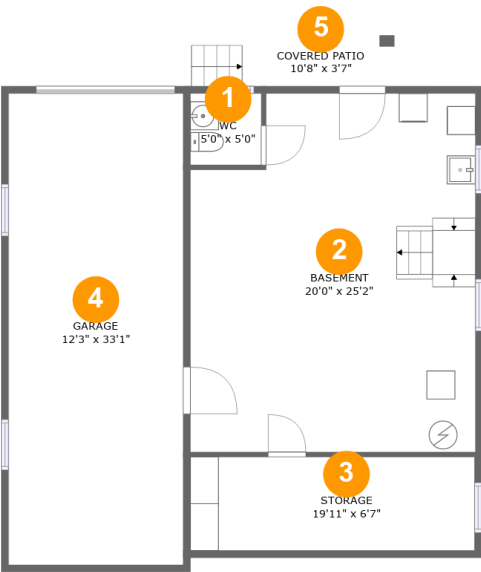
**1**  
Half baths



**1**  
Garages

Home report

1244 Ridge Road, Harmony Township, Ambridge, Beaver County, Pennsylvania, United States, 15003



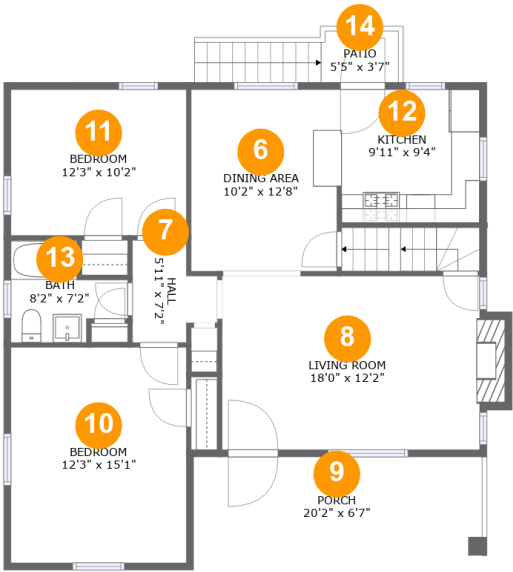
Room dimensions

Floor 1 Total:29sqft   Excluded: 1063sqft

#		Max Dimensions	sqft	Included
1	WC	5'0" x 5'0"	25 sq. ft	Yes
2	Basement	20'0" x 25'2"	475 sq. ft	No
3	Storage	19'11" x 6'7"	131 sq. ft	No
4	Garage	12'3" x 33'1"	406 sq. ft	No
5	Covered Patio	10'8" x 3'7"	44 sq. ft	No

Home report

1244 Ridge Road, Harmony Township, Ambridge, Beaver  
County, Pennsylvania, United States, 15003



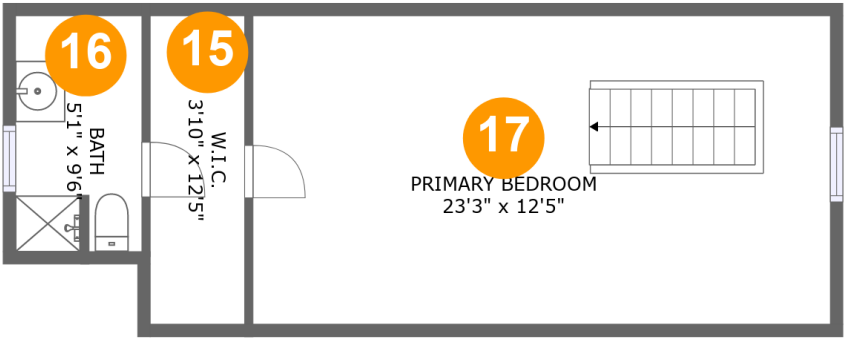
Room dimensions

Floor 2 Total:926sqft    Excluded: 188sqft

#		Max Dimensions	sqft	Included
6	Dining Area	10'2" x 12'8"	129 sq. ft	Yes
7	Hall	5'11" x 7'2"	34 sq. ft	Yes
8	Living Room	18'0" x 12'2"	229 sq. ft	Yes
9	Porch	20'2" x 6'7"	132 sq. ft	No
10	Bedroom	12'3" x 15'1"	185 sq. ft	Yes
11	Bedroom	12'3" x 10'2"	125 sq. ft	Yes
12	Kitchen	9'11" x 9'4"	92 sq. ft	Yes
13	Bath	8'2" x 7'2"	44 sq. ft	Yes
14	Patio	5'5" x 3'7"	44 sq. ft	No

Home report

1244 Ridge Road, Harmony Township, Ambridge, Beaver  
County, Pennsylvania, United States, 15003



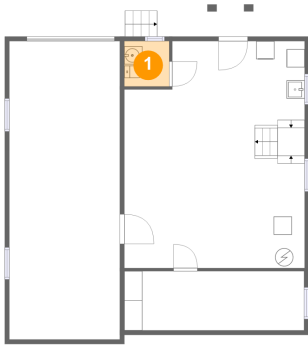
Room dimensions

Floor 3 Total:225sqft Excluded: 166sqft

#		Max Dimensions	sqft	Included
15	W.I.C.	3'10" x 12'5"	26 sq. ft	Yes
16	Bath	5'1" x 9'6"	34 sq. ft	Yes
17	Primary Bedroom	23'3" x 12'5"	159 sq. ft	Yes

1244 Ridge Road, Harmony Township, Ambridge, Beaver  
County, Pennsylvania, United States, 15003

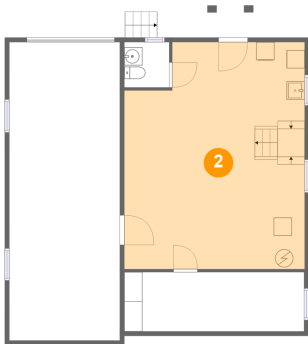
1 Floor 1 - WC



Max Dimensions: 5'0" x 5'0"  
Calculated Area: 25 sq. ft  
Included: No

Heated: Yes  
Finished: Yes  
Enclosed: Yes  
Contiguous: No  
Permitted: Yes  
Wet space: No  
Addition: No  
Conversion: No

2 Floor 1 - Basement

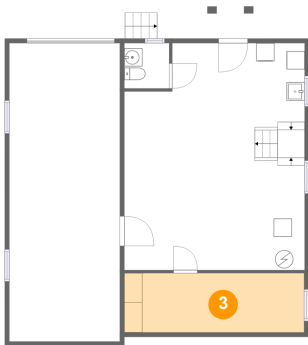


Max Dimensions: 20'0" x 25'2"  
Calculated Area: 475 sq. ft  
Included: No

Heated: Yes  
Finished: No  
Enclosed: Yes  
Contiguous: Yes  
Permitted: Yes  
Wet space: No  
Addition: No  
Conversion: No

1244 Ridge Road, Harmony Township, Ambridge, Beaver  
County, Pennsylvania, United States, 15003

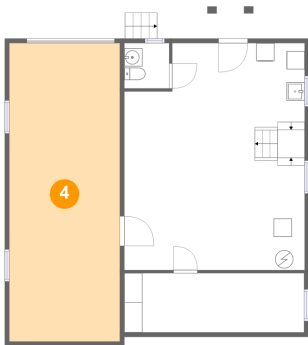
3 Floor 1 - Storage



Max Dimensions: 19'11" x 6'7"  
Calculated Area: 131 sq. ft  
Included: No

Heated: No  
Finished: No  
Enclosed: No  
Contiguous: Yes  
Permitted: Yes  
Wet space: No  
Addition: No  
Conversion: No

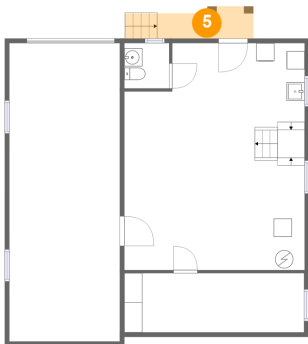
4 Floor 1 - Garage



Max Dimensions: 12'3" x 33'1"  
Calculated Area: 406 sq. ft  
Included: No

Heated: No  
Finished: No  
Enclosed: Yes  
Contiguous: Yes  
Permitted: Yes  
Wet space: No  
Addition: No  
Conversion: No

5 Floor 1 - Covered Patio

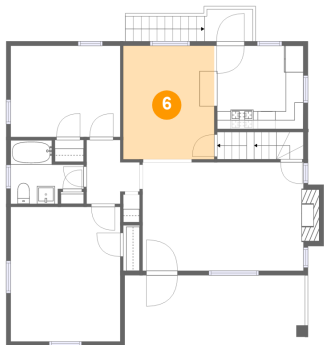


Max Dimensions: 10'8" x 3'7"  
Calculated Area: 44 sq. ft  
Included: No

Heated: No  
Finished: Yes  
Enclosed: No  
Contiguous: Yes  
Permitted: Yes  
Wet space: No  
Addition: No  
Conversion: No

1244 Ridge Road, Harmony Township, Ambridge, Beaver  
County, Pennsylvania, United States, 15003

6 Floor 2 - Dining Area



Max Dimensions: 10'2" x 12'8"  
Calculated Area: 129 sq. ft  
Included: Yes

Heated: Yes  
Finished: Yes  
Enclosed: Yes  
Contiguous: Yes  
Permitted: Yes  
Wet space: No  
Addition: No  
Conversion: No

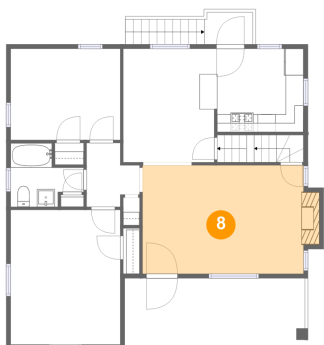
7 Floor 2 - Hall



Max Dimensions: 5'11" x 7'2"  
Calculated Area: 34 sq. ft  
Included: Yes

Heated: Yes  
Finished: Yes  
Enclosed: Yes  
Contiguous: Yes  
Permitted: Yes  
Wet space: No  
Addition: No  
Conversion: No

8 Floor 2 - Living Room



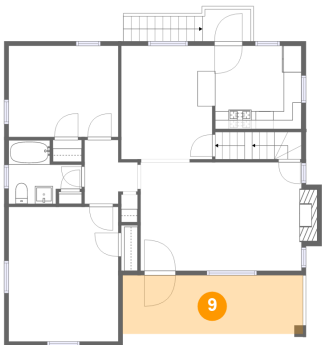
Max Dimensions: 18'0" x 12'2"  
Calculated Area: 229 sq. ft  
Included: Yes

Heated: Yes  
Finished: Yes  
Enclosed: Yes  
Contiguous: Yes  
Permitted: Yes  
Wet space: No  
Addition: No  
Conversion: No



1244 Ridge Road, Harmony Township, Ambridge, Beaver  
County, Pennsylvania, United States, 15003

9 Floor 2 - Porch



Max Dimensions: 20'2" x 6'7"  
Calculated Area: 132 sq. ft  
Included: No

Heated: No  
Finished: Yes  
Enclosed: No  
Contiguous: Yes  
Permitted: Yes  
Wet space: No  
Addition: No  
Conversion: No

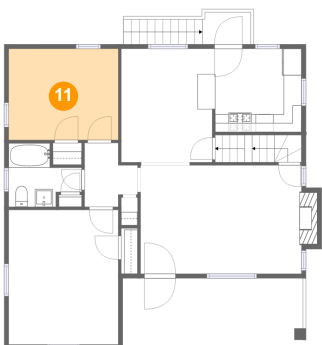
10 Floor 2 - Bedroom



Max Dimensions: 12'3" x 15'1"  
Calculated Area: 185 sq. ft  
Included: Yes

Heated: Yes  
Finished: Yes  
Enclosed: Yes  
Contiguous: Yes  
Permitted: Yes  
Wet space: No  
Addition: No  
Conversion: No

11 Floor 2 - Bedroom

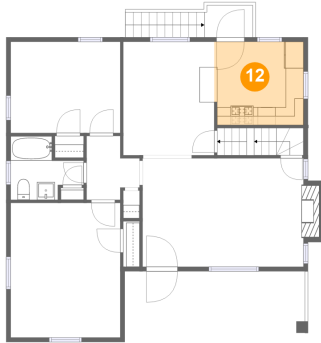


Max Dimensions: 12'3" x 10'2"  
Calculated Area: 125 sq. ft  
Included: Yes

Heated: Yes  
Finished: Yes  
Enclosed: Yes  
Contiguous: Yes  
Permitted: Yes  
Wet space: No  
Addition: No  
Conversion: No

1244 Ridge Road, Harmony Township, Ambridge, Beaver  
County, Pennsylvania, United States, 15003

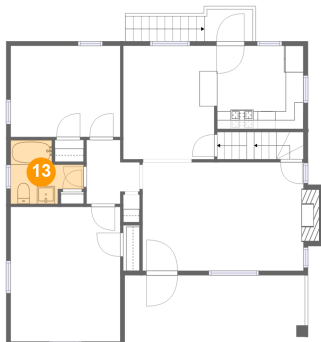
## 12 Floor 2 - Kitchen



Max Dimensions: 9'11" x 9'4"  
Calculated Area: 92 sq. ft  
Included: Yes

Heated: Yes  
Finished: Yes  
Enclosed: Yes  
Contiguous: Yes  
Permitted: Yes  
Wet space: No  
Addition: No  
Conversion: No

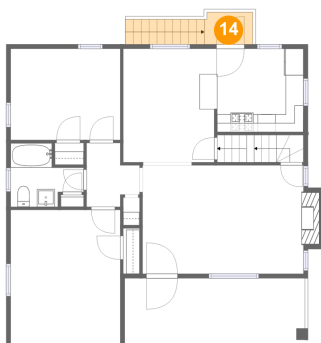
## 13 Floor 2 - Bath



Max Dimensions: 8'2" x 7'2"  
Calculated Area: 44 sq. ft  
Included: Yes

Heated: Yes  
Finished: Yes  
Enclosed: Yes  
Contiguous: Yes  
Permitted: Yes  
Wet space: Yes  
Addition: No  
Conversion: No

## 14 Floor 2 - Patio



Max Dimensions: 5'5" x 3'7"  
Calculated Area: 44 sq. ft  
Included: No

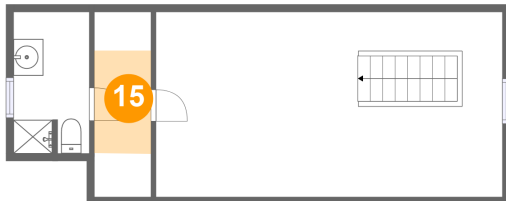
Heated: No  
Finished: Yes  
Enclosed: No  
Contiguous: Yes  
Permitted: Yes  
Wet space: No  
Addition: No  
Conversion: No

## Home report

1244 Ridge Road, Harmony Township, Ambridge, Beaver  
County, Pennsylvania, United States, 15003

### 15 Floor 3 - W.I.C.

---

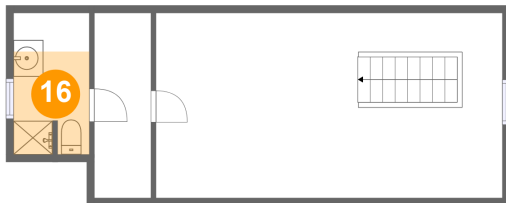


Max Dimensions: 3'10" x 12'5"  
Calculated Area: 26 sq. ft  
Included: Yes

Heated: Yes  
Finished: Yes  
Enclosed: Yes  
Contiguous: Yes  
Permitted: Yes  
Wet space: No  
Addition: No  
Conversion: No

### 16 Floor 3 - Bath

---

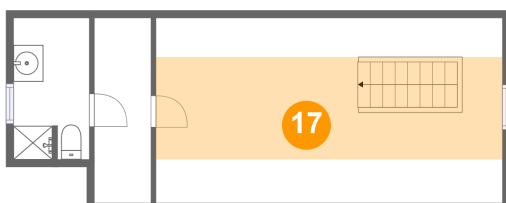


Max Dimensions: 5'1" x 9'6"  
Calculated Area: 34 sq. ft  
Included: Yes

Heated: Yes  
Finished: Yes  
Enclosed: Yes  
Contiguous: Yes  
Permitted: Yes  
Wet space: Yes  
Addition: No  
Conversion: No

### 17 Floor 3 - Primary Bedroom

---



Max Dimensions: 23'3" x 12'5"  
Calculated Area: 159 sq. ft  
Included: Yes

Heated: Yes  
Finished: Yes  
Enclosed: Yes  
Contiguous: Yes  
Permitted: Yes  
Wet space: No  
Addition: No  
Conversion: No