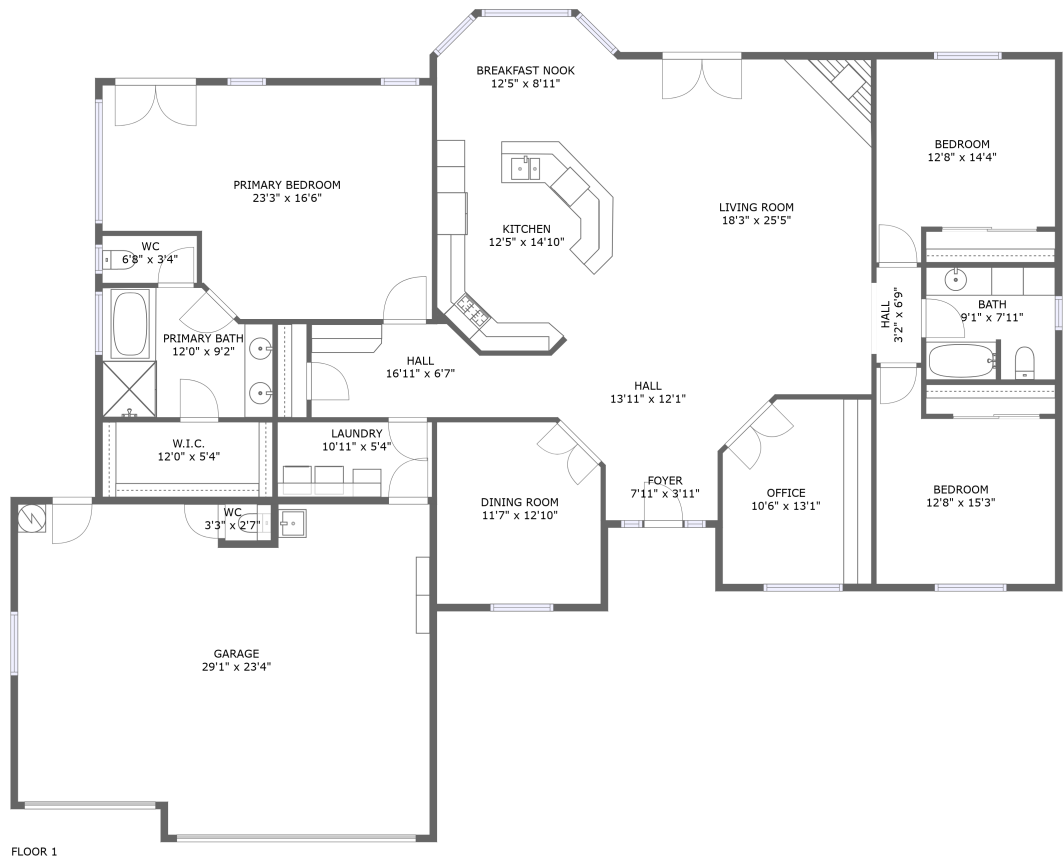


Home report

518 Grand Canyon Drive, Paso Robles, San Luis Obispo County,
California, United States, 93446




Total Area: 2322 sq. ft


Floor 1: 2322 sq. ft

Excluded: Garage 642 sq. ft, Walls: 154 sq. ft

Property summary

 1 Floors

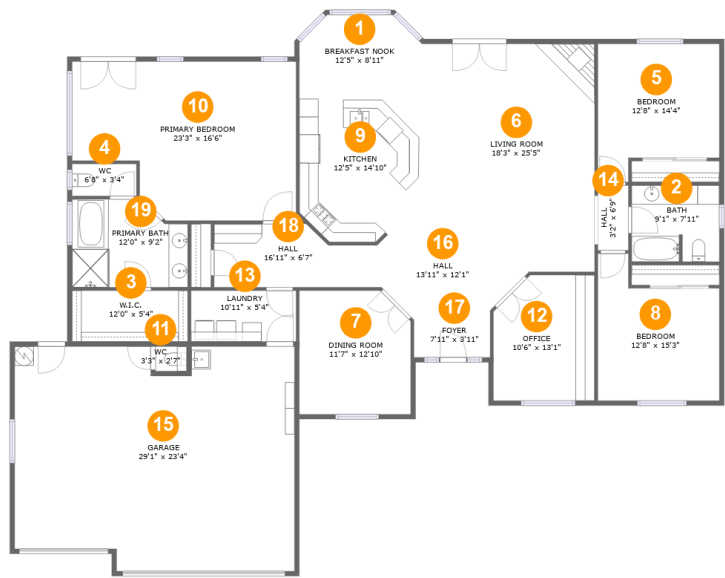
 3 Bedrooms

 2 Bathrooms

 1 Garages

Home report

518 Grand Canyon Drive, Paso Robles, San Luis Obispo County,
California, United States, 93446



Room dimensions

Floor 1

Total:2322sqft

Excluded: 642sqft

#		Max Dimensions	sqft	Included
1	Breakfast Nook	12'5" x 8'11"	101 sq. ft	Yes
2	Bath	9'1" x 7'11"	71 sq. ft	Yes
3	W.I.C.	12'0" x 5'4"	64 sq. ft	Yes
4	WC	6'8" x 3'4"	22 sq. ft	Yes
5	Bedroom	12'8" x 14'4"	158 sq. ft	Yes
6	Living Room	18'3" x 25'5"	408 sq. ft	Yes
7	Dining Room	11'7" x 12'10"	144 sq. ft	Yes
8	Bedroom	12'8" x 15'3"	159 sq. ft	Yes
9	Kitchen	12'5" x 14'10"	171 sq. ft	Yes
10	Primary Bedroom	23'3" x 16'6"	338 sq. ft	Yes
11	WC	3'3" x 2'7"	8 sq. ft	Yes

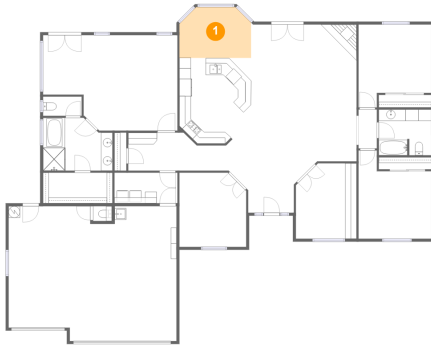
Home report

**518 Grand Canyon Drive, Paso Robles, San Luis Obispo County,
California, United States, 93446**

#		Max Dimensions	sqft	Included
12	Office	10'6" x 13'1"	130 sq. ft	Yes
13	Laundry	10'11" x 5'4"	58 sq. ft	Yes
14	Hall	3'2" x 6'9"	21 sq. ft	Yes
15	Garage	29'1" x 23'4"	642 sq. ft	No
16	Hall	13'11" x 12'1"	105 sq. ft	Yes
17	Foyer	7'11" x 3'11"	31 sq. ft	Yes
18	Hall	16'11" x 6'7"	98 sq. ft	Yes
19	Primary Bath	12'0" x 9'2"	101 sq. ft	Yes

518 Grand Canyon Drive, Paso Robles, San Luis Obispo County,
California, United States, 93446

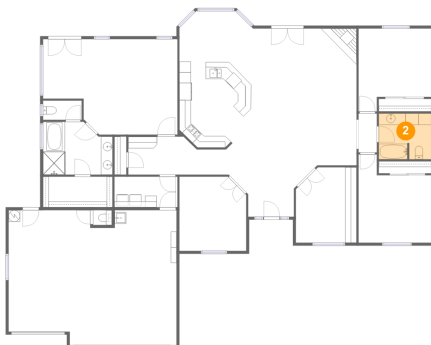
1 Floor 1 - Breakfast Nook



Max Dimensions: 12'5" x 8'11"
Calculated Area: 101 sq. ft
Included: Yes

Heated: Yes
Finished: Yes
Enclosed: Yes
Contiguous: Yes
Permitted: Yes
Wet space: No
Addition: No
Conversion: No

2 Floor 1 - Bath



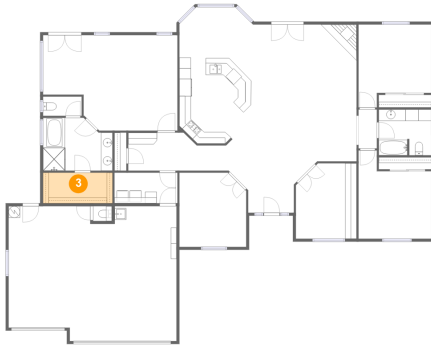
Max Dimensions: 9'1" x 7'11"
Calculated Area: 71 sq. ft
Included: Yes

Heated: Yes
Finished: Yes
Enclosed: Yes
Contiguous: Yes
Permitted: Yes
Wet space: Yes
Addition: No
Conversion: No

Home report

518 Grand Canyon Drive, Paso Robles, San Luis Obispo County,
California, United States, 93446

3 Floor 1 - W.I.C.



Max Dimensions: 12'0" x 5'4"
Calculated Area: 64 sq. ft
Included: Yes

Heated: Yes
Finished: Yes
Enclosed: Yes
Contiguous: Yes
Permitted: Yes
Wet space: No
Addition: No
Conversion: No

4 Floor 1 - WC



Max Dimensions: 6'8" x 3'4"
Calculated Area: 22 sq. ft
Included: Yes

Heated: Yes
Finished: Yes
Enclosed: Yes
Contiguous: Yes
Permitted: Yes
Wet space: Yes
Addition: No
Conversion: No

5 Floor 1 - Bedroom

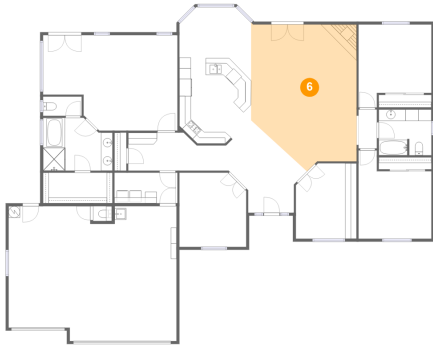


Max Dimensions: 12'8" x 14'4"
Calculated Area: 158 sq. ft
Included: Yes

Heated: Yes
Finished: Yes
Enclosed: Yes
Contiguous: Yes
Permitted: Yes
Wet space: No
Addition: No
Conversion: No

518 Grand Canyon Drive, Paso Robles, San Luis Obispo County,
California, United States, 93446

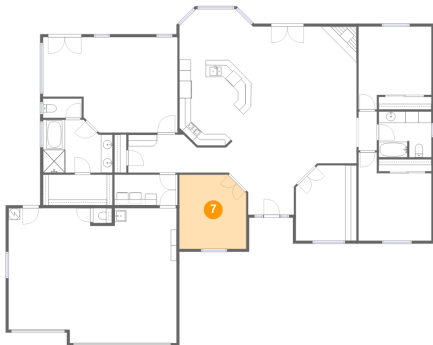
6 Floor 1 - Living Room



Max Dimensions: 18'3" x 25'5"
Calculated Area: 408 sq. ft
Included: Yes

Heated: Yes
Finished: Yes
Enclosed: Yes
Contiguous: Yes
Permitted: Yes
Wet space: No
Addition: No
Conversion: No

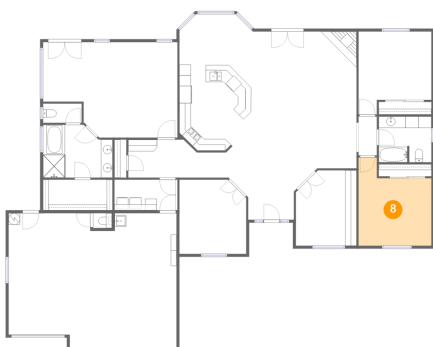
7 Floor 1 - Dining Room



Max Dimensions: 11'7" x 12'10"
Calculated Area: 144 sq. ft
Included: Yes

Heated: Yes
Finished: Yes
Enclosed: Yes
Contiguous: Yes
Permitted: Yes
Wet space: No
Addition: No
Conversion: No

8 Floor 1 - Bedroom

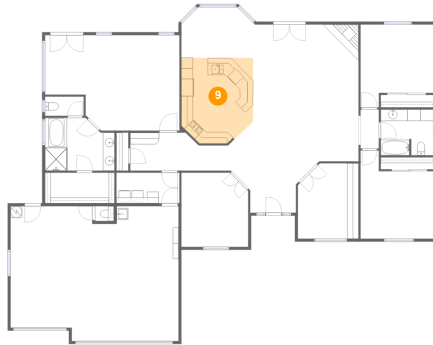


Max Dimensions: 12'8" x 15'3"
Calculated Area: 159 sq. ft
Included: Yes

Heated: Yes
Finished: Yes
Enclosed: Yes
Contiguous: Yes
Permitted: Yes
Wet space: No
Addition: No
Conversion: No

518 Grand Canyon Drive, Paso Robles, San Luis Obispo County,
California, United States, 93446

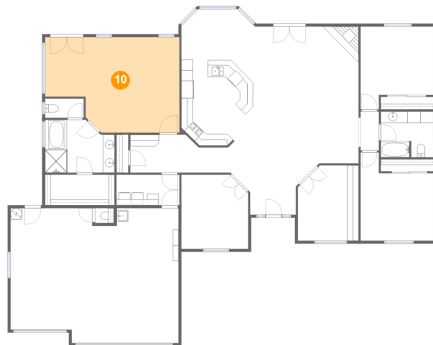
9 Floor 1 - Kitchen



Max Dimensions: 12'5" x 14'10"
Calculated Area: 171 sq. ft
Included: Yes

Heated: Yes
Finished: Yes
Enclosed: Yes
Contiguous: Yes
Permitted: Yes
Wet space: No
Addition: No
Conversion: No

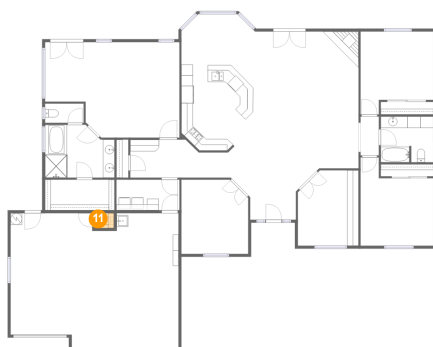
10 Floor 1 - Primary Bedroom



Max Dimensions: 23'3" x 16'6"
Calculated Area: 338 sq. ft
Included: Yes

Heated: Yes
Finished: Yes
Enclosed: Yes
Contiguous: Yes
Permitted: Yes
Wet space: No
Addition: No
Conversion: No

11 Floor 1 - WC

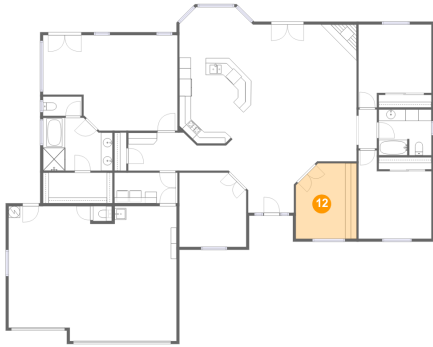


Max Dimensions: 3'3" x 2'7"
Calculated Area: 8 sq. ft
Included: Yes

Heated: Yes
Finished: Yes
Enclosed: Yes
Contiguous: Yes
Permitted: Yes
Wet space: No
Addition: No
Conversion: No

518 Grand Canyon Drive, Paso Robles, San Luis Obispo County,
California, United States, 93446

12 Floor 1 - Office



Max Dimensions: 10'6" x 13'1"
Calculated Area: 130 sq. ft
Included: Yes

Heated: Yes
Finished: Yes
Enclosed: Yes
Contiguous: Yes
Permitted: Yes
Wet space: No
Addition: No
Conversion: No

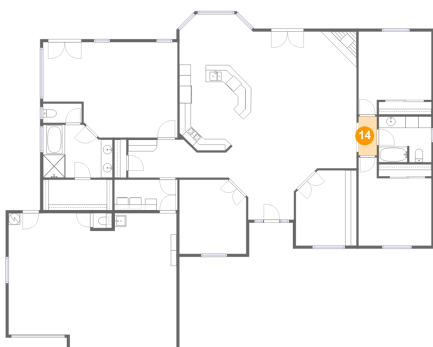
13 Floor 1 - Laundry



Max Dimensions: 10'11" x 5'4"
Calculated Area: 58 sq. ft
Included: Yes

Heated: Yes
Finished: Yes
Enclosed: Yes
Contiguous: Yes
Permitted: Yes
Wet space: No
Addition: No
Conversion: No

14 Floor 1 - Hall

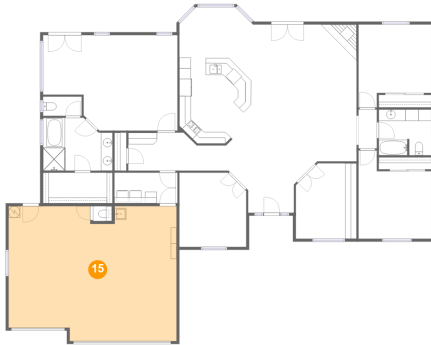


Max Dimensions: 3'2" x 6'9"
Calculated Area: 21 sq. ft
Included: Yes

Heated: Yes
Finished: Yes
Enclosed: Yes
Contiguous: Yes
Permitted: Yes
Wet space: No
Addition: No
Conversion: No

518 Grand Canyon Drive, Paso Robles, San Luis Obispo County,
California, United States, 93446

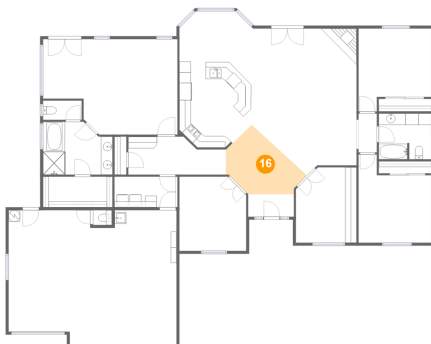
15 Floor 1 - Garage



Max Dimensions: 29'1" x 23'4"
Calculated Area: 642 sq. ft
Included: No

Heated: No
Finished: No
Enclosed: Yes
Contiguous: Yes
Permitted: Yes
Wet space: No
Addition: No
Conversion: No

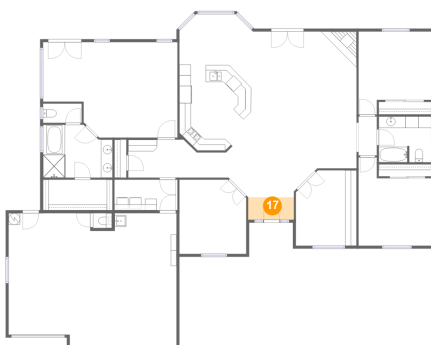
16 Floor 1 - Hall



Max Dimensions: 13'11" x 12'1"
Calculated Area: 105 sq. ft
Included: Yes

Heated: Yes
Finished: Yes
Enclosed: Yes
Contiguous: Yes
Permitted: Yes
Wet space: No
Addition: No
Conversion: No

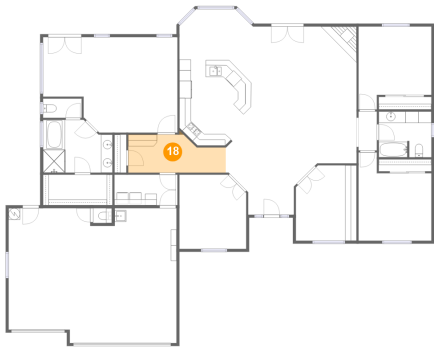
17 Floor 1 - Foyer



Max Dimensions: 7'11" x 3'11"
Calculated Area: 31 sq. ft
Included: Yes

Heated: Yes
Finished: Yes
Enclosed: Yes
Contiguous: Yes
Permitted: Yes
Wet space: No
Addition: No
Conversion: No

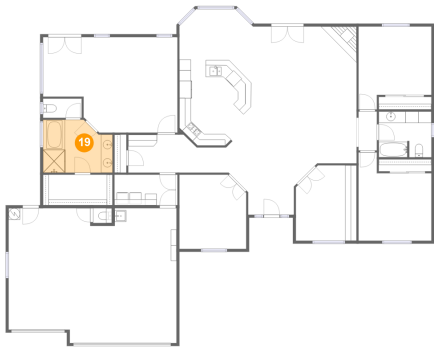
18 Floor 1 - Hall



Max Dimensions: 16'11" x 6'7"
Calculated Area: 98 sq. ft
Included: Yes

Heated: Yes
Finished: Yes
Enclosed: Yes
Contiguous: Yes
Permitted: Yes
Wet space: No
Addition: No
Conversion: No

19 Floor 1 - Primary Bath



Max Dimensions: 12'0" x 9'2"
Calculated Area: 101 sq. ft
Included: Yes

Heated: Yes
Finished: Yes
Enclosed: Yes
Contiguous: Yes
Permitted: Yes
Wet space: Yes
Addition: No
Conversion: No