



Home report


23 Woodside Drive, Londonderry, Rockingham County, New Hampshire, United States, 03053




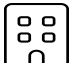
Property summary


 **1** Garages


 **3** Bedrooms

 **1** Bathrooms

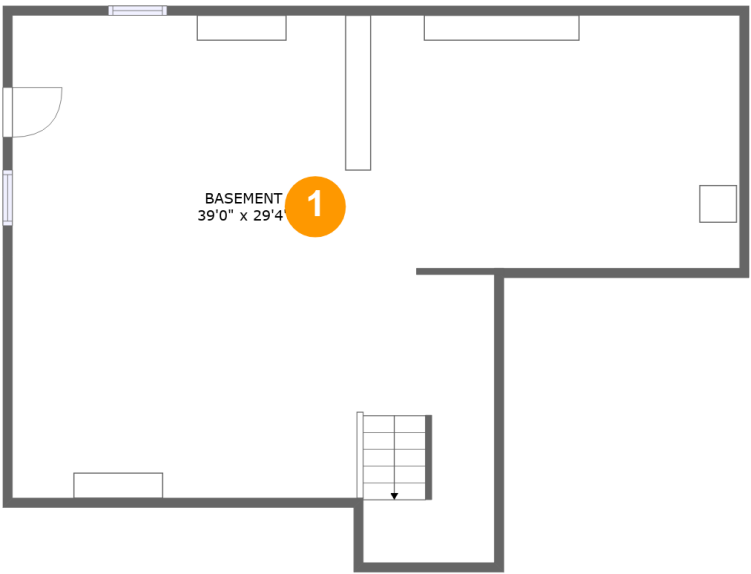
 **1** Half baths

 **3** Floors

 **1,868** Gross living area sqft

 **3,543** Total sqft

23 Woodside Drive, Londonderry, Rockingham County, New Hampshire, United States, 03053



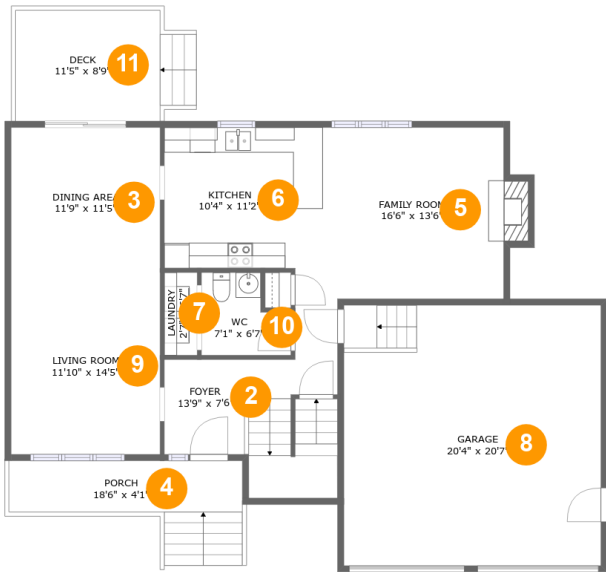
Room dimensions

Floor 1 Total sqft: 943    Living area: 0

#		Dimensions	sqft	Counted as living area
1	Basement	39'0" x 29'4"	872 sq. ft	No

Home report

23 Woodside Drive, Londonderry, Rockingham County, New Hampshire, United States, 03053

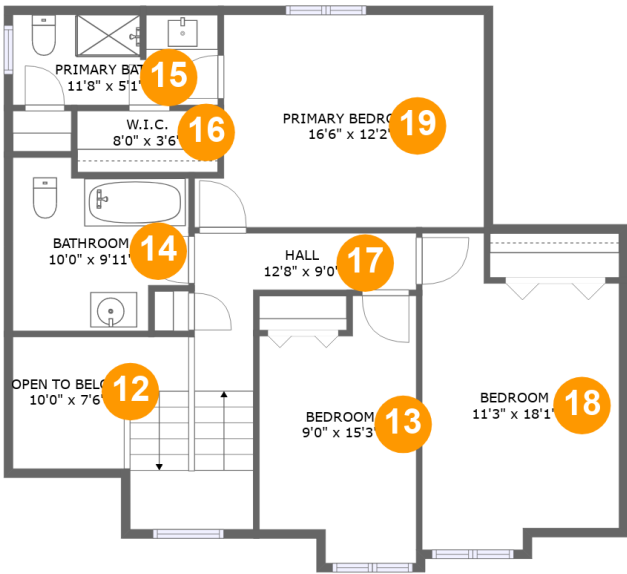


Room dimensions

Floor 2 Total sqft: 1620    Living area: 954

#		Dimensions	sqft	Counted as living area
2	Foyer	13'9" x 7'6"	141 sq. ft	Yes
3	Dining Area	11'9" x 11'5"	136 sq. ft	Yes
4	Porch	18'6" x 4'1"	101 sq. ft	No
5	Family Room	16'6" x 13'6"	234 sq. ft	Yes
6	Kitchen	10'4" x 11'2"	116 sq. ft	Yes
7	Laundry	2'7" x 6'7"	17 sq. ft	Yes
8	Garage	20'4" x 20'7"	420 sq. ft	No
9	Living Room	11'10" x 14'5"	170 sq. ft	Yes
10	WC	7'1" x 6'7"	39 sq. ft	Yes
11	Deck	11'5" x 8'9"	117 sq. ft	No

23 Woodside Drive, Londonderry, Rockingham County, New Hampshire, United States, 03053



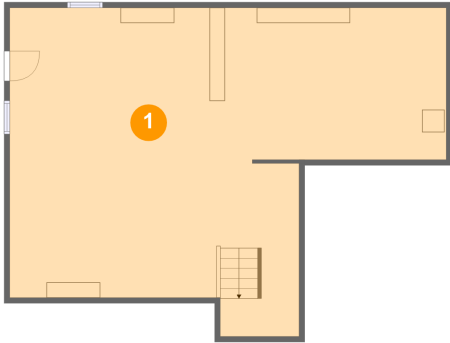
Room dimensions

Floor 3 Total sqft: 980    Living area: 914

#		Dimensions	sqft	Counted as living area
12	Open To Below	10'0" x 7'6"	59 sq. ft	No
13	Bedroom	9'0" x 15'3"	117 sq. ft	Yes
14	Bathroom	10'0" x 9'11"	85 sq. ft	Yes
15	Primary Bath	11'8" x 5'1"	59 sq. ft	Yes
16	W.I.C.	8'0" x 3'6"	28 sq. ft	Yes
17	Hall	12'8" x 9'0"	119 sq. ft	Yes
18	Bedroom	11'3" x 18'1"	174 sq. ft	Yes
19	Primary Bedroom	16'6" x 12'2"	185 sq. ft	Yes

23 Woodside Drive, Londonderry, Rockingham County, New Hampshire, United States, 03053

1 Floor 1 - Basement



Dimensions: 39'0" x 29'4"  
Area: 872 sq. ft  
Counted as living area: No

Heated: Yes  
Finished: No  
Enclosed: Yes  
Contiguous: Yes  
Permitted: Yes  
Wet space: No  
Addition: No  
Conversion: No

2 Floor 2 - Foyer



Dimensions: 13'9" x 7'6"  
Area: 141 sq. ft  
Counted as living area: Yes

Heated: Yes  
Finished: Yes  
Enclosed: Yes  
Contiguous: Yes  
Permitted: Yes  
Wet space: No  
Addition: No  
Conversion: No

23 Woodside Drive, Londonderry, Rockingham County, New Hampshire, United States, 03053

3 Floor 2 - Dining Area



Dimensions: 11'9" x 11'5"  
Area: 136 sq. ft  
Counted as living area: Yes

Heated: Yes  
Finished: Yes  
Enclosed: Yes  
Contiguous: Yes  
Permitted: Yes  
Wet space: No  
Addition: No  
Conversion: No

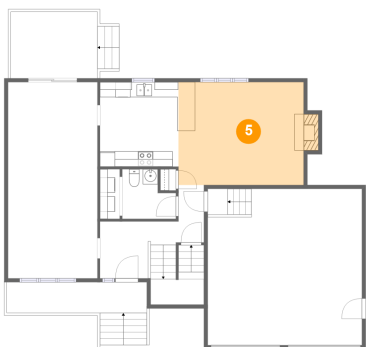
4 Floor 2 - Porch



Dimensions: 18'6" x 4'1"  
Area: 101 sq. ft  
Counted as living area: No

Heated: No  
Finished: Yes  
Enclosed: No  
Contiguous: Yes  
Permitted: Yes  
Wet space: No  
Addition: No  
Conversion: No

5 Floor 2 - Family Room

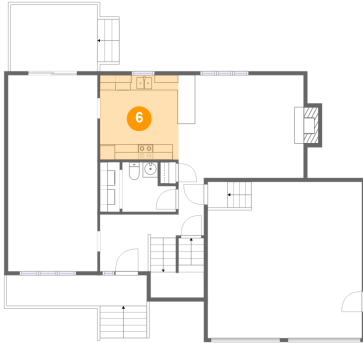


Dimensions: 16'6" x 13'6"  
Area: 234 sq. ft  
Counted as living area: Yes

Heated: Yes  
Finished: Yes  
Enclosed: Yes  
Contiguous: Yes  
Permitted: Yes  
Wet space: No  
Addition: No  
Conversion: No

23 Woodside Drive, Londonderry, Rockingham County, New Hampshire, United States, 03053

## 6 Floor 2 - Kitchen



Dimensions: 10'4" x 11'2"  
Area: 116 sq. ft  
Counted as living area: Yes

Heated: Yes  
Finished: Yes  
Enclosed: Yes  
Contiguous: Yes  
Permitted: Yes  
Wet space: No  
Addition: No  
Conversion: No

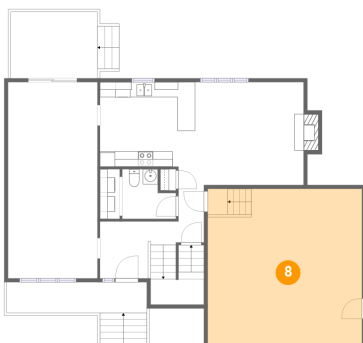
## 7 Floor 2 - Laundry



Dimensions: 2'7" x 6'7"  
Area: 17 sq. ft  
Counted as living area: Yes

Heated: Yes  
Finished: Yes  
Enclosed: Yes  
Contiguous: Yes  
Permitted: Yes  
Wet space: No  
Addition: No  
Conversion: No

## 8 Floor 2 - Garage

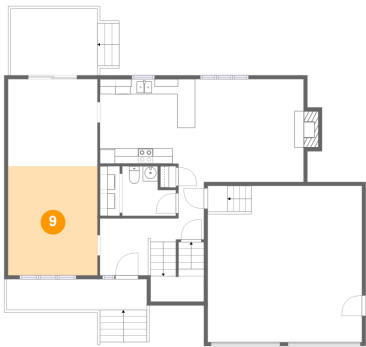


Dimensions: 20'4" x 20'7"  
Area: 420 sq. ft  
Counted as living area: No

Heated: No  
Finished: No  
Enclosed: Yes  
Contiguous: Yes  
Permitted: Yes  
Wet space: No  
Addition: No  
Conversion: No

23 Woodside Drive, Londonderry, Rockingham County, New Hampshire, United States, 03053

9 Floor 2 - Living Room



Dimensions: 11'10" x 14'5"  
Area: 170 sq. ft  
Counted as living area: Yes

Heated: Yes  
Finished: Yes  
Enclosed: Yes  
Contiguous: Yes  
Permitted: Yes  
Wet space: No  
Addition: No  
Conversion: No

10 Floor 2 - WC



Dimensions: 7'1" x 6'7"  
Area: 39 sq. ft  
Counted as living area: Yes

Heated: Yes  
Finished: Yes  
Enclosed: Yes  
Contiguous: Yes  
Permitted: Yes  
Wet space: Yes  
Addition: No  
Conversion: No

11 Floor 2 - Deck



Dimensions: 11'5" x 8'9"  
Area: 117 sq. ft  
Counted as living area: No

Heated: No  
Finished: Yes  
Enclosed: No  
Contiguous: Yes  
Permitted: Yes  
Wet space: No  
Addition: No  
Conversion: No



23 Woodside Drive, Londonderry, Rockingham County, New Hampshire, United States, 03053

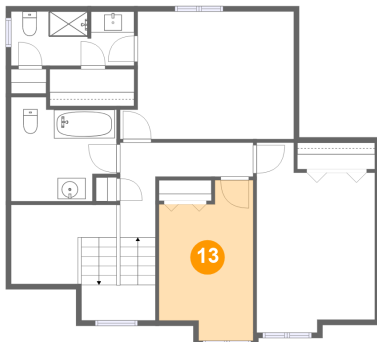
## 12 Floor 3 - Open To Below



Dimensions: 10'0" x 7'6"  
Area: 59 sq. ft  
Counted as living area: No

Heated: No  
Finished: No  
Enclosed: No  
Contiguous: Yes  
Permitted: No  
Wet space: No  
Addition: No  
Conversion: No

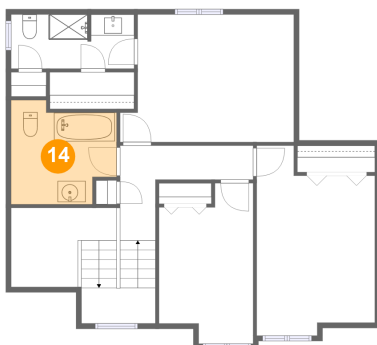
## 13 Floor 3 - Bedroom



Dimensions: 9'0" x 15'3"  
Area: 117 sq. ft  
Counted as living area: Yes

Heated: Yes  
Finished: Yes  
Enclosed: Yes  
Contiguous: Yes  
Permitted: Yes  
Wet space: No  
Addition: No  
Conversion: No

## 14 Floor 3 - Bathroom

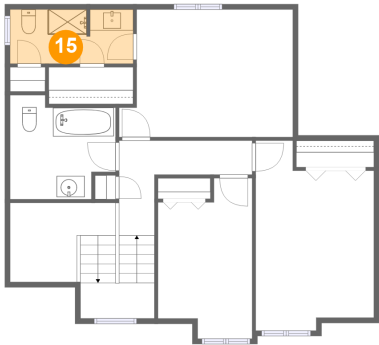


Dimensions: 10'0" x 9'11"  
Area: 85 sq. ft  
Counted as living area: Yes

Heated: Yes  
Finished: Yes  
Enclosed: Yes  
Contiguous: Yes  
Permitted: Yes  
Wet space: No  
Addition: No  
Conversion: No

23 Woodside Drive, Londonderry, Rockingham County, New Hampshire, United States, 03053

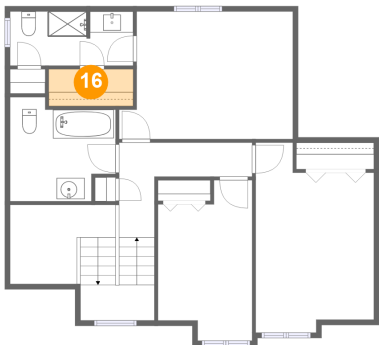
15 Floor 3 - Primary Bath



Dimensions: 11'8" x 5'1"  
Area: 59 sq. ft  
Counted as living area: Yes

Heated: Yes  
Finished: Yes  
Enclosed: Yes  
Contiguous: Yes  
Permitted: Yes  
Wet space: Yes  
Addition: No  
Conversion: No

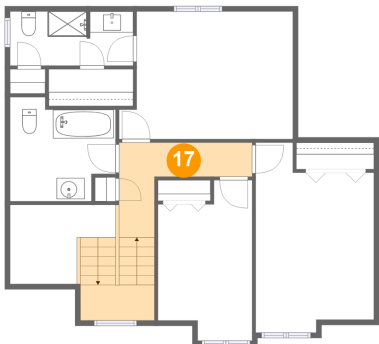
16 Floor 3 - W.I.C.



Dimensions: 8'0" x 3'6"  
Area: 28 sq. ft  
Counted as living area: Yes

Heated: Yes  
Finished: Yes  
Enclosed: Yes  
Contiguous: Yes  
Permitted: Yes  
Wet space: No  
Addition: No  
Conversion: No

17 Floor 3 - Hall



Dimensions: 12'8" x 9'0"  
Area: 119 sq. ft  
Counted as living area: Yes

Heated: Yes  
Finished: Yes  
Enclosed: Yes  
Contiguous: Yes  
Permitted: Yes  
Wet space: No  
Addition: No  
Conversion: No

23 Woodside Drive, Londonderry, Rockingham County, New Hampshire, United States, 03053

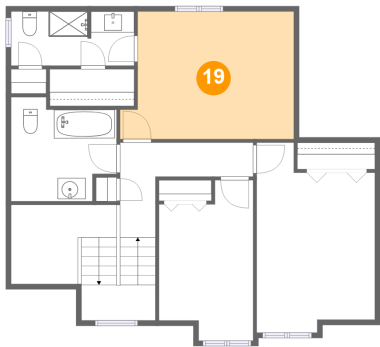
18 Floor 3 - Bedroom



Dimensions: 11'3" x 18'1"  
Area: 174 sq. ft  
Counted as living area: Yes

Heated: Yes  
Finished: Yes  
Enclosed: Yes  
Contiguous: Yes  
Permitted: Yes  
Wet space: No  
Addition: No  
Conversion: No

19 Floor 3 - Primary Bedroom



Dimensions: 16'6" x 12'2"  
Area: 185 sq. ft  
Counted as living area: Yes

Heated: Yes  
Finished: Yes  
Enclosed: Yes  
Contiguous: Yes  
Permitted: Yes  
Wet space: No  
Addition: No  
Conversion: No