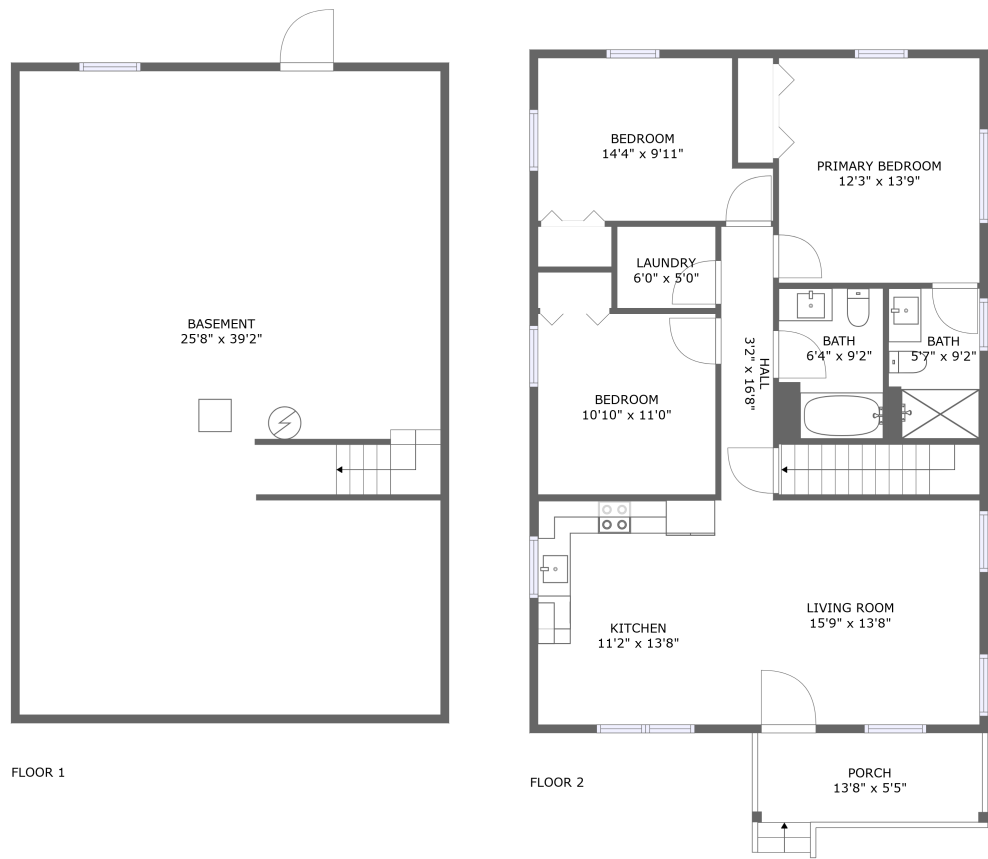


Home report

3908 Kentucky Avenue Northwest, Washington Heights,
Roanoke, Roanoke city, Virginia, United States, 24017




Total Area: 1093 sq. ft

Below Ground: 0 sq. ft, Floor 2: 1093 sq. ft

Excluded: Basement 1006 sq. ft, Porch 80 sq. ft, Walls: 134 sq. ft

Property summary

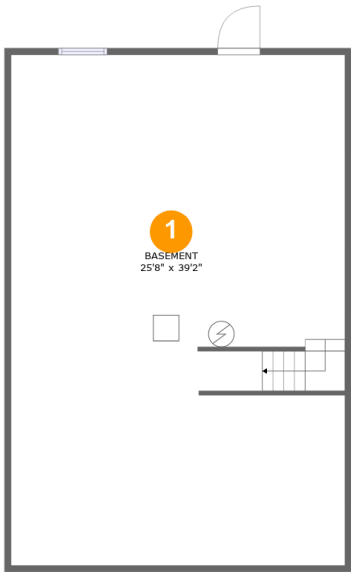
 **2** Floors

 **3** Bedrooms

 **2** Bathrooms

Home report

3908 Kentucky Avenue Northwest, Washington Heights,
Roanoke, Roanoke city, Virginia, United States, 24017



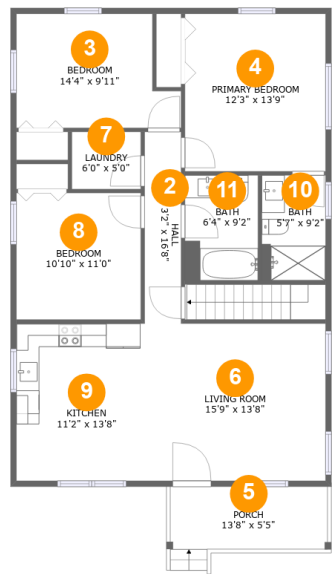
Room dimensions

Floor 1 Below ground Total:0sqft Excluded: 1006sqft

#		Max Dimensions	sqft	Included
1	Basement	25'8" x 39'2"	1002 sq. ft	No

Home report

3908 Kentucky Avenue Northwest, Washington Heights,
Roanoke, Roanoke city, Virginia, United States, 24017



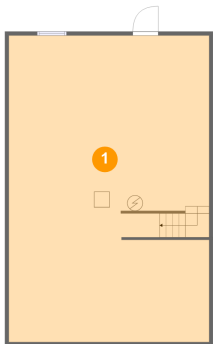
Room dimensions

Floor 2 Total:1093sqft Excluded: 80sqft

#		Max Dimensions	sqft	Included
2	Hall	3'2" x 16'8"	53 sq. ft	Yes
3	Bedroom	14'4" x 9'11"	126 sq. ft	Yes
4	Primary Bedroom	12'3" x 13'9"	168 sq. ft	Yes
5	Porch	13'8" x 5'5"	80 sq. ft	No
6	Living Room	15'9" x 13'8"	215 sq. ft	Yes
7	Laundry	6'0" x 5'0"	30 sq. ft	Yes
8	Bedroom	10'10" x 11'0"	119 sq. ft	Yes
9	Kitchen	11'2" x 13'8"	153 sq. ft	Yes
10	Bath	5'7" x 9'2"	51 sq. ft	Yes
11	Bath	6'4" x 9'2"	58 sq. ft	Yes

3908 Kentucky Avenue Northwest, Washington Heights,
Roanoke, Roanoke city, Virginia, United States, 24017

1 Floor 1 - Basement



Max Dimensions: 25'8" x 39'2"
Calculated Area: 1002 sq. ft
Included: No

Heated: Yes
Finished: No
Enclosed: Yes
Contiguous: Yes
Permitted: Yes
Wet space: No
Addition: No
Conversion: No

2 Floor 2 - Hall



Max Dimensions: 3'2" x 16'8"
Calculated Area: 53 sq. ft
Included: Yes

Heated: Yes
Finished: Yes
Enclosed: Yes
Contiguous: Yes
Permitted: Yes
Wet space: No
Addition: No
Conversion: No

3908 Kentucky Avenue Northwest, Washington Heights,
Roanoke, Roanoke city, Virginia, United States, 24017

3 Floor 2 - Bedroom



Max Dimensions: 14'4" x 9'11"
Calculated Area: 126 sq. ft
Included: Yes

Heated: Yes
Finished: Yes
Enclosed: Yes
Contiguous: Yes
Permitted: Yes
Wet space: No
Addition: No
Conversion: No

4 Floor 2 - Primary Bedroom



Max Dimensions: 12'3" x 13'9"
Calculated Area: 168 sq. ft
Included: Yes

Heated: Yes
Finished: Yes
Enclosed: Yes
Contiguous: Yes
Permitted: Yes
Wet space: No
Addition: No
Conversion: No

5 Floor 2 - Porch

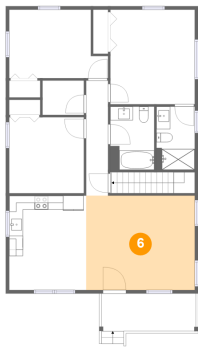


Max Dimensions: 13'8" x 5'5"
Calculated Area: 80 sq. ft
Included: No

Heated: No
Finished: Yes
Enclosed: No
Contiguous: Yes
Permitted: Yes
Wet space: No
Addition: No
Conversion: No

3908 Kentucky Avenue Northwest, Washington Heights,
Roanoke, Roanoke city, Virginia, United States, 24017

6 Floor 2 - Living Room



Max Dimensions: 15'9" x 13'8"
Calculated Area: 215 sq. ft
Included: Yes

Heated: Yes
Finished: Yes
Enclosed: Yes
Contiguous: Yes
Permitted: Yes
Wet space: No
Addition: No
Conversion: No

7 Floor 2 - Laundry



Max Dimensions: 6'0" x 5'0"
Calculated Area: 30 sq. ft
Included: Yes

Heated: Yes
Finished: Yes
Enclosed: Yes
Contiguous: Yes
Permitted: Yes
Wet space: No
Addition: No
Conversion: No

8 Floor 2 - Bedroom



Max Dimensions: 10'10" x 11'0"
Calculated Area: 119 sq. ft
Included: Yes

Heated: Yes
Finished: Yes
Enclosed: Yes
Contiguous: Yes
Permitted: Yes
Wet space: No
Addition: No
Conversion: No

3908 Kentucky Avenue Northwest, Washington Heights,
Roanoke, Roanoke city, Virginia, United States, 24017

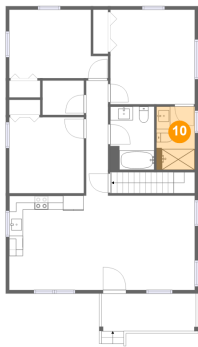
9 Floor 2 - Kitchen



Max Dimensions: 11'2" x 13'8"
Calculated Area: 153 sq. ft
Included: Yes

Heated: Yes
Finished: Yes
Enclosed: Yes
Contiguous: Yes
Permitted: Yes
Wet space: No
Addition: No
Conversion: No

10 Floor 2 - Bath



Max Dimensions: 5'7" x 9'2"
Calculated Area: 51 sq. ft
Included: Yes

Heated: Yes
Finished: Yes
Enclosed: Yes
Contiguous: Yes
Permitted: Yes
Wet space: Yes
Addition: No
Conversion: No

11 Floor 2 - Bath



Max Dimensions: 6'4" x 9'2"
Calculated Area: 58 sq. ft
Included: Yes

Heated: Yes
Finished: Yes
Enclosed: Yes
Contiguous: Yes
Permitted: Yes
Wet space: Yes
Addition: No
Conversion: No