

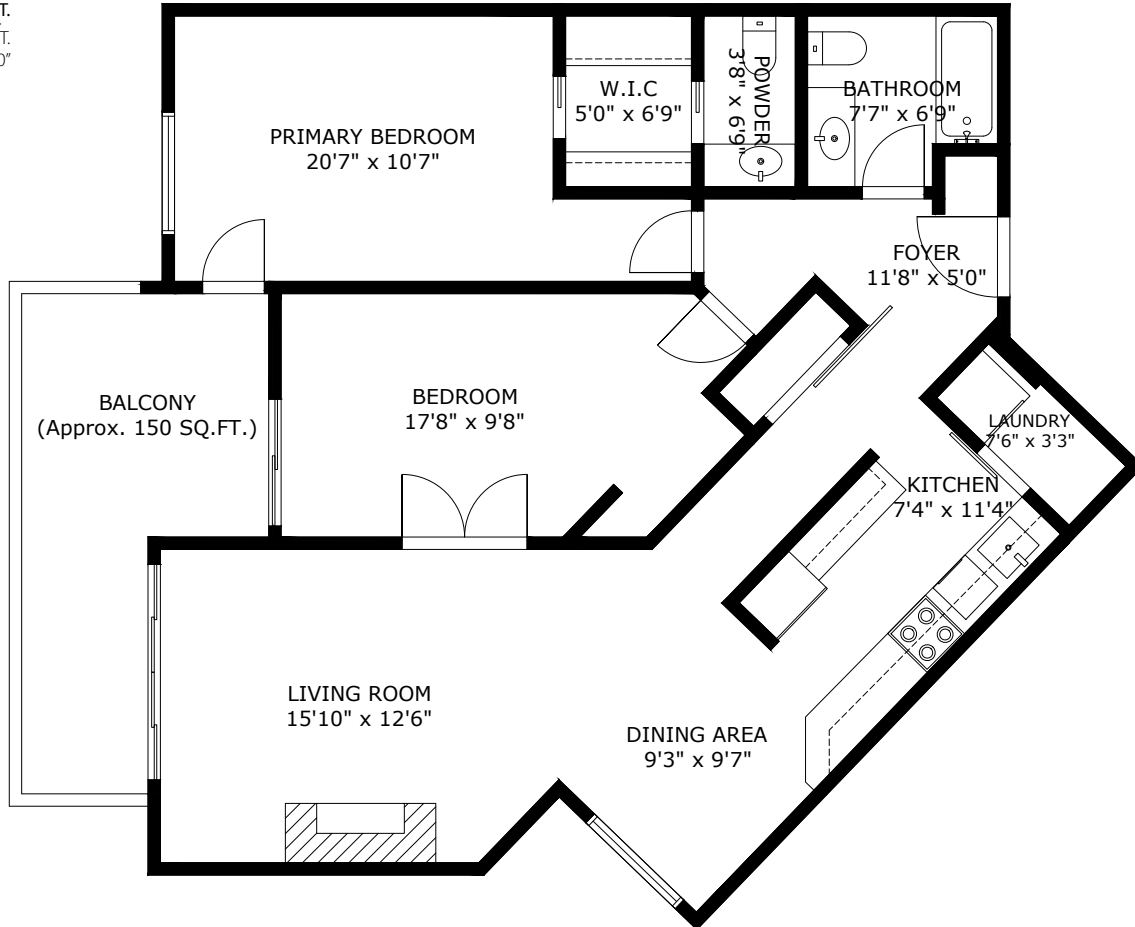
212-2620 Fromme Road

North Vancouver BC V7J 2R3

Total Area 1,095 SQ.FT.

Balcony Area: 150 SQ.FT.

Ceiling Height: 8'0"



212-2620 FROMME RD NORTH VANCOUVER BC V7J 2R3



3D IMMERSIVE
Tours Photos Floor Plans