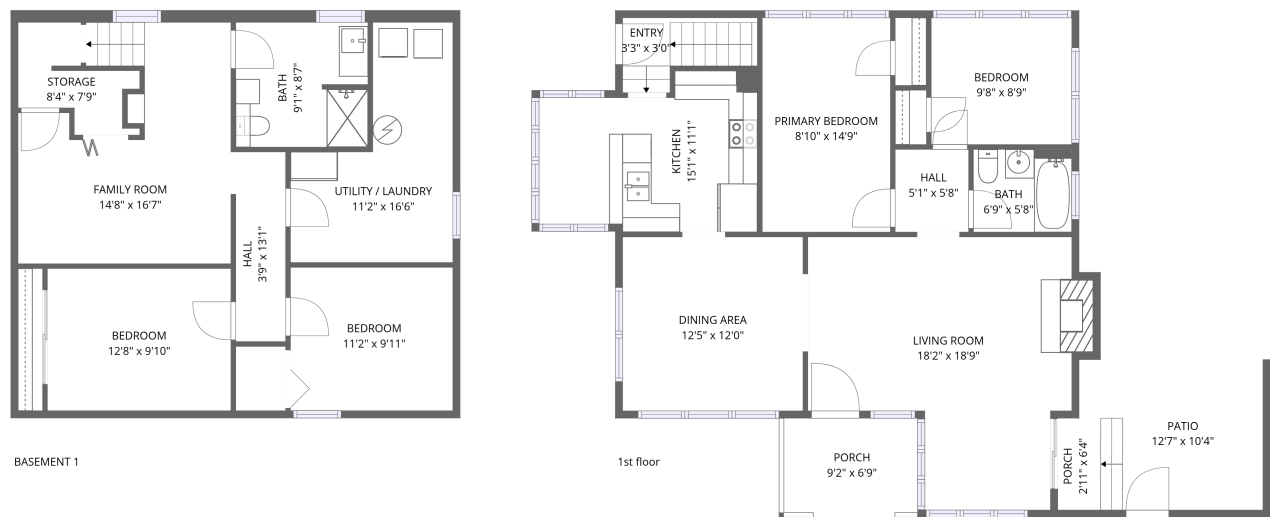


Home data report

559 South 9th Avenue, College, Pocatello, Bannock County, Idaho, United States, 83201



Total Area: 1574 sq. ft

Basement 1: 625 sq. ft, 1st Floor: 949 sq. ft

Excluded: Utility / laundry 134 sq. ft, Storage 41 sq. ft, Porch 81 sq. ft, Patio 122 sq. ft, Fireplace 9 sq. ft, Walls: 150 sq. ft

Property summary

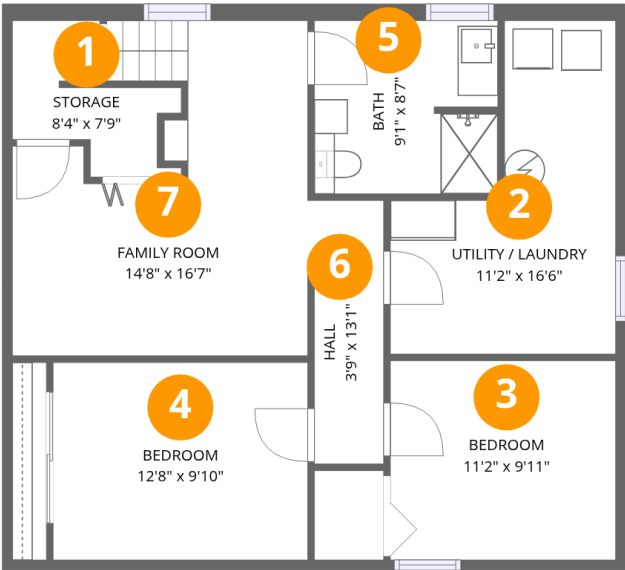
 **2** Floors

 **4** Bedrooms

 **2** Bathrooms

Home data report

559 South 9th Avenue, College, Pocatello, Bannock County,
Idaho, United States, 83201



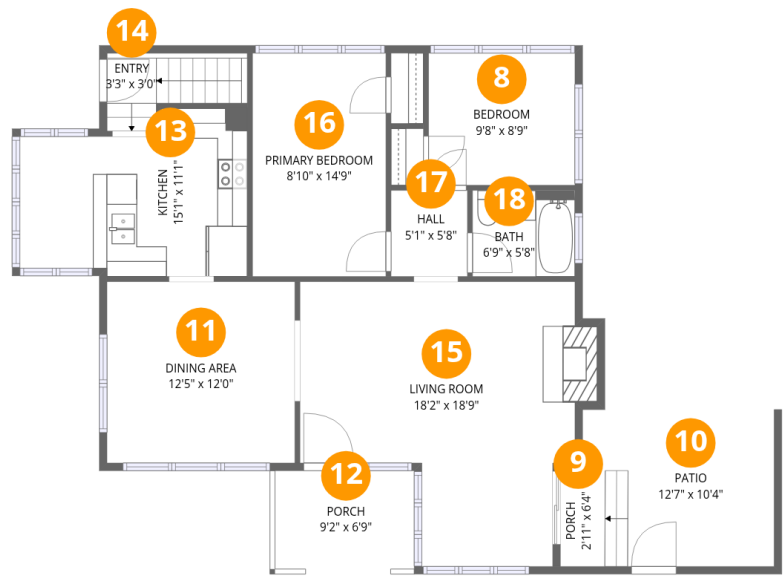
Room dimensions

Floor 1 Below grade Total:625sqft Excluded: 175sqft

#		Dimensions	sqft	Counted as living area
1	Storage	8'4" x 7'9"	65 sq. ft	No
2	Utility / Laundry	11'2" x 16'6"	185 sq. ft	No
3	Bedroom	11'2" x 9'11"	110 sq. ft	Yes
4	Bedroom	12'8" x 9'10"	124 sq. ft	Yes
5	Bath	9'1" x 8'7"	78 sq. ft	Yes
6	Hall	3'9" x 13'1"	49 sq. ft	Yes
7	Family Room	14'8" x 16'7"	244 sq. ft	Yes

Home data report

559 South 9th Avenue, College, Pocatello, Bannock County,
Idaho, United States, 83201



Room dimensions

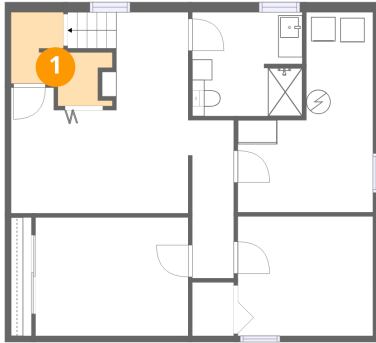
Floor 2 Total:949sqft Excluded: 212sqft

#		Dimensions	sqft	Counted as living area
8	Bedroom	9'8" x 8'9"	84 sq. ft	Yes
9	Porch	2'11" x 6'4"	19 sq. ft	No
10	Patio	12'7" x 10'4"	130 sq. ft	No
11	Dining Area	12'5" x 12'0"	149 sq. ft	Yes
12	Porch	9'2" x 6'9"	62 sq. ft	No
13	Kitchen	15'1" x 11'1"	167 sq. ft	Yes
14	Entry	3'3" x 3'0"	10 sq. ft	Yes
15	Living Room	18'2" x 18'9"	341 sq. ft	Yes
16	Primary Bedroom	8'10" x 14'9"	130 sq. ft	Yes
17	Hall	5'1" x 5'8"	29 sq. ft	Yes
18	Bath	6'9" x 5'8"	39 sq. ft	Yes

Home data report

559 South 9th Avenue, College, Pocatello, Bannock County,
Idaho, United States, 83201

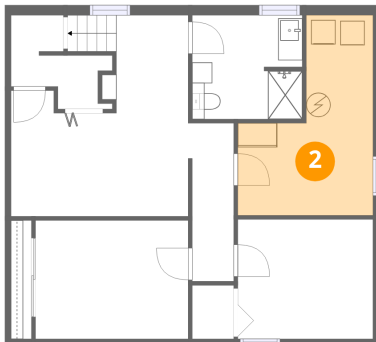
1 Floor 1 - Storage



Dimensions: 8'4" x 7'9"
Area: 65 sq. ft
Counted as living area: No

Heated: No
Finished: No
Enclosed: No
Contiguous: Yes
Permitted: Yes
Wet space: No
Addition: No
Conversion: No

2 Floor 1 - Utility / Laundry



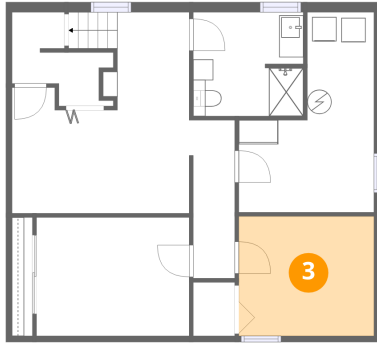
Dimensions: 11'2" x 16'6"
Area: 185 sq. ft
Counted as living area: No

Heated: Yes
Finished: No
Enclosed: Yes
Contiguous: Yes
Permitted: Yes
Wet space: No
Addition: No
Conversion: No

Home data report

559 South 9th Avenue, College, Pocatello, Bannock County,
Idaho, United States, 83201

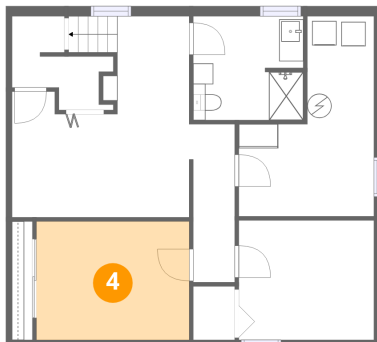
3 Floor 1 - Bedroom



Dimensions: 11'2" x 9'11"
Area: 110 sq. ft
Counted as living area: Yes

Heated: Yes
Finished: Yes
Enclosed: Yes
Contiguous: Yes
Permitted: Yes
Wet space: No
Addition: No
Conversion: No

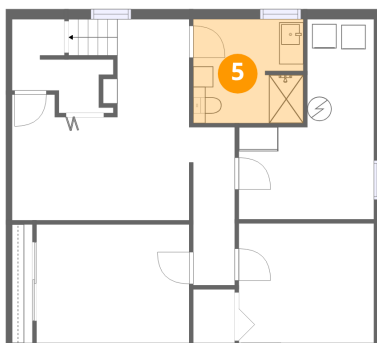
4 Floor 1 - Bedroom



Dimensions: 12'8" x 9'10"
Area: 124 sq. ft
Counted as living area: Yes

Heated: Yes
Finished: Yes
Enclosed: Yes
Contiguous: Yes
Permitted: Yes
Wet space: No
Addition: No
Conversion: No

5 Floor 1 - Bath



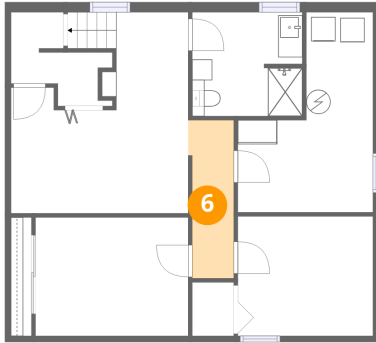
Dimensions: 9'1" x 8'7"
Area: 78 sq. ft
Counted as living area: Yes

Heated: Yes
Finished: Yes
Enclosed: Yes
Contiguous: Yes
Permitted: Yes
Wet space: Yes
Addition: No
Conversion: No

Home data report

559 South 9th Avenue, College, Pocatello, Bannock County,
Idaho, United States, 83201

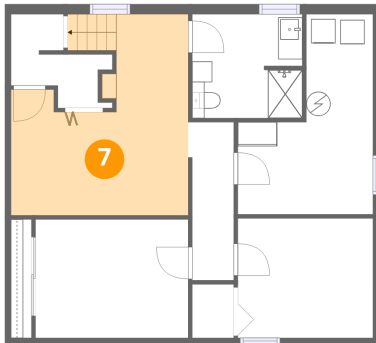
6 Floor 1 - Hall



Dimensions: 3'9" x 13'1"
Area: 49 sq. ft
Counted as living area: Yes

Heated: Yes
Finished: Yes
Enclosed: Yes
Contiguous: Yes
Permitted: Yes
Wet space: No
Addition: No
Conversion: No

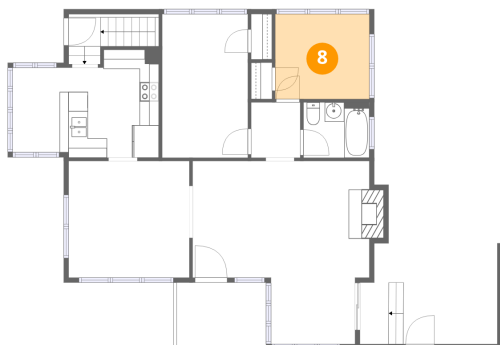
7 Floor 1 - Family Room



Dimensions: 14'8" x 16'7"
Area: 244 sq. ft
Counted as living area: Yes

Heated: Yes
Finished: Yes
Enclosed: Yes
Contiguous: Yes
Permitted: Yes
Wet space: No
Addition: No
Conversion: No

8 Floor 2 - Bedroom



Dimensions: 9'8" x 8'9"
Area: 84 sq. ft
Counted as living area: Yes

Heated: Yes
Finished: Yes
Enclosed: Yes
Contiguous: Yes
Permitted: Yes
Wet space: No
Addition: No
Conversion: No

Home data report

559 South 9th Avenue, College, Pocatello, Bannock County,
Idaho, United States, 83201

9 Floor 2 - Porch



Dimensions: 2'11" x 6'4"
Area: 19 sq. ft
Counted as living area: No

Heated: No
Finished: No
Enclosed: No
Contiguous: Yes
Permitted: Yes
Wet space: No
Addition: No
Conversion: No

10 Floor 2 - Patio



Dimensions: 12'7" x 10'4"
Area: 130 sq. ft
Counted as living area: No

Heated: No
Finished: No
Enclosed: No
Contiguous: Yes
Permitted: Yes
Wet space: No
Addition: No
Conversion: No

11 Floor 2 - Dining Area



Dimensions: 12'5" x 12'0"
Area: 149 sq. ft
Counted as living area: Yes

Heated: Yes
Finished: Yes
Enclosed: Yes
Contiguous: Yes
Permitted: Yes
Wet space: No
Addition: No
Conversion: No

Home data report

559 South 9th Avenue, College, Pocatello, Bannock County,
Idaho, United States, 83201

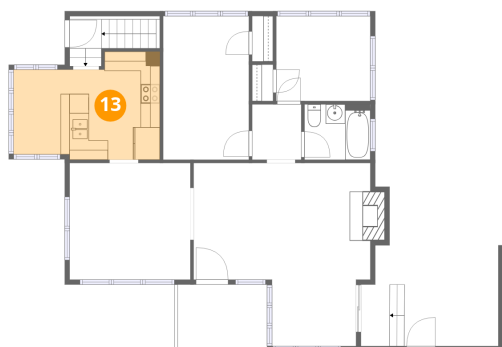
12 Floor 2 - Porch



Dimensions: 9'2" x 6'9"
Area: 62 sq. ft
Counted as living area: No

Heated: No
Finished: No
Enclosed: No
Contiguous: Yes
Permitted: Yes
Wet space: No
Addition: No
Conversion: No

13 Floor 2 - Kitchen



Dimensions: 15'1" x 11'1"
Area: 167 sq. ft
Counted as living area: Yes

Heated: Yes
Finished: Yes
Enclosed: Yes
Contiguous: Yes
Permitted: Yes
Wet space: No
Addition: No
Conversion: No

14 Floor 2 - Entry



Dimensions: 3'3" x 3'0"
Area: 10 sq. ft
Counted as living area: Yes

Heated: Yes
Finished: Yes
Enclosed: Yes
Contiguous: Yes
Permitted: Yes
Wet space: No
Addition: No
Conversion: No

Home data report

559 South 9th Avenue, College, Pocatello, Bannock County,
Idaho, United States, 83201

15 Floor 2 - Living Room



Dimensions: 18'2" x 18'9"
Area: 341 sq. ft
Counted as living area: Yes

Heated: Yes
Finished: Yes
Enclosed: Yes
Contiguous: Yes
Permitted: Yes
Wet space: No
Addition: No
Conversion: No

16 Floor 2 - Primary Bedroom



Dimensions: 8'10" x 14'9"
Area: 130 sq. ft
Counted as living area: Yes

Heated: Yes
Finished: Yes
Enclosed: Yes
Contiguous: Yes
Permitted: Yes
Wet space: No
Addition: No
Conversion: No

17 Floor 2 - Hall



Dimensions: 5'1" x 5'8"
Area: 29 sq. ft
Counted as living area: Yes

Heated: Yes
Finished: Yes
Enclosed: Yes
Contiguous: Yes
Permitted: Yes
Wet space: No
Addition: No
Conversion: No

Home data report

559 South 9th Avenue, College, Pocatello, Bannock County,
Idaho, United States, 83201

18 Floor 2 - Bath



Dimensions: 6'9" x 5'8"
Area: 39 sq. ft
Counted as living area: Yes

Heated: Yes
Finished: Yes
Enclosed: Yes
Contiguous: Yes
Permitted: Yes
Wet space: Yes
Addition: No
Conversion: No