

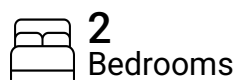


Total Area: 1121 sq. ft

1st Floor: 0 sq. ft, 2nd Floor: 1121 sq. ft

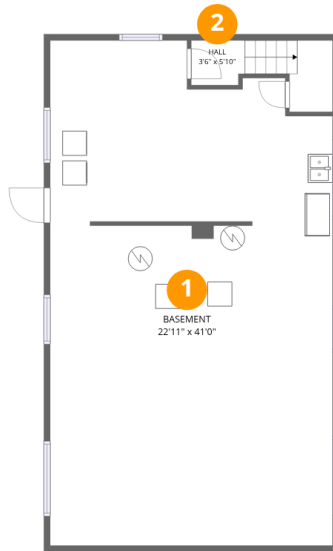
Excluded: Basement 894 sq. ft, Hall 45 sq. ft, Walls: 139 sq. ft

Property summary



Home data report

988 Genesee Park Blvd,Rochester,NY,US



Room dimensions

Floor 1

Total:0sqft

Excluded: 939sqft

#		Dimensions	sqft	Counted as living area
1	Basement	22'11" x 41'0"	887 sq. ft	No
2	Hall	3'6" x 5'10"	45 sq. ft	No



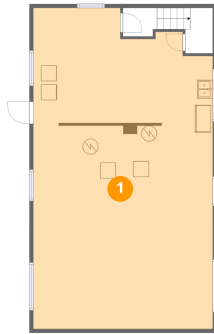
Room dimensions

Floor 2

Total:1121sqft Excluded: 0sqft

#		Dimensions	sqft	Counted as living area
3	Entry	9'7" x 5'10"	56 sq. ft	Yes
4	Hall	3'3" x 8'8"	28 sq. ft	Yes
5	Primary Bedroom	11'1" x 11'10"	120 sq. ft	Yes
6	Sun Room	15'6" x 8'4"	129 sq. ft	Yes
7	Foyer	7'1" x 10'8"	57 sq. ft	Yes
8	Living Room	19'2" x 12'6"	241 sq. ft	Yes
9	Dining Area	11'6" x 11'10"	135 sq. ft	Yes
10	Kitchen	11'6" x 10'0"	108 sq. ft	Yes
11	Bath	7'7" x 5'6"	38 sq. ft	Yes
12	Bedroom	11'1" x 10'4"	114 sq. ft	Yes

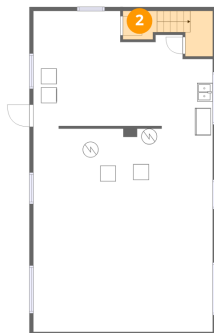
1 Floor 1 - Basement



Dimensions: 22'11" x 41'0"
Area: 887 sq. ft
Counted as living area: No

Heated: Yes
Finished: No
Enclosed: Yes
Contiguous: Yes
Permitted: Yes
Wet space: No
Addition: No
Conversion: No

2 Floor 1 - Hall



Dimensions: 3'6" x 5'10"
Area: 45 sq. ft
Counted as living area: No

Heated: Yes
Finished: No
Enclosed: Yes
Contiguous: Yes
Permitted: Yes
Wet space: No
Addition: No
Conversion: No

3 Floor 2 - Entry



Dimensions: 9'7" x 5'10"
Area: 56 sq. ft
Counted as living area: Yes

Heated: Yes
Finished: Yes
Enclosed: Yes
Contiguous: Yes
Permitted: Yes
Wet space: No
Addition: No
Conversion: No

4 Floor 2 - Hall



Dimensions: 3'3" x 8'8"
Area: 28 sq. ft
Counted as living area: Yes

Heated: Yes
Finished: Yes
Enclosed: Yes
Contiguous: Yes
Permitted: Yes
Wet space: No
Addition: No
Conversion: No

5 Floor 2 - Primary Bedroom



Dimensions: 11'1" x 11'10"
Area: 120 sq. ft
Counted as living area: Yes

Heated: Yes
Finished: Yes
Enclosed: Yes
Contiguous: Yes
Permitted: Yes
Wet space: No
Addition: No
Conversion: No

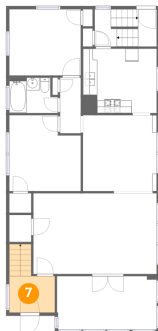
6 Floor 2 - Sun Room



Dimensions: 15'6" x 8'4"
Area: 129 sq. ft
Counted as living area: Yes

Heated: Yes
Finished: Yes
Enclosed: Yes
Contiguous: Yes
Permitted: Yes
Wet space: No
Addition: No
Conversion: No

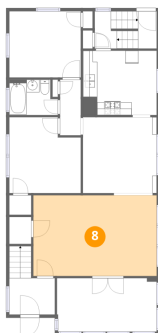
7 Floor 2 - Foyer



Dimensions: 7'1" x 10'8"
Area: 57 sq. ft
Counted as living area: Yes

Heated: Yes
Finished: Yes
Enclosed: Yes
Contiguous: Yes
Permitted: Yes
Wet space: No
Addition: No
Conversion: No

8 Floor 2 - Living Room



Dimensions: 19'2" x 12'6"
Area: 241 sq. ft
Counted as living area: Yes

Heated: Yes
Finished: Yes
Enclosed: Yes
Contiguous: Yes
Permitted: Yes
Wet space: No
Addition: No
Conversion: No

9 Floor 2 - Dining Area



Dimensions: 11'6" x 11'10"
Area: 135 sq. ft
Counted as living area: Yes

Heated: Yes
Finished: Yes
Enclosed: Yes
Contiguous: Yes
Permitted: Yes
Wet space: No
Addition: No
Conversion: No

10 Floor 2 - Kitchen



Dimensions: 11'6" x 10'0"
Area: 108 sq. ft
Counted as living area: Yes

Heated: Yes
Finished: Yes
Enclosed: Yes
Contiguous: Yes
Permitted: Yes
Wet space: No
Addition: No
Conversion: No

11 Floor 2 - Bath



Dimensions: 7'7" x 5'6"
Area: 38 sq. ft
Counted as living area: Yes

Heated: Yes
Finished: Yes
Enclosed: Yes
Contiguous: Yes
Permitted: Yes
Wet space: Yes
Addition: No
Conversion: No

12 Floor 2 - Bedroom



Dimensions: 11'1" x 10'4"
Area: 114 sq. ft
Counted as living area: Yes

Heated: Yes
Finished: Yes
Enclosed: Yes
Contiguous: Yes
Permitted: Yes
Wet space: No
Addition: No
Conversion: No