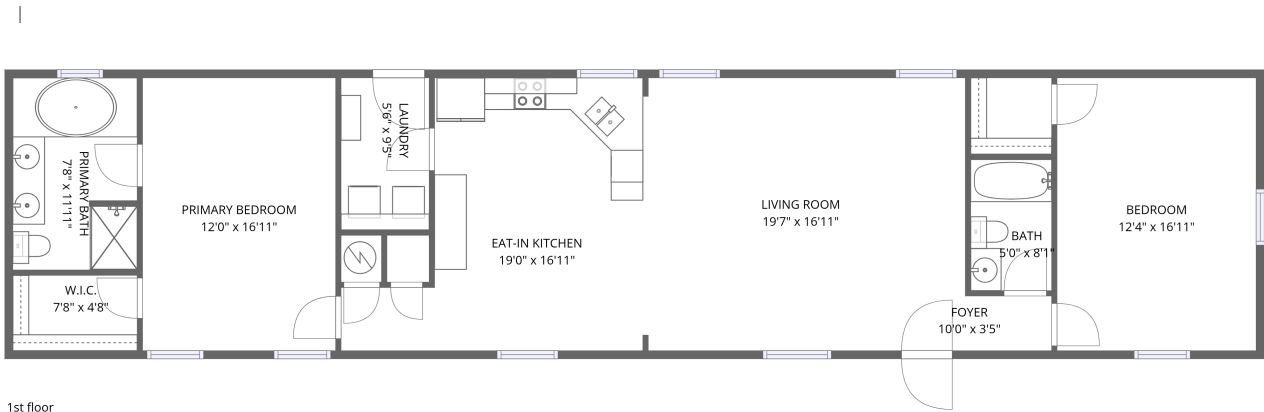


Home data report

4712 Primrose Road, Crowley, Johnson County, Texas, United States, 76036




Total Area: 1303 sq. ft

1st Floor: 1303 sq. ft

Excluded: Walls: 95 sq. ft

Property summary

 1 Floors

 2 Bedrooms

 2 Bathrooms

4712 Primrose Road, Crowley, Johnson County, Texas, United States, 76036



Room dimensions

Floor 1 Total:1303sqft   Excluded: 0sqft

#		Dimensions	sqft	Counted as living area
1	Bath	5'0" x 8'1"	41 sq. ft	Yes
2	W.I.C.	7'8" x 4'8"	36 sq. ft	Yes
3	Laundry	5'6" x 9'5"	51 sq. ft	Yes
4	Foyer	10'0" x 3'5"	34 sq. ft	Yes
5	Primary Bath	7'8" x 11'11"	91 sq. ft	Yes
6	Primary Bedroom	12'0" x 16'11"	202 sq. ft	Yes
7	Eat-in Kitchen	19'0" x 16'11"	246 sq. ft	Yes
8	Living Room	19'7" x 16'11"	316 sq. ft	Yes
9	Bedroom	12'4" x 16'11"	209 sq. ft	Yes

4712 Primrose Road, Crowley, Johnson County, Texas, United States, 76036

1 Floor 1 - Bath



Dimensions: 5'0" x 8'1"  
Area: 41 sq. ft  
Counted as living area: Yes

Heated: Yes  
Finished: Yes  
Enclosed: Yes  
Contiguous: Yes  
Permitted: Yes  
Wet space: Yes  
Addition: No  
Conversion: No

2 Floor 1 - W.I.C.



Dimensions: 7'8" x 4'8"  
Area: 36 sq. ft  
Counted as living area: Yes

Heated: Yes  
Finished: Yes  
Enclosed: Yes  
Contiguous: Yes  
Permitted: Yes  
Wet space: No  
Addition: No  
Conversion: No

4712 Primrose Road, Crowley, Johnson County, Texas, United States, 76036

3 Floor 1 - Laundry



Dimensions: 5'6" x 9'5"  
Area: 51 sq. ft  
Counted as living area: Yes

Heated: Yes  
Finished: Yes  
Enclosed: Yes  
Contiguous: Yes  
Permitted: Yes  
Wet space: No  
Addition: No  
Conversion: No

4 Floor 1 - Foyer



Dimensions: 10'0" x 3'5"  
Area: 34 sq. ft  
Counted as living area: Yes

Heated: Yes  
Finished: Yes  
Enclosed: Yes  
Contiguous: Yes  
Permitted: Yes  
Wet space: No  
Addition: No  
Conversion: No

5 Floor 1 - Primary Bath

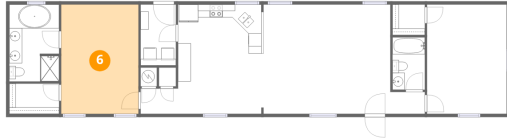


Dimensions: 7'8" x 11'11"  
Area: 91 sq. ft  
Counted as living area: Yes

Heated: Yes  
Finished: Yes  
Enclosed: Yes  
Contiguous: Yes  
Permitted: Yes  
Wet space: Yes  
Addition: No  
Conversion: No

4712 Primrose Road, Crowley, Johnson County, Texas, United States, 76036

## 6 Floor 1 - Primary Bedroom



Dimensions: 12'0" x 16'11"  
Area: 202 sq. ft  
Counted as living area: Yes

Heated: Yes  
Finished: Yes  
Enclosed: Yes  
Contiguous: Yes  
Permitted: Yes  
Wet space: No  
Addition: No  
Conversion: No

## 7 Floor 1 - Eat-in Kitchen



Dimensions: 19'0" x 16'11"  
Area: 246 sq. ft  
Counted as living area: Yes

Heated: Yes  
Finished: Yes  
Enclosed: Yes  
Contiguous: Yes  
Permitted: Yes  
Wet space: No  
Addition: No  
Conversion: No

## 8 Floor 1 - Living Room



Dimensions: 19'7" x 16'11"  
Area: 316 sq. ft  
Counted as living area: Yes

Heated: Yes  
Finished: Yes  
Enclosed: Yes  
Contiguous: Yes  
Permitted: Yes  
Wet space: No  
Addition: No  
Conversion: No

4712 Primrose Road, Crowley, Johnson County, Texas, United States, 76036

9 Floor 1 - Bedroom



Dimensions: 12'4" x 16'11"  
Area: 209 sq. ft  
Counted as living area: Yes

Heated: Yes  
Finished: Yes  
Enclosed: Yes  
Contiguous: Yes  
Permitted: Yes  
Wet space: No  
Addition: No  
Conversion: No