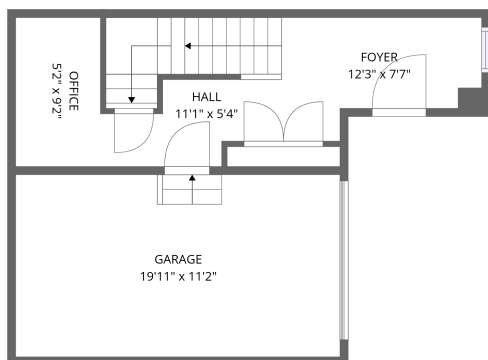
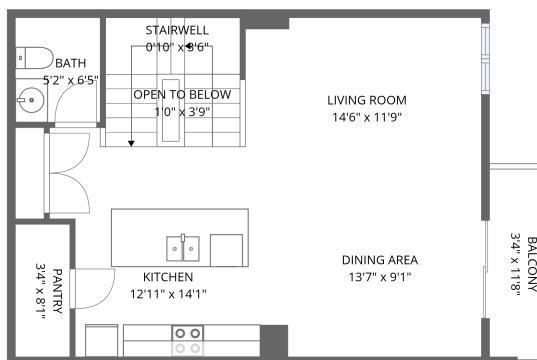


Home data report

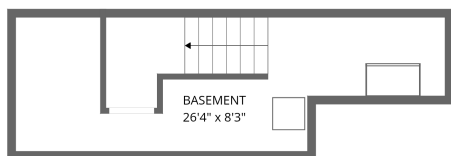
274 Pastel Way, Stonebridge, Nepean, Ontario, Canada, K2J 6C1



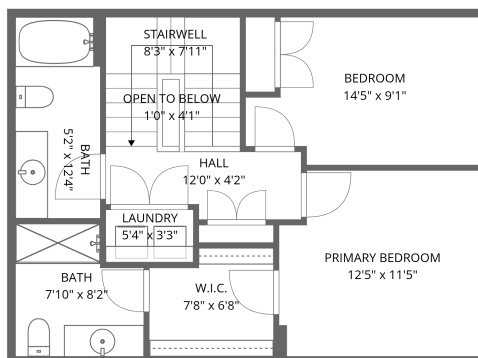
1st floor



2nd floor



Basement



3rd floor

Total Area: 1293 sq. ft

Basement: 0 sq. ft, 1st Floor: 231 sq. ft, 2nd Floor: 531 sq. ft, 3rd Floor: 531 sq. ft

Excluded: Basement 188 sq. ft, Garage 223 sq. ft, Balcony 38 sq. ft, Stairwell 130 sq. ft, Walls: 162 sq. ft

Property summary



4 Floors



2 Bedrooms



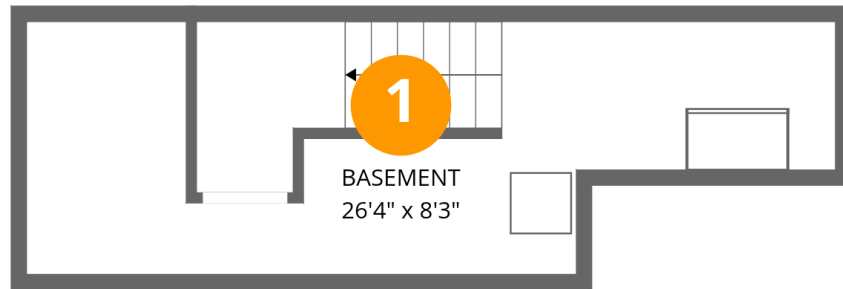
2 Bathrooms

Home data report

274 Pastel Way, Stonebridge, Nepean, Ontario, Canada, K2J 6C1

 **1**
Half baths

 **1**
Garages



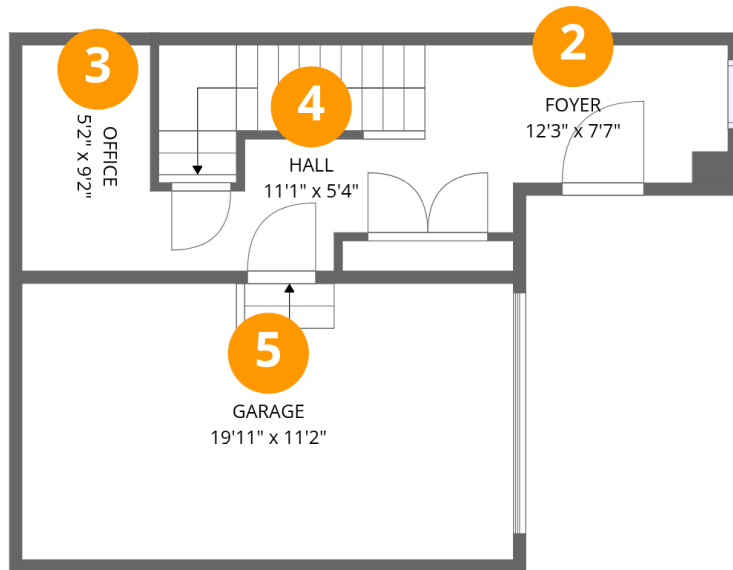
Room dimensions

Floor 1 Below grade

Total:0sqft

Excluded: 188sqft

#		Dimensions	sqft	Counted as living area
1	Basement	26'4" x 8'3"	217 sq. ft	No



Room dimensions

Floor 2

Total:231sqft

Excluded: 223sqft

#		Dimensions	sqft	Counted as living area
2	Foyer	12'3" x 7'7"	93 sq. ft	Yes
3	Office	5'2" x 9'2"	48 sq. ft	Yes
4	Hall	11'1" x 5'4"	59 sq. ft	Yes
5	Garage	19'11" x 11'2"	222 sq. ft	No

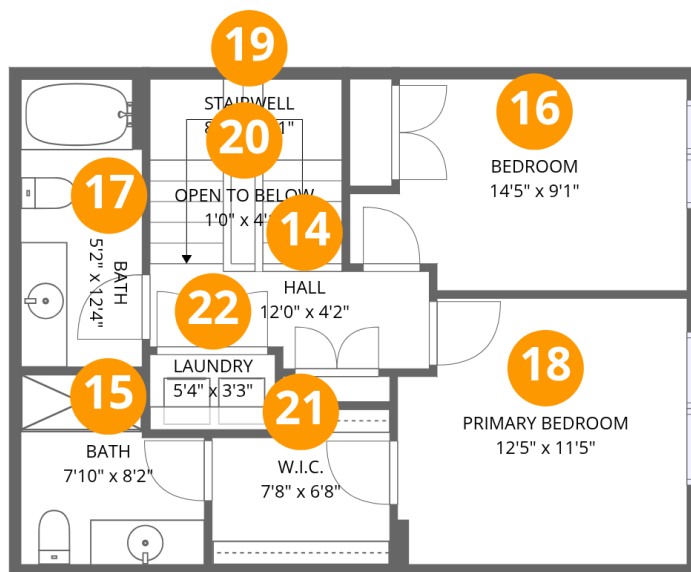


Room dimensions

Floor 3

Total:531sqft Excluded: 103sqft

#		Dimensions	sqft	Counted as living area
6	Living Room	14'6" x 11'9"	170 sq. ft	Yes
7	Balcony	3'4" x 11'8"	39 sq. ft	No
8	Open To Below	1'0" x 3'9"	4 sq. ft	Yes
9	Bath	5'2" x 6'5"	33 sq. ft	Yes
10	Kitchen	12'11" x 14'1"	182 sq. ft	Yes
11	Pantry	3'4" x 8'1"	27 sq. ft	Yes
12	Stairwell	0'10" x 3'6"	3 sq. ft	No
13	Dining Area	13'7" x 9'1"	123 sq. ft	Yes



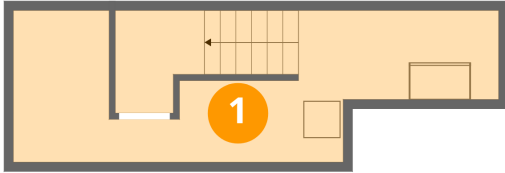
Room dimensions

Floor 4

Total:531sqft Excluded: 65sqft

#		Dimensions	sqft	Counted as living area
14	Hall	12'0" x 4'2"	50 sq. ft	Yes
15	Bath	7'10" x 8'2"	64 sq. ft	Yes
16	Bedroom	14'5" x 9'1"	131 sq. ft	Yes
17	Bath	5'2" x 12'4"	64 sq. ft	Yes
18	Primary Bedroom	12'5" x 11'5"	142 sq. ft	Yes
19	Stairwell	8'3" x 7'11"	65 sq. ft	No
20	Open To Below	1'0" x 4'1"	4 sq. ft	Yes
21	W.I.C.	7'8" x 6'8"	51 sq. ft	Yes
22	Laundry	5'4" x 3'3"	17 sq. ft	Yes

1 Floor 1 - Basement



Dimensions: 26'4" x 8'3"
Area: 217 sq. ft
Counted as living area: No

Heated: Yes
Finished: No
Enclosed: Yes
Contiguous: Yes
Permitted: Yes
Wet space: No
Addition: No
Conversion: No

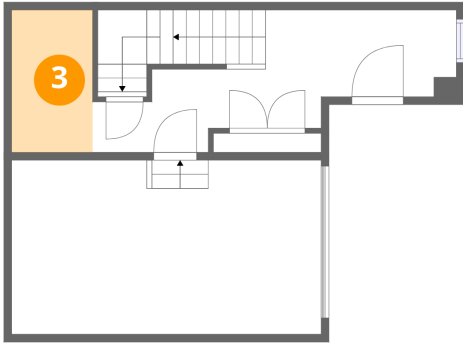
2 Floor 2 - Foyer



Dimensions: 12'3" x 7'7"
Area: 93 sq. ft
Counted as living area: Yes

Heated: Yes
Finished: Yes
Enclosed: Yes
Contiguous: Yes
Permitted: Yes
Wet space: No
Addition: No
Conversion: No

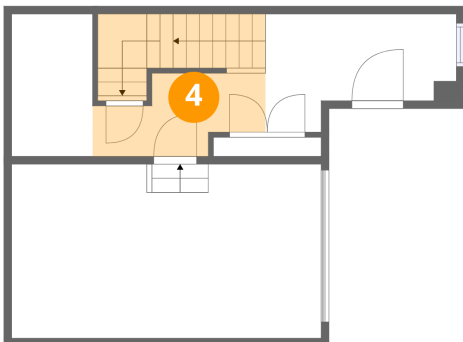
3 Floor 2 - Office



Dimensions: 5'2" x 9'2"
Area: 48 sq. ft
Counted as living area: Yes

Heated: Yes
Finished: Yes
Enclosed: Yes
Contiguous: Yes
Permitted: Yes
Wet space: No
Addition: No
Conversion: No

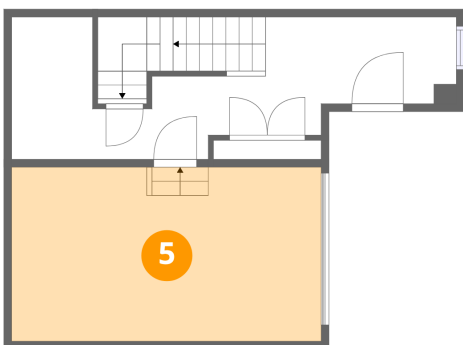
4 Floor 2 - Hall



Dimensions: 11'1" x 5'4"
Area: 59 sq. ft
Counted as living area: Yes

Heated: Yes
Finished: Yes
Enclosed: Yes
Contiguous: Yes
Permitted: Yes
Wet space: No
Addition: No
Conversion: No

5 Floor 2 - Garage



Dimensions: 19'11" x 11'2"
Area: 222 sq. ft
Counted as living area: No

Heated: No
Finished: No
Enclosed: Yes
Contiguous: Yes
Permitted: Yes
Wet space: No
Addition: No
Conversion: No

6 Floor 3 - Living Room



Dimensions: 14'6" x 11'9"
Area: 170 sq. ft
Counted as living area: Yes

Heated: Yes
Finished: Yes
Enclosed: Yes
Contiguous: Yes
Permitted: Yes
Wet space: No
Addition: No
Conversion: No

7 Floor 3 - Balcony



Dimensions: 3'4" x 11'8"
Area: 39 sq. ft
Counted as living area: No

Heated: No
Finished: No
Enclosed: No
Contiguous: Yes
Permitted: Yes
Wet space: No
Addition: No
Conversion: No

8 Floor 3 - Open To Below



Dimensions: 1'0" x 3'9"
Area: 4 sq. ft
Counted as living area: Yes

Heated: No
Finished: No
Enclosed: No
Contiguous: Yes
Permitted: No
Wet space: No
Addition: No
Conversion: No

9 Floor 3 - Bath



Dimensions: 5'2" x 6'5"
Area: 33 sq. ft
Counted as living area: Yes

Heated: Yes
Finished: Yes
Enclosed: Yes
Contiguous: Yes
Permitted: Yes
Wet space: Yes
Addition: No
Conversion: No

10 Floor 3 - Kitchen



Dimensions: 12'11" x 14'1"
Area: 182 sq. ft
Counted as living area: Yes

Heated: Yes
Finished: Yes
Enclosed: Yes
Contiguous: Yes
Permitted: Yes
Wet space: No
Addition: No
Conversion: No

11 Floor 3 - Pantry



Dimensions: 3'4" x 8'1"
Area: 27 sq. ft
Counted as living area: Yes

Heated: Yes
Finished: Yes
Enclosed: Yes
Contiguous: Yes
Permitted: Yes
Wet space: No
Addition: No
Conversion: No

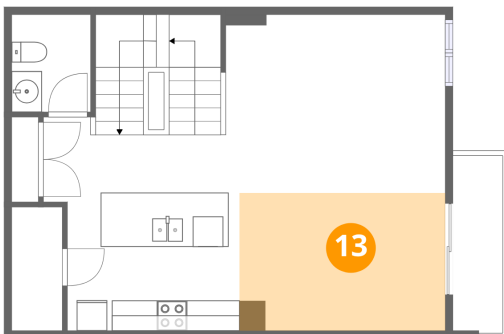
12 Floor 3 - Stairwell



Dimensions: 0'10" x 3'6"
Area: 3 sq. ft
Counted as living area: No

Heated: No
Finished: No
Enclosed: No
Contiguous: Yes
Permitted: No
Wet space: No
Addition: No
Conversion: No

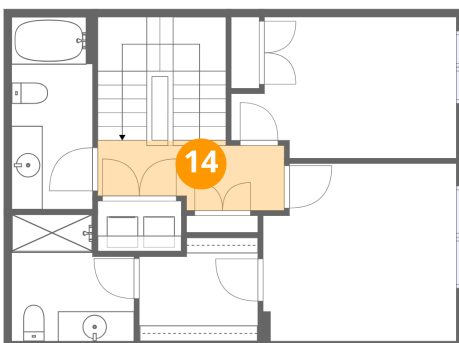
13 Floor 3 - Dining Area



Dimensions: 13'7" x 9'1"
Area: 123 sq. ft
Counted as living area: Yes

Heated: Yes
Finished: Yes
Enclosed: Yes
Contiguous: Yes
Permitted: Yes
Wet space: No
Addition: No
Conversion: No

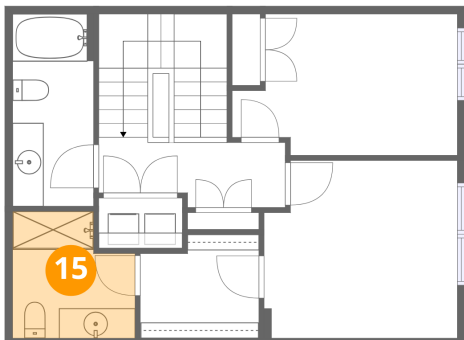
14 Floor 4 - Hall



Dimensions: 12'0" x 4'2"
Area: 50 sq. ft
Counted as living area: Yes

Heated: Yes
Finished: Yes
Enclosed: Yes
Contiguous: Yes
Permitted: Yes
Wet space: No
Addition: No
Conversion: No

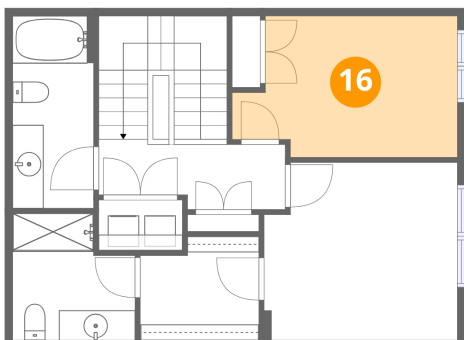
15 Floor 4 - Bath



Dimensions: 7'10" x 8'2"
Area: 64 sq. ft
Counted as living area: Yes

Heated: Yes
Finished: Yes
Enclosed: Yes
Contiguous: Yes
Permitted: Yes
Wet space: Yes
Addition: No
Conversion: No

16 Floor 4 - Bedroom



Dimensions: 14'5" x 9'1"
Area: 131 sq. ft
Counted as living area: Yes

Heated: Yes
Finished: Yes
Enclosed: Yes
Contiguous: Yes
Permitted: Yes
Wet space: No
Addition: No
Conversion: No

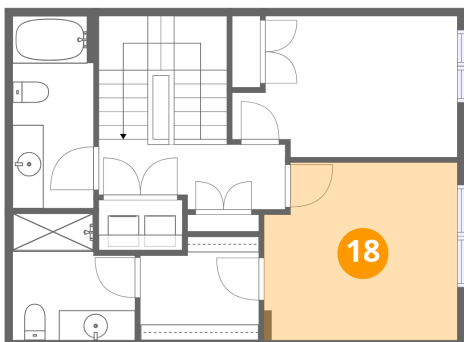
17 Floor 4 - Bath



Dimensions: 5'2" x 12'4"
Area: 64 sq. ft
Counted as living area: Yes

Heated: Yes
Finished: Yes
Enclosed: Yes
Contiguous: Yes
Permitted: Yes
Wet space: Yes
Addition: No
Conversion: No

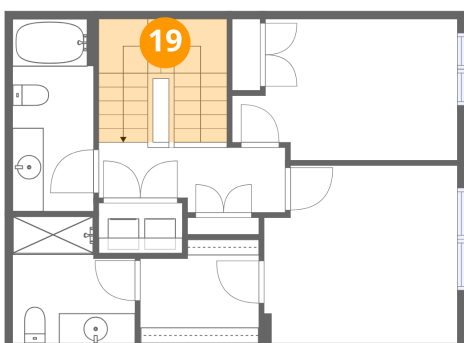
18 Floor 4 - Primary Bedroom



Dimensions: 12'5" x 11'5"
Area: 142 sq. ft
Counted as living area: Yes

Heated: Yes
Finished: Yes
Enclosed: Yes
Contiguous: Yes
Permitted: Yes
Wet space: No
Addition: No
Conversion: No

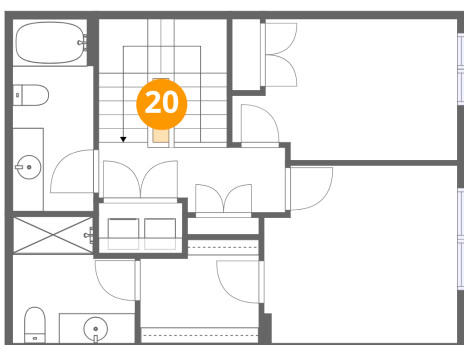
19 Floor 4 - Stairwell



Dimensions: 8'3" x 7'11"
Area: 65 sq. ft
Counted as living area: No

Heated: No
Finished: No
Enclosed: No
Contiguous: Yes
Permitted: No
Wet space: No
Addition: No
Conversion: No

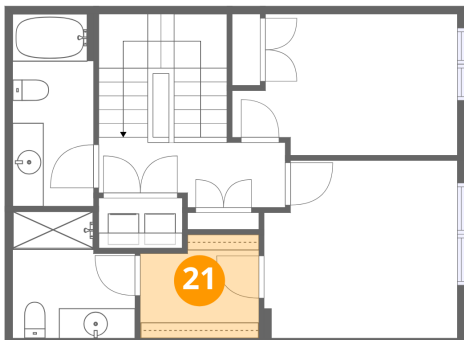
20 Floor 4 - Open To Below



Dimensions: 1'0" x 4'1"
Area: 4 sq. ft
Counted as living area: Yes

Heated: No
Finished: No
Enclosed: No
Contiguous: Yes
Permitted: No
Wet space: No
Addition: No
Conversion: No

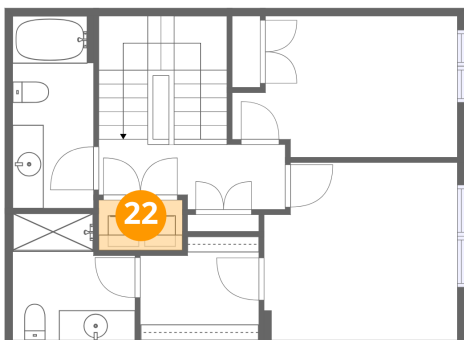
21 Floor 4 - W.I.C.



Dimensions: 7'8" x 6'8"
Area: 51 sq. ft
Counted as living area: Yes

Heated: Yes
Finished: Yes
Enclosed: Yes
Contiguous: Yes
Permitted: Yes
Wet space: No
Addition: No
Conversion: No

22 Floor 4 - Laundry



Dimensions: 5'4" x 3'3"
Area: 17 sq. ft
Counted as living area: Yes

Heated: Yes
Finished: Yes
Enclosed: Yes
Contiguous: Yes
Permitted: Yes
Wet space: No
Addition: No
Conversion: No