

Home data report

5060 Holsten Creek Cove, Bartlett, TN, US



Total Area: 2253 sq. ft

1st Floor: 1913 sq. ft, 2nd Floor: 340 sq. ft

Excluded: Low ceiling 27 sq. ft, Walls: 156 sq. ft

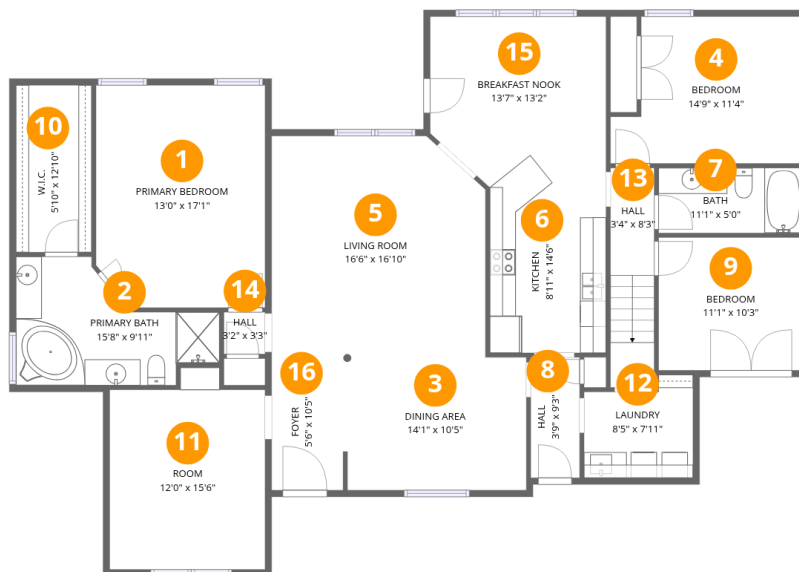
Property summary

 **2** Floors

 **3** Bedrooms

 **2** Bathrooms

5060 Holsten Creek Cove, Bartlett, TN, US



Room dimensions

Floor 1

Total: 1913 sqft Excluded: 0 sqft

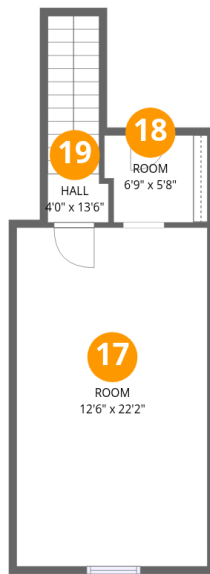
#		Dimensions	sqft	Counted as living area
1	Primary Bedroom	13'0" x 17'1"	223 sq. ft	Yes
2	Primary Bath	15'8" x 9'11"	155 sq. ft	Yes
3	Dining Area	14'1" x 10'5"	147 sq. ft	Yes
4	Bedroom	14'9" x 11'4"	167 sq. ft	Yes
5	Living Room	16'6" x 16'10"	277 sq. ft	Yes
6	Kitchen	8'11" x 14'6"	130 sq. ft	Yes
7	Bath	11'1" x 5'0"	55 sq. ft	Yes
8	Hall	3'9" x 9'3"	35 sq. ft	Yes
9	Bedroom	11'1" x 10'3"	113 sq. ft	Yes
10	W.I.C.	5'10" x 12'10"	75 sq. ft	Yes
11	Room	12'0" x 15'6"	186 sq. ft	Yes

Home data report

5060 Holsten Creek Cove, Bartlett, TN, US

#		Dimensions	sqft	Counted as living area
12	Laundry	8'5" x 7'11"	67 sq. ft	Yes
13	Hall	3'4" x 8'3"	28 sq. ft	Yes
14	Hall	3'2" x 3'3"	10 sq. ft	Yes
15	Breakfast Nook	13'7" x 13'2"	178 sq. ft	Yes
16	Foyer	5'6" x 10'5"	57 sq. ft	Yes

5060 Holsten Creek Cove, Bartlett, TN, US



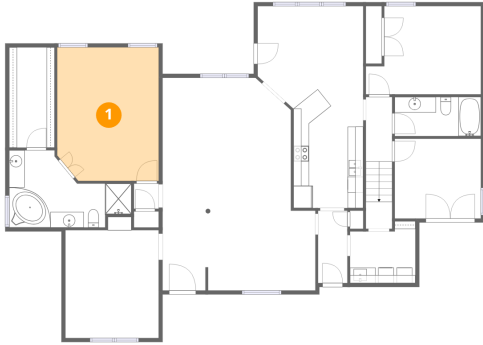
Room dimensions

Floor 2

Total:340sqft Excluded: 27sqft

#		Dimensions	sqft	Counted as living area
17	Room	12'6" x 22'2"	276 sq. ft	Yes
18	Room	6'9" x 5'8"	38 sq. ft	Yes
19	Hall	4'0" x 13'6"	54 sq. ft	Yes

1 Floor 1 - Primary Bedroom



Dimensions: 13'0" x 17'1"
Area: 223 sq. ft
Counted as living area: Yes

Heated: Yes
Finished: Yes
Enclosed: Yes
Contiguous: Yes
Permitted: Yes
Wet space: No
Addition: No
Conversion: No

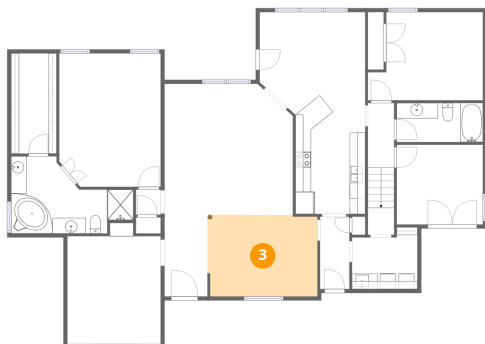
2 Floor 1 - Primary Bath



Dimensions: 15'8" x 9'11"
Area: 155 sq. ft
Counted as living area: Yes

Heated: Yes
Finished: Yes
Enclosed: Yes
Contiguous: Yes
Permitted: Yes
Wet space: Yes
Addition: No
Conversion: No

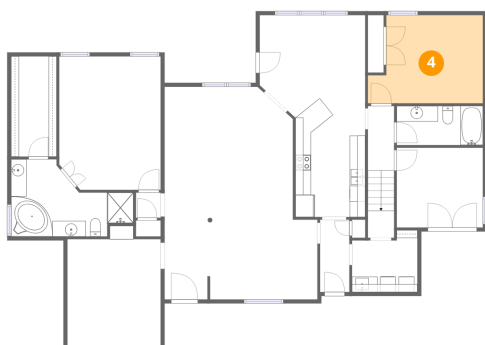
3 Floor 1 - Dining Area



Dimensions: 14'1" x 10'5"
Area: 147 sq. ft
Counted as living area: Yes

Heated: Yes
Finished: Yes
Enclosed: Yes
Contiguous: Yes
Permitted: Yes
Wet space: No
Addition: No
Conversion: No

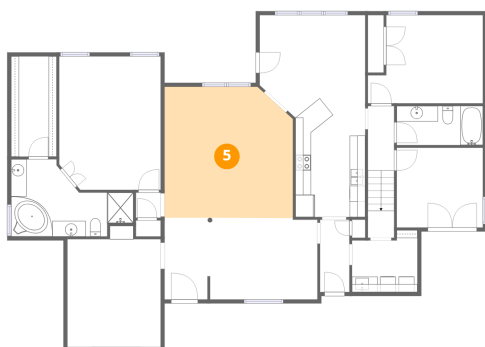
4 Floor 1 - Bedroom



Dimensions: 14'9" x 11'4"
Area: 167 sq. ft
Counted as living area: Yes

Heated: Yes
Finished: Yes
Enclosed: Yes
Contiguous: Yes
Permitted: Yes
Wet space: No
Addition: No
Conversion: No

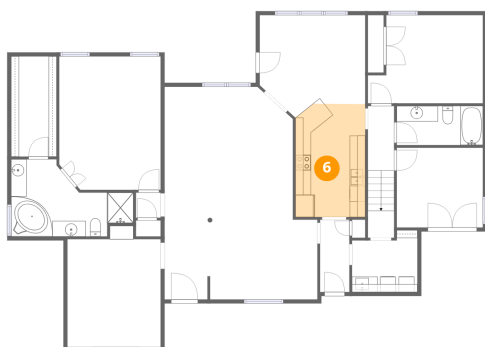
5 Floor 1 - Living Room



Dimensions: 16'6" x 16'10"
Area: 277 sq. ft
Counted as living area: Yes

Heated: Yes
Finished: Yes
Enclosed: Yes
Contiguous: Yes
Permitted: Yes
Wet space: No
Addition: No
Conversion: No

6 Floor 1 - Kitchen



Dimensions: 8'11" x 14'6"
Area: 130 sq. ft
Counted as living area: Yes

Heated: Yes
Finished: Yes
Enclosed: Yes
Contiguous: Yes
Permitted: Yes
Wet space: No
Addition: No
Conversion: No

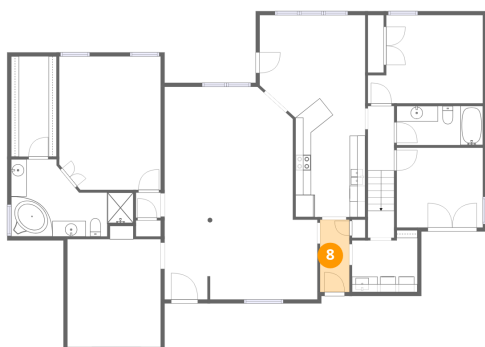
7 Floor 1 - Bath



Dimensions: 11'1" x 5'0"
Area: 55 sq. ft
Counted as living area: Yes

Heated: Yes
Finished: Yes
Enclosed: Yes
Contiguous: Yes
Permitted: Yes
Wet space: Yes
Addition: No
Conversion: No

8 Floor 1 - Hall



Dimensions: 3'9" x 9'3"
Area: 35 sq. ft
Counted as living area: Yes

Heated: Yes
Finished: Yes
Enclosed: Yes
Contiguous: Yes
Permitted: Yes
Wet space: No
Addition: No
Conversion: No

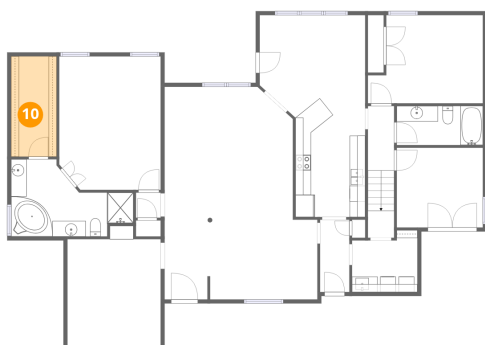
9 Floor 1 - Bedroom



Dimensions: 11'1" x 10'3"
Area: 113 sq. ft
Counted as living area: Yes

Heated: Yes
Finished: Yes
Enclosed: Yes
Contiguous: Yes
Permitted: Yes
Wet space: No
Addition: No
Conversion: No

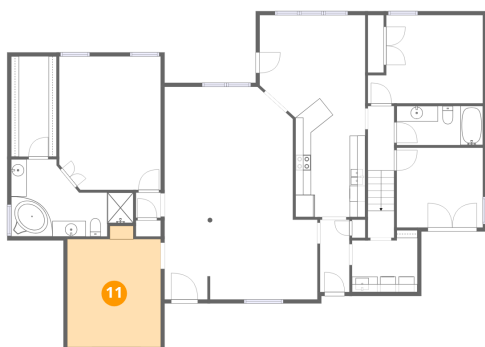
10 Floor 1 - W.I.C.



Dimensions: 5'10" x 12'10"
Area: 75 sq. ft
Counted as living area: Yes

Heated: Yes
Finished: Yes
Enclosed: Yes
Contiguous: Yes
Permitted: Yes
Wet space: No
Addition: No
Conversion: No

11 Floor 1 - Room



Dimensions: 12'0" x 15'6"
Area: 186 sq. ft
Counted as living area: Yes

Heated: Yes
Finished: Yes
Enclosed: Yes
Contiguous: Yes
Permitted: Yes
Wet space: No
Addition: No
Conversion: No

12 Floor 1 - Laundry



Dimensions: 8'5" x 7'11"
Area: 67 sq. ft
Counted as living area: Yes

Heated: Yes
Finished: Yes
Enclosed: Yes
Contiguous: Yes
Permitted: Yes
Wet space: No
Addition: No
Conversion: No

13 Floor 1 - Hall



Dimensions: 3'4" x 8'3"
Area: 28 sq. ft
Counted as living area: Yes

Heated: Yes
Finished: Yes
Enclosed: Yes
Contiguous: Yes
Permitted: Yes
Wet space: No
Addition: No
Conversion: No

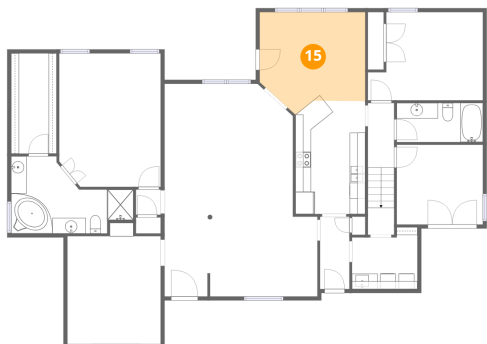
14 Floor 1 - Hall



Dimensions: 3'2" x 3'3"
Area: 10 sq. ft
Counted as living area: Yes

Heated: Yes
Finished: Yes
Enclosed: Yes
Contiguous: Yes
Permitted: Yes
Wet space: No
Addition: No
Conversion: No

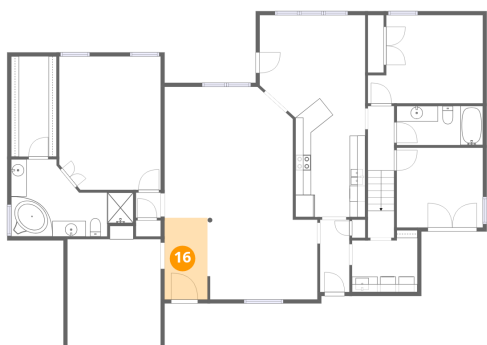
15 Floor 1 - Breakfast Nook



Dimensions: 13'7" x 13'2"
Area: 178 sq. ft
Counted as living area: Yes

Heated: Yes
Finished: Yes
Enclosed: Yes
Contiguous: Yes
Permitted: Yes
Wet space: No
Addition: No
Conversion: No

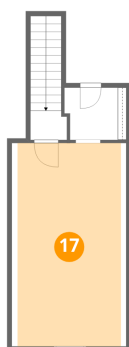
16 Floor 1 - Foyer



Dimensions: 5'6" x 10'5"
Area: 57 sq. ft
Counted as living area: Yes

Heated: Yes
Finished: Yes
Enclosed: Yes
Contiguous: Yes
Permitted: Yes
Wet space: No
Addition: No
Conversion: No

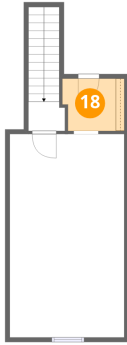
17 Floor 2 - Room



Dimensions: 12'6" x 22'2"
Area: 276 sq. ft
Counted as living area: Yes

Heated: Yes
Finished: Yes
Enclosed: Yes
Contiguous: Yes
Permitted: Yes
Wet space: No
Addition: No
Conversion: No

18 Floor 2 - Room



Dimensions: 6'9" x 5'8"
Area: 38 sq. ft
Counted as living area: Yes

Heated: Yes
Finished: Yes
Enclosed: Yes
Contiguous: Yes
Permitted: Yes
Wet space: No
Addition: No
Conversion: No

19 Floor 2 - Hall



Dimensions: 4'0" x 13'6"
Area: 54 sq. ft
Counted as living area: Yes

Heated: Yes
Finished: Yes
Enclosed: Yes
Contiguous: Yes
Permitted: Yes
Wet space: No
Addition: No
Conversion: No