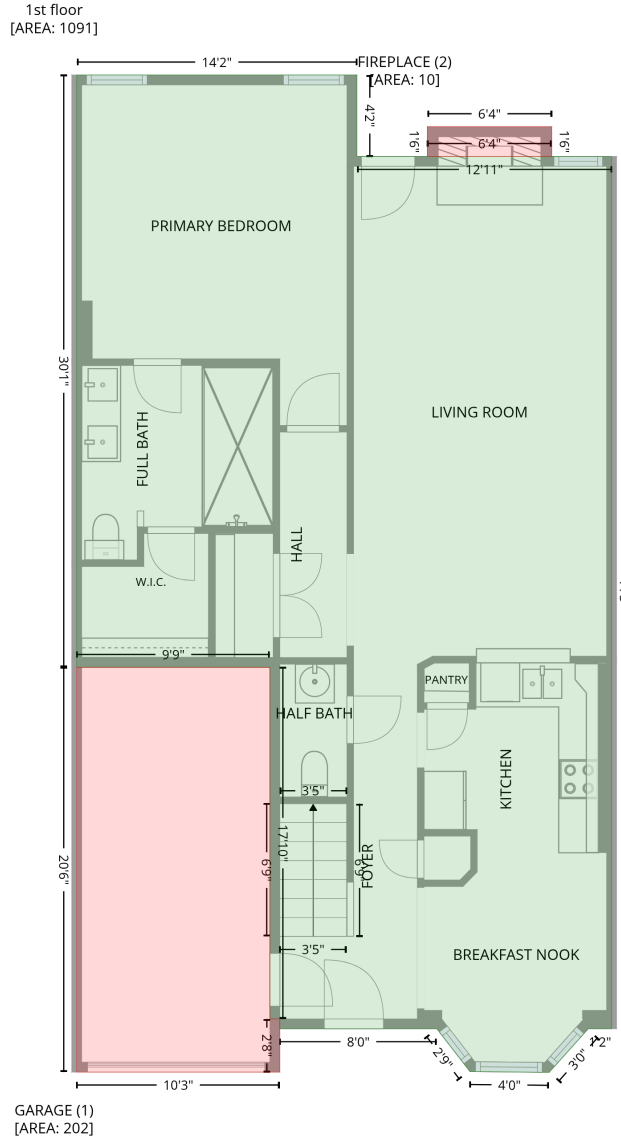


619 COLBERT way, Fort Mill, York County, South Carolina, United States, 29715

Gross Living Area: 1841 sq. ft

Level 1



Space	Area (sq. ft)	Calculation
1st floor (Living area)	1091	Coordinate Polygon Area Algorithm using inches $-((205.5 + 205.5) * (13.3 - 62.9) + (205.5 + 360.4) * (62.9 - 62.9) + (360.4 + 360.4) * (62.9 - 594.1) + (360.4 + 346.2) * (594.1 - 594.1) + (346.2 + 322.4) * (594.1 - 620.7) + (322.4 + 274.3) * (620.7 - 620.2) + (274.3 + 254.2) * (620.2 - 594.1) + (254.2 + 158.7) * (594.1 - 594.1) + (158.7 + 158.7) * (594.1 - 588.1) + (158.7 + 152.7) * (588.1 - 588.1) + (152.7 + 152.7) * (588.1 - 374) + (152.7 + 35.2) * (374 - 374) + (35.2 + 35.2) * (374 - 13.3) + (35.2 + 205.5) * (13.3 - 13.3)) * 0.5 * 0.00694$

619 COLbert way, Fort Mill, York County, South Carolina, United States, 29715

Gross Living Area: 1841 sq. ft

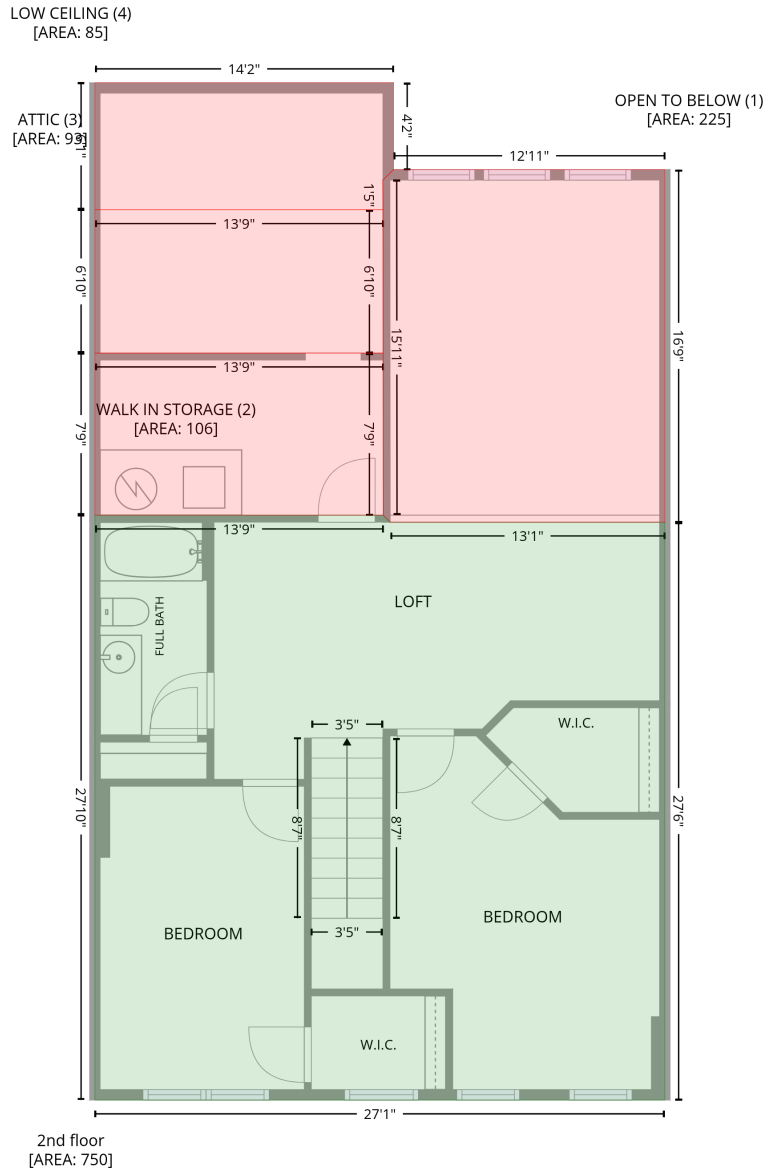
Level 1

Space	Area (sq. ft)	Calculation <small>Coordinate Polygon Area Algorithm using inches</small>
GARAGE (Non-living area)	202	$-((152.7 + 152.7) * (374 - 588.1) + (152.7 + 158.7) * (588.1 - 588.1) + (158.7 + 158.7) * (588.1 - 620.5) + (158.7 + 35.2) * (620.5 - 620.5) + (35.2 + 35.2) * (620.5 - 374) + (35.2 + 152.7) * (374 - 374)) * 0.5 * 0.00694$
FIREPLACE (Non-living area)	10	$-((324 + 324) * (44.8 - 62.9) + (324 + 248.3) * (62.9 - 62.9) + (248.3 + 248.3) * (62.9 - 44.8) + (248.3 + 324) * (44.8 - 44.8)) * 0.5 * 0.00694$

619 Colbert way, Fort Mill, York County, South Carolina, United States, 29715

Gross Living Area: 1841 sq. ft

Level 2



Space	Area (sq. ft)	Calculation
2nd floor (Living area)	750	Coordinate Polygon Area Algorithm using inches $-((199.7 + 203.7) * (260.2 - 264.2) + (203.7 + 360.4) * (264.2 - 264.2) + (360.4 + 360.4) * (264.2 - 594.1) + (360.4 + 35.2) * (594.1 - 594.1) + (35.2 + 35.2) * (594.1 - 260.2) + (35.2 + 199.7) * (260.2 - 260.2)) * 0.5 * 0.00694$
OPEN TO BELOW (Non-living area)	225	$-((360.4 + 360.4) * (62.9 - 264.2) + (360.4 + 203.7) * (264.2 - 264.2) + (203.7 + 199.7) * (264.2 - 260.2) + (199.7 + 199.5) * (260.2 - 68.9) + (199.5 + 205.5) * (68.9 - 62.9) + (205.5 + 360.4) * (62.9 - 62.9)) * 0.5 * 0.00694$

619 COLbert way, Fort Mill, York County, South Carolina, United States, 29715

Gross Living Area: 1841 sq. ft

Level 2

Space	Area (sq. ft)	Calculation <small>Coordinate Polygon Area Algorithm using inches</small>
WALK IN STORAGE (Non-living area)	106	$-((199.7 + 199.7) * (167.7 - 260.2) + (199.7 + 35.2) * (260.2 - 260.2) + (35.2 + 35.2) * (260.2 - 167.7) + (35.2 + 199.7) * (167.7 - 167.7)) * 0.5 * 0.00694$
ATTIC (Non-living area)	93	$-((199.7 + 199.7) * (85.8 - 167.7) + (199.7 + 35.2) * (167.7 - 167.7) + (35.2 + 35.2) * (167.7 - 85.8) + (35.2 + 199.7) * (85.8 - 85.8)) * 0.5 * 0.00694$
LOW CEILING (Non-living area)	85	$-((205.5 + 205.5) * (13.3 - 62.9) + (205.5 + 199.5) * (62.9 - 68.9) + (199.5 + 199.7) * (68.9 - 85.8) + (199.7 + 35.2) * (85.8 - 85.8) + (35.2 + 35.2) * (85.8 - 13.3) + (35.2 + 205.5) * (13.3 - 13.3)) * 0.5 * 0.00694$