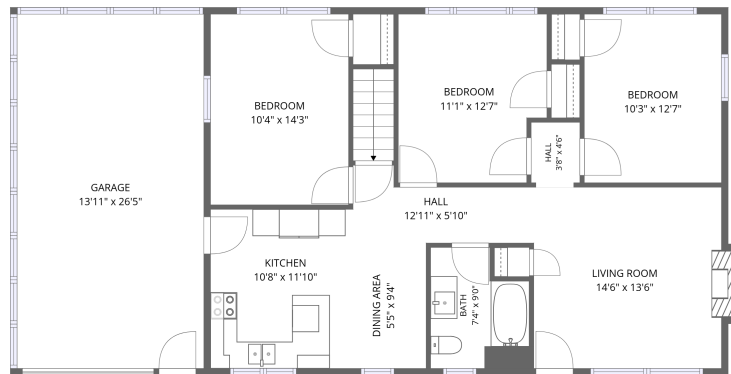
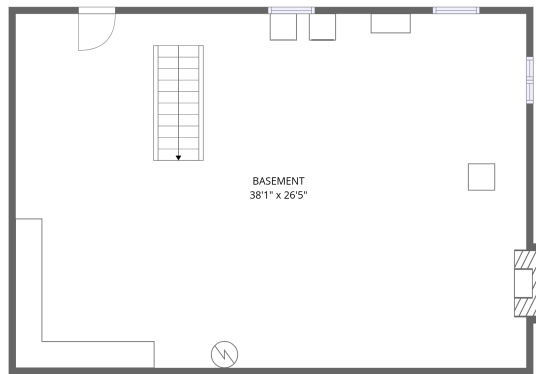


Home data report

90 Ann Sink Street, Rocky Mount, Virginia 24151, United States



1st floor



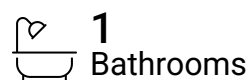
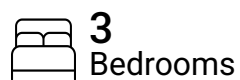
Basement

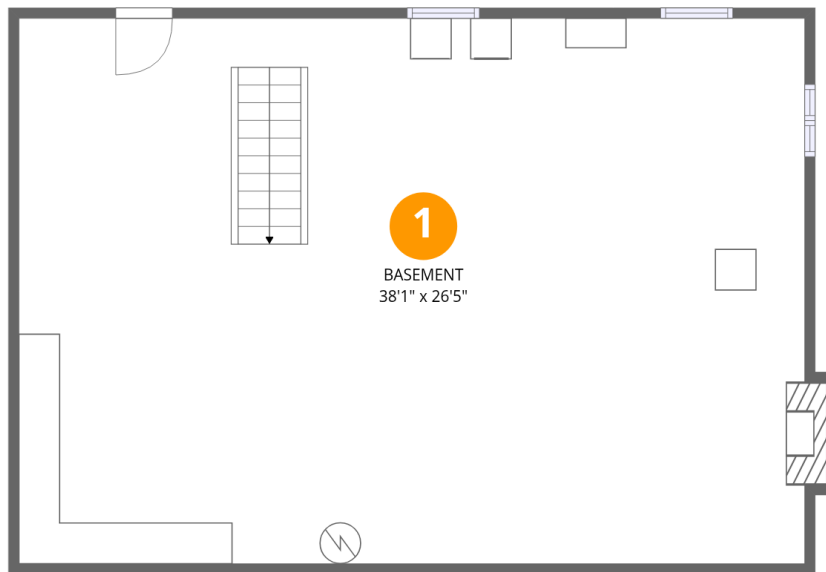
Total Area: 1379 sq. ft

Basement: 0 sq. ft, 1st Floor: 1379 sq. ft

Excluded: Basement 1010 sq. ft, Fireplace 12 sq. ft, Walls: 151 sq. ft

Property summary





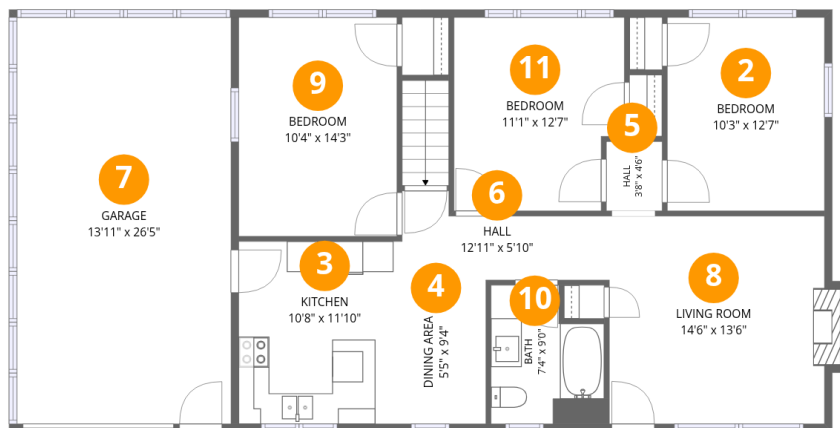
Room dimensions

Floor 1 Below grade

Total:0sqft

Excluded: 1016sqft

#		Dimensions	sqft	Counted as living area
1	Basement	38'1" x 26'5"	1013 sq. ft	No



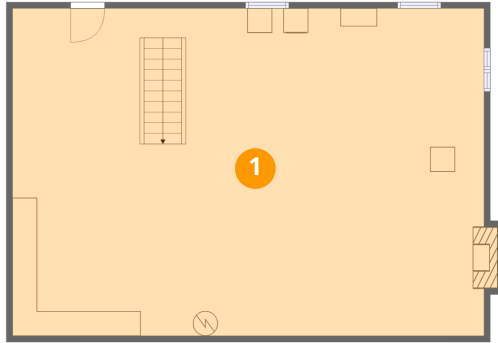
Room dimensions

Floor 2

Total:1379sqft Excluded: 6sqft

#		Dimensions	sqft	Counted as living area
2	Bedroom	10'3" x 12'7"	129 sq. ft	Yes
3	Kitchen	10'8" x 11'10"	126 sq. ft	Yes
4	Dining Area	5'5" x 9'4"	51 sq. ft	Yes
5	Hall	3'8" x 4'6"	16 sq. ft	Yes
6	Hall	12'11" x 5'10"	81 sq. ft	Yes
7	Garage	13'11" x 26'5"	368 sq. ft	Yes
8	Living Room	14'6" x 13'6"	197 sq. ft	Yes
9	Bedroom	10'4" x 14'3"	147 sq. ft	Yes
10	Bath	7'4" x 9'0"	54 sq. ft	Yes
11	Bedroom	11'1" x 12'7"	132 sq. ft	Yes

1 Floor 1 - Basement



Dimensions: 38'1" x 26'5"
Area: 1013 sq. ft
Counted as living area: No

Heated: Yes
Finished: No
Enclosed: Yes
Contiguous: Yes
Permitted: Yes
Wet space: No
Addition: No
Conversion: No

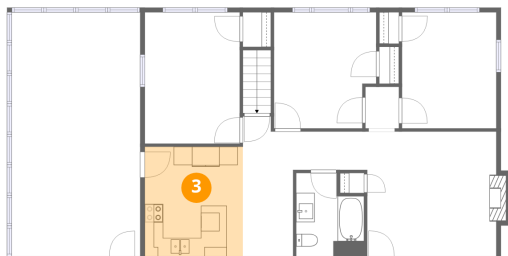
2 Floor 2 - Bedroom



Dimensions: 10'3" x 12'7"
Area: 129 sq. ft
Counted as living area: Yes

Heated: Yes
Finished: Yes
Enclosed: Yes
Contiguous: Yes
Permitted: Yes
Wet space: No
Addition: No
Conversion: No

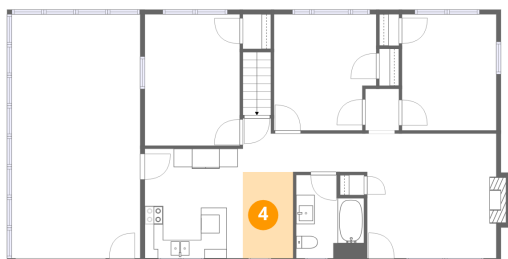
3 Floor 2 - Kitchen



Dimensions: 10'8" x 11'10"
Area: 126 sq. ft
Counted as living area: Yes

Heated: Yes
Finished: Yes
Enclosed: Yes
Contiguous: Yes
Permitted: Yes
Wet space: No
Addition: No
Conversion: No

4 Floor 2 - Dining Area



Dimensions: 5'5" x 9'4"
Area: 51 sq. ft
Counted as living area: Yes

Heated: Yes
Finished: Yes
Enclosed: Yes
Contiguous: Yes
Permitted: Yes
Wet space: No
Addition: No
Conversion: No

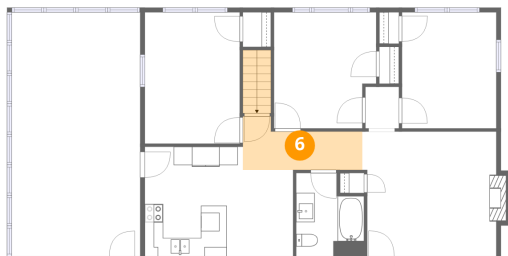
5 Floor 2 - Hall



Dimensions: 3'8" x 4'6"
Area: 16 sq. ft
Counted as living area: Yes

Heated: Yes
Finished: Yes
Enclosed: Yes
Contiguous: Yes
Permitted: Yes
Wet space: No
Addition: No
Conversion: No

6 Floor 2 - Hall



Dimensions: 12'11" x 5'10"
Area: 81 sq. ft
Counted as living area: Yes

Heated: Yes
Finished: Yes
Enclosed: Yes
Contiguous: Yes
Permitted: Yes
Wet space: No
Addition: No
Conversion: No

7 Floor 2 - Garage



Dimensions: 13'11" x 26'5"
Area: 368 sq. ft
Counted as living area: No

Heated: No
Finished: Yes
Enclosed: Yes
Contiguous: Yes
Permitted: Yes
Wet space: No
Addition: No
Conversion: No

8 Floor 2 - Living Room



Dimensions: 14'6" x 13'6"
Area: 197 sq. ft
Counted as living area: Yes

Heated: Yes
Finished: Yes
Enclosed: Yes
Contiguous: Yes
Permitted: Yes
Wet space: No
Addition: No
Conversion: No

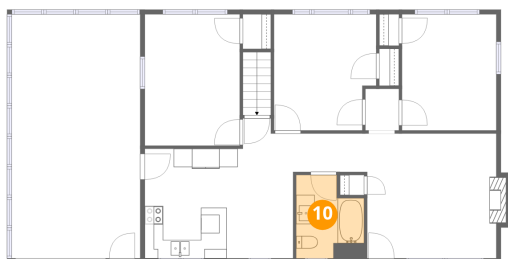
9 Floor 2 - Bedroom



Dimensions: 10'4" x 14'3"
Area: 147 sq. ft
Counted as living area: Yes

Heated: Yes
Finished: Yes
Enclosed: Yes
Contiguous: Yes
Permitted: Yes
Wet space: No
Addition: No
Conversion: No

10 Floor 2 - Bath



Dimensions: 7'4" x 9'0"
Area: 54 sq. ft
Counted as living area: Yes

Heated: Yes
Finished: Yes
Enclosed: Yes
Contiguous: Yes
Permitted: Yes
Wet space: Yes
Addition: No
Conversion: No

11 Floor 2 - Bedroom



Dimensions: 11'1" x 12'7"
Area: 132 sq. ft
Counted as living area: Yes

Heated: Yes
Finished: Yes
Enclosed: Yes
Contiguous: Yes
Permitted: Yes
Wet space: No
Addition: No
Conversion: No