

Home data report

940 N 8th St, Spearfish, SD, US




Total Area: 3454 sq. ft

Basement: 1561 sq. ft, 1st Floor: 1893 sq. ft

Excluded: Storage 217 sq. ft, Utility 61 sq. ft, Garage 921 sq. ft, Porch 60 sq. ft, Patio 72 sq. ft, Walls: 265 sq. ft

Property summary

 **2** Floors

 **5** Bedrooms

 **3** Bathrooms

Home data report

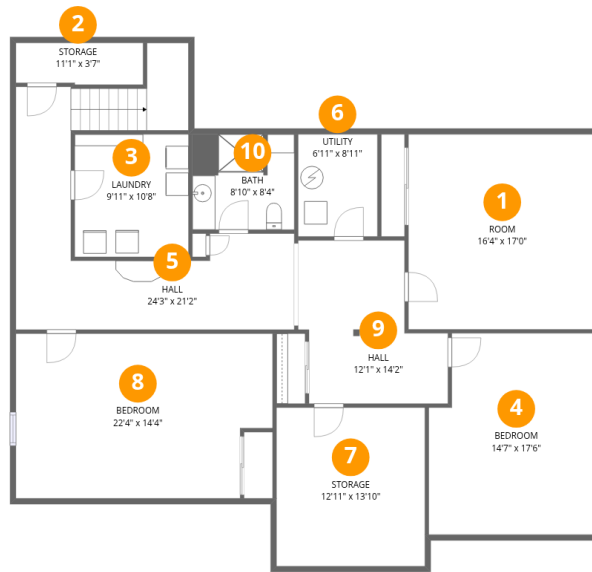
940 N 8th St, Spearfish, SD, US

 **1**
Half baths

 **1**
Garages

Home data report

940 N 8th St, Spearfish, SD, US



Room dimensions

Floor 1 Below grade

Total: 1561 sqft

Excluded: 278 sqft

#		Dimensions	sqft	Counted as living area
1	Room	16'4" x 17'0"	277 sq. ft	Yes
2	Storage	11'1" x 3'7"	40 sq. ft	No
3	Laundry	9'11" x 10'8"	106 sq. ft	Yes
4	Bedroom	14'7" x 17'6"	255 sq. ft	Yes
5	Hall	24'3" x 21'2"	512 sq. ft	Yes
6	Utility	6'11" x 8'11"	61 sq. ft	No
7	Storage	12'11" x 13'10"	178 sq. ft	No
8	Bedroom	22'4" x 14'4"	320 sq. ft	Yes
9	Hall	12'1" x 14'2"	172 sq. ft	Yes
10	Bath	8'10" x 8'4"	73 sq. ft	Yes



Room dimensions

Floor 2

Total: 1893sqft

Excluded: 1053sqft

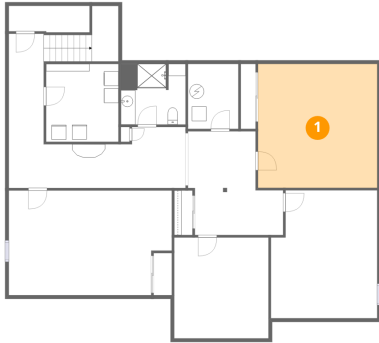
#		Dimensions	sqft	Counted as living area
11	Bath	8'3" x 8'7"	70 sq. ft	Yes
12	Garage	29'2" x 32'11"	958 sq. ft	No
13	Laundry	8'5" x 5'11"	50 sq. ft	Yes
14	Bedroom	12'11" x 13'10"	178 sq. ft	Yes
15	Bath	8'3" x 8'4"	68 sq. ft	Yes
16	Hall	12'9" x 5'11"	75 sq. ft	Yes
17	Porch	7'10" x 5'3"	41 sq. ft	No
18	Entry	6'4" x 7'7"	48 sq. ft	Yes
19	Bedroom	11'10" x 11'1"	130 sq. ft	Yes
20	Eat-in Kitchen	15'5" x 20'10"	321 sq. ft	Yes
21	Dining Area	12'10" x 10'6"	135 sq. ft	Yes

Home data report

940 N 8th St,Spearfish,SD,US

#		Dimensions	sqft	Counted as living area
22	Foyer	6'11" x 8'11"	61 sq. ft	Yes
23	Primary Bedroom	12'7" x 17'2"	216 sq. ft	Yes
24	Living Room	15'10" x 22'9"	361 sq. ft	Yes
25	Patio	8'6" x 8'5"	71 sq. ft	No
26	Bath	4'0" x 8'2"	33 sq. ft	Yes

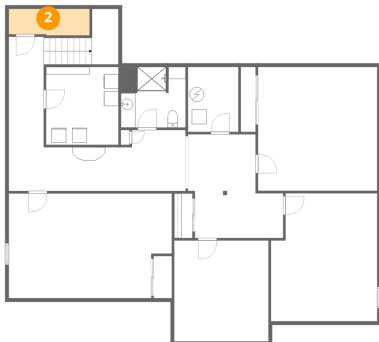
1 Floor 1 - Room



Dimensions: 16'4" x 17'0"
Area: 277 sq. ft
Counted as living area: Yes

Heated: Yes
Finished: Yes
Enclosed: Yes
Contiguous: Yes
Permitted: Yes
Wet space: No
Addition: No
Conversion: No

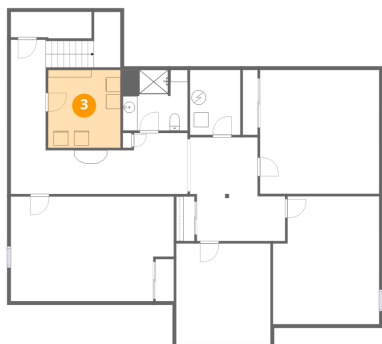
2 Floor 1 - Storage



Dimensions: 11'1" x 3'7"
Area: 40 sq. ft
Counted as living area: No

Heated: No
Finished: No
Enclosed: No
Contiguous: Yes
Permitted: Yes
Wet space: No
Addition: No
Conversion: No

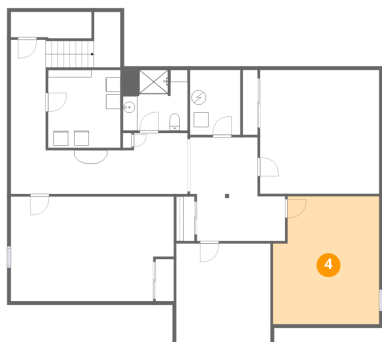
3 Floor 1 - Laundry



Dimensions: 9'11" x 10'8"
Area: 106 sq. ft
Counted as living area: Yes

Heated: Yes
Finished: Yes
Enclosed: Yes
Contiguous: Yes
Permitted: Yes
Wet space: No
Addition: No
Conversion: No

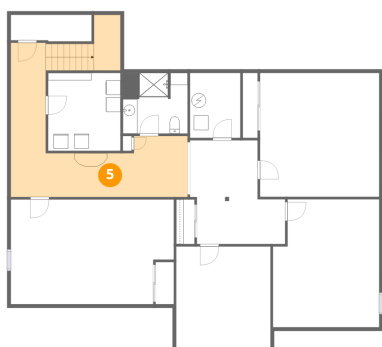
4 Floor 1 - Bedroom



Dimensions: 14'7" x 17'6"
Area: 255 sq. ft
Counted as living area: Yes

Heated: Yes
Finished: Yes
Enclosed: Yes
Contiguous: Yes
Permitted: Yes
Wet space: No
Addition: No
Conversion: No

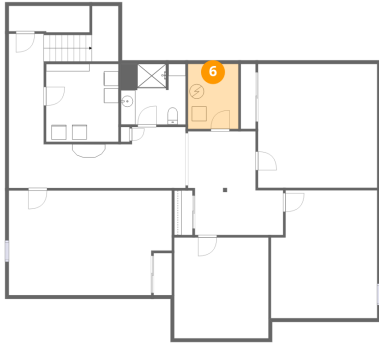
5 Floor 1 - Hall



Dimensions: 24'3" x 21'2"
Area: 512 sq. ft
Counted as living area: Yes

Heated: Yes
Finished: Yes
Enclosed: Yes
Contiguous: Yes
Permitted: Yes
Wet space: No
Addition: No
Conversion: No

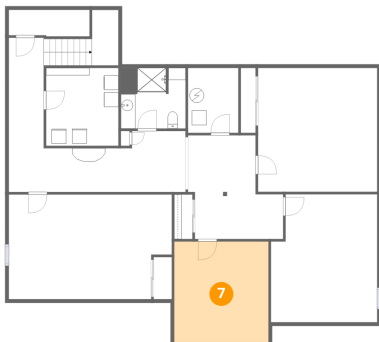
6 Floor 1 - Utility



Dimensions: 6'11" x 8'11"
Area: 61 sq. ft
Counted as living area: No

Heated: Yes
Finished: No
Enclosed: Yes
Contiguous: Yes
Permitted: Yes
Wet space: No
Addition: No
Conversion: No

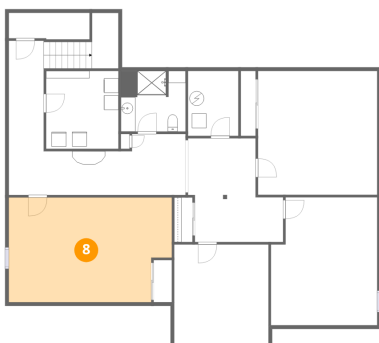
7 Floor 1 - Storage



Dimensions: 12'11" x 13'10"
Area: 178 sq. ft
Counted as living area: No

Heated: No
Finished: No
Enclosed: No
Contiguous: Yes
Permitted: Yes
Wet space: No
Addition: No
Conversion: No

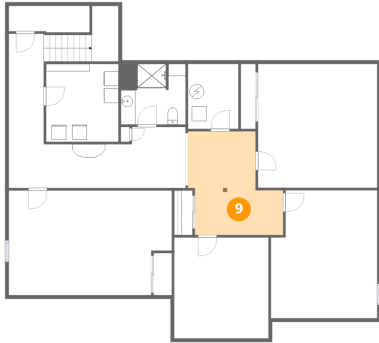
8 Floor 1 - Bedroom



Dimensions: 22'4" x 14'4"
Area: 320 sq. ft
Counted as living area: Yes

Heated: Yes
Finished: Yes
Enclosed: Yes
Contiguous: Yes
Permitted: Yes
Wet space: No
Addition: No
Conversion: No

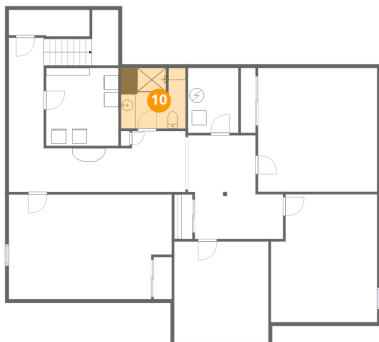
9 Floor 1 - Hall



Dimensions: 12'1" x 14'2"
Area: 172 sq. ft
Counted as living area: Yes

Heated: Yes
Finished: Yes
Enclosed: Yes
Contiguous: Yes
Permitted: Yes
Wet space: No
Addition: No
Conversion: No

10 Floor 1 - Bath



Dimensions: 8'10" x 8'4"
Area: 73 sq. ft
Counted as living area: Yes

Heated: Yes
Finished: Yes
Enclosed: Yes
Contiguous: Yes
Permitted: Yes
Wet space: Yes
Addition: No
Conversion: No

11 Floor 2 - Bath



Dimensions: 8'3" x 8'7"
Area: 70 sq. ft
Counted as living area: Yes

Heated: Yes
Finished: Yes
Enclosed: Yes
Contiguous: Yes
Permitted: Yes
Wet space: Yes
Addition: No
Conversion: No

12 Floor 2 - Garage



Dimensions: 29'2" x 32'11"
Area: 958 sq. ft
Counted as living area: No

Heated: No
Finished: No
Enclosed: Yes
Contiguous: Yes
Permitted: Yes
Wet space: No
Addition: No
Conversion: No

13 Floor 2 - Laundry



Dimensions: 8'5" x 5'11"
Area: 50 sq. ft
Counted as living area: Yes

Heated: Yes
Finished: Yes
Enclosed: Yes
Contiguous: Yes
Permitted: Yes
Wet space: No
Addition: No
Conversion: No

14 Floor 2 - Bedroom



Dimensions: 12'11" x 13'10"
Area: 178 sq. ft
Counted as living area: Yes

Heated: Yes
Finished: Yes
Enclosed: Yes
Contiguous: Yes
Permitted: Yes
Wet space: No
Addition: No
Conversion: No

15 Floor 2 - Bath



Dimensions: 8'3" x 8'4"
Area: 68 sq. ft
Counted as living area: Yes

Heated: Yes
Finished: Yes
Enclosed: Yes
Contiguous: Yes
Permitted: Yes
Wet space: Yes
Addition: No
Conversion: No

16 Floor 2 - Hall



Dimensions: 12'9" x 5'11"
Area: 75 sq. ft
Counted as living area: Yes

Heated: Yes
Finished: Yes
Enclosed: Yes
Contiguous: Yes
Permitted: Yes
Wet space: No
Addition: No
Conversion: No

17 Floor 2 - Porch



Dimensions: 7'10" x 5'3"
Area: 41 sq. ft
Counted as living area: No

Heated: No
Finished: No
Enclosed: No
Contiguous: Yes
Permitted: Yes
Wet space: No
Addition: No
Conversion: No

18 Floor 2 - Entry



Dimensions: 6'4" x 7'7"
Area: 48 sq. ft
Counted as living area: Yes

Heated: Yes
Finished: Yes
Enclosed: Yes
Contiguous: Yes
Permitted: Yes
Wet space: No
Addition: No
Conversion: No

19 Floor 2 - Bedroom



Dimensions: 11'10" x 11'1"
Area: 130 sq. ft
Counted as living area: Yes

Heated: Yes
Finished: Yes
Enclosed: Yes
Contiguous: Yes
Permitted: Yes
Wet space: No
Addition: No
Conversion: No

20 Floor 2 - Eat-in Kitchen



Dimensions: 15'5" x 20'10"
Area: 321 sq. ft
Counted as living area: Yes

Heated: Yes
Finished: Yes
Enclosed: Yes
Contiguous: Yes
Permitted: Yes
Wet space: No
Addition: No
Conversion: No

21 Floor 2 - Dining Area



Dimensions: 12'10" x 10'6"
Area: 135 sq. ft
Counted as living area: Yes

Heated: Yes
Finished: Yes
Enclosed: Yes
Contiguous: Yes
Permitted: Yes
Wet space: No
Addition: No
Conversion: No

22 Floor 2 - Foyer



Dimensions: 6'11" x 8'11"
Area: 61 sq. ft
Counted as living area: Yes

Heated: Yes
Finished: Yes
Enclosed: Yes
Contiguous: Yes
Permitted: Yes
Wet space: No
Addition: No
Conversion: No

23 Floor 2 - Primary Bedroom



Dimensions: 12'7" x 17'2"
Area: 216 sq. ft
Counted as living area: Yes

Heated: Yes
Finished: Yes
Enclosed: Yes
Contiguous: Yes
Permitted: Yes
Wet space: No
Addition: No
Conversion: No

24 Floor 2 - Living Room



Dimensions: 15'10" x 22'9"
Area: 361 sq. ft
Counted as living area: Yes

Heated: Yes
Finished: Yes
Enclosed: Yes
Contiguous: Yes
Permitted: Yes
Wet space: No
Addition: No
Conversion: No

25 Floor 2 - Patio



Dimensions: 8'6" x 8'5"
Area: 71 sq. ft
Counted as living area: No

Heated: No
Finished: No
Enclosed: No
Contiguous: Yes
Permitted: Yes
Wet space: No
Addition: No
Conversion: No

26 Floor 2 - Bath



Dimensions: 4'0" x 8'2"
Area: 33 sq. ft
Counted as living area: Yes

Heated: Yes
Finished: Yes
Enclosed: Yes
Contiguous: Yes
Permitted: Yes
Wet space: Yes
Addition: No
Conversion: No