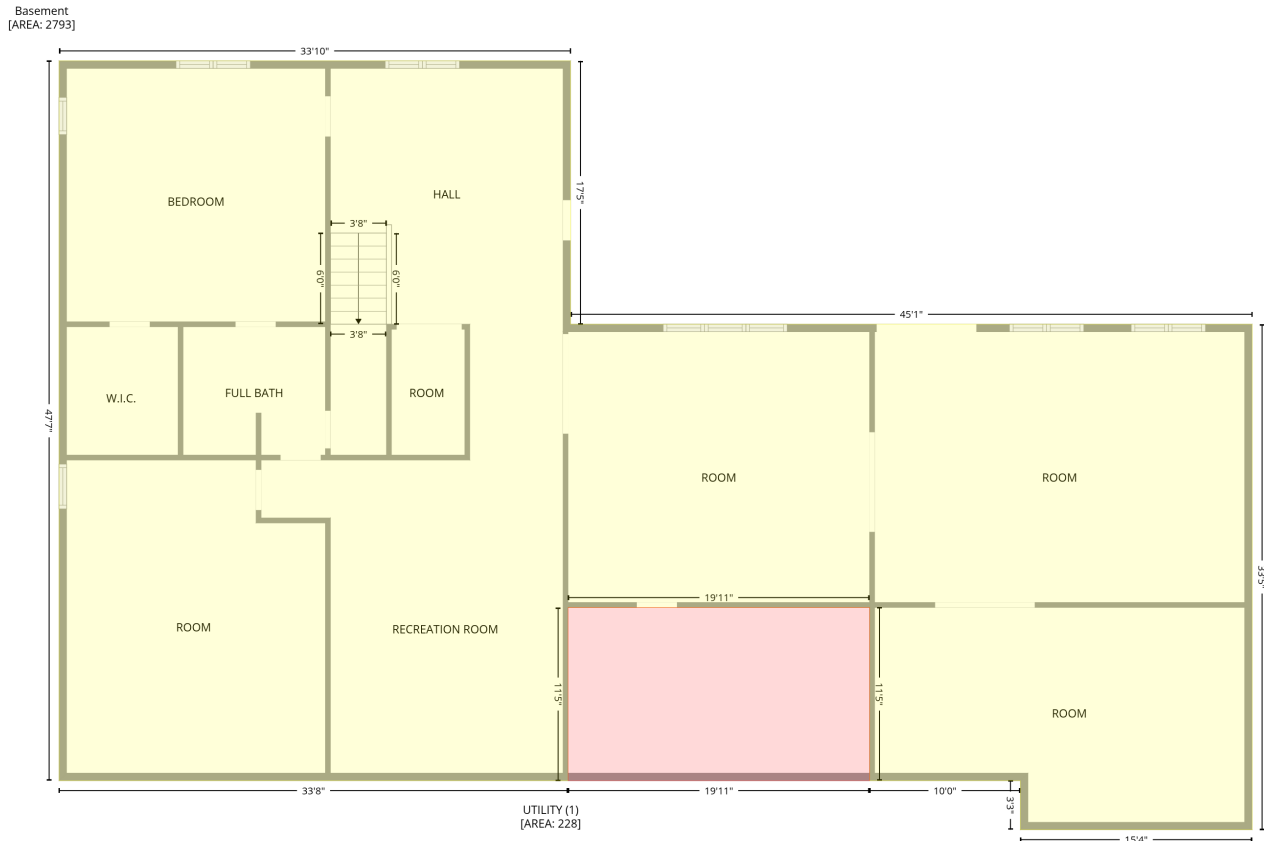


796 Tanglewood Dr, Bracey, VA, US

Gross Living Area: 3022 sq. ft

Level 1 - Below Grade

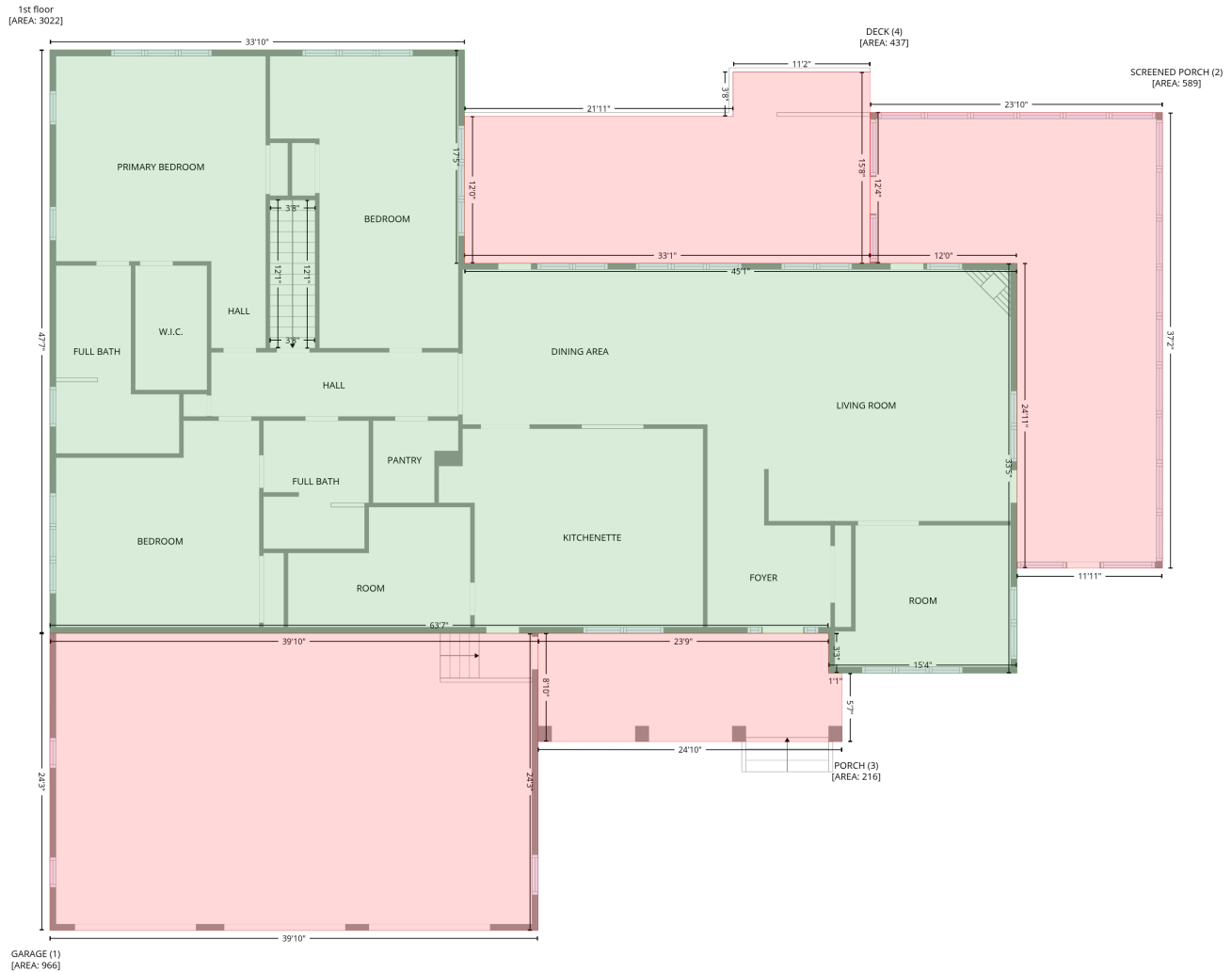


Space	Area (sq. ft)	Calculation
Basement (Living area)	2793	Coordinate Polygon Area Algorithm using inches $-((407.5 + 407.5) * (5.8 - 214.9) + (407.5 + 948.4) * (214.9 - 214.9) + (948.4 + 948.4) * (214.9 - 616.1) + (948.4 + 764.5) * (616.1 - 616.1) + (764.5 + 764.5) * (616.1 - 577.2) + (764.5 + 644.8) * (577.2 - 577.2) + (644.8 + 644.8) * (577.2 - 439.7) + (644.8 + 405.5) * (439.7 - 439.7) + (405.5 + 405.5) * (439.7 - 577.2) + (405.5 + 1.5) * (577.2 - 577.2) + (1.5 + 1.5) * (577.2 - 5.8) + (1.5 + 407.5) * (5.8 - 5.8)) * 0.5 * 0.00694$
UTILITY (Non-living area)	228	$-((644.8 + 644.8) * (439.7 - 577.2) + (644.8 + 405.5) * (577.2 - 577.2) + (405.5 + 405.5) * (577.2 - 439.7) + (405.5 + 644.8) * (439.7 - 439.7)) * 0.5 * 0.00694$

796 Tanglewood Dr, Bracey, VA, US

Gross Living Area: 3022 sq. ft

Level 2



Space	Area (sq. ft)	Calculation
1st floor (Living area)	3022	$-\left((407.5 + 407.5) * (5.8 - 214.9) + (407.5 + 948.4) * (214.9 - 214.9) + (948.4 + 948.4) * (214.9 - 616.1) + (948.4 + 764) * (616.1 - 616.1) + (764 + 764) * (616.1 - 577.2) + (764 + 1.5) * (577.2 - 577.2) + (1.5 + 1.5) * (577.2 - 5.8) + (1.5 + 407.5) * (5.8 - 5.8)\right) * 0.5 * 0.00694$
GARAGE (Non-living area)	966	$-\left((479.5 + 479.5) * (577.2 - 868.1) + (479.5 + 1.5) * (868.1 - 868.1) + (1.5 + 1.5) * (868.1 - 577.2) + (1.5 + 479.5) * (577.2 - 577.2)\right) * 0.5 * 0.00694$
SCREENED PORCH (Non-living area)	589	$-\left((1090.9 + 1090.9) * (67 - 513.4) + (1090.9 + 948.4) * (513.4 - 513.4) + (948.4 + 948.4) * (513.4 - 214.9) + (948.4 + 804.6) * (214.9 - 214.9) + (804.6 + 804.6) * (214.9 - 67) + (804.6 + 1090.9) * (67 - 67)\right) * 0.5 * 0.00694$
PORCH (Non-living area)	216	$-\left((764 + 764) * (577.2 - 616.1) + (764 + 777.3) * (616.1 - 616.1) + (777.3 + 777.3) * (616.1 - 683.3) + (777.3 + 479.5) * (683.3 - 683.2) + (479.5 + 479.5) * (683.2 - 577.2) + (479.5 + 764) * (577.2 - 577.2)\right) * 0.5 * 0.00694$

796 Tanglewood Dr,Bracey,VA,US

Gross Living Area: 3022 sq. ft

Level 2

Space	Area (sq. ft)	Calculation <small>Coordinate Polygon Area Algorithm using inches</small>
DECK (Non-living area)	437	$-\left((804.6 + 804.6) * (27.4 - 214.9) + (804.6 + 407.5) * (214.9 - 214.9) + (407.5 + 407.5) * (214.9 - 71) + (407.5 + 670.5) * (71 - 71) + (670.5 + 670.5) * (71 - 27.4) + (670.5 + 804.6) * (27.4 - 27.4)\right) * 0.5 * 0.00694$