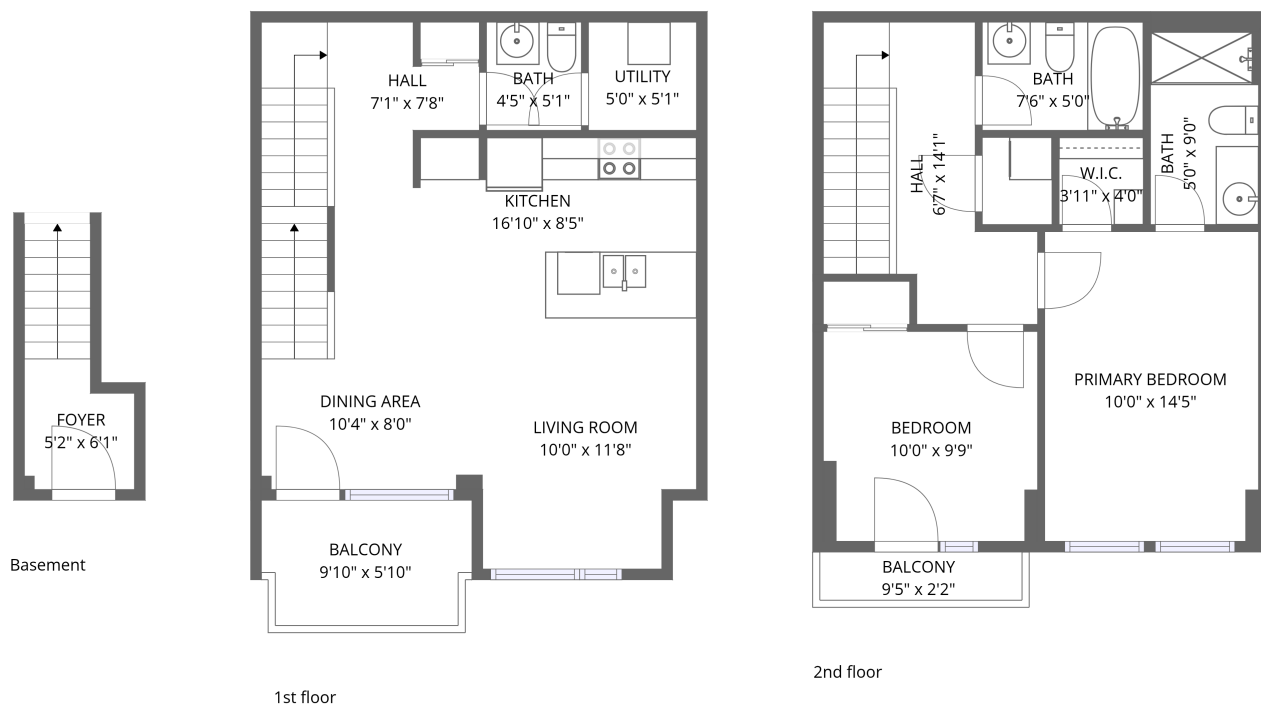


## Home data report

78 Holmwood Avenue, Glebe - Dows Lake, The Glebe, Ottawa, Ontario, Canada, K1S 5V1




**Total Area: 1011 sq. ft**

Basement: 47 sq. ft, 1st Floor: 474 sq. ft, 2nd Floor: 490 sq. ft

Excluded: Balcony 75 sq. ft, Walls: 97 sq. ft

## Property summary

 **3** Floors

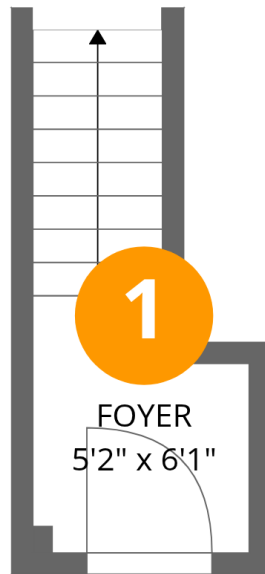
 **2** Bedrooms

 **2** Bathrooms

 **1** Half baths

Home data report

78 Holmwood Avenue, Glebe - Dows Lake, The Glebe, Ottawa, Ontario, Canada, K1S 5V1



Room dimensions

Floor 1 Below grade

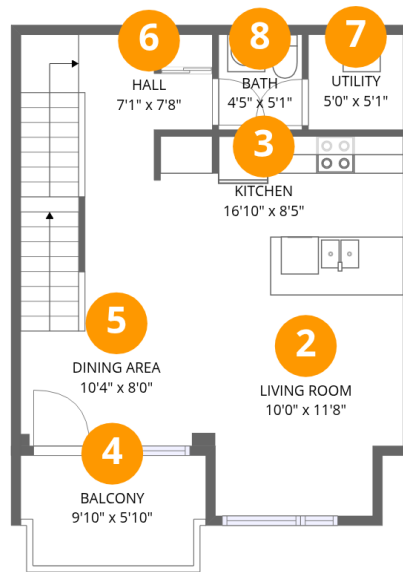
Total:47sqft

Excluded: 0sqft

#		Dimensions	sqft	Counted as living area
1	Foyer	5'2" x 6'1"	47 sq. ft	Yes

## Home data report

78 Holmwood Avenue, Glebe - Dows Lake, The Glebe, Ottawa, Ontario, Canada, K1S 5V1



## Room dimensions

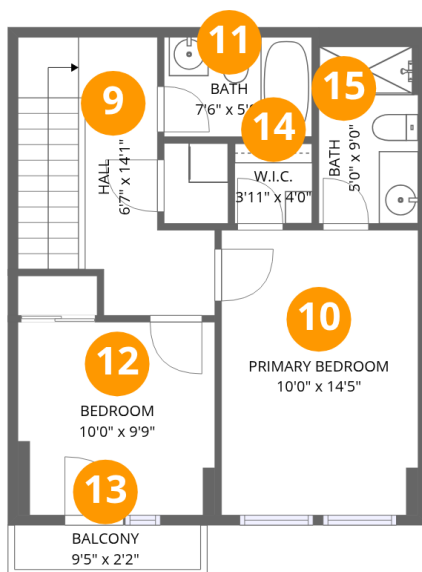
Floor 2

Total:474sqft Excluded: 54sqft

#		Dimensions	sqft	Counted as living area
2	Living Room	10'0" x 11'8"	111 sq. ft	Yes
3	Kitchen	16'10" x 8'5"	132 sq. ft	Yes
4	Balcony	9'10" x 5'10"	54 sq. ft	No
5	Dining Area	10'4" x 8'0"	99 sq. ft	Yes
6	Hall	7'1" x 7'8"	67 sq. ft	Yes
7	Utility	5'0" x 5'1"	25 sq. ft	Yes
8	Bath	4'5" x 5'1"	22 sq. ft	Yes

## Home data report

78 Holmwood Avenue, Glebe - Dows Lake, The Glebe, Ottawa, Ontario, Canada, K1S 5V1



## Room dimensions

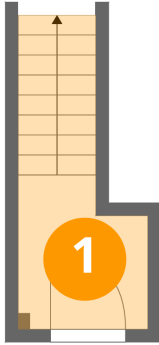
Floor 3

Total:490sqft Excluded: 21sqft

#		Dimensions	sqft	Counted as living area
9	Hall	6'7" x 14'1"	102 sq. ft	Yes
10	Primary Bedroom	10'0" x 14'5"	144 sq. ft	Yes
11	Bath	7'6" x 5'0"	38 sq. ft	Yes
12	Bedroom	10'0" x 9'9"	98 sq. ft	Yes
13	Balcony	9'5" x 2'2"	21 sq. ft	No
14	W.I.C.	3'11" x 4'0"	16 sq. ft	Yes
15	Bath	5'0" x 9'0"	45 sq. ft	Yes

78 Holmwood Avenue, Glebe - Dows Lake, The Glebe, Ottawa, Ontario, Canada, K1S 5V1

## 1 Floor 1 - Foyer



Dimensions: 5'2" x 6'1"  
Area: 47 sq. ft  
Counted as living area: Yes

Heated: Yes  
Finished: Yes  
Enclosed: Yes  
Contiguous: Yes  
Permitted: Yes  
Wet space: No  
Addition: No  
Conversion: No

## 2 Floor 2 - Living Room

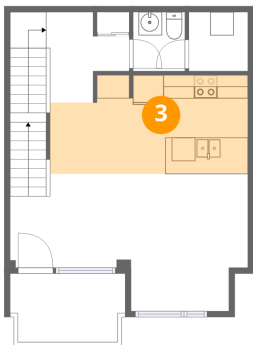


Dimensions: 10'0" x 11'8"  
Area: 111 sq. ft  
Counted as living area: Yes

Heated: Yes  
Finished: Yes  
Enclosed: Yes  
Contiguous: Yes  
Permitted: Yes  
Wet space: No  
Addition: No  
Conversion: No

78 Holmwood Avenue, Glebe - Dows Lake, The Glebe, Ottawa, Ontario, Canada, K1S 5V1

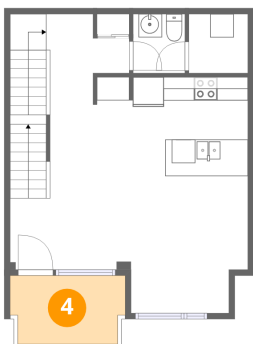
**3** Floor 2 - Kitchen



Dimensions: 16'10" x 8'5"  
Area: 132 sq. ft  
Counted as living area: Yes

Heated: Yes  
Finished: Yes  
Enclosed: Yes  
Contiguous: Yes  
Permitted: Yes  
Wet space: No  
Addition: No  
Conversion: No

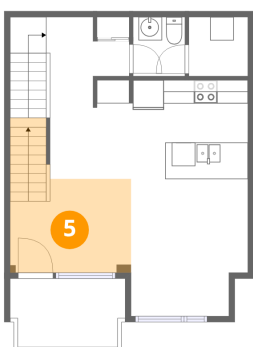
**4** Floor 2 - Balcony



Dimensions: 9'10" x 5'10"  
Area: 54 sq. ft  
Counted as living area: No

Heated: No  
Finished: No  
Enclosed: No  
Contiguous: Yes  
Permitted: Yes  
Wet space: No  
Addition: No  
Conversion: No

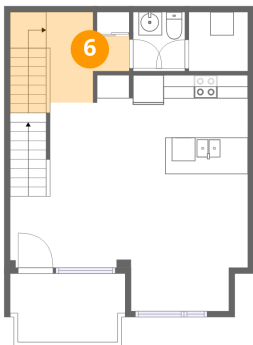
**5** Floor 2 - Dining Area



Dimensions: 10'4" x 8'0"  
Area: 99 sq. ft  
Counted as living area: Yes

Heated: Yes  
Finished: Yes  
Enclosed: Yes  
Contiguous: Yes  
Permitted: Yes  
Wet space: No  
Addition: No  
Conversion: No

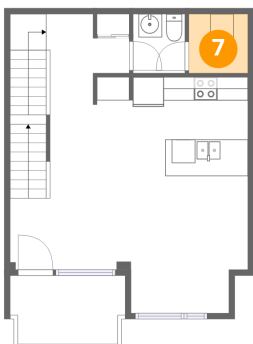
## 6 Floor 2 - Hall



Dimensions: 7'1" x 7'8"  
Area: 67 sq. ft  
Counted as living area: Yes

Heated: Yes  
Finished: Yes  
Enclosed: Yes  
Contiguous: Yes  
Permitted: Yes  
Wet space: No  
Addition: No  
Conversion: No

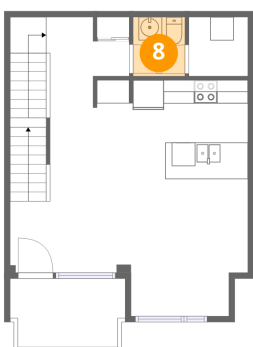
## 7 Floor 2 - Utility



Dimensions: 5'0" x 5'1"  
Area: 25 sq. ft  
Counted as living area: Yes

Heated: Yes  
Finished: Yes  
Enclosed: Yes  
Contiguous: Yes  
Permitted: Yes  
Wet space: No  
Addition: No  
Conversion: No

## 8 Floor 2 - Bath

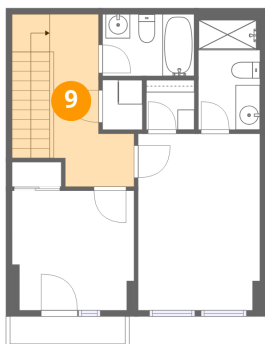


Dimensions: 4'5" x 5'1"  
Area: 22 sq. ft  
Counted as living area: Yes

Heated: Yes  
Finished: Yes  
Enclosed: Yes  
Contiguous: Yes  
Permitted: Yes  
Wet space: Yes  
Addition: No  
Conversion: No

78 Holmwood Avenue, Glebe - Dows Lake, The Glebe, Ottawa, Ontario, Canada, K1S 5V1

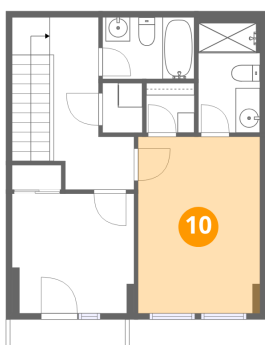
**9** Floor 3 - Hall



Dimensions: 6'7" x 14'1"  
Area: 102 sq. ft  
Counted as living area: Yes

Heated: Yes  
Finished: Yes  
Enclosed: Yes  
Contiguous: Yes  
Permitted: Yes  
Wet space: No  
Addition: No  
Conversion: No

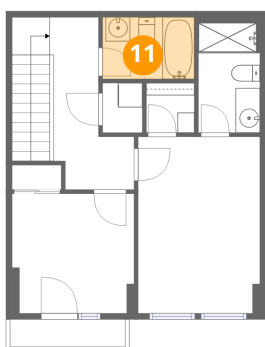
**10** Floor 3 - Primary Bedroom



Dimensions: 10'0" x 14'5"  
Area: 144 sq. ft  
Counted as living area: Yes

Heated: Yes  
Finished: Yes  
Enclosed: Yes  
Contiguous: Yes  
Permitted: Yes  
Wet space: No  
Addition: No  
Conversion: No

**11** Floor 3 - Bath

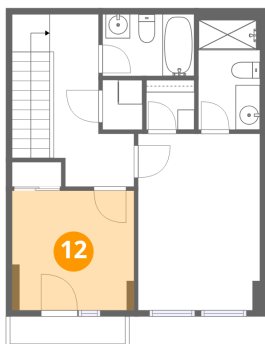


Dimensions: 7'6" x 5'0"  
Area: 38 sq. ft  
Counted as living area: Yes

Heated: Yes  
Finished: Yes  
Enclosed: Yes  
Contiguous: Yes  
Permitted: Yes  
Wet space: Yes  
Addition: No  
Conversion: No

78 Holmwood Avenue, Glebe - Dows Lake, The Glebe, Ottawa, Ontario, Canada, K1S 5V1

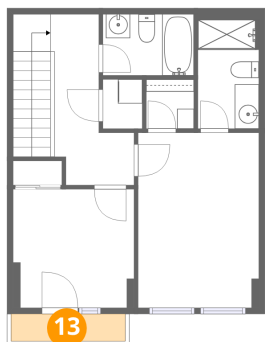
**12** Floor 3 - Bedroom



Dimensions: 10'0" x 9'9"  
Area: 98 sq. ft  
Counted as living area: Yes

Heated: Yes  
Finished: Yes  
Enclosed: Yes  
Contiguous: Yes  
Permitted: Yes  
Wet space: No  
Addition: No  
Conversion: No

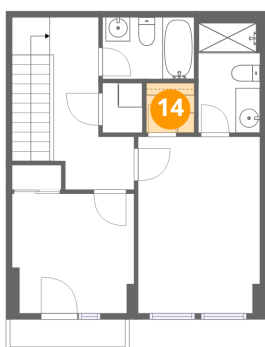
**13** Floor 3 - Balcony



Dimensions: 9'5" x 2'2"  
Area: 21 sq. ft  
Counted as living area: No

Heated: No  
Finished: No  
Enclosed: No  
Contiguous: Yes  
Permitted: Yes  
Wet space: No  
Addition: No  
Conversion: No

**14** Floor 3 - W.I.C.



Dimensions: 3'11" x 4'0"  
Area: 16 sq. ft  
Counted as living area: Yes

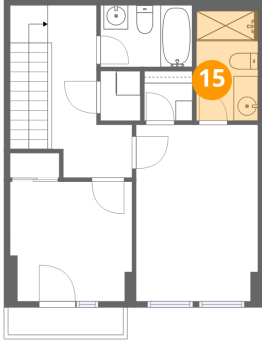
Heated: Yes  
Finished: Yes  
Enclosed: Yes  
Contiguous: Yes  
Permitted: Yes  
Wet space: No  
Addition: No  
Conversion: No

Home data report

78 Holmwood Avenue, Glebe - Dows Lake, The Glebe, Ottawa,  
Ontario, Canada, K1S 5V1

**15** Floor 3 - Bath

---



Dimensions: 5'0" x 9'0"  
Area: 45 sq. ft  
Counted as living area: Yes

Heated: Yes  
Finished: Yes  
Enclosed: Yes  
Contiguous: Yes  
Permitted: Yes  
Wet space: Yes  
Addition: No  
Conversion: No