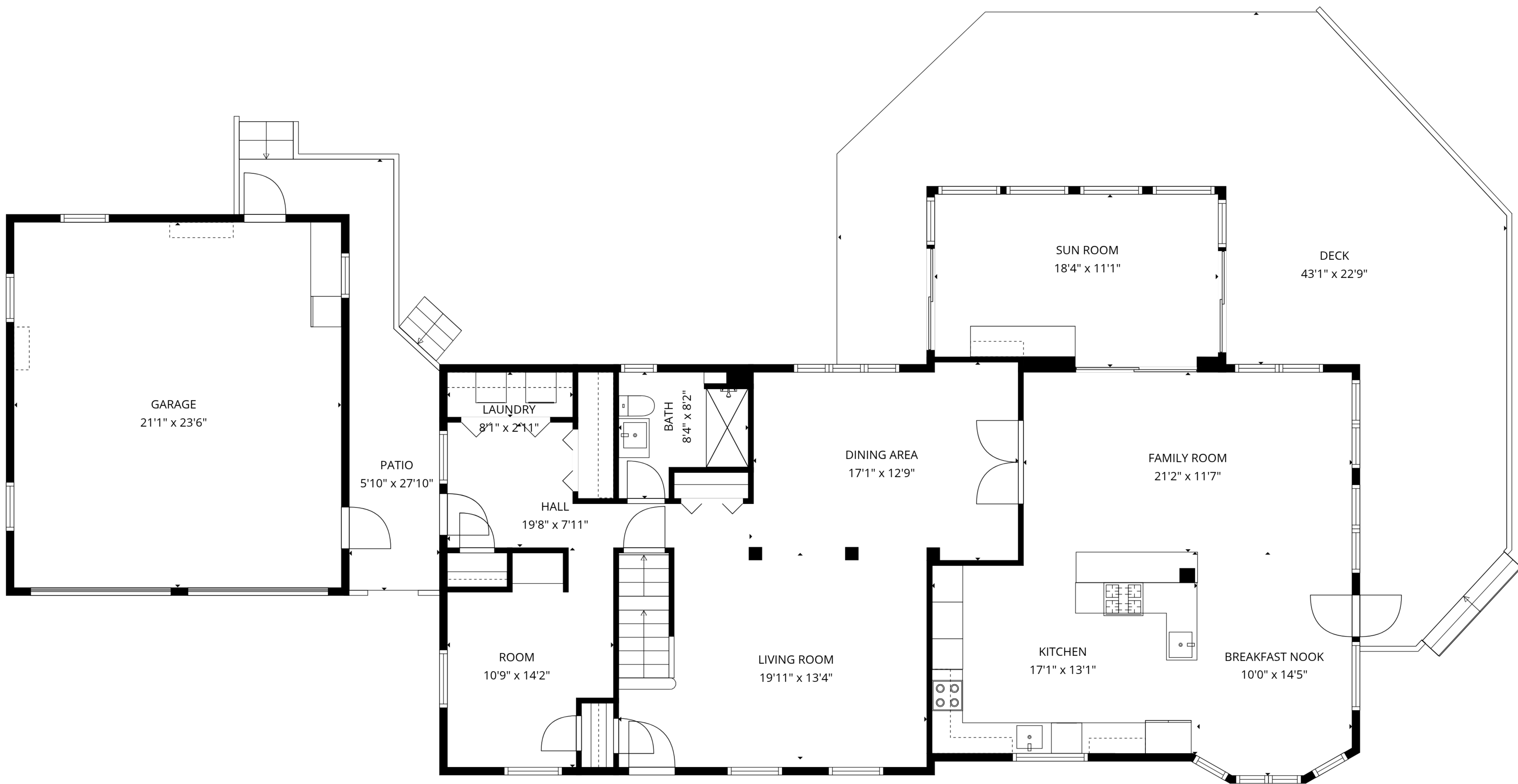


TOTAL: 2744 sq. ft

Basement: 0 sq. ft, 1st floor: 1683 sq. ft, 2nd floor: 1061 sq. ft
 EXCLUDED AREAS: BASEMENT: 1204 sq. ft, STORAGE: 260 sq. ft, GARAGE: 498 sq. ft,
 DECK: 802 sq. ft, PATIO: 159 sq. ft, OPEN TO BELOW: 101 sq. ft,
 LOW CEILING: 16 sq. ft, WALLS: 311 sq. ft





TOTAL: 2744 sq. ft

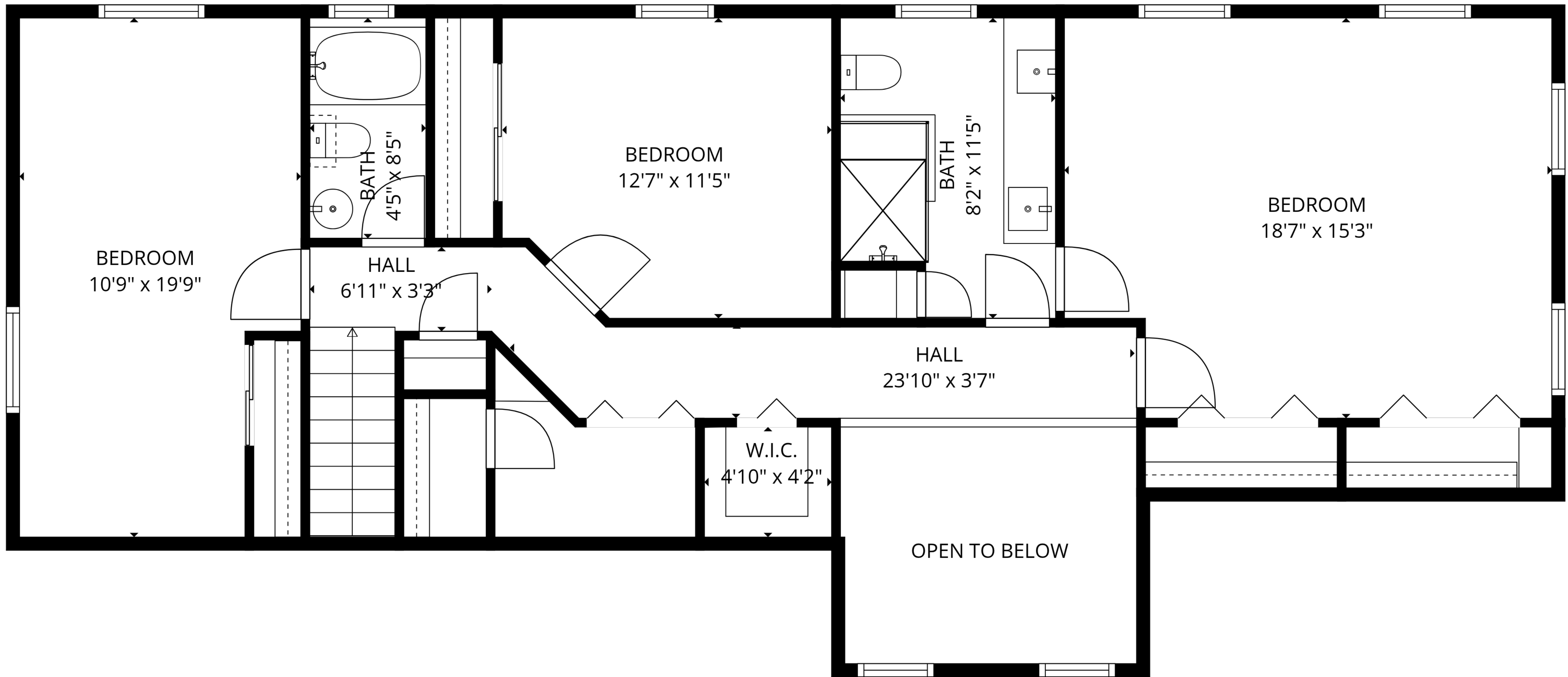
Basement: 0 sq. ft, 1st floor: 1683 sq. ft, 2nd floor: 1061 sq. ft

EXCLUDED AREAS: BASEMENT: 1204 sq. ft, STORAGE: 260 sq. ft, GARAGE: 498 sq. ft,

DECK: 802 sq. ft, PATIO: 159 sq. ft, OPEN TO BELOW: 101 sq. ft,

LOW CEILING: 16 sq. ft, WALLS: 311 sq. ft

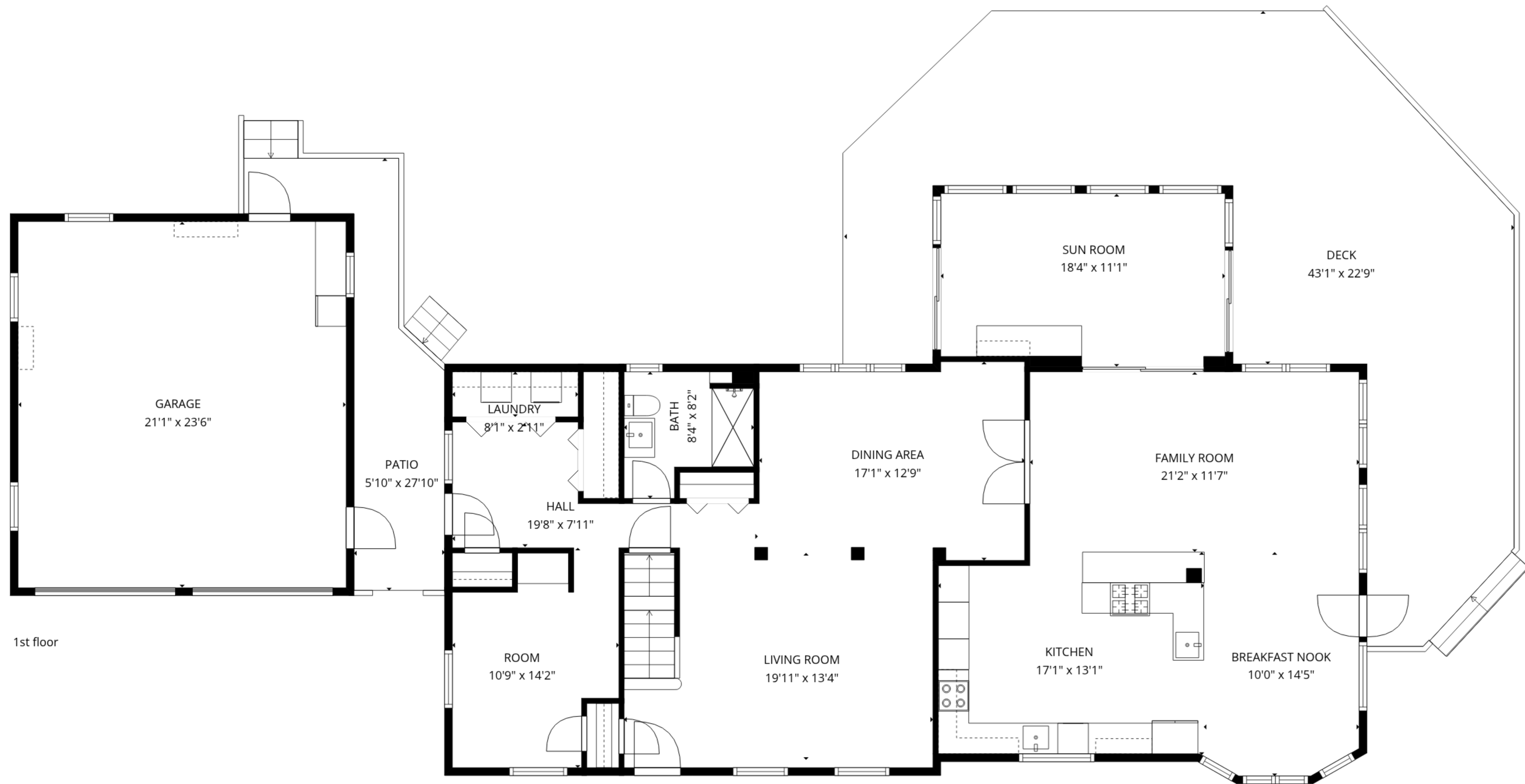




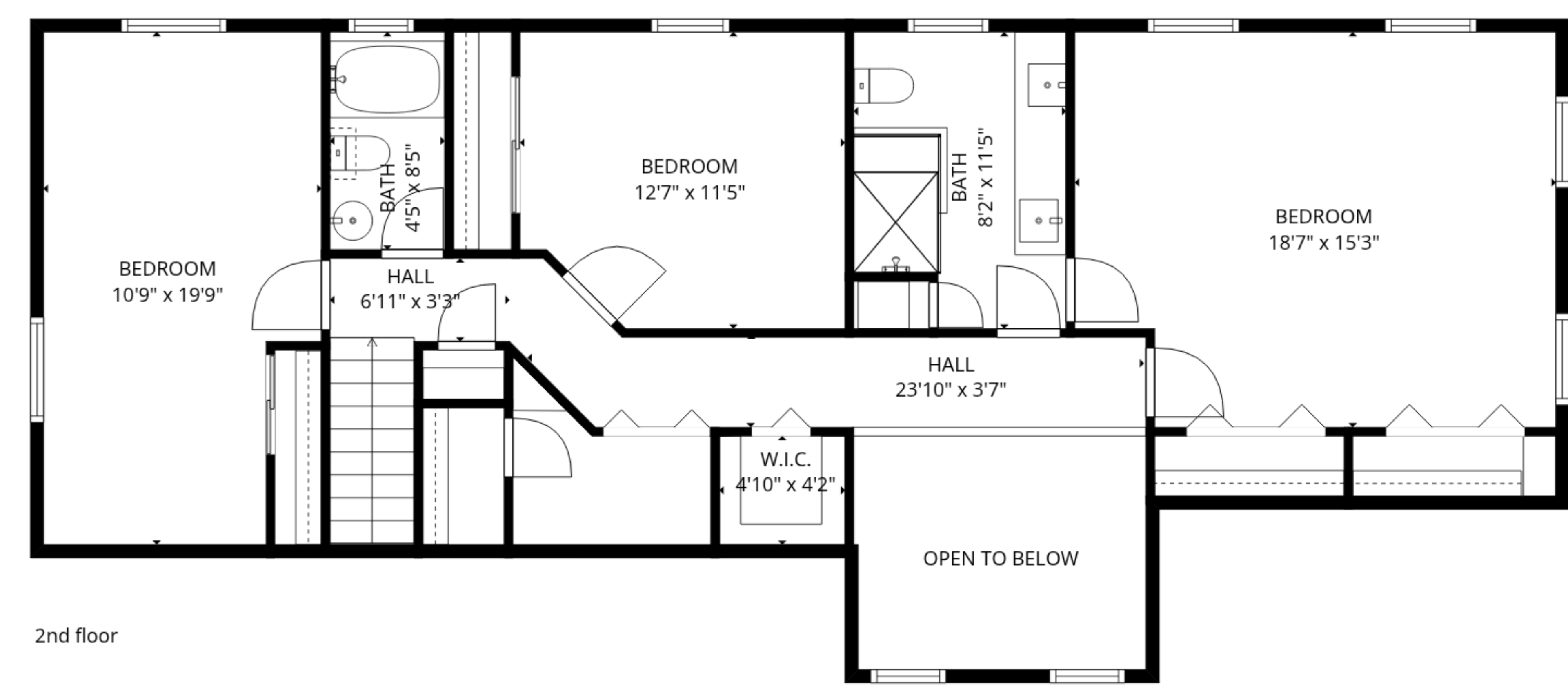
TOTAL: 2744 sq. ft

Basement: 0 sq. ft, 1st floor: 1683 sq. ft, 2nd floor: 1061 sq. ft
 EXCLUDED AREAS: BASEMENT: 1204 sq. ft, STORAGE: 260 sq. ft, GARAGE: 498 sq. ft,
 DECK: 802 sq. ft, PATIO: 159 sq. ft, OPEN TO BELOW: 101 sq. ft,
 LOW CEILING: 16 sq. ft, WALLS: 311 sq. ft





1st floor



2nd floor



Basement

TOTAL: 2744 sq. ft
 Basement: 0 sq. ft, 1st floor: 1683 sq. ft, 2nd floor: 1061 sq. ft
 EXCLUDED AREAS: BASEMENT: 1204 sq. ft, STORAGE: 260 sq. ft, GARAGE: 498 sq. ft,
 DECK: 802 sq. ft, PATIO: 159 sq. ft, OPEN TO BELOW: 101 sq. ft,
 LOW CEILING: 16 sq. ft, WALLS: 311 sq. ft



Floor Plans are provided by HouseSnappers.com. Measurements are deemed highly reliable but not guaranteed.