

BASEMENT
35'8" x 15'11"

RECREATION ROOM
38'11" x 30'4"

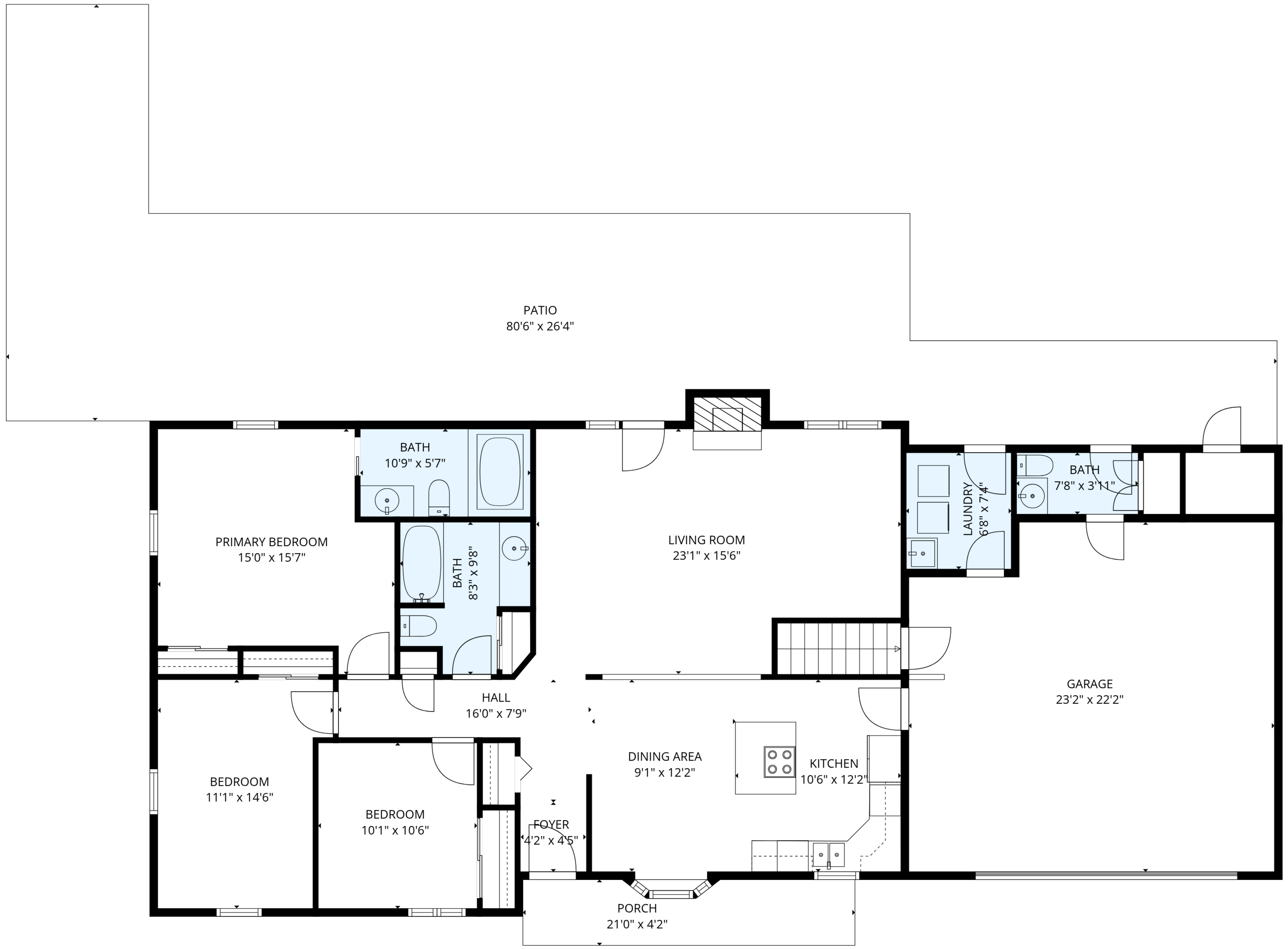
STORAGE
7'10" x 12'2"

TOTAL: 2304 sq. ft

Basement: 838 sq. ft, 1st floor: 1466 sq. ft

EXCLUDED AREAS: STORAGE: 95 sq. ft, BASEMENT: 440 sq. ft, GARAGE: 488 sq. ft,
PORCH: 82 sq. ft, PATIO: 1014 sq. ft, LOW CEILING: 25 sq. ft,
BAY WINDOW: 6 sq. ft, FIREPLACE: 11 sq. ft, WALLS: 201 sq. ft

MEASUREMENTS ARE DEEMED RELIABLE BUT ARE NOT GUARANTEED.



TOTAL: 2304 sq. ft

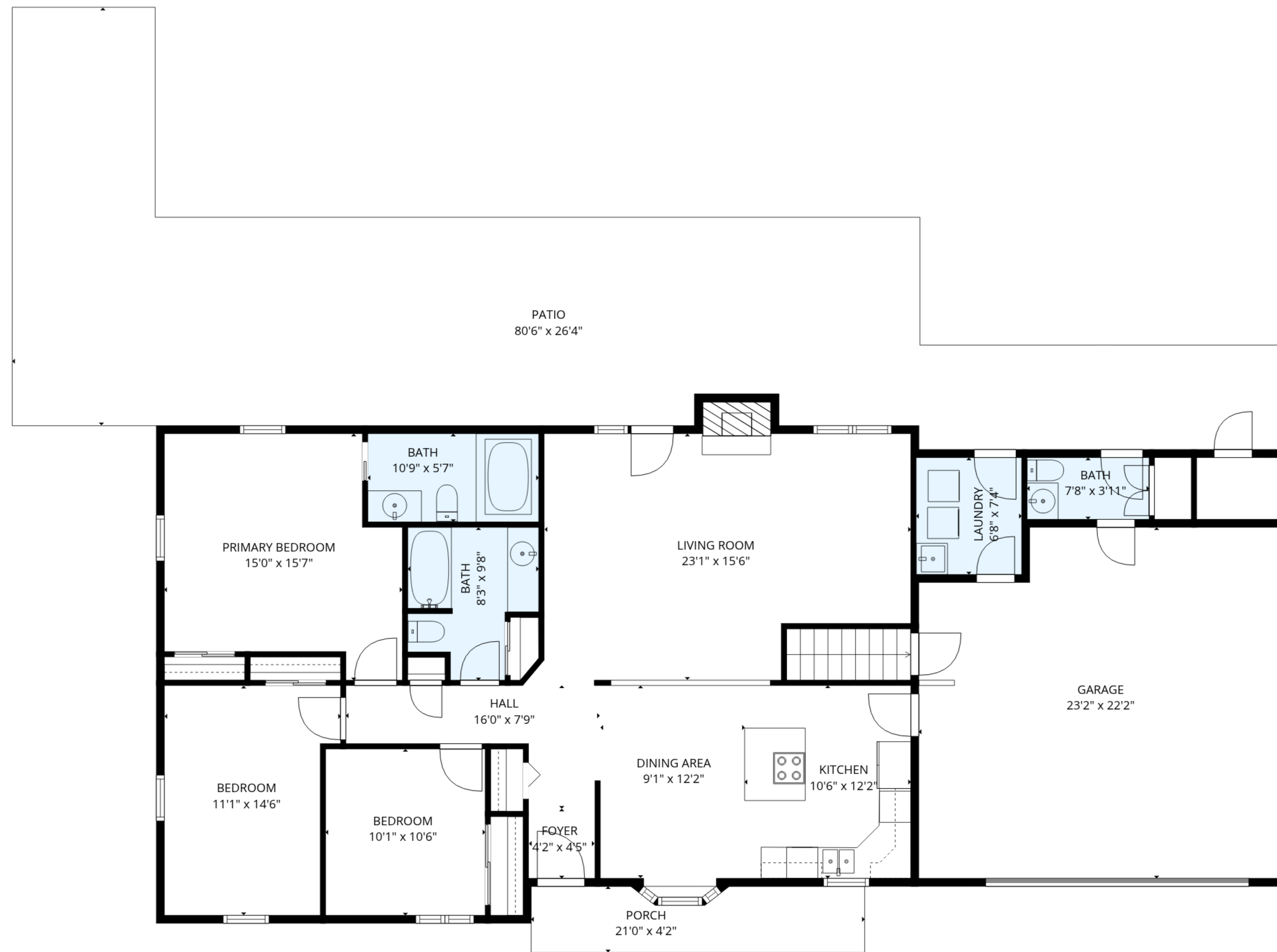
Basement: 838 sq. ft, 1st floor: 1466 sq. ft

EXCLUDED AREAS: STORAGE: 95 sq. ft, BASEMENT: 440 sq. ft, GARAGE: 488 sq. ft,

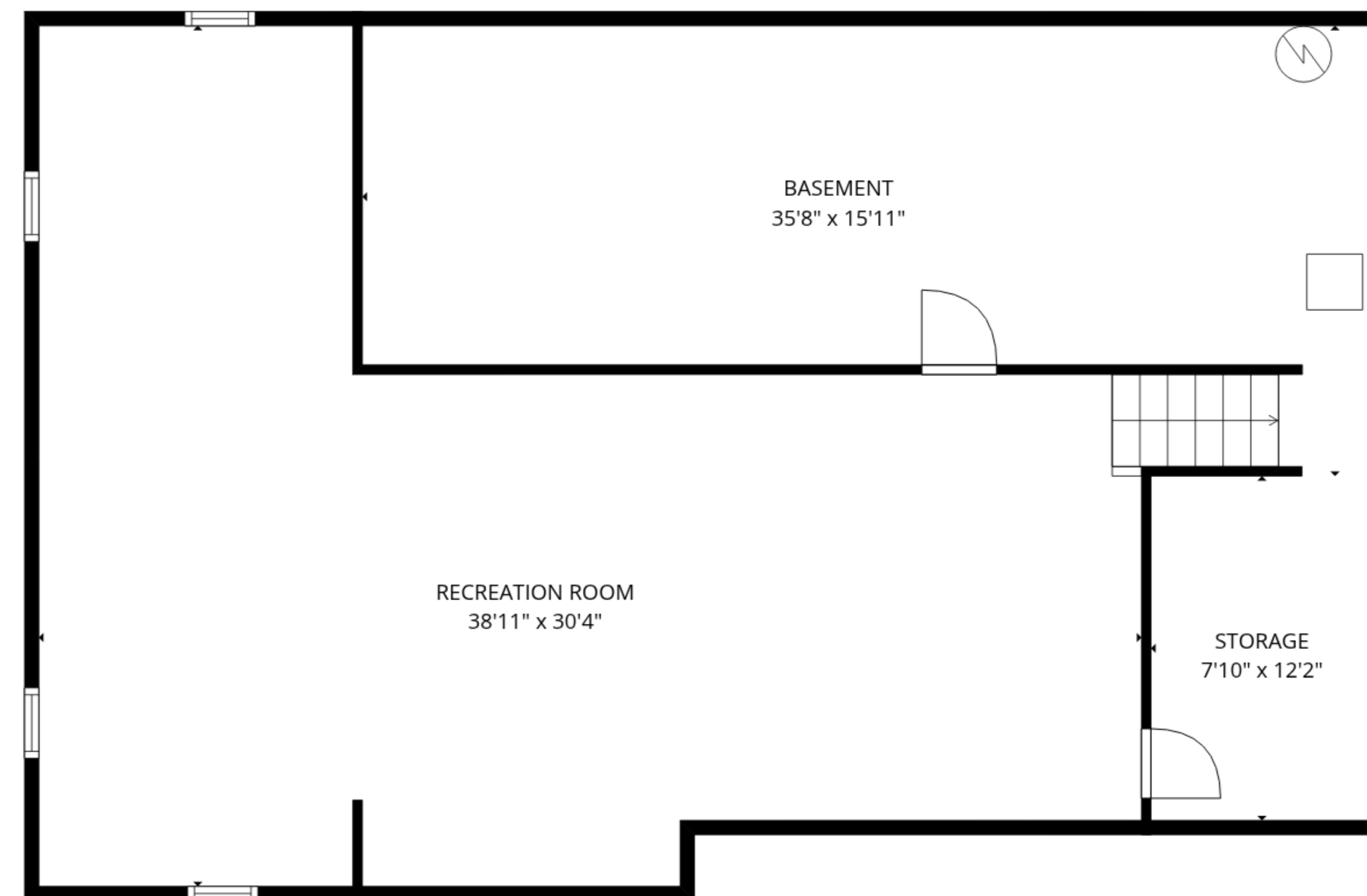
PORCH: 82 sq. ft, PATIO: 1014 sq. ft, LOW CEILING: 25 sq. ft,

BAY WINDOW: 6 sq. ft, FIREPLACE: 11 sq. ft, WALLS: 201 sq. ft

MEASUREMENTS ARE DEEMED RELIABLE BUT ARE NOT GUARANTEED.



1st floor



Basement

TOTAL: 2304 sq. ft

Basement: 838 sq. ft, 1st floor: 1466 sq. ft

EXCLUDED AREAS: STORAGE: 95 sq. ft, BASEMENT: 440 sq. ft, GARAGE: 488 sq. ft,

PORCH: 82 sq. ft, PATIO: 1014 sq. ft, LOW CEILING: 25 sq. ft,

BAY WINDOW: 6 sq. ft, FIREPLACE: 11 sq. ft, WALLS: 201 sq. ft

MEASUREMENTS ARE DEEMED RELIABLE BUT ARE NOT GUARANTEED.