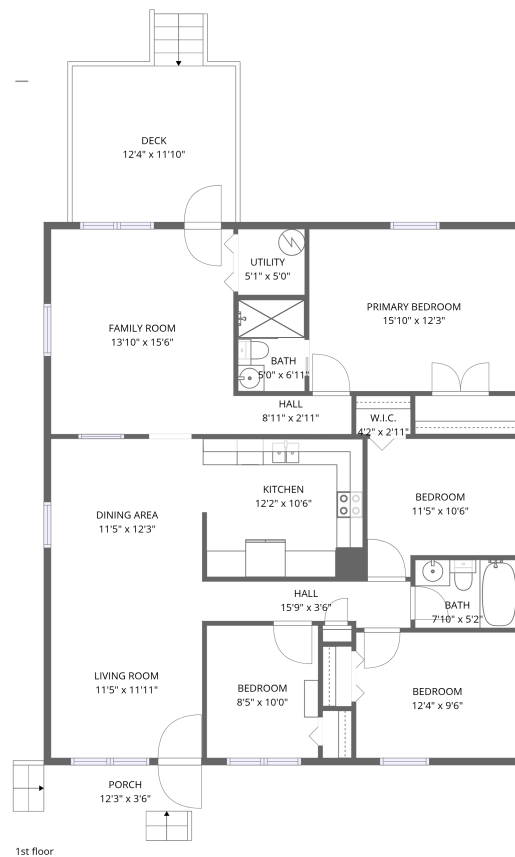


Home data report

**1820 Oakwood Avenue Northeast, Northeast
Huntsville, Huntsville, Madison County, Alabama,**



Total Area: 1495 sq. ft

1st Floor: 1495 sq. ft

Excluded: Deck 160 sq. ft, Porch 43 sq. ft

Property summary

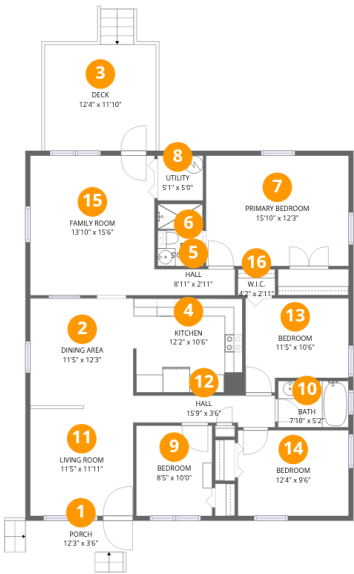
 **1** Floors

 **4** Bedrooms

 **2** Bathrooms

Scan captured on Wed, 17 Dec 2025 14:45:23 GMT

FLOOR PLAN CREATED BY CUBICASA APP. MEASUREMENTS DEEMED HIGHLY RELIABLE BUT NOT GUARANTEED.



Room dimensions

Floor 1 Total:1495sqft Excluded: 203sqft

#		Dimensions	sqft	Counted as living area
1	Porch	12'3" x 3'6"	43 sq. ft	No
2	Dining Area	11'5" x 12'3"	140 sq. ft	Yes
3	Deck	12'4" x 11'10"	160 sq. ft	No
4	Kitchen	12'2" x 10'6"	125 sq. ft	Yes
5	Hall	8'11" x 2'11"	26 sq. ft	Yes
6	Bath	5'0" x 6'11"	35 sq. ft	Yes
7	Primary Bedroom	15'10" x 12'3"	194 sq. ft	Yes
8	Utility	5'1" x 5'0"	25 sq. ft	Yes
9	Bedroom	8'5" x 10'0"	84 sq. ft	Yes
10	Bath	7'10" x 5'2"	40 sq. ft	Yes
11	Living Room	11'5" x 11'11"	136 sq. ft	Yes

Home data report

**1820 Oakwood Avenue Northeast, Northeast
Huntsville, Huntsville, Madison County, Alabama,**



#		Dimensions	sqft	Counted as living area
12	Hall	15'9" x 3'6"	49 sq. ft	Yes
13	Bedroom	11'5" x 10'6"	106 sq. ft	Yes
14	Bedroom	12'4" x 9'6"	117 sq. ft	Yes
15	Family Room	13'10" x 15'6"	214 sq. ft	Yes
16	W.I.C.	4'2" x 2'11"	12 sq. ft	Yes



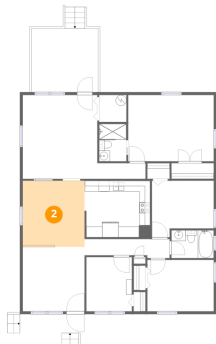
1 Floor 1 - Porch



Dimensions: 12'3" x 3'6"
Area: 43 sq. ft
Counted as living area: No

Heated: No
Finished: No
Enclosed: No
Contiguous: Yes
Permitted: Yes
Wet space: No
Addition: No
Conversion: No

2 Floor 1 - Dining Area



Dimensions: 11'5" x 12'3"
Area: 140 sq. ft
Counted as living area: Yes

Heated: Yes
Finished: Yes
Enclosed: Yes
Contiguous: Yes
Permitted: Yes
Wet space: No
Addition: No
Conversion: No



3 Floor 1 - Deck



Dimensions: 12'4" x 11'10"

Area: 160 sq. ft

Counted as living area: No

Heated: No

Finished: No

Enclosed: No

Contiguous: Yes

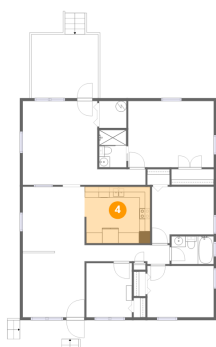
Permitted: Yes

Wet space: No

Addition: No

Conversion: No

4 Floor 1 - Kitchen



Dimensions: 12'2" x 10'6"

Area: 125 sq. ft

Counted as living area: Yes

Heated: Yes

Finished: Yes

Enclosed: Yes

Contiguous: Yes

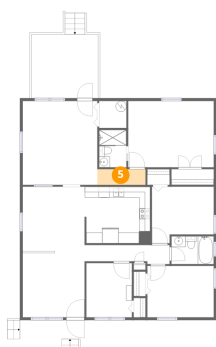
Permitted: Yes

Wet space: No

Addition: No

Conversion: No

5 Floor 1 - Hall



Dimensions: 8'11" x 2'11"

Area: 26 sq. ft

Counted as living area: Yes

Heated: Yes

Finished: Yes

Enclosed: Yes

Contiguous: Yes

Permitted: Yes

Wet space: No

Addition: No

Conversion: No



6 Floor 1 - Bath



Dimensions: 5'0" x 6'11"
Area: 35 sq. ft
Counted as living area: Yes

Heated: Yes
Finished: Yes
Enclosed: Yes
Contiguous: Yes
Permitted: Yes
Wet space: Yes
Addition: No
Conversion: No

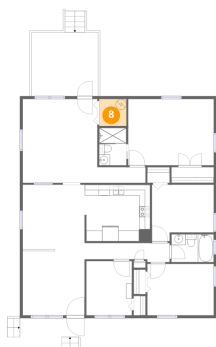
7 Floor 1 - Primary Bedroom



Dimensions: 15'10" x 12'3"
Area: 194 sq. ft
Counted as living area: Yes

Heated: Yes
Finished: Yes
Enclosed: Yes
Contiguous: Yes
Permitted: Yes
Wet space: No
Addition: No
Conversion: No

8 Floor 1 - Utility

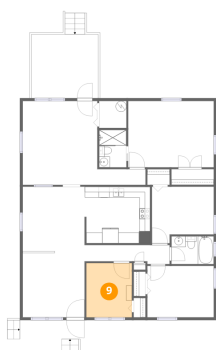


Dimensions: 5'1" x 5'0"
Area: 25 sq. ft
Counted as living area: Yes

Heated: Yes
Finished: Yes
Enclosed: Yes
Contiguous: Yes
Permitted: Yes
Wet space: No
Addition: No
Conversion: No



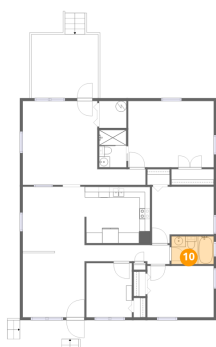
9 Floor 1 - Bedroom



Dimensions: 8'5" x 10'0"
Area: 84 sq. ft
Counted as living area: Yes

Heated: Yes
Finished: Yes
Enclosed: Yes
Contiguous: Yes
Permitted: Yes
Wet space: No
Addition: No
Conversion: No

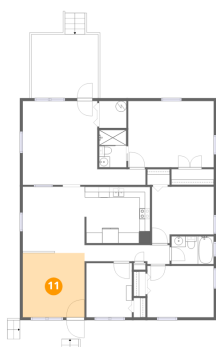
10 Floor 1 - Bath



Dimensions: 7'10" x 5'2"
Area: 40 sq. ft
Counted as living area: Yes

Heated: Yes
Finished: Yes
Enclosed: Yes
Contiguous: Yes
Permitted: Yes
Wet space: Yes
Addition: No
Conversion: No

11 Floor 1 - Living Room

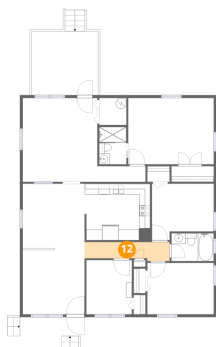


Dimensions: 11'5" x 11'11"
Area: 136 sq. ft
Counted as living area: Yes

Heated: Yes
Finished: Yes
Enclosed: Yes
Contiguous: Yes
Permitted: Yes
Wet space: No
Addition: No
Conversion: No



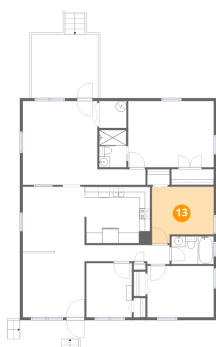
12 Floor 1 - Hall



Dimensions: 15'9" x 3'6"
Area: 49 sq. ft
Counted as living area: Yes

Heated: Yes
Finished: Yes
Enclosed: Yes
Contiguous: Yes
Permitted: Yes
Wet space: No
Addition: No
Conversion: No

13 Floor 1 - Bedroom



Dimensions: 11'5" x 10'6"
Area: 106 sq. ft
Counted as living area: Yes

Heated: Yes
Finished: Yes
Enclosed: Yes
Contiguous: Yes
Permitted: Yes
Wet space: No
Addition: No
Conversion: No

14 Floor 1 - Bedroom

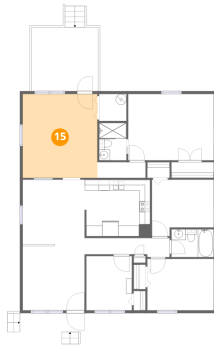


Dimensions: 12'4" x 9'6"
Area: 117 sq. ft
Counted as living area: Yes

Heated: Yes
Finished: Yes
Enclosed: Yes
Contiguous: Yes
Permitted: Yes
Wet space: No
Addition: No
Conversion: No



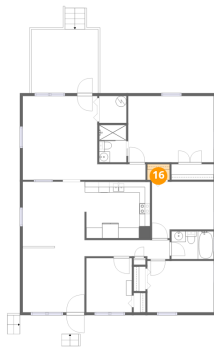
15 Floor 1 - Family Room



Dimensions: 13'10" x 15'6"
Area: 214 sq. ft
Counted as living area: Yes

Heated: Yes
Finished: Yes
Enclosed: Yes
Contiguous: Yes
Permitted: Yes
Wet space: No
Addition: No
Conversion: No

16 Floor 1 - W.I.C.



Dimensions: 4'2" x 2'11"
Area: 12 sq. ft
Counted as living area: Yes

Heated: Yes
Finished: Yes
Enclosed: Yes
Contiguous: Yes
Permitted: Yes
Wet space: No
Addition: No
Conversion: No