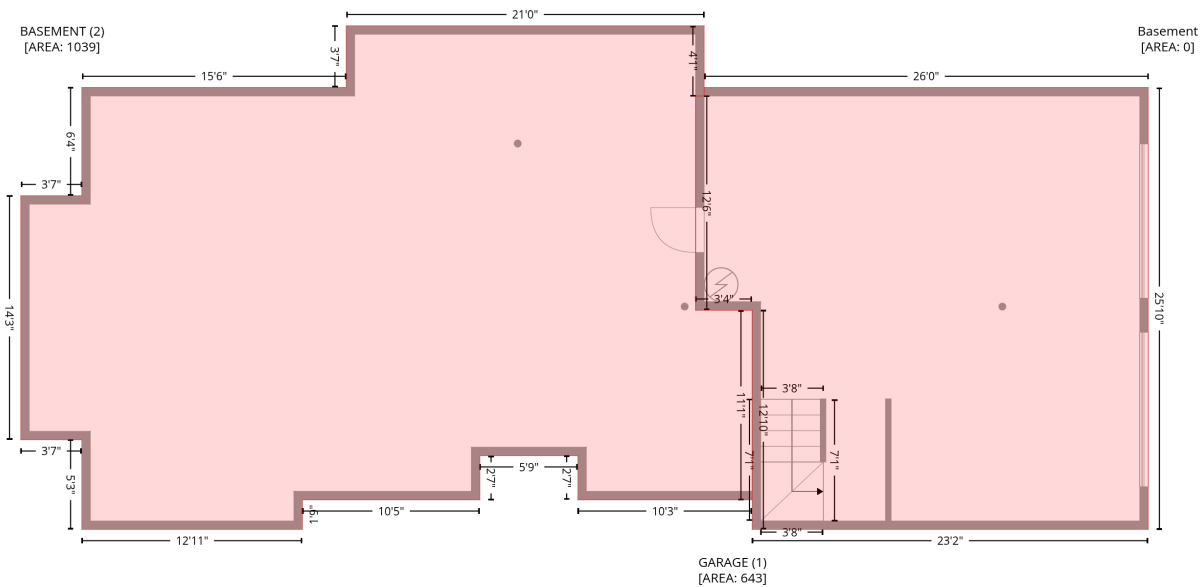


2105 Morning Star Lane, Kimball Acres, Winston-Salem, Forsyth County, North Carolina, United States, 27107

Gross Living Area: 2439 sq. ft

Level 1 - Below Grade



| Space | Area (sq. ft) | Calculation |
|-------------------------------|---------------|---|
| GARAGE (Non-living area) | 643 | $-\left((598.2 + 598.2) * (273.7 - 584.1) + (598.2 + 319.8) * (584.1 - 584.1) + (319.8 + 319.8) * (584.1 - 430.1) + (319.8 + 280) * (430.1 - 430.1) + (280 + 280) * (430.1 - 279.7) + (280 + 286) * (279.7 - 279.7) + (286 + 286) * (279.7 - 273.7) + (286 + 598.2) * (273.7 - 273.7)\right) * 0.5 * 0.00694$ |
| BASEMENT (Non-living area) | 1039 | $-\left((286 + 286) * (230.4 - 279.7) + (286 + 280) * (279.7 - 279.7) + (280 + 280) * (279.7 - 430.1) + (280 + 319.8) * (430.1 - 430.1) + (319.8 + 319.8) * (430.1 - 563.3) + (319.8 + 197.3) * (563.3 - 563.3) + (197.3 + 197.3) * (563.3 - 532.3) + (197.3 + 128.4) * (532.3 - 532.3) + (128.4 + 128.4) * (532.3 - 563.3) + (128.4 + 3.6) * (563.3 - 563.3) + (3.6 + 3.6) * (563.3 - 584.1) + (3.6 + -151.5) * (584.1 - 584.1) + (-151.5 + -151.5) * (584.1 - 521.1) + (-151.5 + -194.4) * (521.1 - 521.1) + (-194.4 + -194.4) * (521.1 - 349.7) + (-194.4 + -151.5) * (349.7 - 349.7) + (-151.5 + -151.5) * (349.7 - 273.7) + (-151.5 + 34.4) * (273.7 - 273.7) + (34.4 + 34.4) * (273.7 - 230.4) + (34.4 + 286) * (230.4 - 230.4)\right) * 0.5 * 0.00694$ |

2105 Morning Star Lane, Kimball Acres, Winston-Salem, Forsyth County, North Carolina, United States, 27107

Gross Living Area: 2439 sq. ft

Level 3

| Space | Area (sq. ft) | Calculation <small>Coordinate Polygon Area Algorithm using inches</small> |
|------------------------------------|---------------|---|
| OPEN TO BELOW (Non-living area) | 261 | $-\frac{1}{2}((286 + 286) * (230.4 - 319.4) + (286 + 280) * (319.4 - 325.4) + (280 + 280) * (325.4 - 381.1) + (280 + 34.4) * (381.1 - 381.1) + (34.4 + 34.4) * (381.1 - 230.4) + (34.4 + 286) * (230.4 - 230.4)) * 0.5 * 0.00694$ |