

Home data report

422 Main Street, New Castle, Craig County, Virginia, United States, 24127



Total Area: 2676 sq. ft

1st Floor: 451 sq. ft, 2nd Floor: 1720 sq. ft, 3rd Floor: 505 sq. ft

Excluded: Storage 882 sq. ft, Fireplace 25 sq. ft, Carport 594 sq. ft, Deck 199 sq. ft, Attic 568 sq. ft, Walls: 255 sq. ft

Property summary



3 Floors



3 Bedrooms



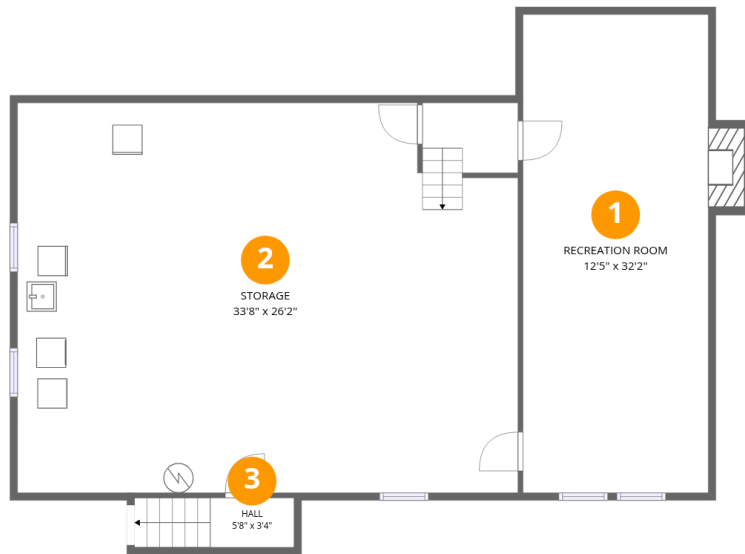
2 Bathrooms



2 Half baths

Home data report

422 Main Street, New Castle, Craig County, Virginia, United States, 24127



Room dimensions

Floor 1

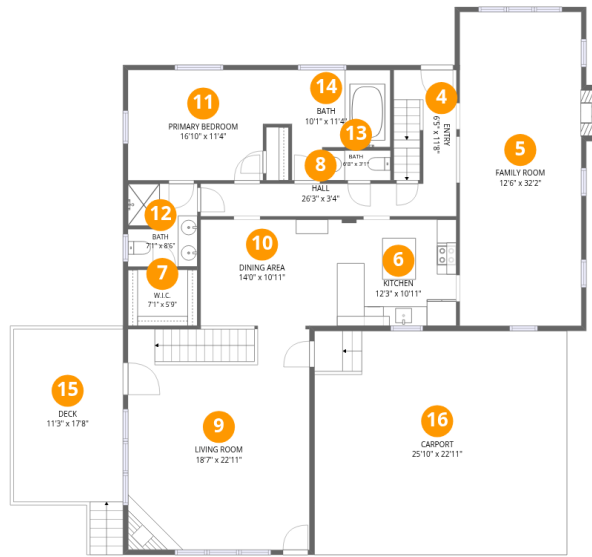
Total:451sqft

Excluded: 898sqft

#		Dimensions	sqft	Counted as living area
1	Recreation Room	12'5" x 32'2"	414 sq. ft	Yes
2	Storage	33'8" x 26'2"	879 sq. ft	No
3	Hall	5'8" x 3'4"	36 sq. ft	Yes

Home data report

422 Main Street, New Castle, Craig County, Virginia, United States, 24127



Room dimensions

Floor 2

Total:1720sqft

Excluded: 802sqft

#		Dimensions	sqft	Counted as living area
4	Entry	6'5" x 11'8"	74 sq. ft	Yes
5	Family Room	12'6" x 32'2"	408 sq. ft	Yes
6	Kitchen	12'3" x 10'11"	133 sq. ft	Yes
7	W.I.C.	7'1" x 5'9"	41 sq. ft	Yes
8	Hall	26'3" x 3'4"	88 sq. ft	Yes
9	Living Room	18'7" x 22'11"	424 sq. ft	Yes
10	Dining Area	14'0" x 10'11"	152 sq. ft	Yes
11	Primary Bedroom	16'10" x 11'4"	173 sq. ft	Yes
12	Bath	7'1" x 8'6"	59 sq. ft	Yes
13	Bath	6'8" x 3'1"	20 sq. ft	Yes
14	Bath	10'1" x 11'4"	91 sq. ft	Yes

Scan captured on Fri, 29 May 2026 21:18:29 GMT

SIZES AND DIMENSIONS ARE APPROXIMATE, ACTUAL MAY VARY.

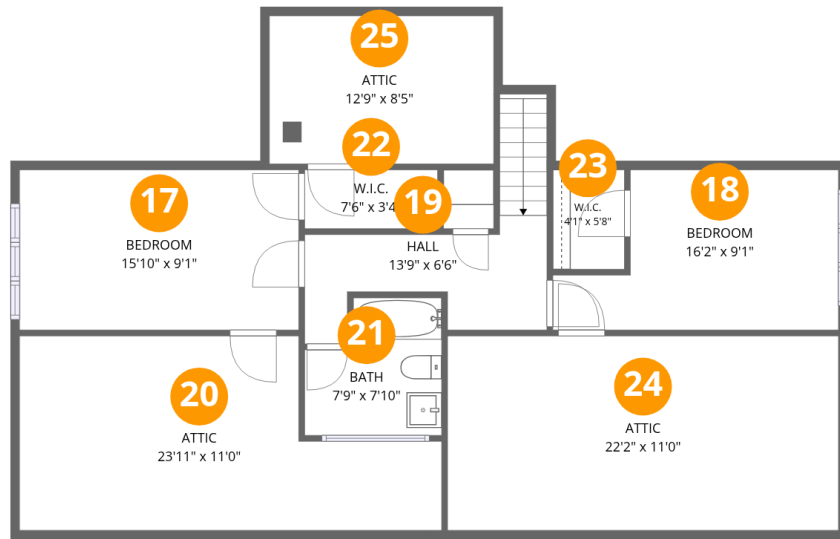
Home data report

422 Main Street, New Castle, Craig County, Virginia, United States, 24127

#		Dimensions	sqft	Counted as living area
15	Deck	11'3" x 17'8"	199 sq. ft	No
16	Carport	25'10" x 22'11"	594 sq. ft	No

Home data report

422 Main Street, New Castle, Craig County, Virginia, United States, 24127



Room dimensions

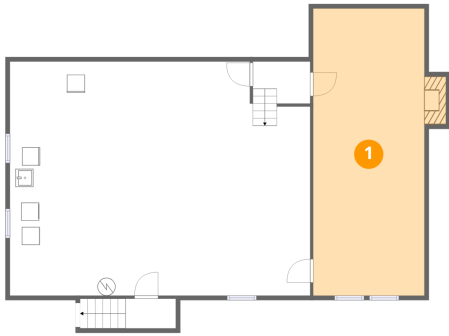
Floor 3

Total:505sqft

Excluded: 568sqft

#		Dimensions	sqft	Counted as living area
17	Bedroom	15'10" x 9'1"	144 sq. ft	Yes
18	Bedroom	16'2" x 9'1"	121 sq. ft	Yes
19	Hall	13'9" x 6'6"	85 sq. ft	Yes
20	Attic	23'11" x 11'0"	215 sq. ft	No
21	Bath	7'9" x 7'10"	52 sq. ft	Yes
22	W.I.C.	7'6" x 3'4"	25 sq. ft	Yes
23	W.I.C.	4'1" x 5'8"	23 sq. ft	Yes
24	Attic	22'2" x 11'0"	244 sq. ft	No
25	Attic	12'9" x 8'5"	107 sq. ft	No

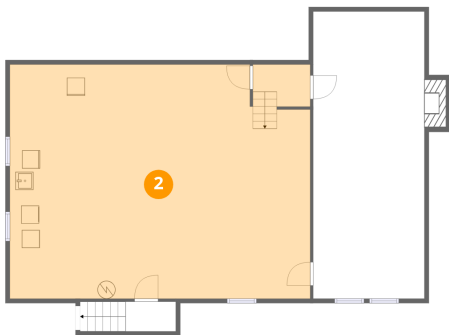
1 Floor 1 - Recreation Room



Dimensions: 12'5" x 32'2"
Area: 414 sq. ft
Counted as living area: No

Heated: Yes
Finished: Yes
Enclosed: Yes
Contiguous: No
Permitted: Yes
Wet space: No
Addition: No
Conversion: No

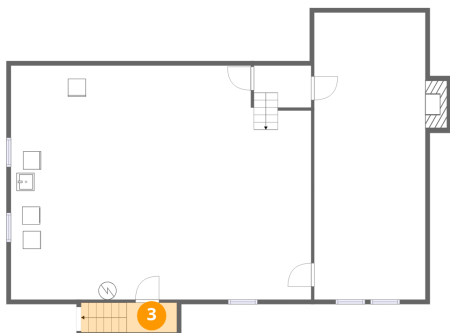
2 Floor 1 - Storage



Dimensions: 33'8" x 26'2"
Area: 879 sq. ft
Counted as living area: No

Heated: No
Finished: No
Enclosed: No
Contiguous: Yes
Permitted: Yes
Wet space: No
Addition: No
Conversion: No

3 Floor 1 - Hall



Dimensions: 5'8" x 3'4"
Area: 36 sq. ft
Counted as living area: Yes

Heated: Yes
Finished: Yes
Enclosed: Yes
Contiguous: Yes
Permitted: Yes
Wet space: No
Addition: No
Conversion: No

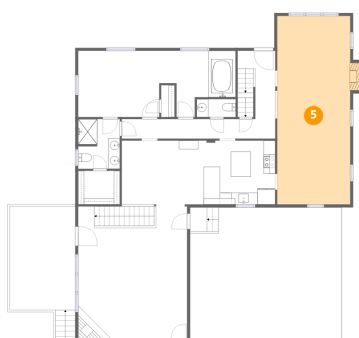
4 Floor 2 - Entry



Dimensions: 6'5" x 11'8"
Area: 74 sq. ft
Counted as living area: Yes

Heated: Yes
Finished: Yes
Enclosed: Yes
Contiguous: Yes
Permitted: Yes
Wet space: No
Addition: No
Conversion: No

5 Floor 2 - Family Room



Dimensions: 12'6" x 32'2"
Area: 408 sq. ft
Counted as living area: Yes

Heated: Yes
Finished: Yes
Enclosed: Yes
Contiguous: Yes
Permitted: Yes
Wet space: No
Addition: No
Conversion: No

6 Floor 2 - Kitchen



Dimensions: 12'3" x 10'11"
Area: 133 sq. ft
Counted as living area: Yes

Heated: Yes
Finished: Yes
Enclosed: Yes
Contiguous: Yes
Permitted: Yes
Wet space: No
Addition: No
Conversion: No

7 Floor 2 - W.I.C.



Dimensions: 7'1" x 5'9"
Area: 41 sq. ft
Counted as living area: Yes

Heated: Yes
Finished: Yes
Enclosed: Yes
Contiguous: Yes
Permitted: Yes
Wet space: No
Addition: No
Conversion: No

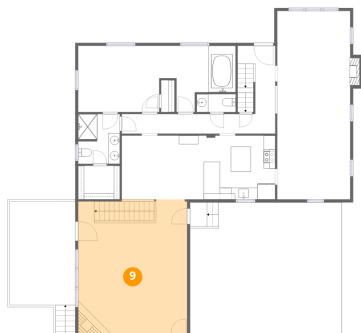
8 Floor 2 - Hall



Dimensions: 26'3" x 3'4"
Area: 88 sq. ft
Counted as living area: Yes

Heated: Yes
Finished: Yes
Enclosed: Yes
Contiguous: Yes
Permitted: Yes
Wet space: No
Addition: No
Conversion: No

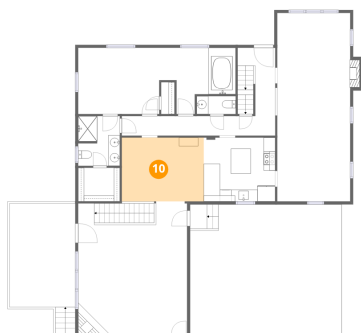
9 Floor 2 - Living Room



Dimensions: 18'7" x 22'11"
Area: 424 sq. ft
Counted as living area: Yes

Heated: Yes
Finished: Yes
Enclosed: Yes
Contiguous: Yes
Permitted: Yes
Wet space: No
Addition: No
Conversion: No

10 Floor 2 - Dining Area



Dimensions: 14'0" x 10'11"
Area: 152 sq. ft
Counted as living area: Yes

Heated: Yes
Finished: Yes
Enclosed: Yes
Contiguous: Yes
Permitted: Yes
Wet space: No
Addition: No
Conversion: No

11 Floor 2 - Primary Bedroom



Dimensions: 16'10" x 11'4"
Area: 173 sq. ft
Counted as living area: Yes

Heated: Yes
Finished: Yes
Enclosed: Yes
Contiguous: Yes
Permitted: Yes
Wet space: No
Addition: No
Conversion: No

12 Floor 2 - Bath



Dimensions: 7'1" x 8'6"
Area: 59 sq. ft
Counted as living area: Yes

Heated: Yes
Finished: Yes
Enclosed: Yes
Contiguous: Yes
Permitted: Yes
Wet space: Yes
Addition: No
Conversion: No

13 Floor 2 - Bath



Dimensions: 6'8" x 3'1"
Area: 20 sq. ft
Counted as living area: Yes

Heated: Yes
Finished: Yes
Enclosed: Yes
Contiguous: Yes
Permitted: Yes
Wet space: Yes
Addition: No
Conversion: No

14 Floor 2 - Bath



Dimensions: 10'1" x 11'4"
Area: 91 sq. ft
Counted as living area: Yes

Heated: Yes
Finished: Yes
Enclosed: Yes
Contiguous: Yes
Permitted: Yes
Wet space: Yes
Addition: No
Conversion: No

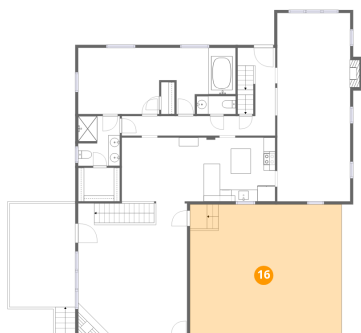
15 Floor 2 - Deck



Dimensions: 11'3" x 17'8"
Area: 199 sq. ft
Counted as living area: No

Heated: No
Finished: No
Enclosed: No
Contiguous: Yes
Permitted: Yes
Wet space: No
Addition: No
Conversion: No

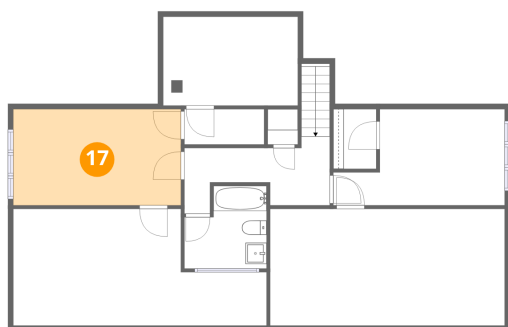
16 Floor 2 - Carport



Dimensions: 25'10" x 22'11"
Area: 594 sq. ft
Counted as living area: No

Heated: No
Finished: Yes
Enclosed: No
Contiguous: Yes
Permitted: Yes
Wet space: No
Addition: No
Conversion: No

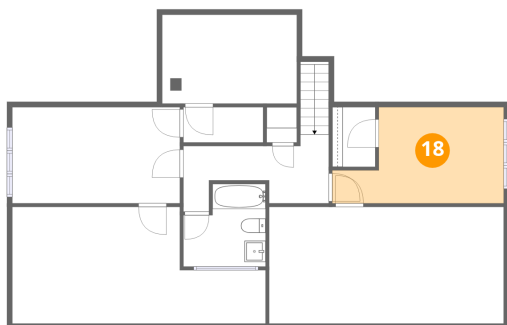
17 Floor 3 - Bedroom



Dimensions: 15'10" x 9'1"
Area: 144 sq. ft
Counted as living area: Yes

Heated: Yes
Finished: Yes
Enclosed: Yes
Contiguous: Yes
Permitted: Yes
Wet space: No
Addition: No
Conversion: No

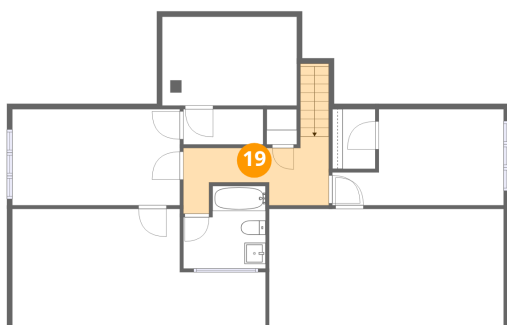
18 Floor 3 - Bedroom



Dimensions: 16'2" x 9'1"
Area: 121 sq. ft
Counted as living area: Yes

Heated: Yes
Finished: Yes
Enclosed: Yes
Contiguous: Yes
Permitted: Yes
Wet space: No
Addition: No
Conversion: No

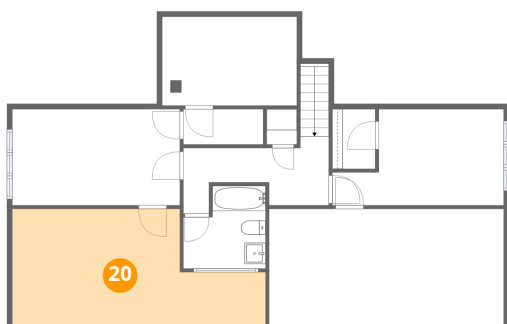
19 Floor 3 - Hall



Dimensions: 13'9" x 6'6"
Area: 85 sq. ft
Counted as living area: Yes

Heated: Yes
Finished: Yes
Enclosed: Yes
Contiguous: Yes
Permitted: Yes
Wet space: No
Addition: No
Conversion: No

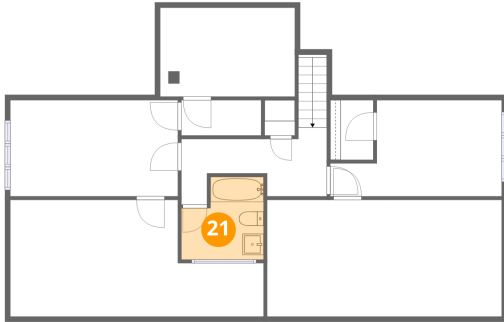
20 Floor 3 - Attic



Dimensions: 23'11" x 11'0"
Area: 215 sq. ft
Counted as living area: No

Heated: No
Finished: No
Enclosed: Yes
Contiguous: Yes
Permitted: Yes
Wet space: No
Addition: No
Conversion: No

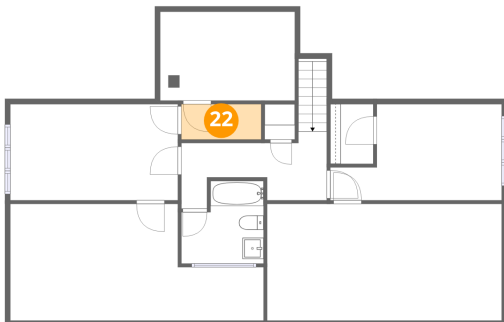
21 Floor 3 - Bath



Dimensions: 7'9" x 7'10"
Area: 52 sq. ft
Counted as living area: Yes

Heated: Yes
Finished: Yes
Enclosed: Yes
Contiguous: Yes
Permitted: Yes
Wet space: Yes
Addition: No
Conversion: No

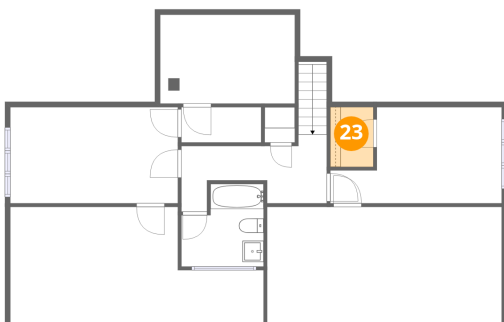
22 Floor 3 - W.I.C.



Dimensions: 7'6" x 3'4"
Area: 25 sq. ft
Counted as living area: Yes

Heated: Yes
Finished: Yes
Enclosed: Yes
Contiguous: Yes
Permitted: Yes
Wet space: No
Addition: No
Conversion: No

23 Floor 3 - W.I.C.

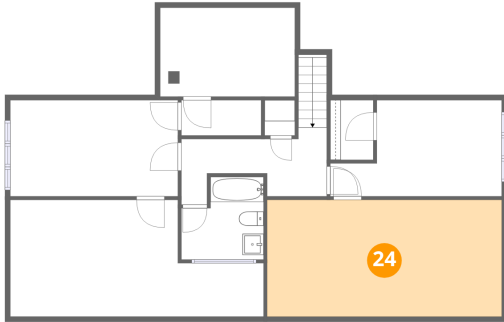


Dimensions: 4'1" x 5'8"
Area: 23 sq. ft
Counted as living area: Yes

Heated: Yes
Finished: Yes
Enclosed: Yes
Contiguous: Yes
Permitted: Yes
Wet space: No
Addition: No
Conversion: No

422 Main Street, New Castle, Craig County, Virginia, United States, 24127

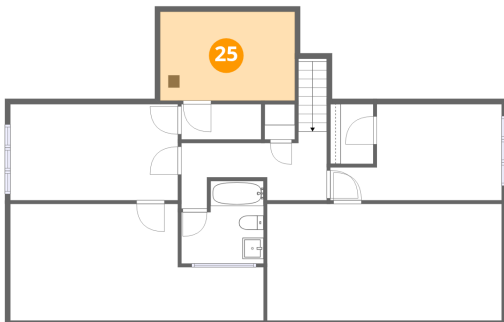
24 Floor 3 - Attic



Dimensions: 22'2" x 11'0"
Area: 244 sq. ft
Counted as living area: No

Heated: No
Finished: No
Enclosed: Yes
Contiguous: Yes
Permitted: Yes
Wet space: No
Addition: No
Conversion: No

25 Floor 3 - Attic



Dimensions: 12'9" x 8'5"
Area: 107 sq. ft
Counted as living area: No

Heated: No
Finished: No
Enclosed: Yes
Contiguous: Yes
Permitted: Yes
Wet space: No
Addition: No
Conversion: No