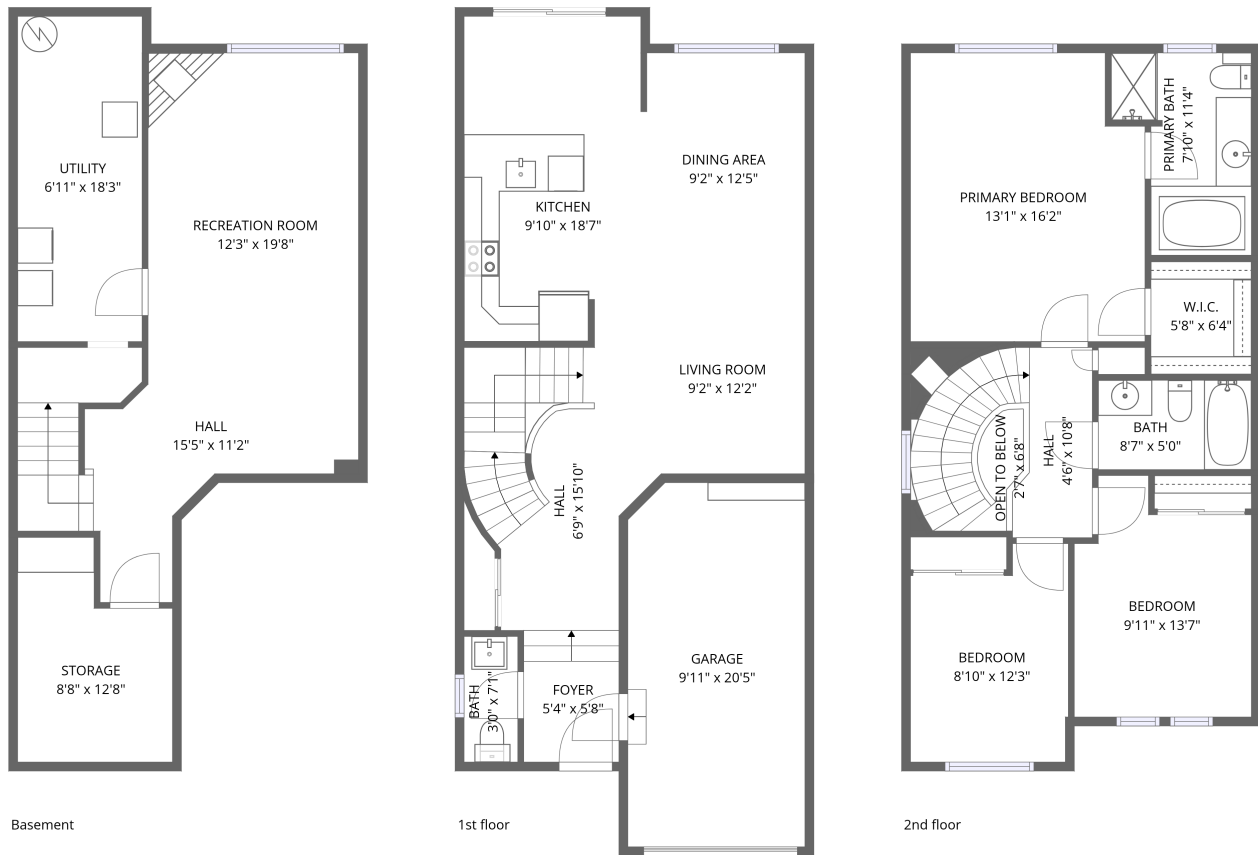


Home data report

22 Cloutier Street, Stonebridge, Nepean, Ontario, Canada, K2J 4T5




Total Area: 1703 sq. ft

Basement: 366 sq. ft, 1st Floor: 615 sq. ft, 2nd Floor: 722 sq. ft

Excluded: Storage 92 sq. ft, Utility 130 sq. ft, Undefined 21 sq. ft, Garage 201 sq. ft, Open to below 13 sq. ft, Walls: 159 sq. ft

Property summary

 **3** Floors

 **3** Bedrooms

 **2** Bathrooms

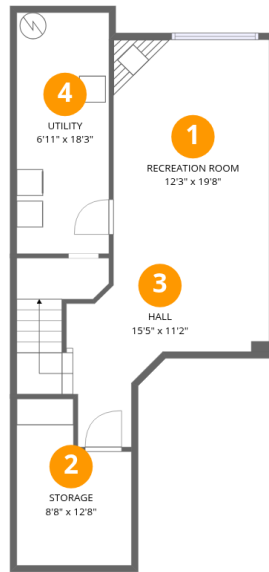
Home data report

**22 Cloutier Street, Stonebridge, Nepean, Ontario, Canada, K2J
4T5**

 **1**
Half baths

 **1**
Garages

22 Cloutier Street, Stonebridge, Nepean, Ontario, Canada, K2J 4T5



Room dimensions

Floor 1 Below grade

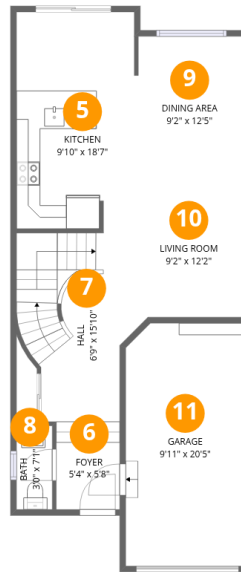
Total:366sqft

Excluded: 243sqft

#		Dimensions	sqft	Counted as living area
1	Recreation Room	12'3" x 19'8"	232 sq. ft	Yes
2	Storage	8'8" x 12'8"	92 sq. ft	No
3	Hall	15'5" x 11'2"	121 sq. ft	Yes
4	Utility	6'11" x 18'3"	127 sq. ft	No

Home data report

22 Cloutier Street, Stonebridge, Nepean, Ontario, Canada, K2J 4T5



Room dimensions

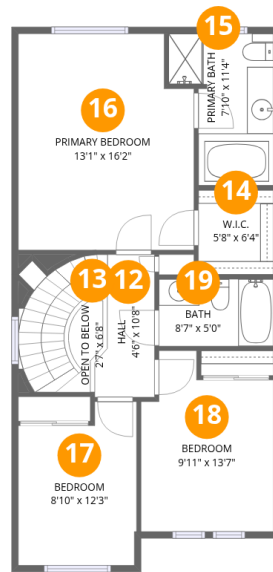
Floor 2

Total:615sqft

Excluded: 201sqft

#		Dimensions	sqft	Counted as living area
5	Kitchen	9'10" x 18'7"	181 sq. ft	Yes
6	Foyer	5'4" x 5'8"	39 sq. ft	Yes
7	Hall	6'9" x 15'10"	136 sq. ft	Yes
8	Bath	3'0" x 7'1"	21 sq. ft	Yes
9	Dining Area	9'2" x 12'5"	113 sq. ft	Yes
10	Living Room	9'2" x 12'2"	104 sq. ft	Yes
11	Garage	9'11" x 20'5"	201 sq. ft	No

22 Cloutier Street, Stonebridge, Nepean, Ontario, Canada, K2J 4T5



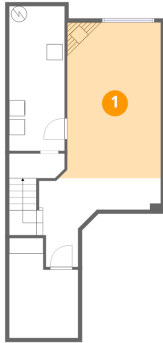
Room dimensions

Floor 3

Total:722sqft Excluded: 13sqft

#		Dimensions	sqft	Counted as living area
12	Hall	4'6" x 10'8"	87 sq. ft	Yes
13	Open To Below	2'7" x 6'8"	13 sq. ft	No
14	W.I.C.	5'8" x 6'4"	36 sq. ft	Yes
15	Primary Bath	7'10" x 11'4"	72 sq. ft	Yes
16	Primary Bedroom	13'1" x 16'2"	204 sq. ft	Yes
17	Bedroom	8'10" x 12'3"	98 sq. ft	Yes
18	Bedroom	9'11" x 13'7"	117 sq. ft	Yes
19	Bath	8'7" x 5'0"	43 sq. ft	Yes

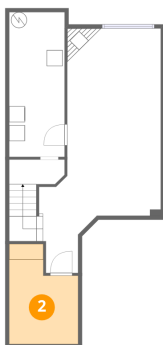
1 Floor 1 - Recreation Room



Dimensions: 12'3" x 19'8"
Area: 232 sq. ft
Counted as living area: No

Heated: Yes
Finished: Yes
Enclosed: Yes
Contiguous: No
Permitted: Yes
Wet space: No
Addition: No
Conversion: No

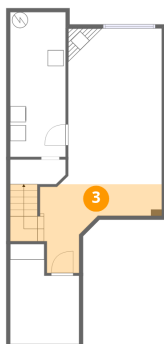
2 Floor 1 - Storage



Dimensions: 8'8" x 12'8"
Area: 92 sq. ft
Counted as living area: No

Heated: No
Finished: No
Enclosed: No
Contiguous: Yes
Permitted: Yes
Wet space: No
Addition: No
Conversion: No

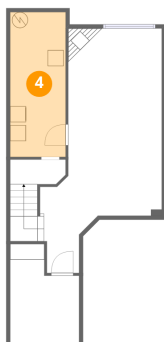
3 Floor 1 - Hall



Dimensions: 15'5" x 11'2"
Area: 121 sq. ft
Counted as living area: No

Heated: Yes
Finished: Yes
Enclosed: Yes
Contiguous: No
Permitted: Yes
Wet space: No
Addition: No
Conversion: No

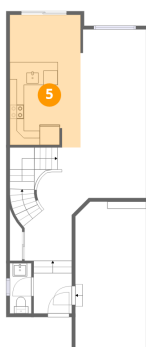
4 Floor 1 - Utility



Dimensions: 6'11" x 18'3"
Area: 127 sq. ft
Counted as living area: No

Heated: Yes
Finished: No
Enclosed: Yes
Contiguous: Yes
Permitted: Yes
Wet space: No
Addition: No
Conversion: No

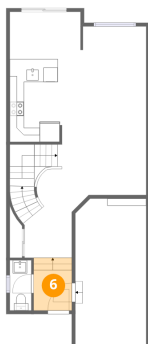
5 Floor 2 - Kitchen



Dimensions: 9'10" x 18'7"
Area: 181 sq. ft
Counted as living area: Yes

Heated: Yes
Finished: Yes
Enclosed: Yes
Contiguous: Yes
Permitted: Yes
Wet space: No
Addition: No
Conversion: No

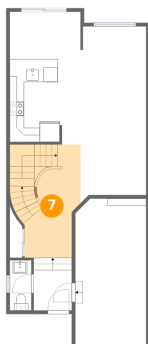
6 Floor 2 - Foyer



Dimensions: 5'4" x 5'8"
Area: 39 sq. ft
Counted as living area: Yes

Heated: Yes
Finished: Yes
Enclosed: Yes
Contiguous: Yes
Permitted: Yes
Wet space: No
Addition: No
Conversion: No

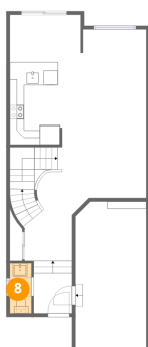
7 Floor 2 - Hall



Dimensions: 6'9" x 15'10"
Area: 136 sq. ft
Counted as living area: Yes

Heated: Yes
Finished: Yes
Enclosed: Yes
Contiguous: Yes
Permitted: Yes
Wet space: No
Addition: No
Conversion: No

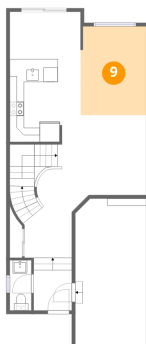
8 Floor 2 - Bath



Dimensions: 3'0" x 7'1"
Area: 21 sq. ft
Counted as living area: Yes

Heated: Yes
Finished: Yes
Enclosed: Yes
Contiguous: Yes
Permitted: Yes
Wet space: Yes
Addition: No
Conversion: No

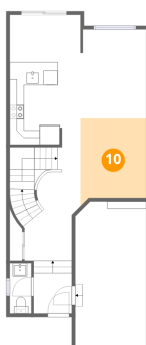
9 Floor 2 - Dining Area



Dimensions: 9'2" x 12'5"
Area: 113 sq. ft
Counted as living area: Yes

Heated: Yes
Finished: Yes
Enclosed: Yes
Contiguous: Yes
Permitted: Yes
Wet space: No
Addition: No
Conversion: No

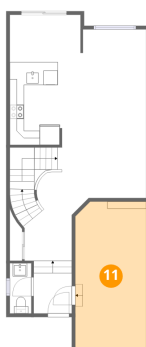
10 Floor 2 - Living Room



Dimensions: 9'2" x 12'2"
Area: 104 sq. ft
Counted as living area: Yes

Heated: Yes
Finished: Yes
Enclosed: Yes
Contiguous: Yes
Permitted: Yes
Wet space: No
Addition: No
Conversion: No

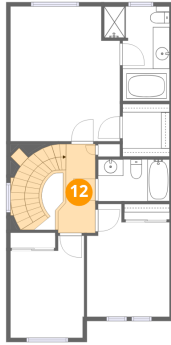
11 Floor 2 - Garage



Dimensions: 9'11" x 20'5"
Area: 201 sq. ft
Counted as living area: No

Heated: No
Finished: No
Enclosed: Yes
Contiguous: Yes
Permitted: Yes
Wet space: No
Addition: No
Conversion: No

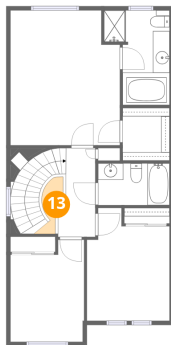
12 Floor 3 - Hall



Dimensions: 4'6" x 10'8"
Area: 87 sq. ft
Counted as living area: Yes

Heated: Yes
Finished: Yes
Enclosed: Yes
Contiguous: Yes
Permitted: Yes
Wet space: No
Addition: No
Conversion: No

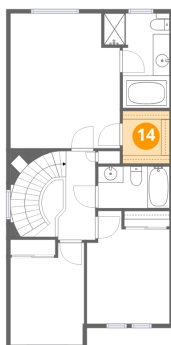
13 Floor 3 - Open To Below



Dimensions: 2'7" x 6'8"
Area: 13 sq. ft
Counted as living area: No

Heated: No
Finished: No
Enclosed: No
Contiguous: Yes
Permitted: No
Wet space: No
Addition: No
Conversion: No

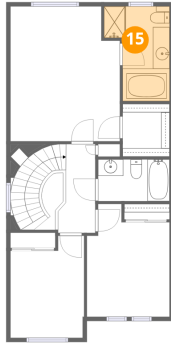
14 Floor 3 - W.I.C.



Dimensions: 5'8" x 6'4"
Area: 36 sq. ft
Counted as living area: Yes

Heated: Yes
Finished: Yes
Enclosed: Yes
Contiguous: Yes
Permitted: Yes
Wet space: No
Addition: No
Conversion: No

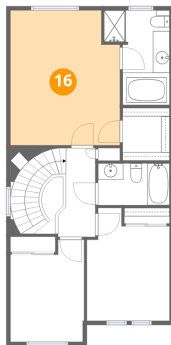
15 Floor 3 - Primary Bath



Dimensions: 7'10" x 11'4"
Area: 72 sq. ft
Counted as living area: Yes

Heated: Yes
Finished: Yes
Enclosed: Yes
Contiguous: Yes
Permitted: Yes
Wet space: Yes
Addition: No
Conversion: No

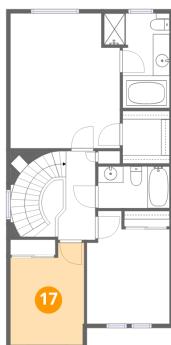
16 Floor 3 - Primary Bedroom



Dimensions: 13'1" x 16'2"
Area: 204 sq. ft
Counted as living area: Yes

Heated: Yes
Finished: Yes
Enclosed: Yes
Contiguous: Yes
Permitted: Yes
Wet space: No
Addition: No
Conversion: No

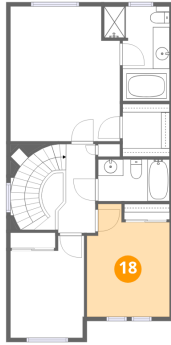
17 Floor 3 - Bedroom



Dimensions: 8'10" x 12'3"
Area: 98 sq. ft
Counted as living area: Yes

Heated: Yes
Finished: Yes
Enclosed: Yes
Contiguous: Yes
Permitted: Yes
Wet space: No
Addition: No
Conversion: No

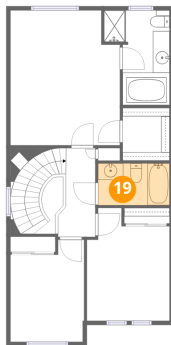
18 Floor 3 - Bedroom



Dimensions: 9'11" x 13'7"
Area: 117 sq. ft
Counted as living area: Yes

Heated: Yes
Finished: Yes
Enclosed: Yes
Contiguous: Yes
Permitted: Yes
Wet space: No
Addition: No
Conversion: No

19 Floor 3 - Bath



Dimensions: 8'7" x 5'0"
Area: 43 sq. ft
Counted as living area: Yes

Heated: Yes
Finished: Yes
Enclosed: Yes
Contiguous: Yes
Permitted: Yes
Wet space: Yes
Addition: No
Conversion: No