

Home data report

11 Park Street, Windham, Rockingham County, New Hampshire,
United States, 03087



Total Area: 2041 sq. ft

Below Ground: 0 sq. ft, 1st Floor: 1038 sq. ft, 2nd Floor: 1003 sq. ft
Excluded: Basement 837 sq. ft, Garage 449 sq. ft, Deck 111 sq. ft, Fireplace 12 sq. ft,
Walls: 244 sq. ft

Property summary

 **3** Floors

 **4** Bedrooms

 **2** Bathrooms

Home data report

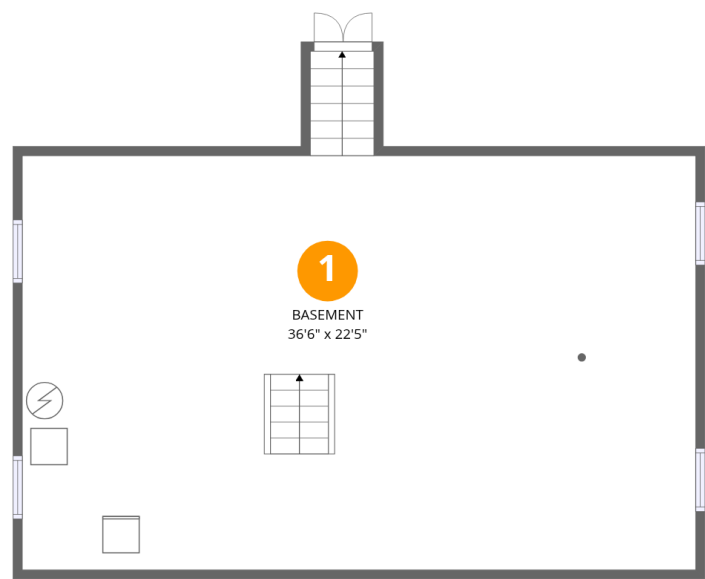
11 Park Street, Windham, Rockingham County, New Hampshire,
United States, 03087

 **1**
Half baths

 **1**
Garages

Home data report

11 Park Street, Windham, Rockingham County, New Hampshire,
United States, 03087



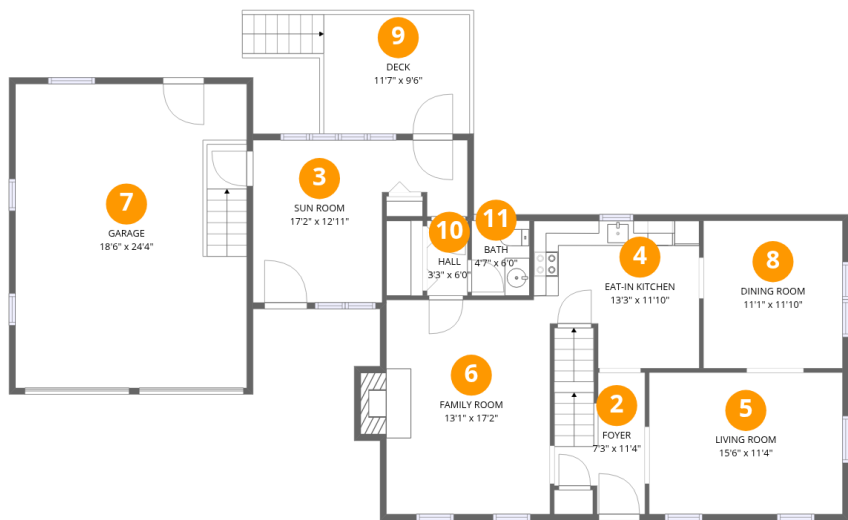
Room dimensions

Floor 1 Below grade Total:0sqft Excluded: 837sqft

#		Dimensions	sqft	Counted as living area
1	Basement	36'6" x 22'5"	837 sq. ft	No

Home data report

11 Park Street, Windham, Rockingham County, New Hampshire,
United States, 03087



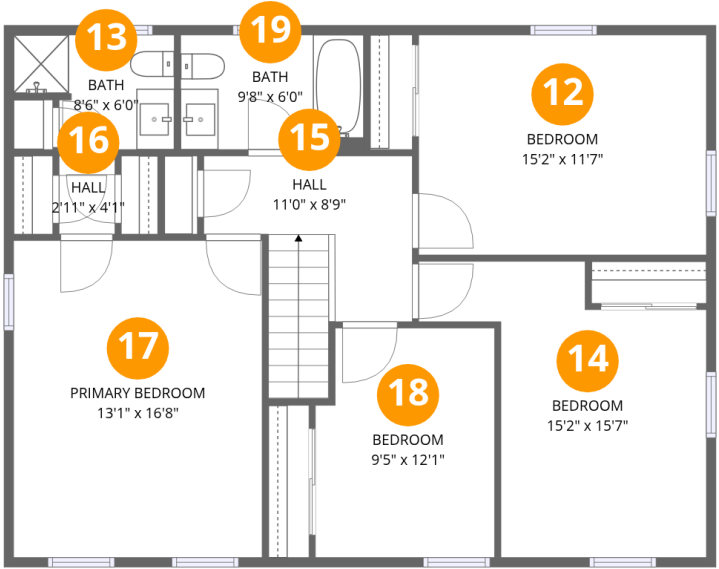
Room dimensions

Floor 2 Total:1038sqft Excluded: 572sqft

#		Dimensions	sqft	Counted as living area
2	Foyer	7'3" x 11'4"	85 sq. ft	Yes
3	Sun Room	17'2" x 12'11"	169 sq. ft	Yes
4	Eat-in Kitchen	13'3" x 11'10"	137 sq. ft	Yes
5	Living Room	15'6" x 11'4"	175 sq. ft	Yes
6	Family Room	13'1" x 17'2"	233 sq. ft	Yes
7	Garage	18'6" x 24'4"	449 sq. ft	No
8	Dining Room	11'1" x 11'10"	131 sq. ft	Yes
9	Deck	11'7" x 9'6"	111 sq. ft	No
10	Hall	3'3" x 6'0"	19 sq. ft	Yes
11	Bath	4'7" x 6'0"	28 sq. ft	Yes

Home data report

11 Park Street, Windham, Rockingham County, New Hampshire,
United States, 03087

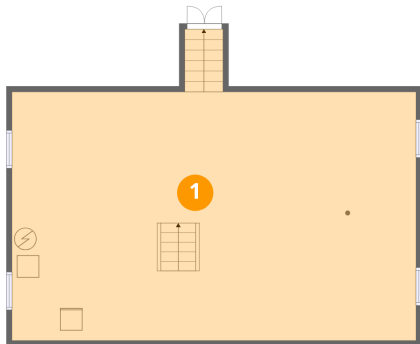


Room dimensions

Floor 3 Total:1003sqft Excluded: 0sqft

#		Dimensions	sqft	Counted as living area
12	Bedroom	15'2" x 11'7"	175 sq. ft	Yes
13	Bath	8'6" x 6'0"	44 sq. ft	Yes
14	Bedroom	15'2" x 15'7"	166 sq. ft	Yes
15	Hall	11'0" x 8'9"	93 sq. ft	Yes
16	Hall	2'11" x 4'1"	12 sq. ft	Yes
17	Primary Bedroom	13'1" x 16'8"	218 sq. ft	Yes
18	Bedroom	9'5" x 12'1"	110 sq. ft	Yes
19	Bath	9'8" x 6'0"	58 sq. ft	Yes

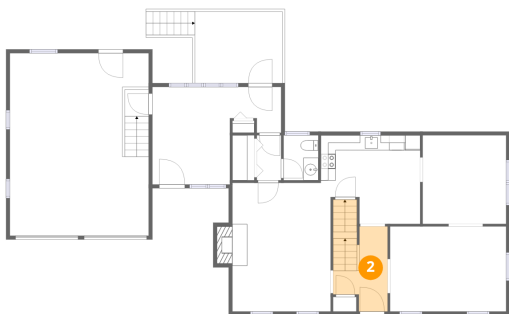
1 Floor 1 - Basement



Dimensions: 36'6" x 22'5"
Area: 837 sq. ft
Counted as living area: No

Heated: Yes
Finished: No
Enclosed: Yes
Contiguous: Yes
Permitted: Yes
Wet space: No
Addition: No
Conversion: No

2 Floor 2 - Foyer



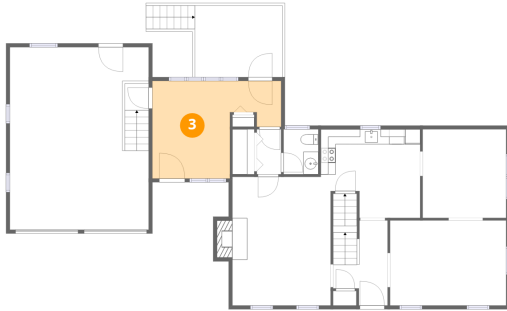
Dimensions: 7'3" x 11'4"
Area: 85 sq. ft
Counted as living area: Yes

Heated: Yes
Finished: Yes
Enclosed: Yes
Contiguous: Yes
Permitted: Yes
Wet space: No
Addition: No
Conversion: No

Home data report

11 Park Street, Windham, Rockingham County, New Hampshire,
United States, 03087

3 Floor 2 - Sun Room



Dimensions: 17'2" x 12'11"
Area: 169 sq. ft
Counted as living area: Yes

Heated: Yes
Finished: Yes
Enclosed: Yes
Contiguous: Yes
Permitted: Yes
Wet space: No
Addition: No
Conversion: No

4 Floor 2 - Eat-in Kitchen



Dimensions: 13'3" x 11'10"
Area: 137 sq. ft
Counted as living area: Yes

Heated: Yes
Finished: Yes
Enclosed: Yes
Contiguous: Yes
Permitted: Yes
Wet space: No
Addition: No
Conversion: No

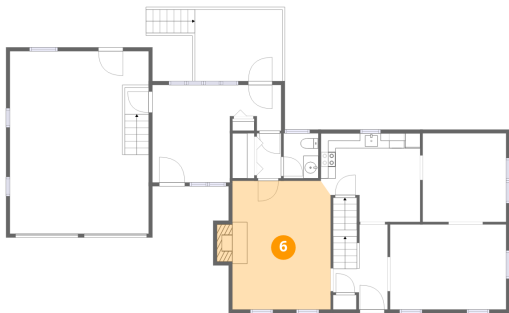
5 Floor 2 - Living Room



Dimensions: 15'6" x 11'4"
Area: 175 sq. ft
Counted as living area: Yes

Heated: Yes
Finished: Yes
Enclosed: Yes
Contiguous: Yes
Permitted: Yes
Wet space: No
Addition: No
Conversion: No

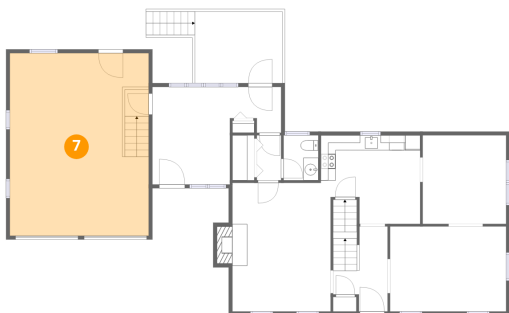
6 Floor 2 - Family Room



Dimensions: 13'1" x 17'2"
Area: 233 sq. ft
Counted as living area: Yes

Heated: Yes
Finished: Yes
Enclosed: Yes
Contiguous: Yes
Permitted: Yes
Wet space: No
Addition: No
Conversion: No

7 Floor 2 - Garage



Dimensions: 18'6" x 24'4"
Area: 449 sq. ft
Counted as living area: No

Heated: No
Finished: No
Enclosed: Yes
Contiguous: Yes
Permitted: Yes
Wet space: No
Addition: No
Conversion: No

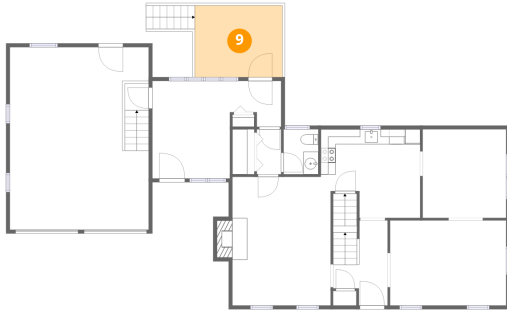
8 Floor 2 - Dining Room



Dimensions: 11'1" x 11'10"
Area: 131 sq. ft
Counted as living area: Yes

Heated: Yes
Finished: Yes
Enclosed: Yes
Contiguous: Yes
Permitted: Yes
Wet space: No
Addition: No
Conversion: No

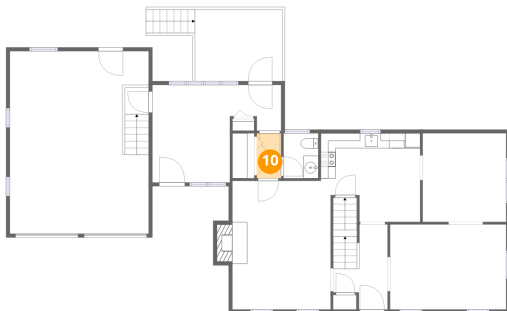
9 Floor 2 - Deck



Dimensions: 11'7" x 9'6"
Area: 111 sq. ft
Counted as living area: No

Heated: No
Finished: No
Enclosed: No
Contiguous: Yes
Permitted: Yes
Wet space: No
Addition: No
Conversion: No

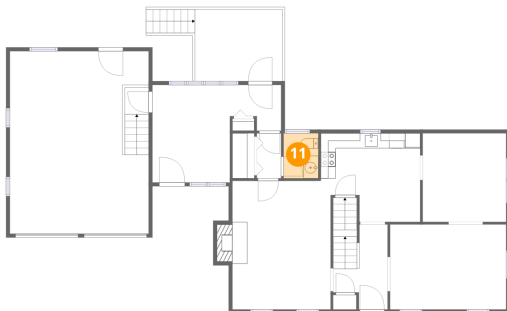
10 Floor 2 - Hall



Dimensions: 3'3" x 6'0"
Area: 19 sq. ft
Counted as living area: Yes

Heated: Yes
Finished: Yes
Enclosed: Yes
Contiguous: Yes
Permitted: Yes
Wet space: No
Addition: No
Conversion: No

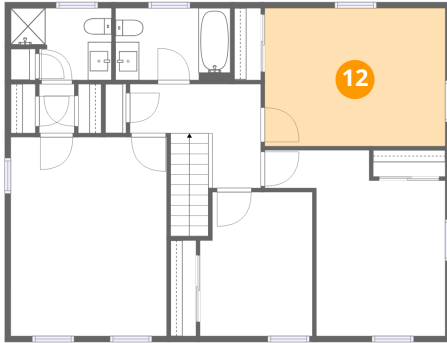
11 Floor 2 - Bath



Dimensions: 4'7" x 6'0"
Area: 28 sq. ft
Counted as living area: Yes

Heated: Yes
Finished: Yes
Enclosed: Yes
Contiguous: Yes
Permitted: Yes
Wet space: Yes
Addition: No
Conversion: No

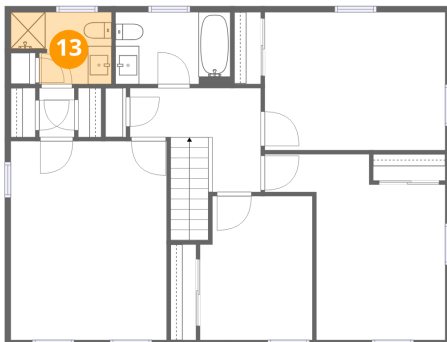
12 Floor 3 - Bedroom



Dimensions: 15'2" x 11'7"
Area: 175 sq. ft
Counted as living area: Yes

Heated: Yes
Finished: Yes
Enclosed: Yes
Contiguous: Yes
Permitted: Yes
Wet space: No
Addition: No
Conversion: No

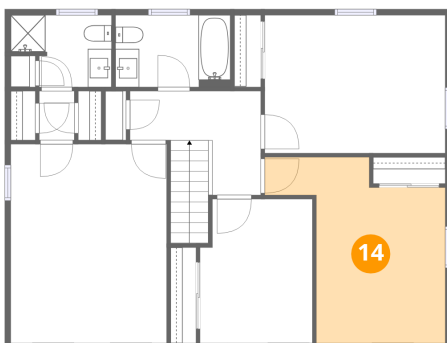
13 Floor 3 - Bath



Dimensions: 8'6" x 6'0"
Area: 44 sq. ft
Counted as living area: Yes

Heated: Yes
Finished: Yes
Enclosed: Yes
Contiguous: Yes
Permitted: Yes
Wet space: Yes
Addition: No
Conversion: No

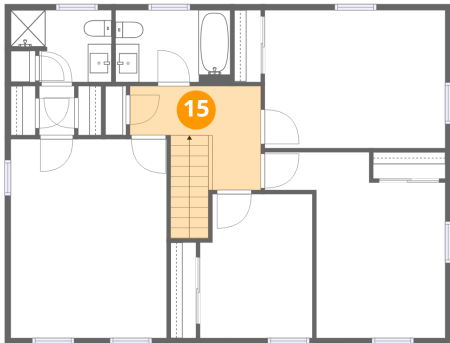
14 Floor 3 - Bedroom



Dimensions: 15'2" x 15'7"
Area: 166 sq. ft
Counted as living area: Yes

Heated: Yes
Finished: Yes
Enclosed: Yes
Contiguous: Yes
Permitted: Yes
Wet space: No
Addition: No
Conversion: No

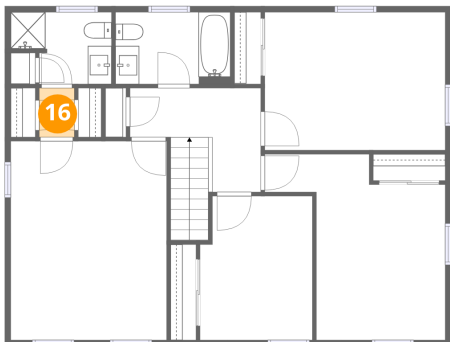
15 Floor 3 - Hall



Dimensions: 11'0" x 8'9"
Area: 93 sq. ft
Counted as living area: Yes

Heated: Yes
Finished: Yes
Enclosed: Yes
Contiguous: Yes
Permitted: Yes
Wet space: No
Addition: No
Conversion: No

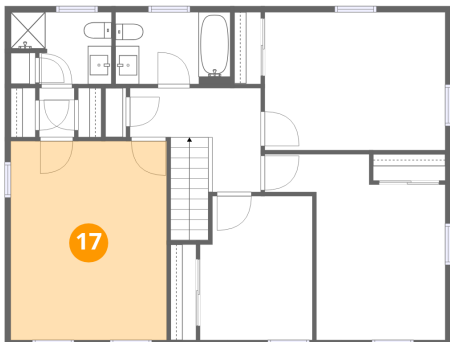
16 Floor 3 - Hall



Dimensions: 2'11" x 4'1"
Area: 12 sq. ft
Counted as living area: Yes

Heated: Yes
Finished: Yes
Enclosed: Yes
Contiguous: Yes
Permitted: Yes
Wet space: No
Addition: No
Conversion: No

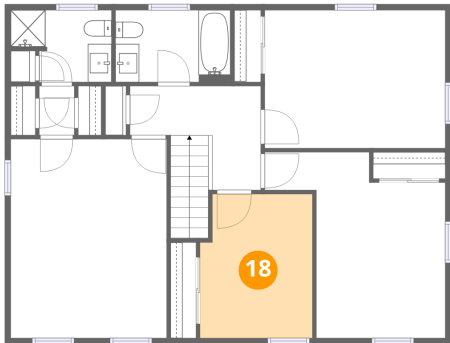
17 Floor 3 - Primary Bedroom



Dimensions: 13'1" x 16'8"
Area: 218 sq. ft
Counted as living area: Yes

Heated: Yes
Finished: Yes
Enclosed: Yes
Contiguous: Yes
Permitted: Yes
Wet space: No
Addition: No
Conversion: No

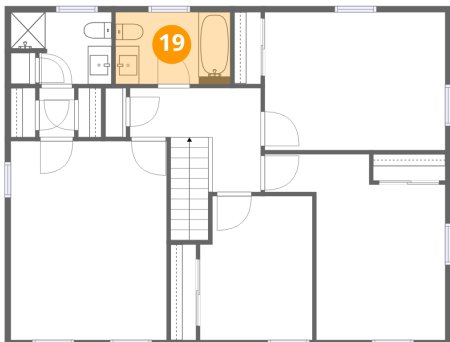
18 Floor 3 - Bedroom



Dimensions: 9'5" x 12'1"
Area: 110 sq. ft
Counted as living area: Yes

Heated: Yes
Finished: Yes
Enclosed: Yes
Contiguous: Yes
Permitted: Yes
Wet space: No
Addition: No
Conversion: No

19 Floor 3 - Bath



Dimensions: 9'8" x 6'0"
Area: 58 sq. ft
Counted as living area: Yes

Heated: Yes
Finished: Yes
Enclosed: Yes
Contiguous: Yes
Permitted: Yes
Wet space: Yes
Addition: No
Conversion: No