

Home data report

147 Westridge Drive, Amsterdam, Daleville, Botetourt County, Virginia, United States, 24083



Total Area: 2566 sq. ft

Basement: 959 sq. ft, 1st Floor: 1607 sq. ft

Excluded: Undefined 32 sq. ft, Basement 613 sq. ft, Covered patio 515 sq. ft, Garage 494 sq. ft, Laundry 23 sq. ft, Porch 196 sq. ft, Covered deck 305 sq. ft, Deck 299 sq. ft, Walls: 211 sq. ft

Property summary



Home data report

**147 Westridge Drive, Amsterdam, Daleville, Botetourt County,
Virginia, United States, 24083**



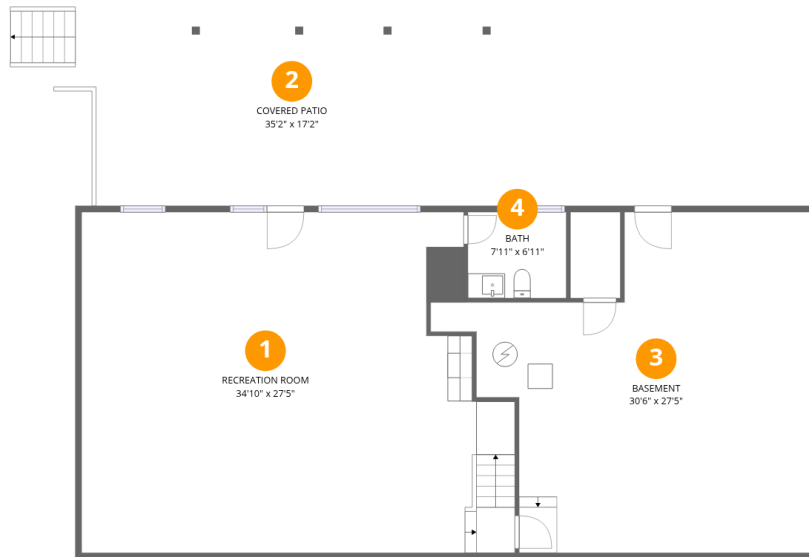
1
Half baths



1
Garages

Home data report

147 Westridge Drive, Amsterdam, Daleville, Botetourt County, Virginia, United States, 24083



Room dimensions

Floor 1 Below grade

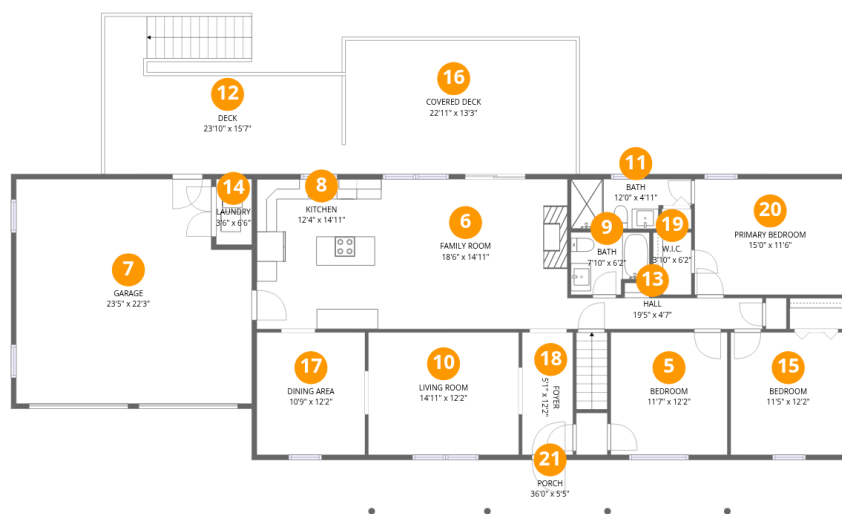
Total:959sqft

Excluded: 1160sqft

#		Dimensions	sqft	Counted as living area
1	Recreation Room	34'10" x 27'5"	954 sq. ft	Yes
2	Covered Patio	35'2" x 17'2"	602 sq. ft	No
3	Basement	30'6" x 27'5"	835 sq. ft	No
4	Bath	7'11" x 6'11"	55 sq. ft	Yes

Home data report

147 Westridge Drive, Amsterdam, Daleville, Botetourt County, Virginia, United States, 24083



Room dimensions

Floor 2

Total:1607sqft Excluded: 1317sqft

#		Dimensions	sqft	Counted as living area
5	Bedroom	11'7" x 12'2"	141 sq. ft	Yes
6	Family Room	18'6" x 14'11"	276 sq. ft	Yes
7	Garage	23'5" x 22'3"	521 sq. ft	No
8	Kitchen	12'4" x 14'11"	184 sq. ft	Yes
9	Bath	7'10" x 6'2"	49 sq. ft	Yes
10	Living Room	14'11" x 12'2"	182 sq. ft	Yes
11	Bath	12'0" x 4'11"	59 sq. ft	Yes
12	Deck	23'10" x 15'7"	372 sq. ft	No
13	Hall	19'5" x 4'7"	89 sq. ft	Yes
14	Laundry	3'6" x 6'6"	23 sq. ft	No
15	Bedroom	11'5" x 12'2"	139 sq. ft	Yes

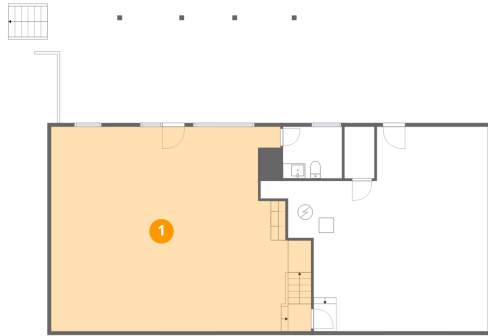
Home data report

**147 Westridge Drive, Amsterdam, Daleville, Botetourt County,
Virginia, United States, 24083**

#		Dimensions	sqft	Counted as living area
16	Covered Deck	22'11" x 13'3"	304 sq. ft	No
17	Dining Area	10'9" x 12'2"	131 sq. ft	Yes
18	Foyer	5'1" x 12'2"	61 sq. ft	Yes
19	W.I.C.	3'10" x 6'2"	24 sq. ft	Yes
20	Primary Bedroom	15'0" x 11'6"	172 sq. ft	Yes
21	Porch	36'0" x 5'5"	196 sq. ft	No

147 Westridge Drive, Amsterdam, Daleville, Botetourt County, Virginia, United States, 24083

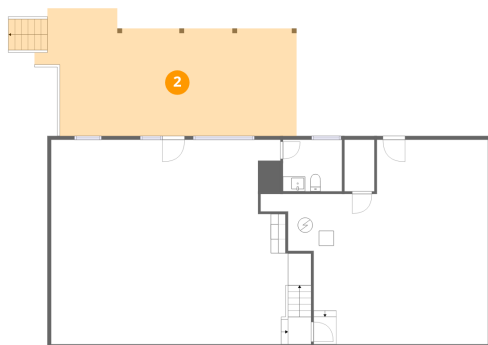
1 Floor 1 - Recreation Room



Dimensions: 34'10" x 27'5"
Area: 954 sq. ft
Counted as living area: Yes

Heated: Yes
Finished: Yes
Enclosed: Yes
Contiguous: Yes
Permitted: Yes
Wet space: No
Addition: No
Conversion: No

2 Floor 1 - Covered Patio

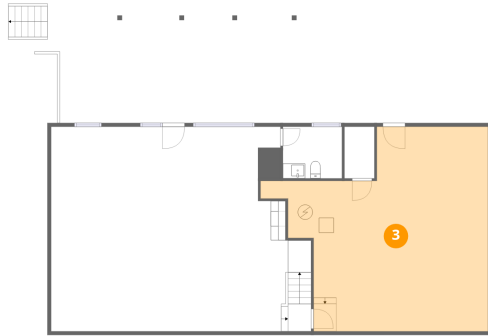


Dimensions: 35'2" x 17'2"
Area: 602 sq. ft
Counted as living area: No

Heated: No
Finished: No
Enclosed: No
Contiguous: Yes
Permitted: Yes
Wet space: No
Addition: No
Conversion: No

147 Westridge Drive, Amsterdam, Daleville, Botetourt County, Virginia, United States, 24083

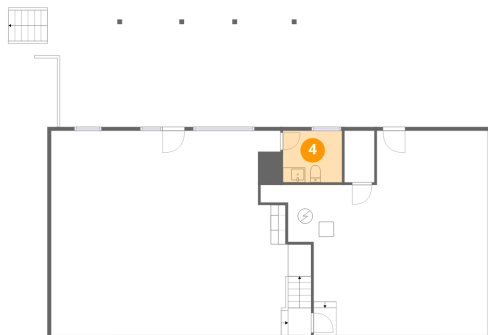
3 Floor 1 - Basement



Dimensions: 30'6" x 27'5"
Area: 835 sq. ft
Counted as living area: No

Heated: Yes
Finished: No
Enclosed: Yes
Contiguous: Yes
Permitted: Yes
Wet space: No
Addition: No
Conversion: No

4 Floor 1 - Bath



Dimensions: 7'11" x 6'11"
Area: 55 sq. ft
Counted as living area: Yes

Heated: Yes
Finished: Yes
Enclosed: Yes
Contiguous: Yes
Permitted: Yes
Wet space: Yes
Addition: No
Conversion: No

5 Floor 2 - Bedroom

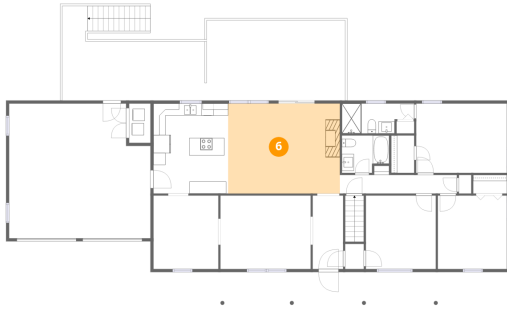


Dimensions: 11'7" x 12'2"
Area: 141 sq. ft
Counted as living area: Yes

Heated: Yes
Finished: Yes
Enclosed: Yes
Contiguous: Yes
Permitted: Yes
Wet space: No
Addition: No
Conversion: No

147 Westridge Drive, Amsterdam, Daleville, Botetourt County, Virginia, United States, 24083

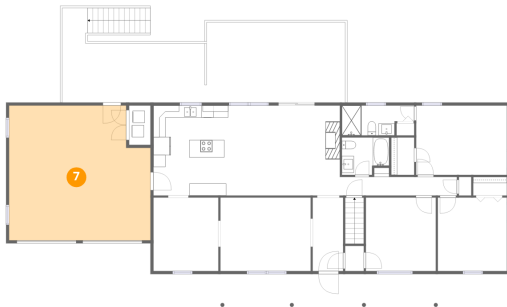
6 Floor 2 - Family Room



Dimensions: 18'6" x 14'11"
Area: 276 sq. ft
Counted as living area: Yes

Heated: Yes
Finished: Yes
Enclosed: Yes
Contiguous: Yes
Permitted: Yes
Wet space: No
Addition: No
Conversion: No

7 Floor 2 - Garage



Dimensions: 23'5" x 22'3"
Area: 521 sq. ft
Counted as living area: No

Heated: No
Finished: No
Enclosed: Yes
Contiguous: Yes
Permitted: Yes
Wet space: No
Addition: No
Conversion: No

8 Floor 2 - Kitchen



Dimensions: 12'4" x 14'11"
Area: 184 sq. ft
Counted as living area: Yes

Heated: Yes
Finished: Yes
Enclosed: Yes
Contiguous: Yes
Permitted: Yes
Wet space: No
Addition: No
Conversion: No

147 Westridge Drive, Amsterdam, Daleville, Botetourt County, Virginia, United States, 24083

9 Floor 2 - Bath



Dimensions: 7'10" x 6'2"
Area: 49 sq. ft
Counted as living area: Yes

Heated: Yes
Finished: Yes
Enclosed: Yes
Contiguous: Yes
Permitted: Yes
Wet space: Yes
Addition: No
Conversion: No

10 Floor 2 - Living Room



Dimensions: 14'11" x 12'2"
Area: 182 sq. ft
Counted as living area: Yes

Heated: Yes
Finished: Yes
Enclosed: Yes
Contiguous: Yes
Permitted: Yes
Wet space: No
Addition: No
Conversion: No

11 Floor 2 - Bath

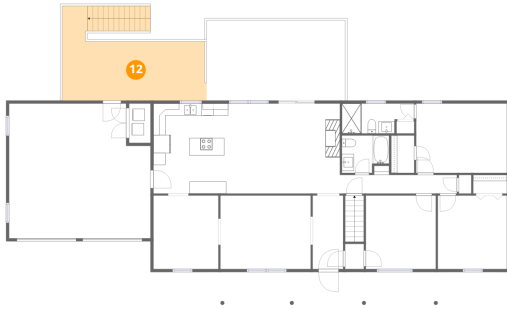


Dimensions: 12'0" x 4'11"
Area: 59 sq. ft
Counted as living area: Yes

Heated: Yes
Finished: Yes
Enclosed: Yes
Contiguous: Yes
Permitted: Yes
Wet space: Yes
Addition: No
Conversion: No

147 Westridge Drive, Amsterdam, Daleville, Botetourt County, Virginia, United States, 24083

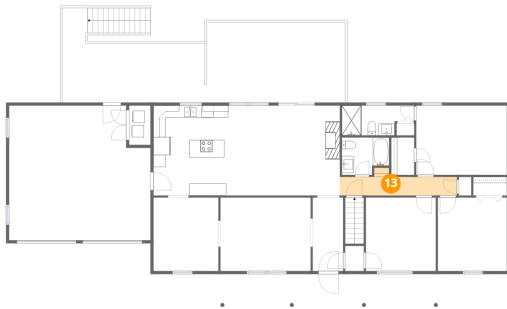
12 Floor 2 - Deck



Dimensions: 23'10" x 15'7"
Area: 372 sq. ft
Counted as living area: No

Heated: No
Finished: No
Enclosed: No
Contiguous: Yes
Permitted: Yes
Wet space: No
Addition: No
Conversion: No

13 Floor 2 - Hall



Dimensions: 19'5" x 4'7"
Area: 89 sq. ft
Counted as living area: Yes

Heated: Yes
Finished: Yes
Enclosed: Yes
Contiguous: Yes
Permitted: Yes
Wet space: No
Addition: No
Conversion: No

14 Floor 2 - Laundry



Dimensions: 3'6" x 6'6"
Area: 23 sq. ft
Counted as living area: No

Heated: Yes
Finished: No
Enclosed: Yes
Contiguous: Yes
Permitted: Yes
Wet space: No
Addition: No
Conversion: No

15 Floor 2 - Bedroom



Dimensions: 11'5" x 12'2"
Area: 139 sq. ft
Counted as living area: Yes

Heated: Yes
Finished: Yes
Enclosed: Yes
Contiguous: Yes
Permitted: Yes
Wet space: No
Addition: No
Conversion: No

16 Floor 2 - Covered Deck



Dimensions: 22'11" x 13'3"
Area: 304 sq. ft
Counted as living area: No

Heated: No
Finished: No
Enclosed: No
Contiguous: Yes
Permitted: Yes
Wet space: No
Addition: No
Conversion: No

17 Floor 2 - Dining Area



Dimensions: 10'9" x 12'2"
Area: 131 sq. ft
Counted as living area: Yes

Heated: Yes
Finished: Yes
Enclosed: Yes
Contiguous: Yes
Permitted: Yes
Wet space: No
Addition: No
Conversion: No

147 Westridge Drive, Amsterdam, Daleville, Botetourt County, Virginia, United States, 24083

18 Floor 2 - Foyer



Dimensions: 5'1" x 12'2"
Area: 61 sq. ft
Counted as living area: Yes

Heated: Yes
Finished: Yes
Enclosed: Yes
Contiguous: Yes
Permitted: Yes
Wet space: No
Addition: No
Conversion: No

19 Floor 2 - W.I.C.



Dimensions: 3'10" x 6'2"
Area: 24 sq. ft
Counted as living area: Yes

Heated: Yes
Finished: Yes
Enclosed: Yes
Contiguous: Yes
Permitted: Yes
Wet space: No
Addition: No
Conversion: No

20 Floor 2 - Primary Bedroom

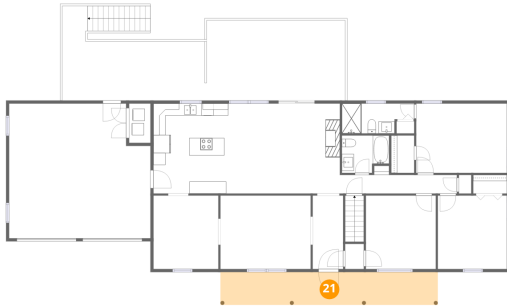


Dimensions: 15'0" x 11'6"
Area: 172 sq. ft
Counted as living area: Yes

Heated: Yes
Finished: Yes
Enclosed: Yes
Contiguous: Yes
Permitted: Yes
Wet space: No
Addition: No
Conversion: No

147 Westridge Drive, Amsterdam, Daleville, Botetourt County,
Virginia, United States, 24083

21 Floor 2 - Porch



Dimensions: 36'0" x 5'5"
Area: 196 sq. ft
Counted as living area: No

Heated: No
Finished: No
Enclosed: No
Contiguous: Yes
Permitted: Yes
Wet space: No
Addition: No
Conversion: No