

Home data report

25 Nor'east Lane, Plymouth, Plymouth County, Massachusetts,
United States, 02360



Total Area: 2193 sq. ft

1st Floor: 897 sq. ft, 2nd Floor: 961 sq. ft, 3rd Floor: 335 sq. ft

Excluded: Deck 195 sq. ft, Fireplace 10 sq. ft, Walls: 171 sq. ft

Property summary



3
Floors



4
Bedrooms



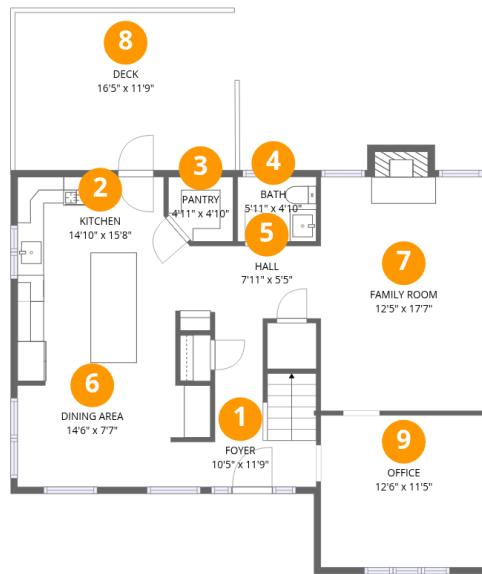
3
Bathrooms



1
Half baths

Home data report

25 Nor'east Lane, Plymouth, Plymouth County, Massachusetts,
United States, 02360



Room dimensions

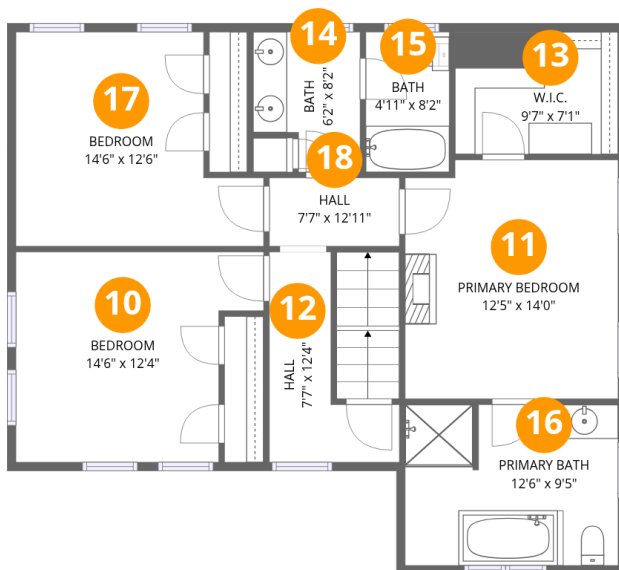
Floor 1

Total:897sqft Excluded: 205sqft

#		Dimensions	sqft	Counted as living area
1	Foyer	10'5" x 11'9"	122 sq. ft	Yes
2	Kitchen	14'10" x 15'8"	232 sq. ft	Yes
3	Pantry	4'11" x 4'10"	24 sq. ft	Yes
4	Bath	5'11" x 4'10"	29 sq. ft	Yes
5	Hall	7'11" x 5'5"	43 sq. ft	Yes
6	Dining Area	14'6" x 7'7"	110 sq. ft	Yes
7	Family Room	12'5" x 17'7"	218 sq. ft	Yes
8	Deck	16'5" x 11'9"	194 sq. ft	No
9	Office	12'6" x 11'5"	142 sq. ft	Yes

Home data report

25 Nor'east Lane, Plymouth, Plymouth County, Massachusetts, United States, 02360



Room dimensions

Floor 2

Total:961sqft Excluded: 0sqft

#		Dimensions	sqft	Counted as living area
10	Bedroom	14'6" x 12'4"	178 sq. ft	Yes
11	Primary Bedroom	12'5" x 14'0"	174 sq. ft	Yes
12	Hall	7'7" x 12'4"	94 sq. ft	Yes
13	W.I.C.	9'7" x 7'1"	68 sq. ft	Yes
14	Bath	6'2" x 8'2"	51 sq. ft	Yes
15	Bath	4'11" x 8'2"	40 sq. ft	Yes
16	Primary Bath	12'6" x 9'5"	117 sq. ft	Yes
17	Bedroom	14'6" x 12'6"	181 sq. ft	Yes
18	Hall	7'7" x 12'11"	98 sq. ft	Yes

Home data report

25 Nor'east Lane, Plymouth, Plymouth County, Massachusetts,
United States, 02360



Room dimensions

Floor 3

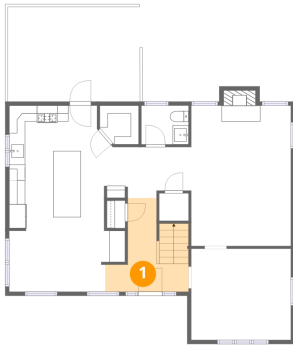
Total:335sqft

Excluded: 0sqft

#		Dimensions	sqft	Counted as living area
19	Bedroom	16'5" x 17'2"	281 sq. ft	Yes
20	Bath	5'8" x 8'9"	50 sq. ft	Yes

25 Nor'east Lane, Plymouth, Plymouth County, Massachusetts,
United States, 02360

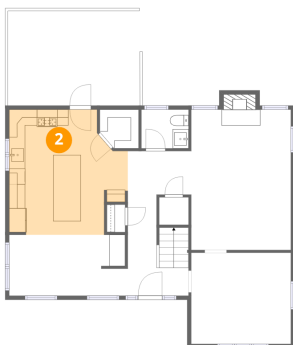
1 Floor 1 - Foyer



Dimensions: 10'5" x 11'9"
Area: 122 sq. ft
Counted as living area: Yes

Heated: Yes
Finished: Yes
Enclosed: Yes
Contiguous: Yes
Permitted: Yes
Wet space: No
Addition: No
Conversion: No

2 Floor 1 - Kitchen



Dimensions: 14'10" x 15'8"
Area: 232 sq. ft
Counted as living area: Yes

Heated: Yes
Finished: Yes
Enclosed: Yes
Contiguous: Yes
Permitted: Yes
Wet space: No
Addition: No
Conversion: No

25 Nor'east Lane, Plymouth, Plymouth County, Massachusetts,
United States, 02360

3 Floor 1 - Pantry



Dimensions: 4'11" x 4'10"
Area: 24 sq. ft
Counted as living area: Yes

Heated: Yes
Finished: Yes
Enclosed: Yes
Contiguous: Yes
Permitted: Yes
Wet space: No
Addition: No
Conversion: No

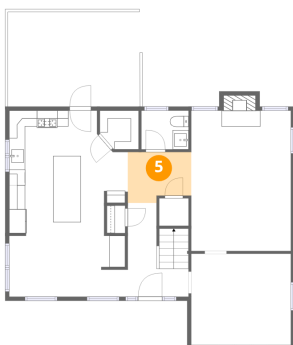
4 Floor 1 - Bath



Dimensions: 5'11" x 4'10"
Area: 29 sq. ft
Counted as living area: Yes

Heated: Yes
Finished: Yes
Enclosed: Yes
Contiguous: Yes
Permitted: Yes
Wet space: Yes
Addition: No
Conversion: No

5 Floor 1 - Hall



Dimensions: 7'11" x 5'5"
Area: 43 sq. ft
Counted as living area: Yes

Heated: Yes
Finished: Yes
Enclosed: Yes
Contiguous: Yes
Permitted: Yes
Wet space: No
Addition: No
Conversion: No

6 Floor 1 - Dining Area



Dimensions: 14'6" x 7'7"
Area: 110 sq. ft
Counted as living area: Yes

Heated: Yes
Finished: Yes
Enclosed: Yes
Contiguous: Yes
Permitted: Yes
Wet space: No
Addition: No
Conversion: No

7 Floor 1 - Family Room



Dimensions: 12'5" x 17'7"
Area: 218 sq. ft
Counted as living area: Yes

Heated: Yes
Finished: Yes
Enclosed: Yes
Contiguous: Yes
Permitted: Yes
Wet space: No
Addition: No
Conversion: No

8 Floor 1 - Deck



Dimensions: 16'5" x 11'9"
Area: 194 sq. ft
Counted as living area: No

Heated: No
Finished: No
Enclosed: No
Contiguous: Yes
Permitted: Yes
Wet space: No
Addition: No
Conversion: No

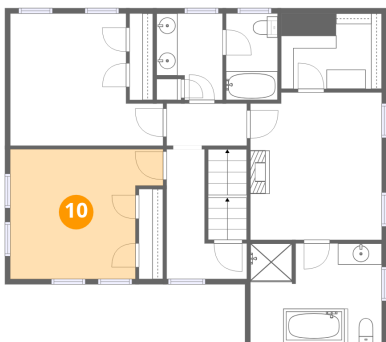
9 Floor 1 - Office



Dimensions: 12'6" x 11'5"
Area: 142 sq. ft
Counted as living area: Yes

Heated: Yes
Finished: Yes
Enclosed: Yes
Contiguous: Yes
Permitted: Yes
Wet space: No
Addition: No
Conversion: No

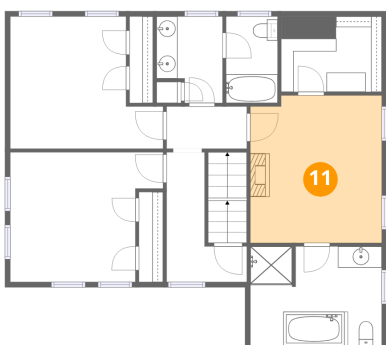
10 Floor 2 - Bedroom



Dimensions: 14'6" x 12'4"
Area: 178 sq. ft
Counted as living area: Yes

Heated: Yes
Finished: Yes
Enclosed: Yes
Contiguous: Yes
Permitted: Yes
Wet space: No
Addition: No
Conversion: No

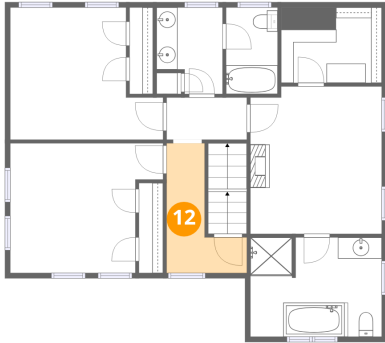
11 Floor 2 - Primary Bedroom



Dimensions: 12'5" x 14'0"
Area: 174 sq. ft
Counted as living area: Yes

Heated: Yes
Finished: Yes
Enclosed: Yes
Contiguous: Yes
Permitted: Yes
Wet space: No
Addition: No
Conversion: No

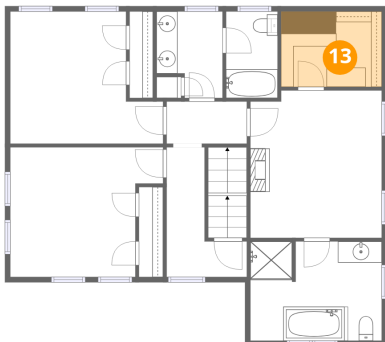
12 Floor 2 - Hall



Dimensions: 7'7" x 12'4"
Area: 94 sq. ft
Counted as living area: Yes

Heated: Yes
Finished: Yes
Enclosed: Yes
Contiguous: Yes
Permitted: Yes
Wet space: No
Addition: No
Conversion: No

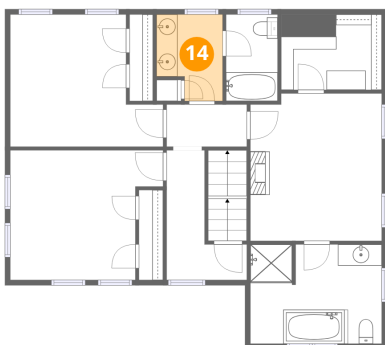
13 Floor 2 - W.I.C.



Dimensions: 9'7" x 7'1"
Area: 68 sq. ft
Counted as living area: Yes

Heated: Yes
Finished: Yes
Enclosed: Yes
Contiguous: Yes
Permitted: Yes
Wet space: No
Addition: No
Conversion: No

14 Floor 2 - Bath

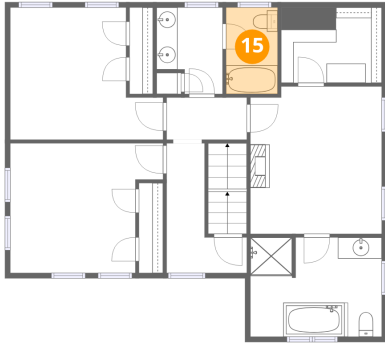


Dimensions: 6'2" x 8'2"
Area: 51 sq. ft
Counted as living area: Yes

Heated: Yes
Finished: Yes
Enclosed: Yes
Contiguous: Yes
Permitted: Yes
Wet space: Yes
Addition: No
Conversion: No

25 Nor'east Lane, Plymouth, Plymouth County, Massachusetts,
United States, 02360

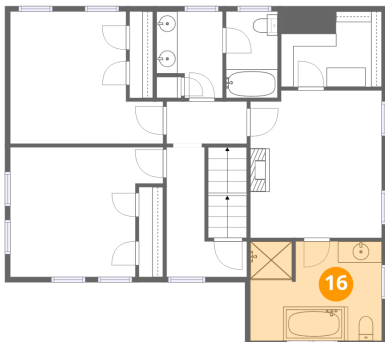
15 Floor 2 - Bath



Dimensions: 4'11" x 8'2"
Area: 40 sq. ft
Counted as living area: Yes

Heated: Yes
Finished: Yes
Enclosed: Yes
Contiguous: Yes
Permitted: Yes
Wet space: Yes
Addition: No
Conversion: No

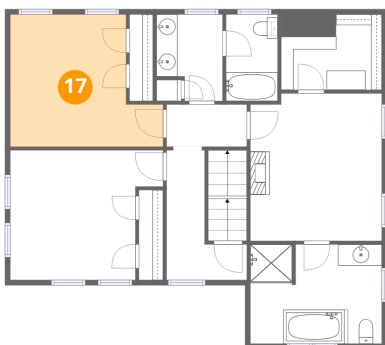
16 Floor 2 - Primary Bath



Dimensions: 12'6" x 9'5"
Area: 117 sq. ft
Counted as living area: Yes

Heated: Yes
Finished: Yes
Enclosed: Yes
Contiguous: Yes
Permitted: Yes
Wet space: Yes
Addition: No
Conversion: No

17 Floor 2 - Bedroom

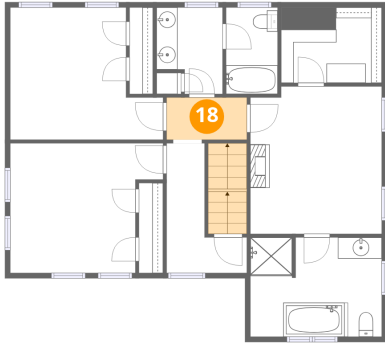


Dimensions: 14'6" x 12'6"
Area: 181 sq. ft
Counted as living area: Yes

Heated: Yes
Finished: Yes
Enclosed: Yes
Contiguous: Yes
Permitted: Yes
Wet space: No
Addition: No
Conversion: No

25 Nor'east Lane, Plymouth, Plymouth County, Massachusetts,
United States, 02360

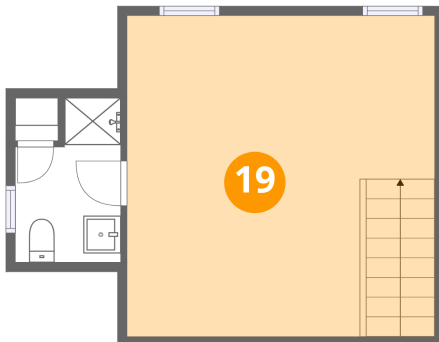
18 Floor 2 - Hall



Dimensions: 7'7" x 12'11"
Area: 98 sq. ft
Counted as living area: Yes

Heated: Yes
Finished: Yes
Enclosed: Yes
Contiguous: Yes
Permitted: Yes
Wet space: No
Addition: No
Conversion: No

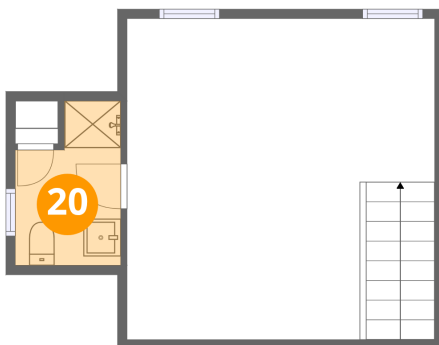
19 Floor 3 - Bedroom



Dimensions: 16'5" x 17'2"
Area: 281 sq. ft
Counted as living area: Yes

Heated: Yes
Finished: Yes
Enclosed: Yes
Contiguous: Yes
Permitted: Yes
Wet space: No
Addition: No
Conversion: No

20 Floor 3 - Bath



Dimensions: 5'8" x 8'9"
Area: 50 sq. ft
Counted as living area: Yes

Heated: Yes
Finished: Yes
Enclosed: Yes
Contiguous: Yes
Permitted: Yes
Wet space: Yes
Addition: No
Conversion: No