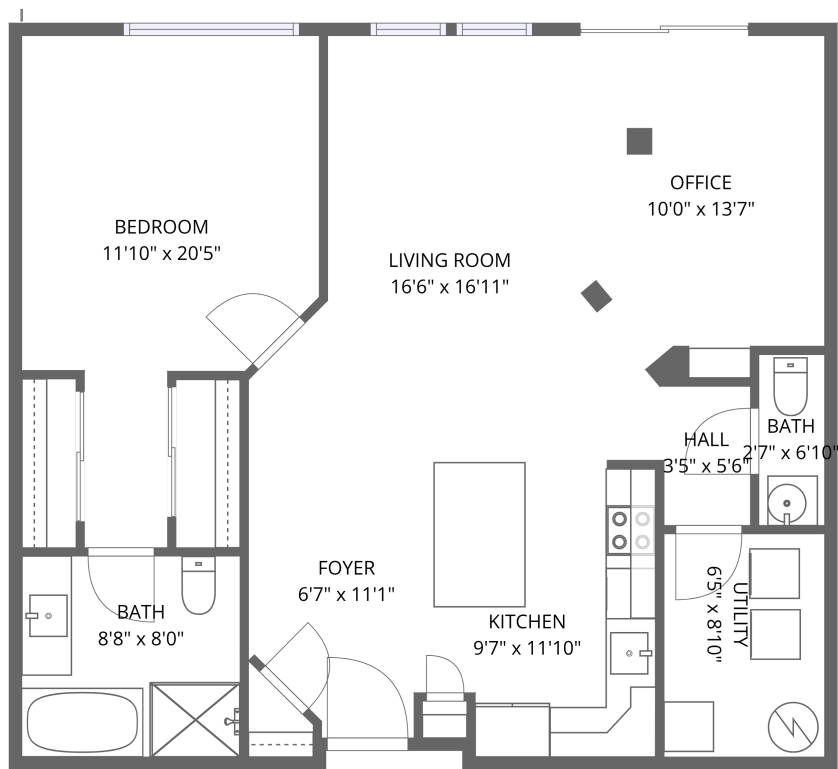


Home data report

10184 Park Meadows Drive, Lone Tree, Douglas County,
Colorado, United States, 80124, 1404



1st floor


Total Area: 913 sq. ft

1st Floor: 913 sq. ft

Excluded: Walls: 0 sq. ft

Property summary

 1 Floors

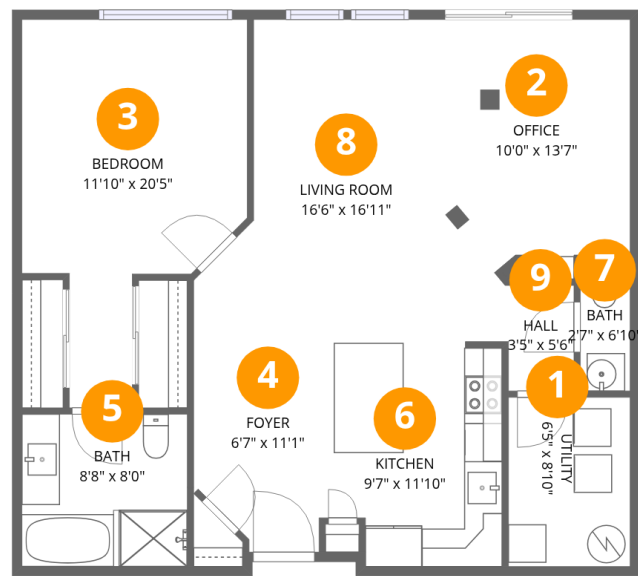
 1 Bedrooms

 1 Bathrooms

 1 Half baths

Home data report

10184 Park Meadows Drive, Lone Tree, Douglas County,
Colorado, United States, 80124, 1404



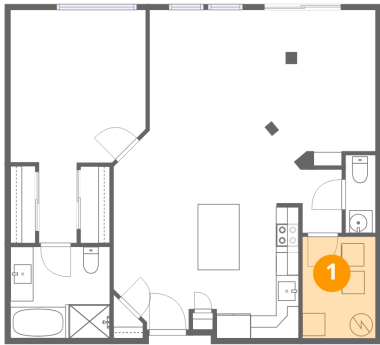
Room dimensions

Floor 1 Total:913sqft Excluded: 0sqft

#		Dimensions	sqft	Counted as living area
1	Utility	6'5" x 8'10"	57 sq. ft	Yes
2	Office	10'0" x 13'7"	137 sq. ft	Yes
3	Bedroom	11'10" x 20'5"	241 sq. ft	Yes
4	Foyer	6'7" x 11'1"	73 sq. ft	Yes
5	Bath	8'8" x 8'0"	69 sq. ft	Yes
6	Kitchen	9'7" x 11'10"	113 sq. ft	Yes
7	Bath	2'7" x 6'10"	18 sq. ft	Yes
8	Living Room	16'6" x 16'11"	279 sq. ft	Yes
9	Hall	3'5" x 5'6"	19 sq. ft	Yes

10184 Park Meadows Drive, Lone Tree, Douglas County,
Colorado, United States, 80124, 1404

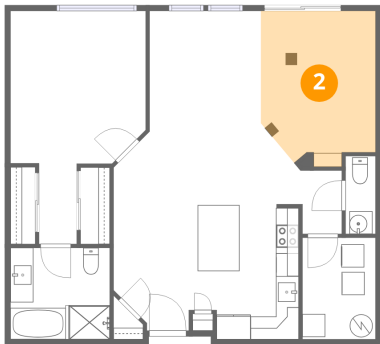
1 Floor 1 - Utility



Dimensions: 6'5" x 8'10"
Area: 57 sq. ft
Counted as living area: Yes

Heated: Yes
Finished: Yes
Enclosed: Yes
Contiguous: Yes
Permitted: Yes
Wet space: No
Addition: No
Conversion: No

2 Floor 1 - Office



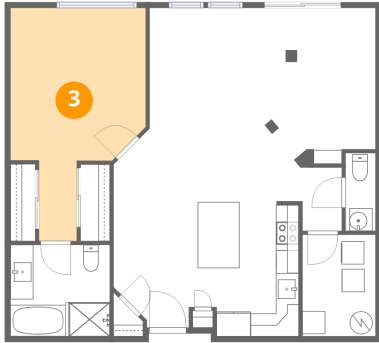
Dimensions: 10'0" x 13'7"
Area: 137 sq. ft
Counted as living area: Yes

Heated: Yes
Finished: Yes
Enclosed: Yes
Contiguous: Yes
Permitted: Yes
Wet space: No
Addition: No
Conversion: No

Home data report

10184 Park Meadows Drive, Lone Tree, Douglas County,
Colorado, United States, 80124, 1404

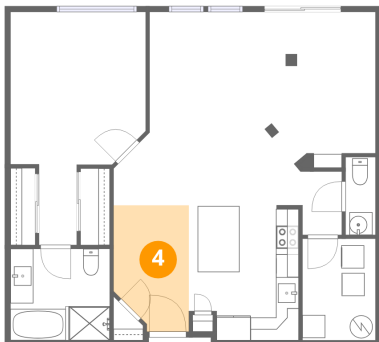
3 Floor 1 - Bedroom



Dimensions: 11'10" x 20'5"
Area: 241 sq. ft
Counted as living area: Yes

Heated: Yes
Finished: Yes
Enclosed: Yes
Contiguous: Yes
Permitted: Yes
Wet space: No
Addition: No
Conversion: No

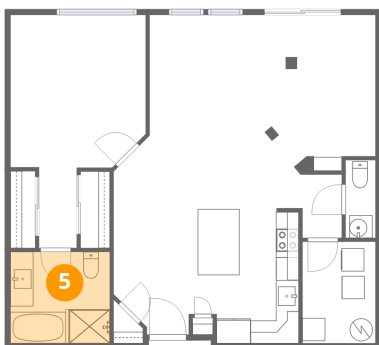
4 Floor 1 - Foyer



Dimensions: 6'7" x 11'1"
Area: 73 sq. ft
Counted as living area: Yes

Heated: Yes
Finished: Yes
Enclosed: Yes
Contiguous: Yes
Permitted: Yes
Wet space: No
Addition: No
Conversion: No

5 Floor 1 - Bath

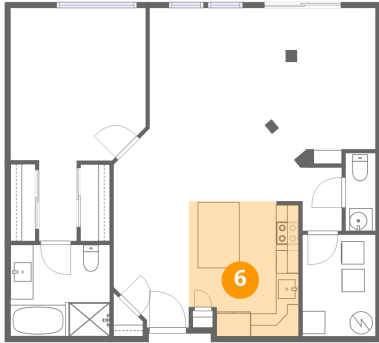


Dimensions: 8'8" x 8'0"
Area: 69 sq. ft
Counted as living area: Yes

Heated: Yes
Finished: Yes
Enclosed: Yes
Contiguous: Yes
Permitted: Yes
Wet space: Yes
Addition: No
Conversion: No

10184 Park Meadows Drive, Lone Tree, Douglas County,
Colorado, United States, 80124, 1404

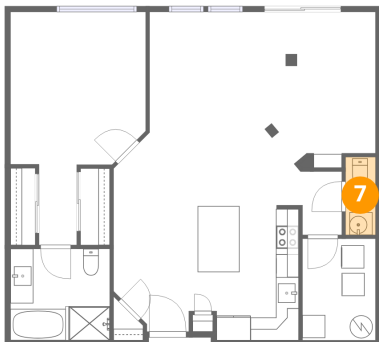
6 Floor 1 - Kitchen



Dimensions: 9'7" x 11'10"
Area: 113 sq. ft
Counted as living area: Yes

Heated: Yes
Finished: Yes
Enclosed: Yes
Contiguous: Yes
Permitted: Yes
Wet space: No
Addition: No
Conversion: No

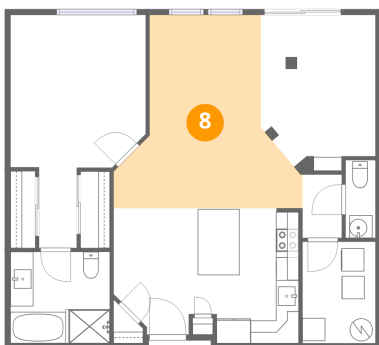
7 Floor 1 - Bath



Dimensions: 2'7" x 6'10"
Area: 18 sq. ft
Counted as living area: Yes

Heated: Yes
Finished: Yes
Enclosed: Yes
Contiguous: Yes
Permitted: Yes
Wet space: Yes
Addition: No
Conversion: No

8 Floor 1 - Living Room

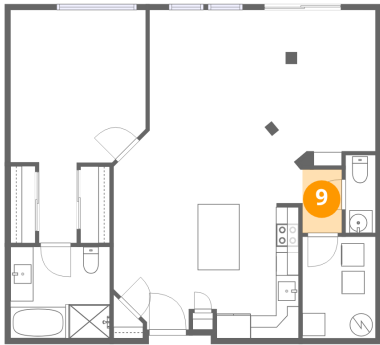


Dimensions: 16'6" x 16'11"
Area: 279 sq. ft
Counted as living area: Yes

Heated: Yes
Finished: Yes
Enclosed: Yes
Contiguous: Yes
Permitted: Yes
Wet space: No
Addition: No
Conversion: No

10184 Park Meadows Drive, Lone Tree, Douglas County,
Colorado, United States, 80124, 1404

9 Floor 1 - Hall



Dimensions: 3'5" x 5'6"
Area: 19 sq. ft
Counted as living area: Yes

Heated: Yes
Finished: Yes
Enclosed: Yes
Contiguous: Yes
Permitted: Yes
Wet space: No
Addition: No
Conversion: No