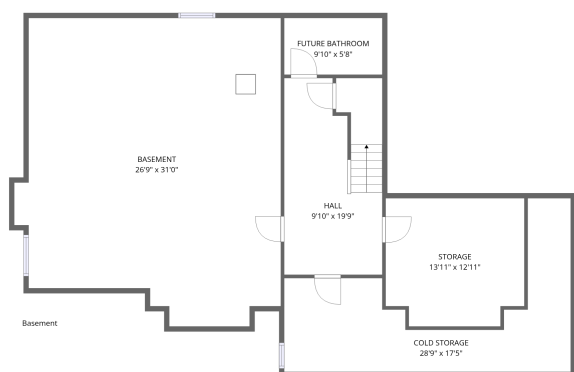
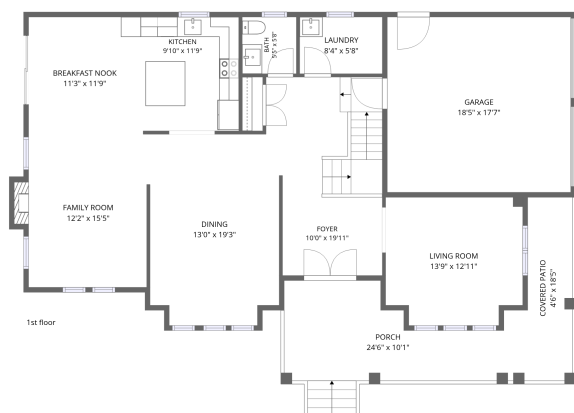


Home data report

**63 Wood Crescent, Angus, Simcoe County, Ontario, Canada,
L0M 1B5**



Total Area: 2785 sq. ft

Basement: 211 sq. ft, 1st Floor: 1167 sq. ft, 2nd Floor: 1407 sq. ft

Excluded: Cold storage 251 sq. ft, Storage 170 sq. ft, Basement 736 sq. ft, Future bathroom 56 sq. ft, Garage 324 sq. ft, Porch 199 sq. ft, Covered patio 83 sq. ft, Fireplace 8 sq. ft, Open to below 87 sq. ft, Walls: 289 sq. ft

Property summary



Home data report

**63 Wood Crescent, Angus, Simcoe County, Ontario, Canada,
L0M 1B5**



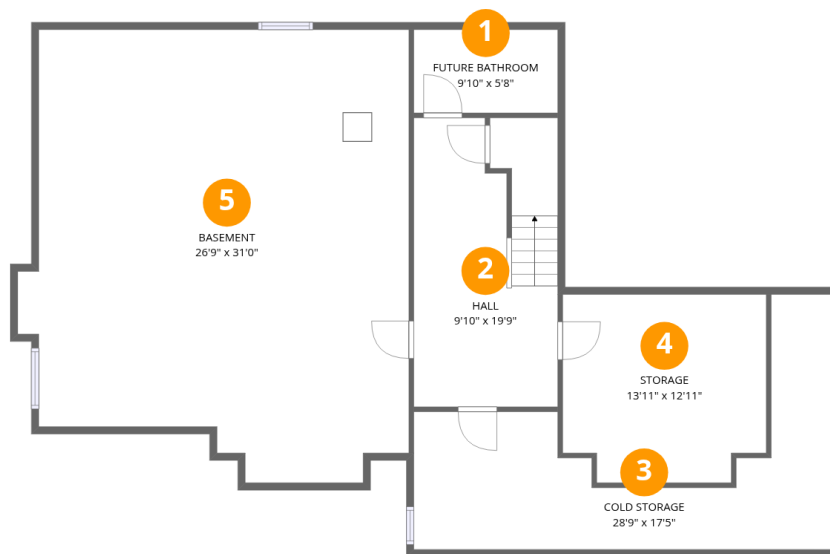
1
Half baths



1
Garages

Home data report

63 Wood Crescent, Angus, Simcoe County, Ontario, Canada, L0M 1B5



Room dimensions

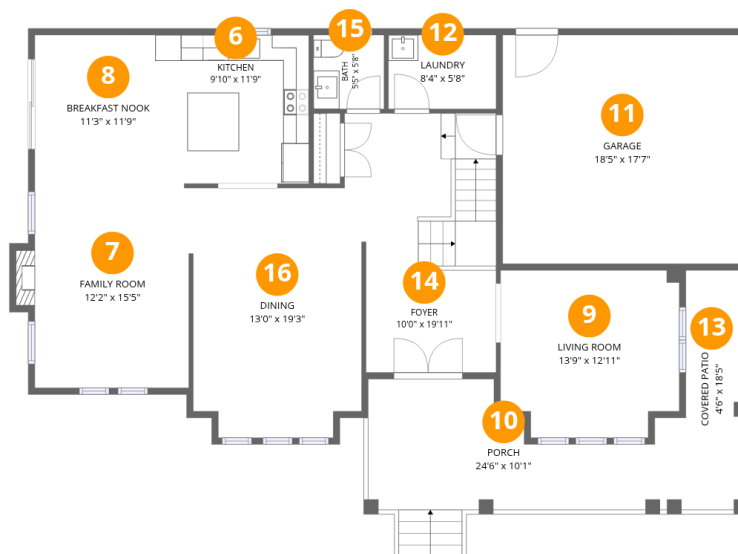
Floor 1 Below grade

Total:211sqft

Excluded: 1213sqft

#		Dimensions	sqft	Counted as living area
1	Future Bathroom	9'10" x 5'8"	56 sq. ft	No
2	Hall	9'10" x 19'9"	192 sq. ft	Yes
3	Cold Storage	28'9" x 17'5"	240 sq. ft	No
4	Storage	13'11" x 12'11"	170 sq. ft	No
5	Basement	26'9" x 31'0"	734 sq. ft	No

**63 Wood Crescent, Angus, Simcoe County, Ontario, Canada,
L0M 1B5**



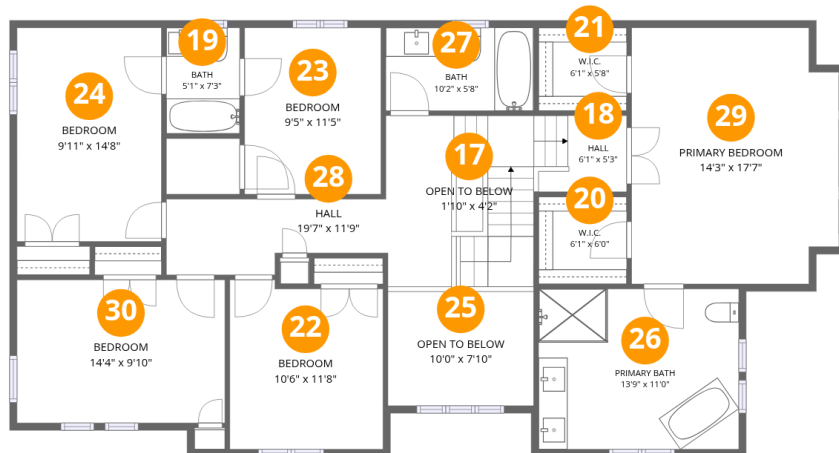
Room dimensions

Floor 2

Total:1167sqft Excluded: 614sqft

#		Dimensions	sqft	Counted as living area
6	Kitchen	9'10" x 11'9"	113 sq. ft	Yes
7	Family Room	12'2" x 15'5"	190 sq. ft	Yes
8	Breakfast Nook	11'3" x 11'9"	133 sq. ft	Yes
9	Living Room	13'9" x 12'11"	168 sq. ft	Yes
10	Porch	24'6" x 10'1"	199 sq. ft	No
11	Garage	18'5" x 17'7"	324 sq. ft	No
12	Laundry	8'4" x 5'8"	47 sq. ft	Yes
13	Covered Patio	4'6" x 18'5"	83 sq. ft	No
14	Foyer	10'0" x 19'11"	211 sq. ft	Yes
15	Bath	5'5" x 5'8"	31 sq. ft	Yes
16	Dining	13'0" x 19'3"	241 sq. ft	Yes

63 Wood Crescent, Angus, Simcoe County, Ontario, Canada, L0M 1B5



Room dimensions

Floor 3

Total:1407sqft Excluded: 87sqft

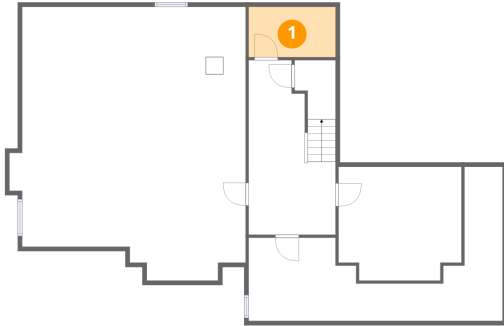
#		Dimensions	sqft	Counted as living area
17	Open To Below	1'10" x 4'2"	8 sq. ft	No
18	Hall	6'1" x 5'3"	90 sq. ft	Yes
19	Bath	5'1" x 7'3"	37 sq. ft	Yes
20	W.I.C.	6'1" x 6'0"	36 sq. ft	Yes
21	W.I.C.	6'1" x 5'8"	35 sq. ft	Yes
22	Bedroom	10'6" x 11'8"	118 sq. ft	Yes
23	Bedroom	9'5" x 11'5"	107 sq. ft	Yes
24	Bedroom	9'11" x 14'8"	146 sq. ft	Yes
25	Open To Below	10'0" x 7'10"	79 sq. ft	No
26	Primary Bath	13'9" x 11'0"	152 sq. ft	Yes
27	Bath	10'2" x 5'8"	58 sq. ft	Yes

Home data report

**63 Wood Crescent, Angus, Simcoe County, Ontario, Canada,
L0M 1B5**

#		Dimensions	sqft	Counted as living area
28	Hall	19'7" x 11'9"	125 sq. ft	Yes
29	Primary Bedroom	14'3" x 17'7"	240 sq. ft	Yes
30	Bedroom	14'4" x 9'10"	141 sq. ft	Yes

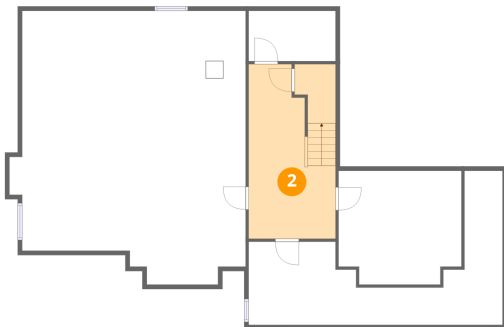
1 Floor 1 - Future Bathroom



Dimensions: 9'10" x 5'8"
Area: 56 sq. ft
Counted as living area: No

Heated: Yes
Finished: No
Enclosed: Yes
Contiguous: Yes
Permitted: Yes
Wet space: No
Addition: No
Conversion: No

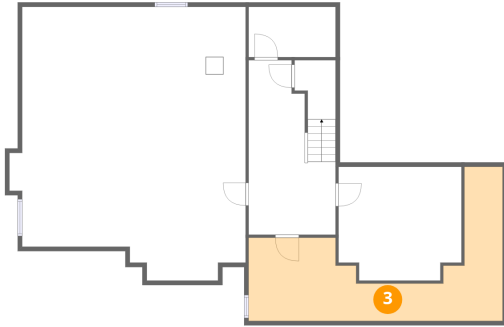
2 Floor 1 - Hall



Dimensions: 9'10" x 19'9"
Area: 192 sq. ft
Counted as living area: No

Heated: Yes
Finished: Yes
Enclosed: Yes
Contiguous: No
Permitted: Yes
Wet space: No
Addition: No
Conversion: No

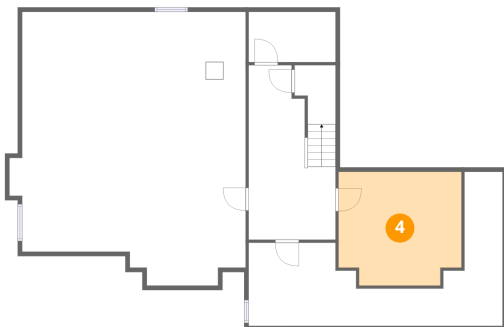
3 Floor 1 - Cold Storage



Dimensions: 28'9" x 17'5"
Area: 240 sq. ft
Counted as living area: No

Heated: No
Finished: No
Enclosed: No
Contiguous: No
Permitted: Yes
Wet space: No
Addition: No
Conversion: No

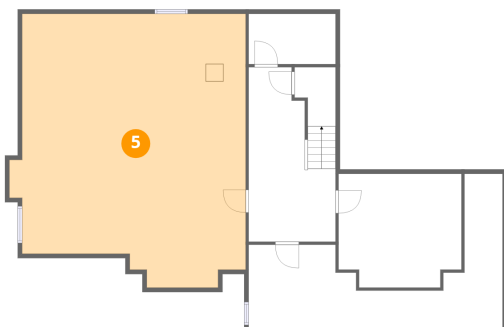
4 Floor 1 - Storage



Dimensions: 13'11" x 12'11"
Area: 170 sq. ft
Counted as living area: No

Heated: No
Finished: No
Enclosed: No
Contiguous: No
Permitted: Yes
Wet space: No
Addition: No
Conversion: No

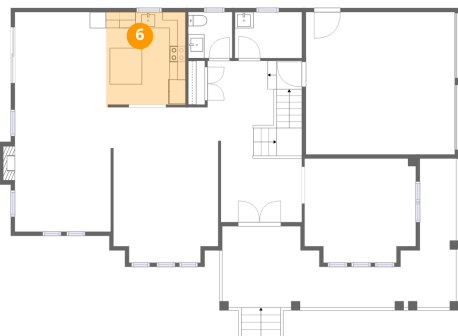
5 Floor 1 - Basement



Dimensions: 26'9" x 31'0"
Area: 734 sq. ft
Counted as living area: No

Heated: Yes
Finished: No
Enclosed: Yes
Contiguous: Yes
Permitted: Yes
Wet space: No
Addition: No
Conversion: No

6 Floor 2 - Kitchen



Dimensions: 9'10" x 11'9"
Area: 113 sq. ft
Counted as living area: Yes

Heated: Yes
Finished: Yes
Enclosed: Yes
Contiguous: Yes
Permitted: Yes
Wet space: No
Addition: No
Conversion: No

7 Floor 2 - Family Room



Dimensions: 12'2" x 15'5"
Area: 190 sq. ft
Counted as living area: Yes

Heated: Yes
Finished: Yes
Enclosed: Yes
Contiguous: Yes
Permitted: Yes
Wet space: No
Addition: No
Conversion: No

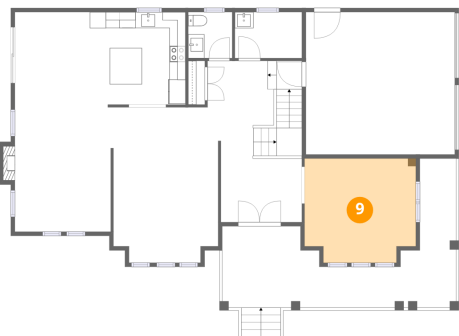
8 Floor 2 - Breakfast Nook



Dimensions: 11'3" x 11'9"
Area: 133 sq. ft
Counted as living area: Yes

Heated: Yes
Finished: Yes
Enclosed: Yes
Contiguous: Yes
Permitted: Yes
Wet space: No
Addition: No
Conversion: No

9 Floor 2 - Living Room



Dimensions: 13'9" x 12'11"
Area: 168 sq. ft
Counted as living area: Yes

Heated: Yes
Finished: Yes
Enclosed: Yes
Contiguous: Yes
Permitted: Yes
Wet space: No
Addition: No
Conversion: No

10 Floor 2 - Porch



Dimensions: 24'6" x 10'1"
Area: 199 sq. ft
Counted as living area: No

Heated: No
Finished: No
Enclosed: No
Contiguous: Yes
Permitted: Yes
Wet space: No
Addition: No
Conversion: No

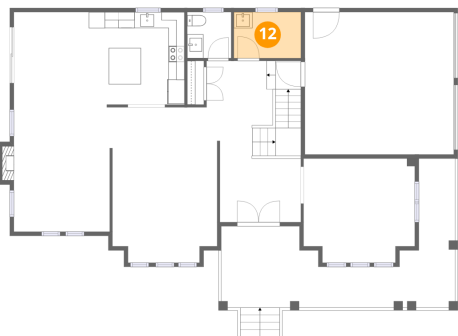
11 Floor 2 - Garage



Dimensions: 18'5" x 17'7"
Area: 324 sq. ft
Counted as living area: No

Heated: No
Finished: No
Enclosed: Yes
Contiguous: Yes
Permitted: Yes
Wet space: No
Addition: No
Conversion: No

12 Floor 2 - Laundry



Dimensions: 8'4" x 5'8"
Area: 47 sq. ft
Counted as living area: Yes

Heated: Yes
Finished: Yes
Enclosed: Yes
Contiguous: Yes
Permitted: Yes
Wet space: No
Addition: No
Conversion: No

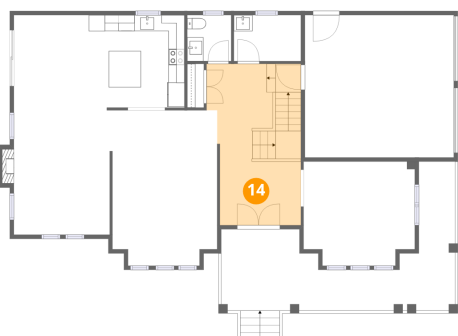
13 Floor 2 - Covered Patio



Dimensions: 4'6" x 18'5"
Area: 83 sq. ft
Counted as living area: No

Heated: No
Finished: No
Enclosed: No
Contiguous: Yes
Permitted: Yes
Wet space: No
Addition: No
Conversion: No

14 Floor 2 - Foyer



Dimensions: 10'0" x 19'11"
Area: 211 sq. ft
Counted as living area: Yes

Heated: Yes
Finished: Yes
Enclosed: Yes
Contiguous: Yes
Permitted: Yes
Wet space: No
Addition: No
Conversion: No

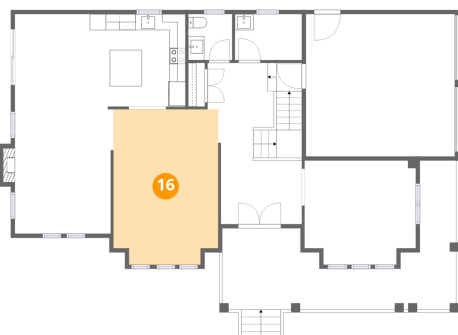
15 Floor 2 - Bath



Dimensions: 5'5" x 5'8"
Area: 31 sq. ft
Counted as living area: Yes

Heated: Yes
Finished: Yes
Enclosed: Yes
Contiguous: Yes
Permitted: Yes
Wet space: Yes
Addition: No
Conversion: No

16 Floor 2 - Dining



Dimensions: 13'0" x 19'3"
Area: 241 sq. ft
Counted as living area: Yes

Heated: Yes
Finished: Yes
Enclosed: Yes
Contiguous: Yes
Permitted: Yes
Wet space: No
Addition: No
Conversion: No

17 Floor 3 - Open To Below



Dimensions: 1'10" x 4'2"
Area: 8 sq. ft
Counted as living area: No

Heated: No
Finished: No
Enclosed: No
Contiguous: Yes
Permitted: No
Wet space: No
Addition: No
Conversion: No

18 Floor 3 - Hall



Dimensions: 6'1" x 5'3"
Area: 90 sq. ft
Counted as living area: Yes

Heated: Yes
Finished: Yes
Enclosed: Yes
Contiguous: Yes
Permitted: Yes
Wet space: No
Addition: No
Conversion: No

19 Floor 3 - Bath



Dimensions: 5'1" x 7'3"
Area: 37 sq. ft
Counted as living area: Yes

Heated: Yes
Finished: Yes
Enclosed: Yes
Contiguous: Yes
Permitted: Yes
Wet space: Yes
Addition: No
Conversion: No

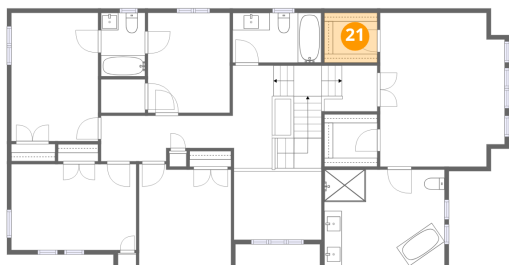
20 Floor 3 - W.I.C.



Dimensions: 6'1" x 6'0"
Area: 36 sq. ft
Counted as living area: Yes

Heated: Yes
Finished: Yes
Enclosed: Yes
Contiguous: Yes
Permitted: Yes
Wet space: No
Addition: No
Conversion: No

21 Floor 3 - W.I.C.



Dimensions: 6'1" x 5'8"
Area: 35 sq. ft
Counted as living area: Yes

Heated: Yes
Finished: Yes
Enclosed: Yes
Contiguous: Yes
Permitted: Yes
Wet space: No
Addition: No
Conversion: No

22 Floor 3 - Bedroom



Dimensions: 10'6" x 11'8"
Area: 118 sq. ft
Counted as living area: Yes

Heated: Yes
Finished: Yes
Enclosed: Yes
Contiguous: Yes
Permitted: Yes
Wet space: No
Addition: No
Conversion: No

23 Floor 3 - Bedroom



Dimensions: 9'5" x 11'5"
Area: 107 sq. ft
Counted as living area: Yes

Heated: Yes
Finished: Yes
Enclosed: Yes
Contiguous: Yes
Permitted: Yes
Wet space: No
Addition: No
Conversion: No

24 Floor 3 - Bedroom



Dimensions: 9'11" x 14'8"
Area: 146 sq. ft
Counted as living area: Yes

Heated: Yes
Finished: Yes
Enclosed: Yes
Contiguous: Yes
Permitted: Yes
Wet space: No
Addition: No
Conversion: No

25 Floor 3 - Open To Below



Dimensions: 10'0" x 7'10"
Area: 79 sq. ft
Counted as living area: No

Heated: No
Finished: No
Enclosed: No
Contiguous: Yes
Permitted: No
Wet space: No
Addition: No
Conversion: No

26 Floor 3 - Primary Bath



Dimensions: 13'9" x 11'0"
Area: 152 sq. ft
Counted as living area: Yes

Heated: Yes
Finished: Yes
Enclosed: Yes
Contiguous: Yes
Permitted: Yes
Wet space: Yes
Addition: No
Conversion: No

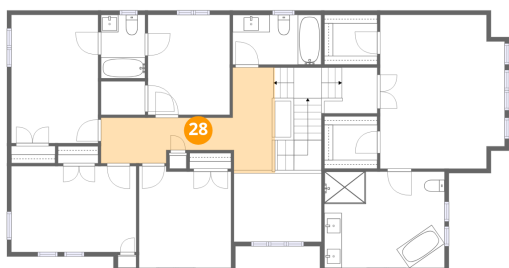
27 Floor 3 - Bath



Dimensions: 10'2" x 5'8"
Area: 58 sq. ft
Counted as living area: Yes

Heated: Yes
Finished: Yes
Enclosed: Yes
Contiguous: Yes
Permitted: Yes
Wet space: Yes
Addition: No
Conversion: No

28 Floor 3 - Hall



Dimensions: 19'7" x 11'9"
Area: 125 sq. ft
Counted as living area: Yes

Heated: Yes
Finished: Yes
Enclosed: Yes
Contiguous: Yes
Permitted: Yes
Wet space: No
Addition: No
Conversion: No

29 Floor 3 - Primary Bedroom



Dimensions: 14'3" x 17'7"
Area: 240 sq. ft
Counted as living area: Yes

Heated: Yes
Finished: Yes
Enclosed: Yes
Contiguous: Yes
Permitted: Yes
Wet space: No
Addition: No
Conversion: No

30 Floor 3 - Bedroom



Dimensions: 14'4" x 9'10"
Area: 141 sq. ft
Counted as living area: Yes

Heated: Yes
Finished: Yes
Enclosed: Yes
Contiguous: Yes
Permitted: Yes
Wet space: No
Addition: No
Conversion: No