

# 101 Radford Ct, Stephens City, VA, US



**Total Area: 4848 sq. ft**

1st Floor: 1418 sq. ft, 2nd Floor: 1781 sq. ft, 3rd Floor: 1649 sq. ft


Excluded: Storage 205 sq. ft, Garage 417 sq. ft, Deck 335 sq. ft, Patio 367 sq. ft, Open to below 99 sq. ft, Walls: 319 sq. ft

## Property summary

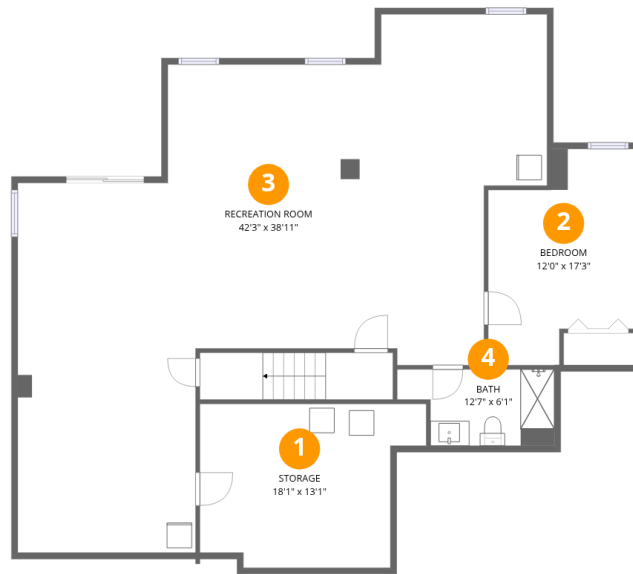


Home data report

# 101 Radford Ct, Stephens City, VA, US

 **1**  
Half baths

 **1**  
Garages



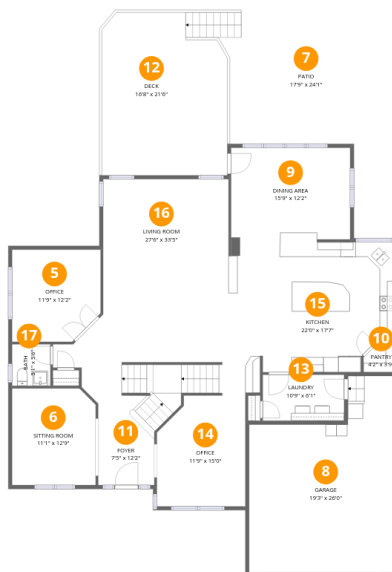
## Room dimensions

Floor 1

Total:1418sqft

Excluded: 205sqft

#		Dimensions	sqft	Counted as living area
1	Storage	18'1" x 13'1"	236 sq. ft	No
2	Bedroom	12'0" x 17'3"	206 sq. ft	Yes
3	Recreation Room	42'3" x 38'11"	1643 sq. ft	Yes
4	Bath	12'7" x 6'1"	77 sq. ft	Yes



## Room dimensions

Floor 2

Total:1781sqft

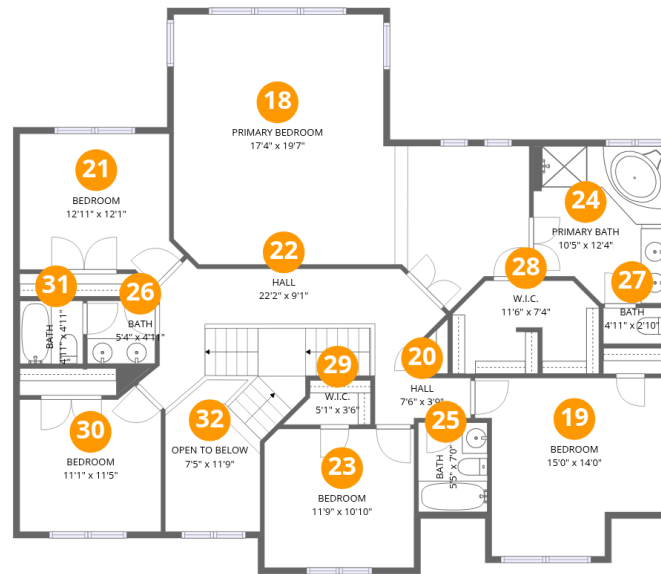
Excluded: 1119sqft

#		Dimensions	sqft	Counted as living area
5	Office	11'9" x 12'2"	143 sq. ft	Yes
6	Sitting Room	11'1" x 12'9"	142 sq. ft	Yes
7	Patio	17'9" x 24'1"	428 sq. ft	No
8	Garage	19'3" x 26'0"	502 sq. ft	No
9	Dining Area	15'9" x 12'2"	191 sq. ft	Yes
10	Pantry	4'2" x 3'9"	16 sq. ft	Yes
11	Foyer	7'5" x 12'2"	91 sq. ft	Yes
12	Deck	16'8" x 21'6"	358 sq. ft	No
13	Laundry	10'9" x 6'1"	66 sq. ft	Yes
14	Office	11'9" x 15'0"	177 sq. ft	Yes
15	Kitchen	22'0" x 17'7"	386 sq. ft	Yes

Home data report

**101 Radford Ct, Stephens City, VA, US**

#		Dimensions	sqft	Counted as living area
16	Living Room	27'6" x 33'5"	919 sq. ft	Yes
17	Bath	5'1" x 5'6"	28 sq. ft	Yes



## Room dimensions

Floor 3

Total: 1649 sqft

Excluded: 99 sqft

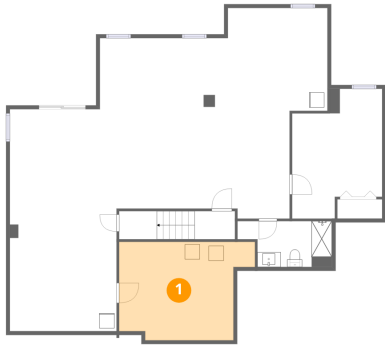
#		Dimensions	sqft	Counted as living area
18	Primary Bedroom	17'4" x 19'7"	340 sq. ft	Yes
19	Bedroom	15'0" x 14'0"	209 sq. ft	Yes
20	Hall	7'6" x 3'9"	28 sq. ft	Yes
21	Bedroom	12'11" x 12'1"	156 sq. ft	Yes
22	Hall	22'2" x 9'1"	202 sq. ft	Yes
23	Bedroom	11'9" x 10'10"	128 sq. ft	Yes
24	Primary Bath	10'5" x 12'4"	128 sq. ft	Yes
25	Bath	5'5" x 7'0"	38 sq. ft	Yes
26	Bath	5'4" x 4'11"	26 sq. ft	Yes
27	Bath	4'11" x 2'10"	14 sq. ft	Yes
28	W.I.C.	11'6" x 7'4"	84 sq. ft	Yes

Home data report

**101 Radford Ct, Stephens City, VA, US**

#		Dimensions	sqft	Counted as living area
29	W.I.C.	5'1" x 3'6"	18 sq. ft	Yes
30	Bedroom	11'1" x 11'5"	126 sq. ft	Yes
31	Bath	4'11" x 4'11"	24 sq. ft	Yes
32	Open To Below	7'5" x 11'9"	87 sq. ft	No

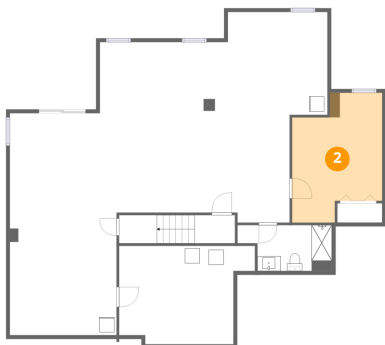
## 1 Floor 1 - Storage



Dimensions: 18'1" x 13'1"  
Area: 236 sq. ft  
Counted as living area: No

Heated: No  
Finished: No  
Enclosed: No  
Contiguous: Yes  
Permitted: Yes  
Wet space: No  
Addition: No  
Conversion: No

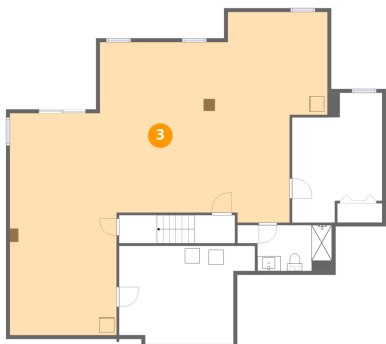
## 2 Floor 1 - Bedroom



Dimensions: 12'0" x 17'3"  
Area: 206 sq. ft  
Counted as living area: Yes

Heated: Yes  
Finished: Yes  
Enclosed: Yes  
Contiguous: Yes  
Permitted: Yes  
Wet space: No  
Addition: No  
Conversion: No

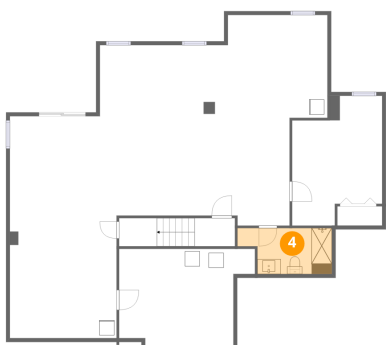
### 3 Floor 1 - Recreation Room



Dimensions: 42'3" x 38'11"  
Area: 1643 sq. ft  
Counted as living area: Yes

Heated: Yes  
Finished: Yes  
Enclosed: Yes  
Contiguous: Yes  
Permitted: Yes  
Wet space: No  
Addition: No  
Conversion: No

### 4 Floor 1 - Bath



Dimensions: 12'7" x 6'1"  
Area: 77 sq. ft  
Counted as living area: Yes

Heated: Yes  
Finished: Yes  
Enclosed: Yes  
Contiguous: Yes  
Permitted: Yes  
Wet space: Yes  
Addition: No  
Conversion: No

### 5 Floor 2 - Office



Dimensions: 11'9" x 12'2"  
Area: 143 sq. ft  
Counted as living area: Yes

Heated: Yes  
Finished: Yes  
Enclosed: Yes  
Contiguous: Yes  
Permitted: Yes  
Wet space: No  
Addition: No  
Conversion: No

## 6 Floor 2 - Sitting Room



Dimensions: 11'1" x 12'9"  
Area: 142 sq. ft  
Counted as living area: Yes

Heated: Yes  
Finished: Yes  
Enclosed: Yes  
Contiguous: Yes  
Permitted: Yes  
Wet space: No  
Addition: No  
Conversion: No

## 7 Floor 2 - Patio



Dimensions: 17'9" x 24'1"  
Area: 428 sq. ft  
Counted as living area: No

Heated: No  
Finished: No  
Enclosed: No  
Contiguous: Yes  
Permitted: Yes  
Wet space: No  
Addition: No  
Conversion: No

## 8 Floor 2 - Garage



Dimensions: 19'3" x 26'0"  
Area: 502 sq. ft  
Counted as living area: No

Heated: No  
Finished: No  
Enclosed: Yes  
Contiguous: Yes  
Permitted: Yes  
Wet space: No  
Addition: No  
Conversion: No

## 9 Floor 2 - Dining Area



Dimensions: 15'9" x 12'2"  
Area: 191 sq. ft  
Counted as living area: Yes

Heated: Yes  
Finished: Yes  
Enclosed: Yes  
Contiguous: Yes  
Permitted: Yes  
Wet space: No  
Addition: No  
Conversion: No

## 10 Floor 2 - Pantry



Dimensions: 4'2" x 3'9"  
Area: 16 sq. ft  
Counted as living area: Yes

Heated: Yes  
Finished: Yes  
Enclosed: Yes  
Contiguous: Yes  
Permitted: Yes  
Wet space: No  
Addition: No  
Conversion: No

## 11 Floor 2 - Foyer



Dimensions: 7'5" x 12'2"  
Area: 91 sq. ft  
Counted as living area: Yes

Heated: Yes  
Finished: Yes  
Enclosed: Yes  
Contiguous: Yes  
Permitted: Yes  
Wet space: No  
Addition: No  
Conversion: No

## 12 Floor 2 - Deck



Dimensions: 16'8" x 21'6"  
Area: 358 sq. ft  
Counted as living area: No

Heated: No  
Finished: No  
Enclosed: No  
Contiguous: Yes  
Permitted: Yes  
Wet space: No  
Addition: No  
Conversion: No

## 13 Floor 2 - Laundry



Dimensions: 10'9" x 6'1"  
Area: 66 sq. ft  
Counted as living area: Yes

Heated: Yes  
Finished: Yes  
Enclosed: Yes  
Contiguous: Yes  
Permitted: Yes  
Wet space: No  
Addition: No  
Conversion: No

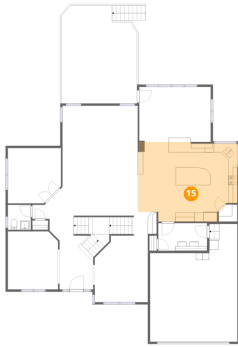
## 14 Floor 2 - Office



Dimensions: 11'9" x 15'0"  
Area: 177 sq. ft  
Counted as living area: Yes

Heated: Yes  
Finished: Yes  
Enclosed: Yes  
Contiguous: Yes  
Permitted: Yes  
Wet space: No  
Addition: No  
Conversion: No

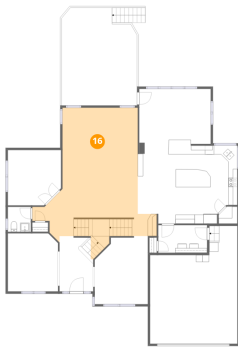
**15** Floor 2 - Kitchen



Dimensions: 22'0" x 17'7"  
Area: 386 sq. ft  
Counted as living area: Yes

Heated: Yes  
Finished: Yes  
Enclosed: Yes  
Contiguous: Yes  
Permitted: Yes  
Wet space: No  
Addition: No  
Conversion: No

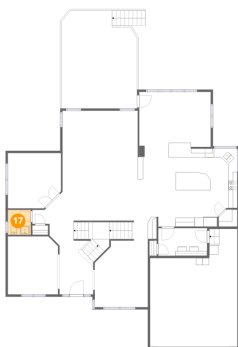
**16** Floor 2 - Living Room



Dimensions: 27'6" x 33'5"  
Area: 919 sq. ft  
Counted as living area: Yes

Heated: Yes  
Finished: Yes  
Enclosed: Yes  
Contiguous: Yes  
Permitted: Yes  
Wet space: No  
Addition: No  
Conversion: No

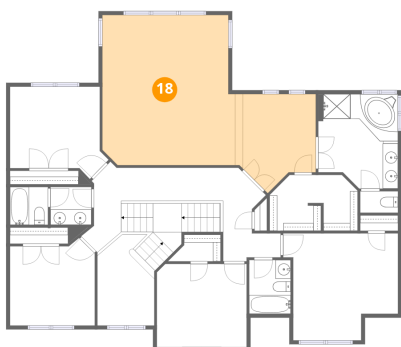
**17** Floor 2 - Bath



Dimensions: 5'1" x 5'6"  
Area: 28 sq. ft  
Counted as living area: Yes

Heated: Yes  
Finished: Yes  
Enclosed: Yes  
Contiguous: Yes  
Permitted: Yes  
Wet space: Yes  
Addition: No  
Conversion: No

### 18 Floor 3 - Primary Bedroom



Dimensions: 17'4" x 19'7"  
Area: 340 sq. ft  
Counted as living area: Yes

Heated: Yes  
Finished: Yes  
Enclosed: Yes  
Contiguous: Yes  
Permitted: Yes  
Wet space: No  
Addition: No  
Conversion: No

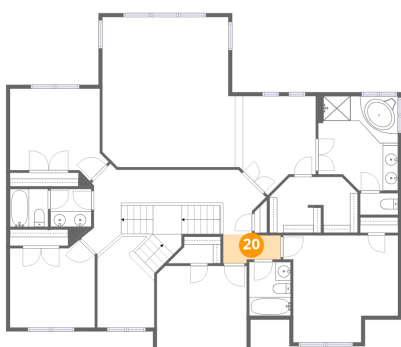
### 19 Floor 3 - Bedroom



Dimensions: 15'0" x 14'0"  
Area: 209 sq. ft  
Counted as living area: Yes

Heated: Yes  
Finished: Yes  
Enclosed: Yes  
Contiguous: Yes  
Permitted: Yes  
Wet space: No  
Addition: No  
Conversion: No

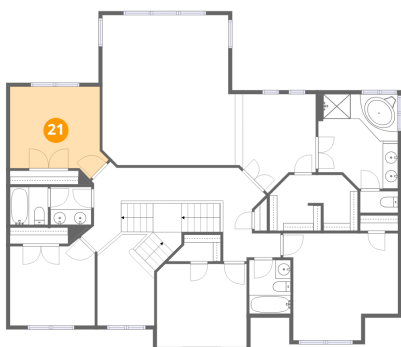
### 20 Floor 3 - Hall



Dimensions: 7'6" x 3'9"  
Area: 28 sq. ft  
Counted as living area: Yes

Heated: Yes  
Finished: Yes  
Enclosed: Yes  
Contiguous: Yes  
Permitted: Yes  
Wet space: No  
Addition: No  
Conversion: No

### 21 Floor 3 - Bedroom



Dimensions: 12'11" x 12'1"  
Area: 156 sq. ft  
Counted as living area: Yes

Heated: Yes  
Finished: Yes  
Enclosed: Yes  
Contiguous: Yes  
Permitted: Yes  
Wet space: No  
Addition: No  
Conversion: No

### 22 Floor 3 - Hall



Dimensions: 22'2" x 9'1"  
Area: 202 sq. ft  
Counted as living area: Yes

Heated: Yes  
Finished: Yes  
Enclosed: Yes  
Contiguous: Yes  
Permitted: Yes  
Wet space: No  
Addition: No  
Conversion: No

### 23 Floor 3 - Bedroom



Dimensions: 11'9" x 10'10"  
Area: 128 sq. ft  
Counted as living area: Yes

Heated: Yes  
Finished: Yes  
Enclosed: Yes  
Contiguous: Yes  
Permitted: Yes  
Wet space: No  
Addition: No  
Conversion: No

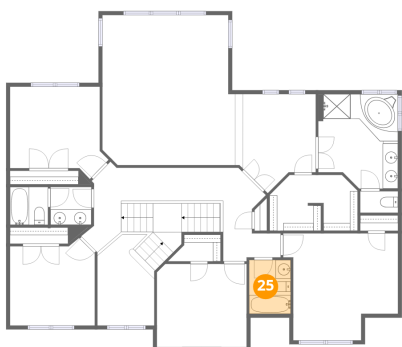
**24** Floor 3 - Primary Bath



Dimensions: 10'5" x 12'4"  
Area: 128 sq. ft  
Counted as living area: Yes

Heated: Yes  
Finished: Yes  
Enclosed: Yes  
Contiguous: Yes  
Permitted: Yes  
Wet space: Yes  
Addition: No  
Conversion: No

**25** Floor 3 - Bath



Dimensions: 5'5" x 7'0"  
Area: 38 sq. ft  
Counted as living area: Yes

Heated: Yes  
Finished: Yes  
Enclosed: Yes  
Contiguous: Yes  
Permitted: Yes  
Wet space: Yes  
Addition: No  
Conversion: No

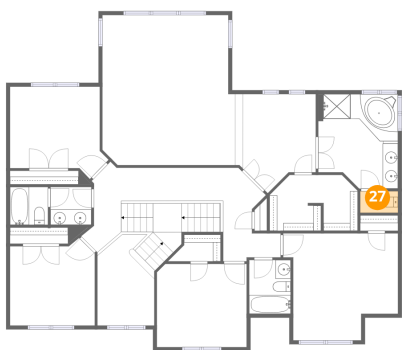
**26** Floor 3 - Bath



Dimensions: 5'4" x 4'11"  
Area: 26 sq. ft  
Counted as living area: Yes

Heated: Yes  
Finished: Yes  
Enclosed: Yes  
Contiguous: Yes  
Permitted: Yes  
Wet space: Yes  
Addition: No  
Conversion: No

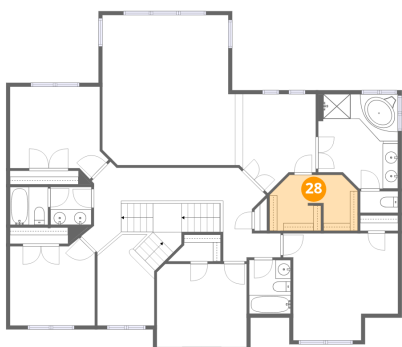
**27** Floor 3 - Bath



Dimensions: 4'11" x 2'10"  
Area: 14 sq. ft  
Counted as living area: Yes

Heated: Yes  
Finished: Yes  
Enclosed: Yes  
Contiguous: Yes  
Permitted: Yes  
Wet space: No  
Addition: No  
Conversion: No

**28** Floor 3 - W.I.C.



Dimensions: 11'6" x 7'4"  
Area: 84 sq. ft  
Counted as living area: Yes

Heated: Yes  
Finished: Yes  
Enclosed: Yes  
Contiguous: Yes  
Permitted: Yes  
Wet space: No  
Addition: No  
Conversion: No

**29** Floor 3 - W.I.C.



Dimensions: 5'1" x 3'6"  
Area: 18 sq. ft  
Counted as living area: Yes

Heated: Yes  
Finished: Yes  
Enclosed: Yes  
Contiguous: Yes  
Permitted: Yes  
Wet space: No  
Addition: No  
Conversion: No

### 30 Floor 3 - Bedroom



Dimensions: 11'1" x 11'5"  
Area: 126 sq. ft  
Counted as living area: Yes

Heated: Yes  
Finished: Yes  
Enclosed: Yes  
Contiguous: Yes  
Permitted: Yes  
Wet space: No  
Addition: No  
Conversion: No

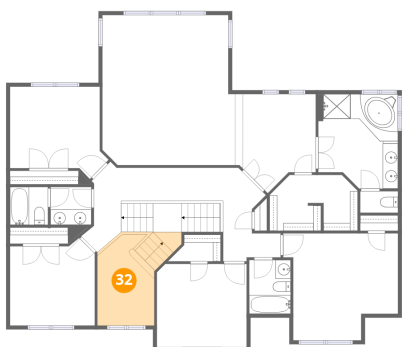
### 31 Floor 3 - Bath



Dimensions: 4'11" x 4'11"  
Area: 24 sq. ft  
Counted as living area: Yes

Heated: Yes  
Finished: Yes  
Enclosed: Yes  
Contiguous: Yes  
Permitted: Yes  
Wet space: Yes  
Addition: No  
Conversion: No

### 32 Floor 3 - Open To Below



Dimensions: 7'5" x 11'9"  
Area: 87 sq. ft  
Counted as living area: No

Heated: No  
Finished: No  
Enclosed: No  
Contiguous: Yes  
Permitted: No  
Wet space: No  
Addition: No  
Conversion: No