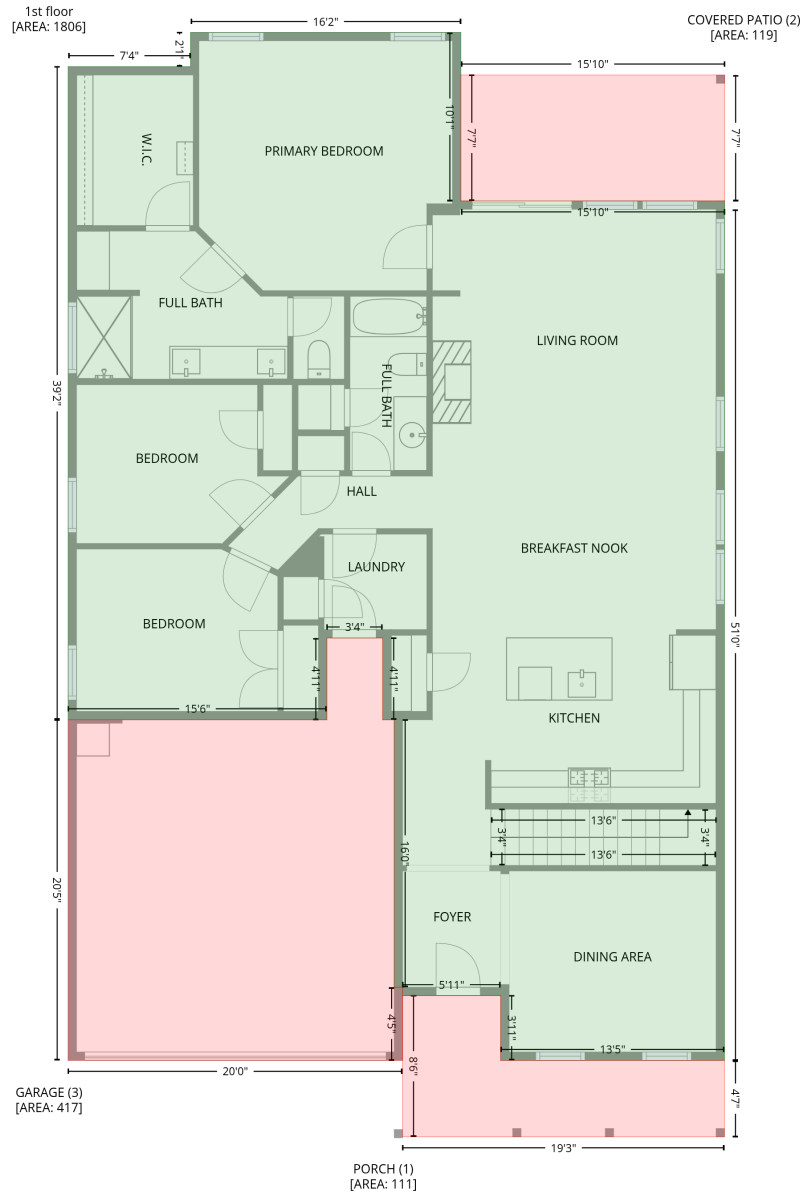


509 Oaks End Drive, Holly Springs, Wake County, North Carolina, United States, 27540

Gross Living Area: 2610 sq. ft

Level 1



Space	Area (sq. ft)	Calculation
1st floor (Living area)	1806	Coordinate Polygon Area Algorithm using inches $-((289.8 + 289.8) * (55.8 - 177.1) + (289.8 + 479.3) * (177.1 - 177.1) + (479.3 + 479.3) * (177.1 - 183.1) + (479.3 + 479.1) * (183.1 - 183.1) + (479.1 + 479.1) * (183.1 - 795.3) + (479.1 + 318.4) * (795.3 - 795.3) + (318.4 + 318.4) * (795.3 - 748.7) + (318.4 + 247.9) * (748.7 - 748.7) + (247.9 + 247.9) * (748.7 - 742.7) + (247.9 + 241.9) * (742.7 - 742.7) + (241.9 + 241.9) * (742.7 - 550.3) + (241.9 + 233.7) * (550.3 - 550.3) + (233.7 + 233.7) * (550.3 - 491.4) + (233.7 + 193.5) * (491.4 - 491.4) + (193.5 + 193.5) * (491.4 - 550.3) + (193.5 + 7.7) * (550.3 - 550.3) + (7.7 + 7.7) * (550.3 - 80.4) + (7.7 + 95.6) * (80.4 - 80.4) + (95.6 + 95.6) * (80.4 - 55.8) + (95.6 + 289.8) * (55.8 - 55.8)) * 0.5 * 0.00694$

509 Oaks End Drive, Holly Springs, Wake County, North Carolina, United States, 27540

Gross Living Area: 2610 sq. ft

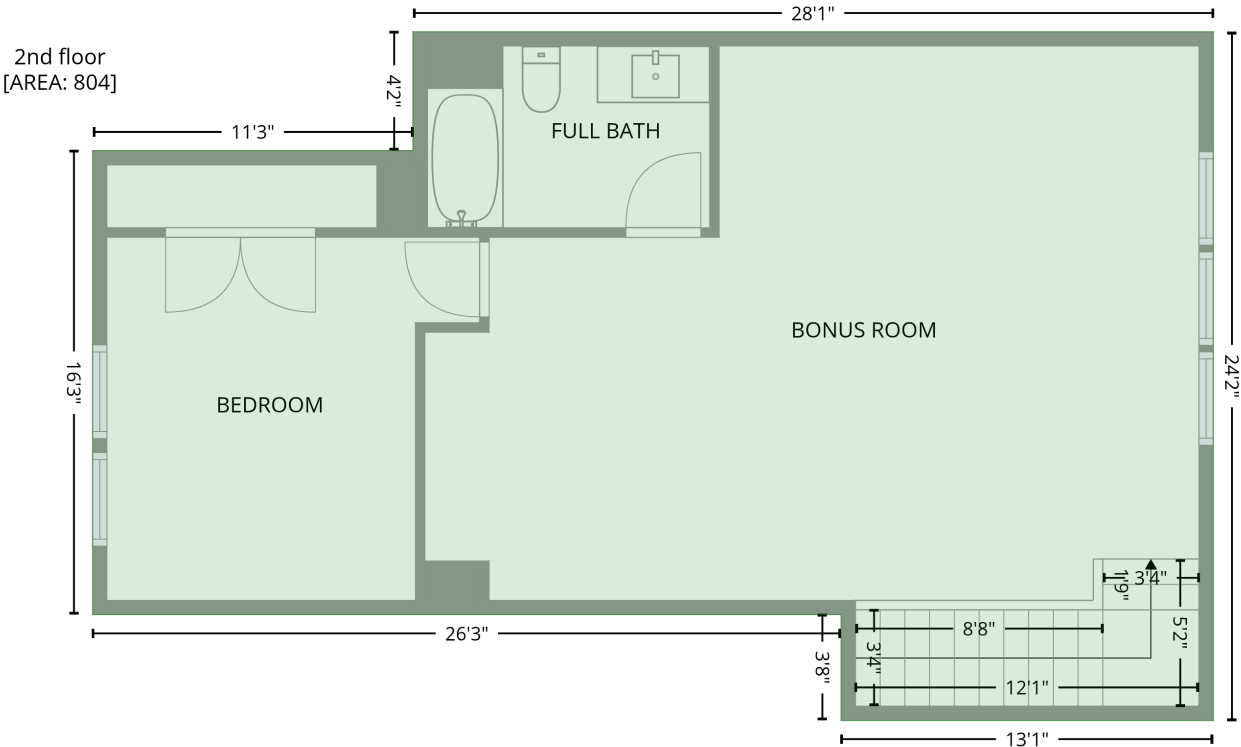
Level 1

Space	Area (sq. ft)	Calculation <small>Coordinate Polygon Area Algorithm using inches</small>
PORCH (Non-living area)	111	$-((318.4 + 318.4) * (748.7 - 795.3) + (318.4 + 479.1) * (795.3 - 795.3) + (479.1 + 479.1) * (795.3 - 850.3) + (479.1 + 247.9) * (850.3 - 850.3) + (247.9 + 247.9) * (850.3 - 748.7) + (247.9 + 318.4) * (748.7 - 748.7)) * 0.5 * 0.00694$
COVERED PATIO (Non-living area)	119	$-((479.3 + 479.3) * (86.4 - 177.1) + (479.3 + 289.8) * (177.1 - 177.1) + (289.8 + 289.8) * (177.1 - 86.4) + (289.8 + 479.3) * (86.4 - 86.4)) * 0.5 * 0.00694$
GARAGE (Non-living area)	417	$-((233.7 + 233.7) * (491.4 - 550.3) + (233.7 + 241.9) * (550.3 - 550.3) + (241.9 + 241.9) * (550.3 - 742.7) + (241.9 + 247.9) * (742.7 - 742.7) + (247.9 + 247.9) * (742.7 - 795.3) + (247.9 + 7.7) * (795.3 - 795.3) + (7.7 + 7.7) * (795.3 - 550.3) + (7.7 + 193.5) * (550.3 - 550.3) + (193.5 + 193.5) * (550.3 - 491.4) + (193.5 + 233.7) * (491.4 - 491.4)) * 0.5 * 0.00694$

509 Oaks End Drive, Holly Springs, Wake County, North Carolina, United States, 27540

Gross Living Area: 2610 sq. ft

Level 2



Space	Area (sq. ft)	Calculation <small>Coordinate Polygon Area Algorithm using inches</small>
2nd floor (Living area)	804	$-\left((479.1 + 479.1) * (371.5 - 661.1) + (479.1 + 322.6) * (661.1 - 661.1) + (322.6 + 322.6) * (661.1 - 616.6) + (322.6 + 7.7) * (616.6 - 616.6) + (7.7 + 7.7) * (616.6 - 421.5) + (7.7 + 142.4) * (421.5 - 421.5) + (142.4 + 142.4) * (421.5 - 371.5) + (142.4 + 479.1) * (371.5 - 371.5)\right) * 0.5 * 0.00694$