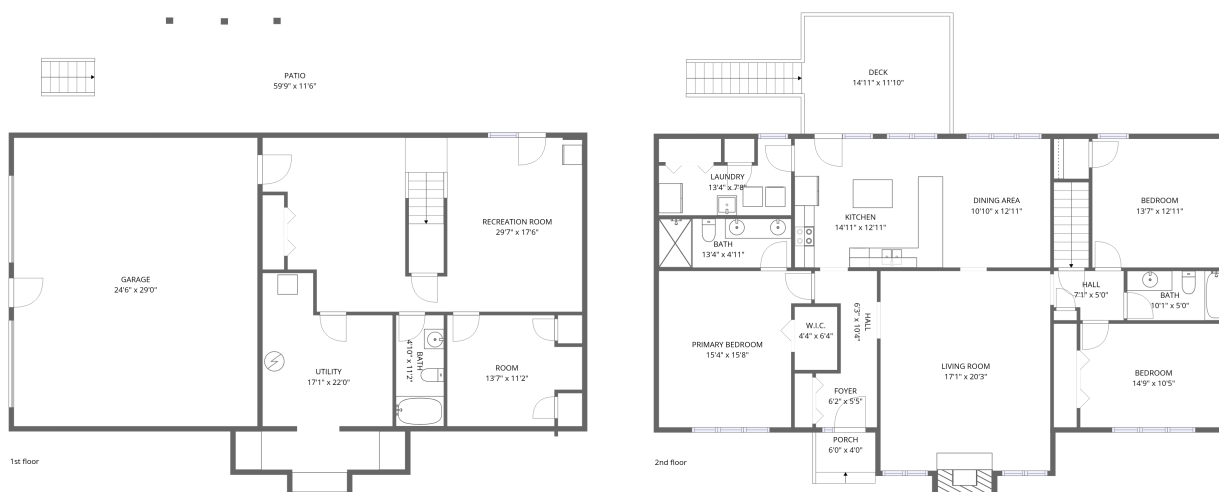


## Home data report

**384 Deer Haven Drive, Roanoke, Botetourt County, Virginia,  
United States, 24012**



**Total Area: 2350 sq. ft**

1st Floor: 614 sq. ft, 2nd Floor: 1736 sq. ft

Excluded: Utility 253 sq. ft, Room 152 sq. ft, Garage 711 sq. ft, Patio 639 sq. ft, Deck 210 sq. ft, Porch 24 sq. ft, Fireplace 15 sq. ft, Walls: 199 sq. ft

## Property summary



**2**  
Floors



**3**  
Bedrooms



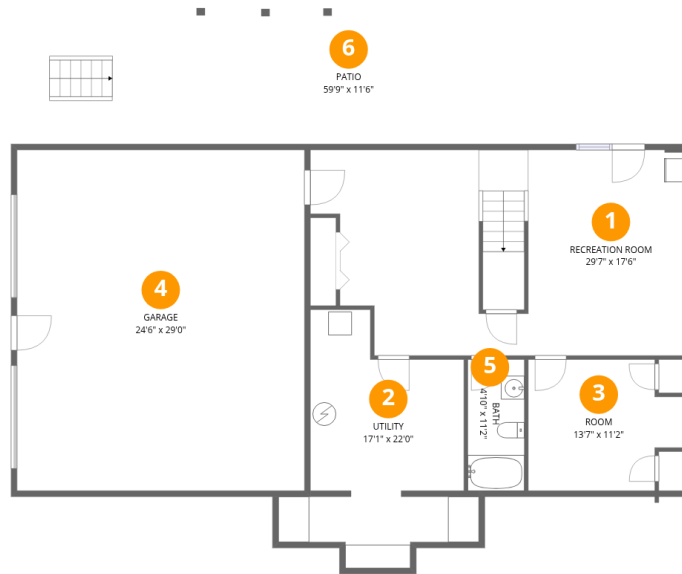
**3**  
Bathrooms



**1**  
Garages

## Home data report

**384 Deer Haven Drive, Roanoke, Botetourt County, Virginia,  
United States, 24012**



## Room dimensions

Floor 1

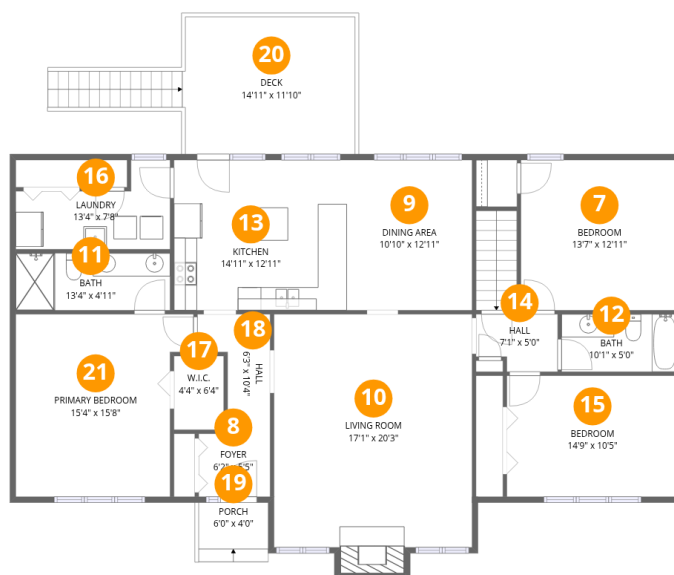
Total:614sqft

Excluded: 1755sqft

#		Dimensions	sqft	Counted as living area
1	Recreation Room	29'7" x 17'6"	518 sq. ft	Yes
2	Utility	17'1" x 22'0"	376 sq. ft	No
3	Room	13'7" x 11'2"	152 sq. ft	No
4	Garage	24'6" x 29'0"	711 sq. ft	No
5	Bath	4'10" x 11'2"	54 sq. ft	Yes
6	Patio	59'9" x 11'6"	687 sq. ft	No

Home data report

384 Deer Haven Drive, Roanoke, Botetourt County, Virginia, United States, 24012



Room dimensions

Floor 2

Total:1736sqft Excluded: 249sqft

#		Dimensions	sqft	Counted as living area
7	Bedroom	13'7" x 12'11"	176 sq. ft	Yes
8	Foyer	6'2" x 5'5"	33 sq. ft	Yes
9	Dining Area	10'10" x 12'11"	140 sq. ft	Yes
10	Living Room	17'1" x 20'3"	345 sq. ft	Yes
11	Bath	13'4" x 4'11"	65 sq. ft	Yes
12	Bath	10'1" x 5'0"	50 sq. ft	Yes
13	Kitchen	14'11" x 12'11"	193 sq. ft	Yes
14	Hall	7'1" x 5'0"	35 sq. ft	Yes
15	Bedroom	14'9" x 10'5"	154 sq. ft	Yes
16	Laundry	13'4" x 7'8"	103 sq. ft	Yes
17	W.I.C.	4'4" x 6'4"	27 sq. ft	Yes

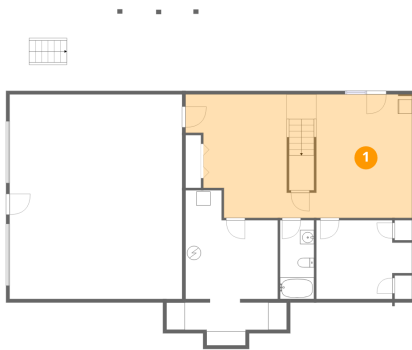
Home data report

**384 Deer Haven Drive, Roanoke, Botetourt County, Virginia,  
United States, 24012**

#		Dimensions	sqft	Counted as living area
18	Hall	6'3" x 10'4"	65 sq. ft	Yes
19	Porch	6'0" x 4'0"	24 sq. ft	No
20	Deck	14'11" x 11'10"	176 sq. ft	No
21	Primary Bedroom	15'4" x 15'8"	241 sq. ft	Yes

384 Deer Haven Drive, Roanoke, Botetourt County, Virginia,  
United States, 24012

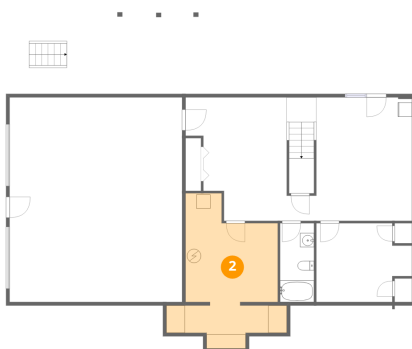
## 1 Floor 1 - Recreation Room



Dimensions: 29'7" x 17'6"  
Area: 518 sq. ft  
Counted as living area: Yes

Heated: Yes  
Finished: Yes  
Enclosed: Yes  
Contiguous: Yes  
Permitted: Yes  
Wet space: No  
Addition: No  
Conversion: No

## 2 Floor 1 - Utility

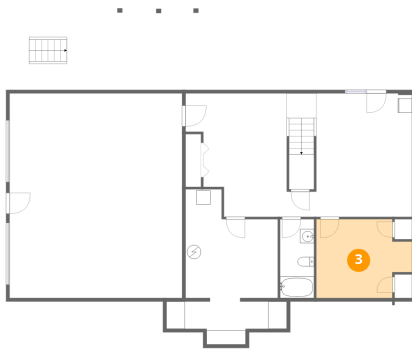


Dimensions: 17'1" x 22'0"  
Area: 376 sq. ft  
Counted as living area: No

Heated: Yes  
Finished: No  
Enclosed: Yes  
Contiguous: Yes  
Permitted: Yes  
Wet space: No  
Addition: No  
Conversion: No

384 Deer Haven Drive, Roanoke, Botetourt County, Virginia,  
United States, 24012

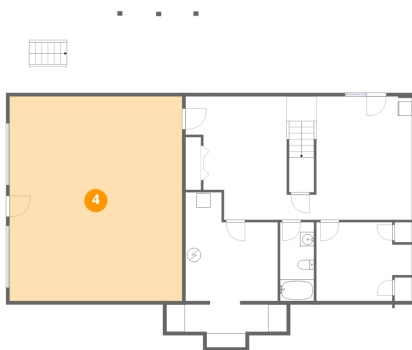
**3** Floor 1 - Room



Dimensions: 13'7" x 11'2"  
Area: 152 sq. ft  
Counted as living area: No

Heated: Yes  
Finished: No  
Enclosed: Yes  
Contiguous: Yes  
Permitted: Yes  
Wet space: No  
Addition: No  
Conversion: No

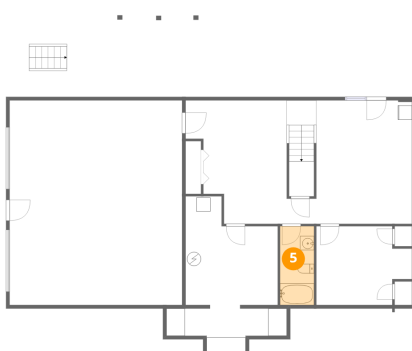
**4** Floor 1 - Garage



Dimensions: 24'6" x 29'0"  
Area: 711 sq. ft  
Counted as living area: No

Heated: No  
Finished: No  
Enclosed: Yes  
Contiguous: Yes  
Permitted: Yes  
Wet space: No  
Addition: No  
Conversion: No

**5** Floor 1 - Bath

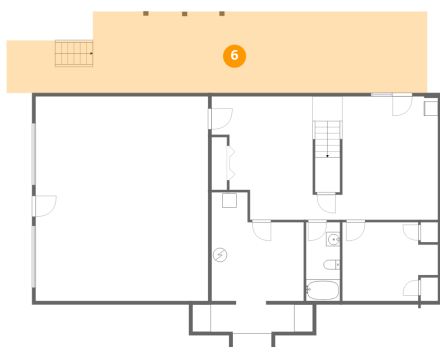


Dimensions: 4'10" x 11'2"  
Area: 54 sq. ft  
Counted as living area: Yes

Heated: Yes  
Finished: Yes  
Enclosed: Yes  
Contiguous: Yes  
Permitted: Yes  
Wet space: Yes  
Addition: No  
Conversion: No

384 Deer Haven Drive, Roanoke, Botetourt County, Virginia,  
United States, 24012

**6** Floor 1 - Patio



Dimensions: 59'9" x 11'6"  
Area: 687 sq. ft  
Counted as living area: No

Heated: No  
Finished: No  
Enclosed: No  
Contiguous: Yes  
Permitted: Yes  
Wet space: No  
Addition: No  
Conversion: No

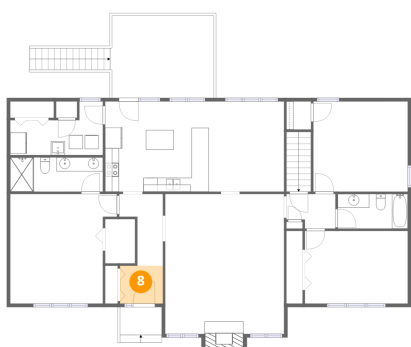
**7** Floor 2 - Bedroom



Dimensions: 13'7" x 12'11"  
Area: 176 sq. ft  
Counted as living area: Yes

Heated: Yes  
Finished: Yes  
Enclosed: Yes  
Contiguous: Yes  
Permitted: Yes  
Wet space: No  
Addition: No  
Conversion: No

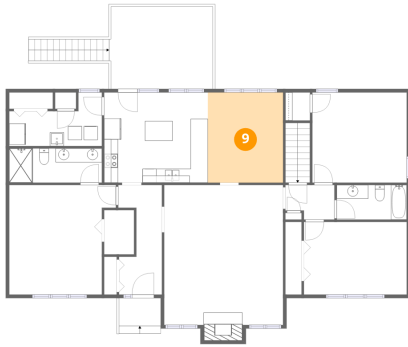
**8** Floor 2 - Foyer



Dimensions: 6'2" x 5'5"  
Area: 33 sq. ft  
Counted as living area: Yes

Heated: Yes  
Finished: Yes  
Enclosed: Yes  
Contiguous: Yes  
Permitted: Yes  
Wet space: No  
Addition: No  
Conversion: No

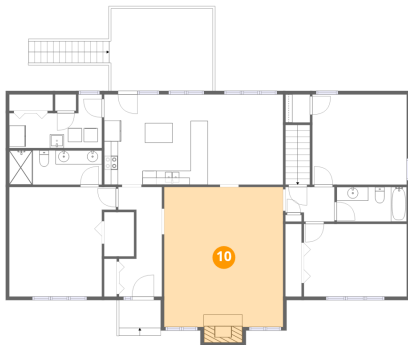
**9** Floor 2 - Dining Area



Dimensions: 10'10" x 12'11"  
Area: 140 sq. ft  
Counted as living area: Yes

Heated: Yes  
Finished: Yes  
Enclosed: Yes  
Contiguous: Yes  
Permitted: Yes  
Wet space: No  
Addition: No  
Conversion: No

**10** Floor 2 - Living Room



Dimensions: 17'1" x 20'3"  
Area: 345 sq. ft  
Counted as living area: Yes

Heated: Yes  
Finished: Yes  
Enclosed: Yes  
Contiguous: Yes  
Permitted: Yes  
Wet space: No  
Addition: No  
Conversion: No

**11** Floor 2 - Bath



Dimensions: 13'4" x 4'11"  
Area: 65 sq. ft  
Counted as living area: Yes

Heated: Yes  
Finished: Yes  
Enclosed: Yes  
Contiguous: Yes  
Permitted: Yes  
Wet space: Yes  
Addition: No  
Conversion: No

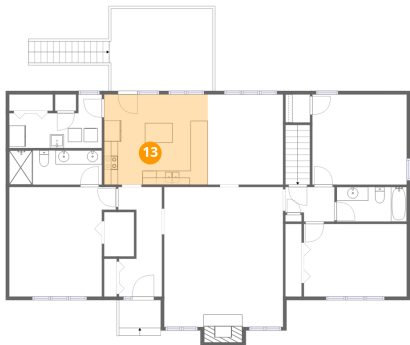
**12** Floor 2 - Bath



Dimensions: 10'1" x 5'0"  
Area: 50 sq. ft  
Counted as living area: Yes

Heated: Yes  
Finished: Yes  
Enclosed: Yes  
Contiguous: Yes  
Permitted: Yes  
Wet space: Yes  
Addition: No  
Conversion: No

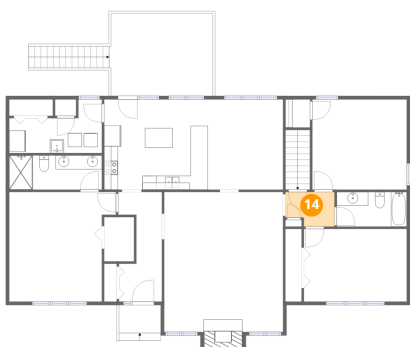
**13** Floor 2 - Kitchen



Dimensions: 14'11" x 12'11"  
Area: 193 sq. ft  
Counted as living area: Yes

Heated: Yes  
Finished: Yes  
Enclosed: Yes  
Contiguous: Yes  
Permitted: Yes  
Wet space: No  
Addition: No  
Conversion: No

**14** Floor 2 - Hall



Dimensions: 7'1" x 5'0"  
Area: 35 sq. ft  
Counted as living area: Yes

Heated: Yes  
Finished: Yes  
Enclosed: Yes  
Contiguous: Yes  
Permitted: Yes  
Wet space: No  
Addition: No  
Conversion: No

**15** Floor 2 - Bedroom



Dimensions: 14'9" x 10'5"  
Area: 154 sq. ft  
Counted as living area: Yes

Heated: Yes  
Finished: Yes  
Enclosed: Yes  
Contiguous: Yes  
Permitted: Yes  
Wet space: No  
Addition: No  
Conversion: No

**16** Floor 2 - Laundry



Dimensions: 13'4" x 7'8"  
Area: 103 sq. ft  
Counted as living area: Yes

Heated: Yes  
Finished: Yes  
Enclosed: Yes  
Contiguous: Yes  
Permitted: Yes  
Wet space: No  
Addition: No  
Conversion: No

**17** Floor 2 - W.I.C.



Dimensions: 4'4" x 6'4"  
Area: 27 sq. ft  
Counted as living area: Yes

Heated: Yes  
Finished: Yes  
Enclosed: Yes  
Contiguous: Yes  
Permitted: Yes  
Wet space: No  
Addition: No  
Conversion: No

384 Deer Haven Drive, Roanoke, Botetourt County, Virginia,  
United States, 24012

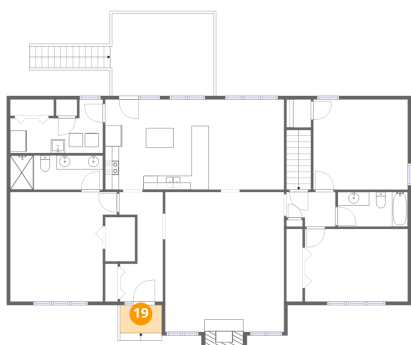
**18** Floor 2 - Hall



Dimensions: 6'3" x 10'4"  
Area: 65 sq. ft  
Counted as living area: Yes

Heated: Yes  
Finished: Yes  
Enclosed: Yes  
Contiguous: Yes  
Permitted: Yes  
Wet space: No  
Addition: No  
Conversion: No

**19** Floor 2 - Porch



Dimensions: 6'0" x 4'0"  
Area: 24 sq. ft  
Counted as living area: No

Heated: No  
Finished: No  
Enclosed: No  
Contiguous: Yes  
Permitted: Yes  
Wet space: No  
Addition: No  
Conversion: No

**20** Floor 2 - Deck



Dimensions: 14'11" x 11'10"  
Area: 176 sq. ft  
Counted as living area: No

Heated: No  
Finished: No  
Enclosed: No  
Contiguous: Yes  
Permitted: Yes  
Wet space: No  
Addition: No  
Conversion: No

**384 Deer Haven Drive, Roanoke, Botetourt County, Virginia,  
United States, 24012**

**21 Floor 2 - Primary Bedroom**

---



**Dimensions: 15'4" x 15'8"**  
**Area: 241 sq. ft**  
**Counted as living area: Yes**

**Heated: Yes**  
**Finished: Yes**  
**Enclosed: Yes**  
**Contiguous: Yes**  
**Permitted: Yes**  
**Wet space: No**  
**Addition: No**  
**Conversion: No**