

BASEMENT  
30'5" x 22'8"

ROOM  
19'6" x 11'0"

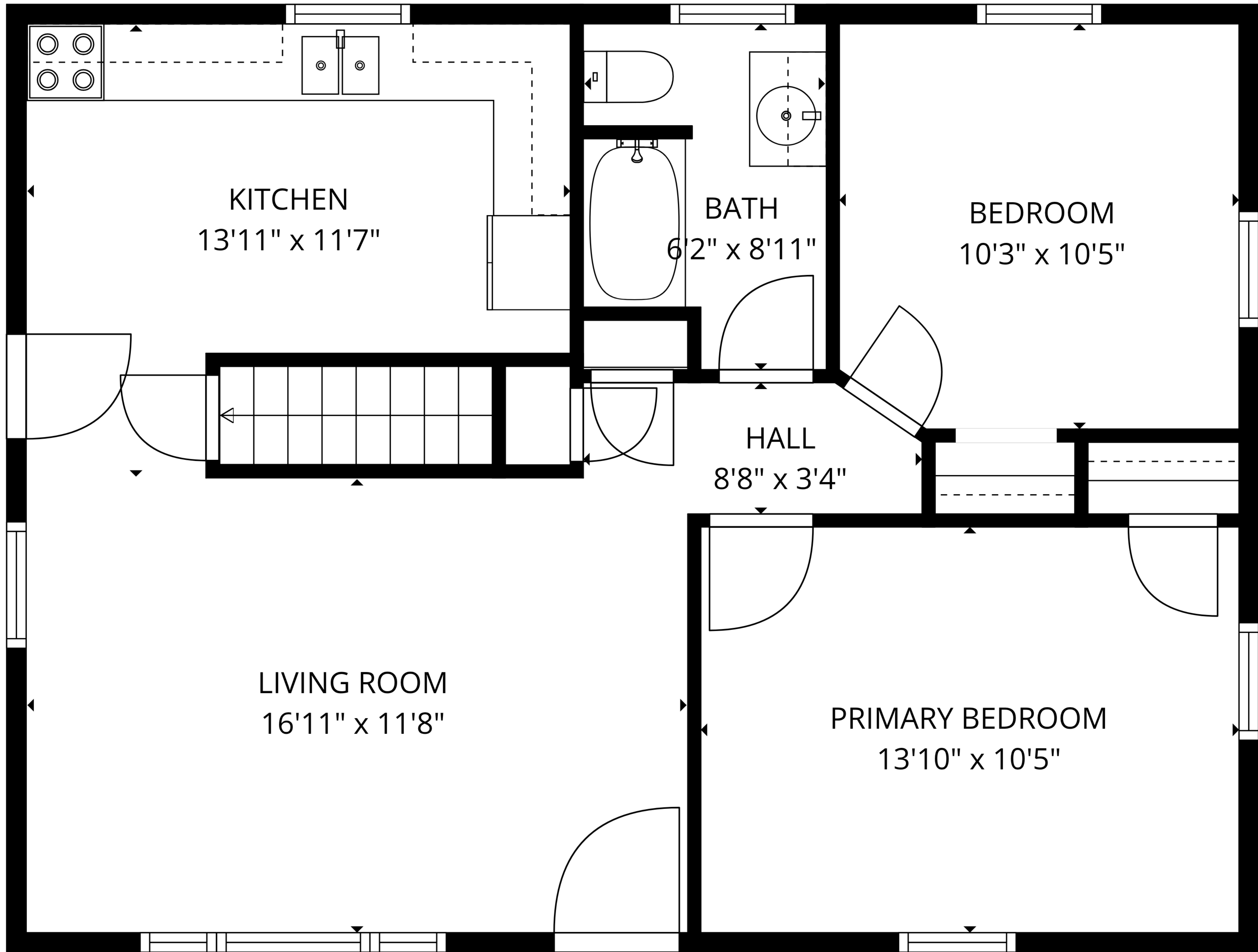
**TOTAL: 727 sq. ft**

Basement: 0 sq. ft, 1st floor: 727 sq. ft

EXCLUDED AREAS: ROOM: 225 sq. ft, BASEMENT: 466 sq. ft, WALLS: 110 sq. ft



Floor Plans are provided by HouseSnappers.com. Measurements are deemed highly reliable but not guaranteed.

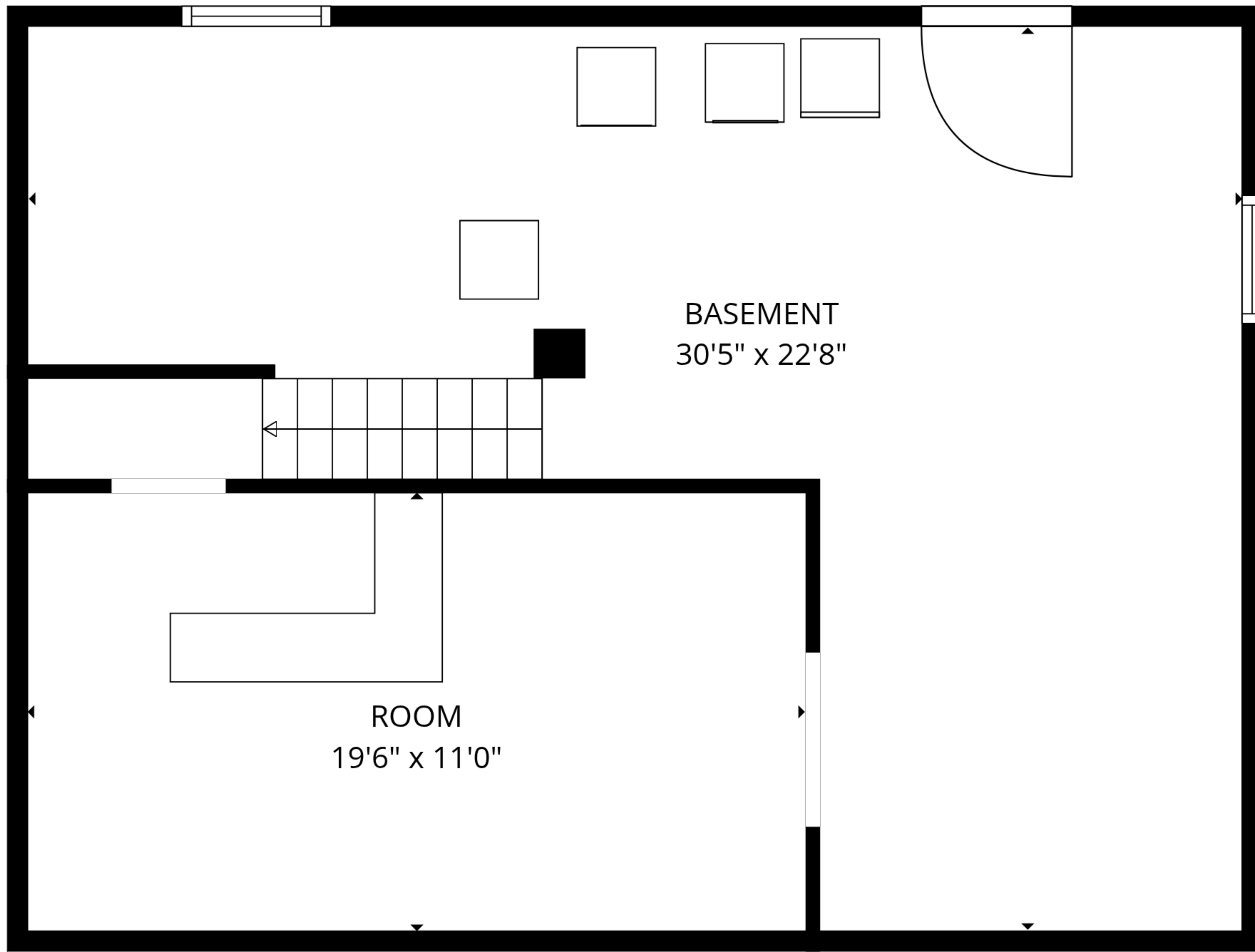


**TOTAL: 727 sq. ft**

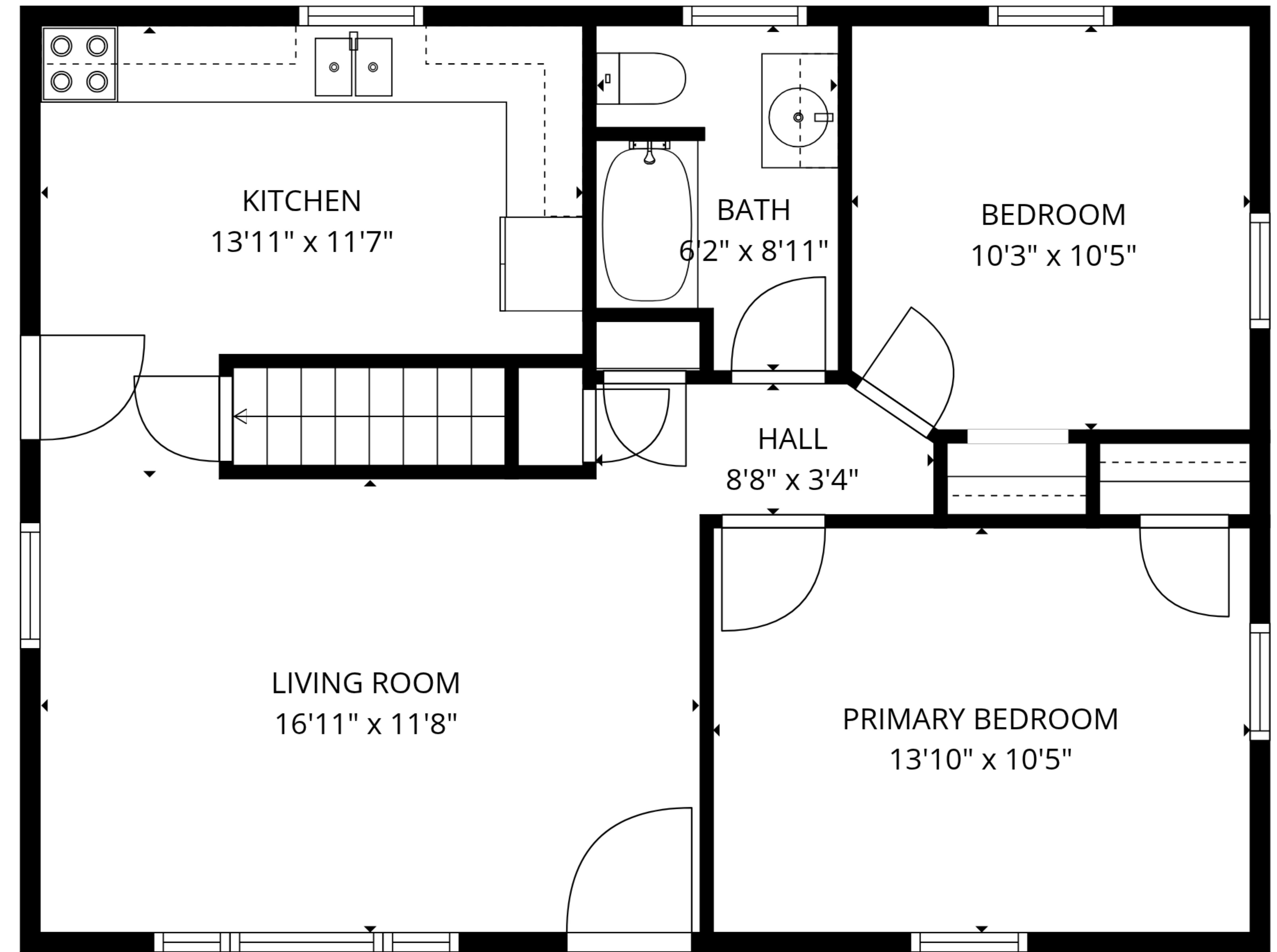
Basement: 0 sq. ft, 1st floor: 727 sq. ft

EXCLUDED AREAS: ROOM: 225 sq. ft, BASEMENT: 466 sq. ft, WALLS: 110 sq. ft





Basement



1st floor

**TOTAL: 727 sq. ft**

Basement: 0 sq. ft, 1st floor: 727 sq. ft

EXCLUDED AREAS: ROOM: 225 sq. ft, BASEMENT: 466 sq. ft, WALLS: 110 sq. ft

