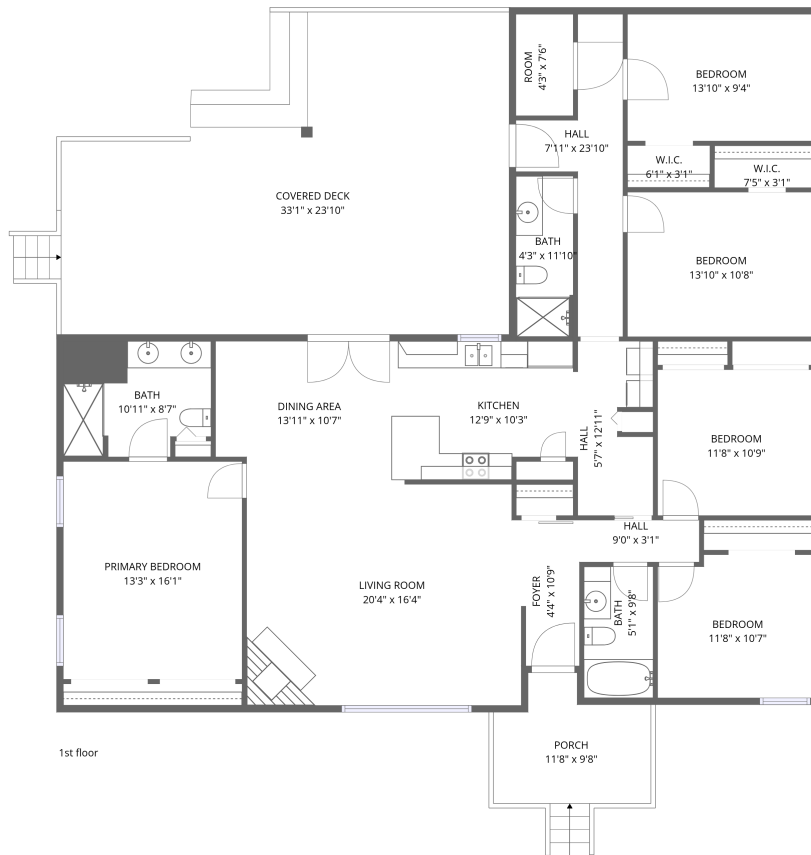


Home data report

774 Lcr 786, Groesbeck, TX, US



Total Area: 2008 sq. ft

1st Floor: 2008 sq. ft

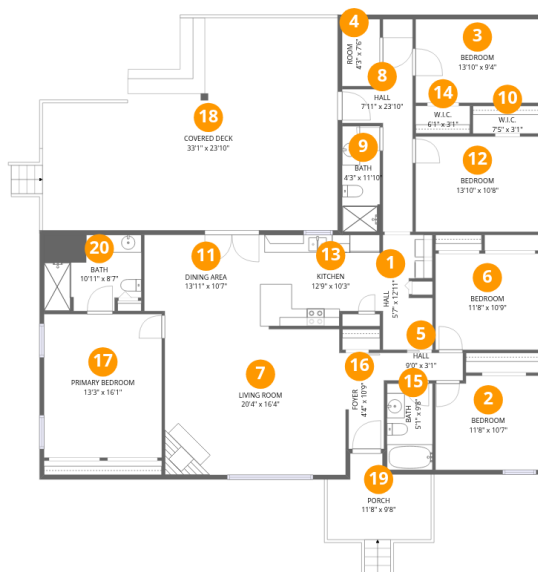
Excluded: Porch 92 sq. ft, Covered deck 675 sq. ft, Walls: 110 sq. ft

Property summary

 **1** Floors

 **5** Bedrooms

 **3** Bathrooms



Room dimensions

Floor 1

Total:2008sqft Excluded: 767sqft

#		Dimensions	sqft	Counted as living area
1	Hall	5'7" x 12'11"	72 sq. ft	Yes
2	Bedroom	11'8" x 10'7"	123 sq. ft	Yes
3	Bedroom	13'10" x 9'4"	130 sq. ft	Yes
4	Room	4'3" x 7'6"	32 sq. ft	Yes
5	Hall	9'0" x 3'1"	28 sq. ft	Yes
6	Bedroom	11'8" x 10'9"	126 sq. ft	Yes
7	Living Room	20'4" x 16'4"	332 sq. ft	Yes
8	Hall	7'11" x 23'10"	189 sq. ft	Yes
9	Bath	4'3" x 11'10"	50 sq. ft	Yes
10	W.I.C.	7'5" x 3'1"	23 sq. ft	Yes
11	Dining Area	13'11" x 10'7"	148 sq. ft	Yes

Home data report

774 Lcr 786,Groesbeck,TX,US

#		Dimensions	sqft	Counted as living area
12	Bedroom	13'10" x 10'8"	148 sq. ft	Yes
13	Kitchen	12'9" x 10'3"	131 sq. ft	Yes
14	W.I.C.	6'1" x 3'1"	19 sq. ft	Yes
15	Bath	5'1" x 9'8"	50 sq. ft	Yes
16	Foyer	4'4" x 10'9"	46 sq. ft	Yes
17	Primary Bedroom	13'3" x 16'1"	213 sq. ft	Yes
18	Covered Deck	33'1" x 23'10"	790 sq. ft	No
19	Porch	11'8" x 9'8"	113 sq. ft	No
20	Bath	10'11" x 8'7"	93 sq. ft	Yes

1 Floor 1 - Hall



Dimensions: 5'7" x 12'11"
Area: 72 sq. ft
Counted as living area: Yes

Heated: Yes
Finished: Yes
Enclosed: Yes
Contiguous: Yes
Permitted: Yes
Wet space: No
Addition: No
Conversion: No

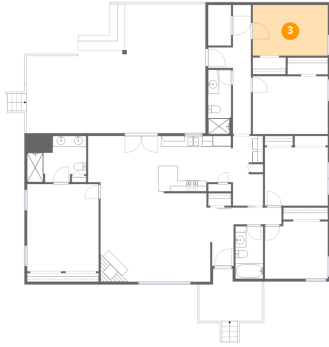
2 Floor 1 - Bedroom



Dimensions: 11'8" x 10'7"
Area: 123 sq. ft
Counted as living area: Yes

Heated: Yes
Finished: Yes
Enclosed: Yes
Contiguous: Yes
Permitted: Yes
Wet space: No
Addition: No
Conversion: No

3 Floor 1 - Bedroom



Dimensions: 13'10" x 9'4"
Area: 130 sq. ft
Counted as living area: Yes

Heated: Yes
Finished: Yes
Enclosed: Yes
Contiguous: Yes
Permitted: Yes
Wet space: No
Addition: No
Conversion: No

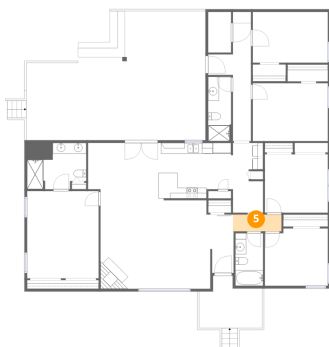
4 Floor 1 - Room



Dimensions: 4'3" x 7'6"
Area: 32 sq. ft
Counted as living area: Yes

Heated: Yes
Finished: Yes
Enclosed: Yes
Contiguous: Yes
Permitted: Yes
Wet space: No
Addition: No
Conversion: No

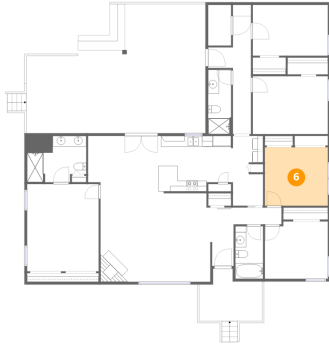
5 Floor 1 - Hall



Dimensions: 9'0" x 3'1"
Area: 28 sq. ft
Counted as living area: Yes

Heated: Yes
Finished: Yes
Enclosed: Yes
Contiguous: Yes
Permitted: Yes
Wet space: No
Addition: No
Conversion: No

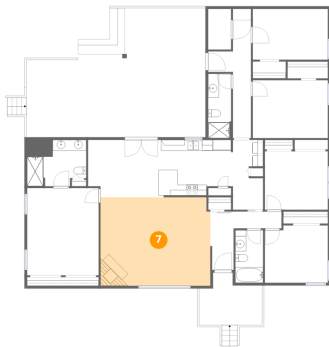
6 Floor 1 - Bedroom



Dimensions: 11'8" x 10'9"
Area: 126 sq. ft
Counted as living area: Yes

Heated: Yes
Finished: Yes
Enclosed: Yes
Contiguous: Yes
Permitted: Yes
Wet space: No
Addition: No
Conversion: No

7 Floor 1 - Living Room



Dimensions: 20'4" x 16'4"
Area: 332 sq. ft
Counted as living area: Yes

Heated: Yes
Finished: Yes
Enclosed: Yes
Contiguous: Yes
Permitted: Yes
Wet space: No
Addition: No
Conversion: No

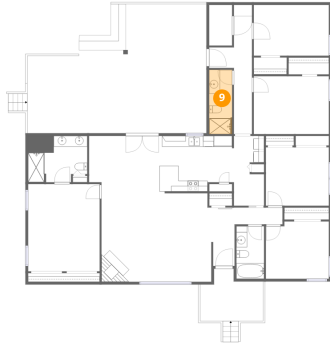
8 Floor 1 - Hall



Dimensions: 7'11" x 23'10"
Area: 189 sq. ft
Counted as living area: Yes

Heated: Yes
Finished: Yes
Enclosed: Yes
Contiguous: Yes
Permitted: Yes
Wet space: No
Addition: No
Conversion: No

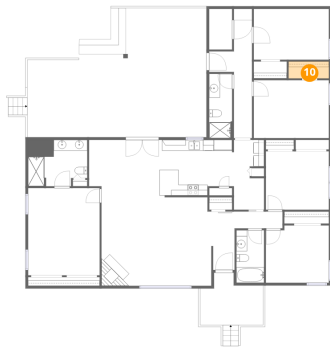
9 Floor 1 - Bath



Dimensions: 4'3" x 11'10"
Area: 50 sq. ft
Counted as living area: Yes

Heated: Yes
Finished: Yes
Enclosed: Yes
Contiguous: Yes
Permitted: Yes
Wet space: Yes
Addition: No
Conversion: No

10 Floor 1 - W.I.C.



Dimensions: 7'5" x 3'1"
Area: 23 sq. ft
Counted as living area: Yes

Heated: Yes
Finished: Yes
Enclosed: Yes
Contiguous: Yes
Permitted: Yes
Wet space: No
Addition: No
Conversion: No

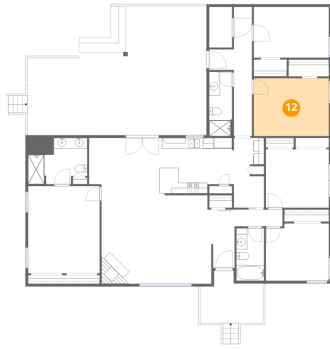
11 Floor 1 - Dining Area



Dimensions: 13'11" x 10'7"
Area: 148 sq. ft
Counted as living area: Yes

Heated: Yes
Finished: Yes
Enclosed: Yes
Contiguous: Yes
Permitted: Yes
Wet space: No
Addition: No
Conversion: No

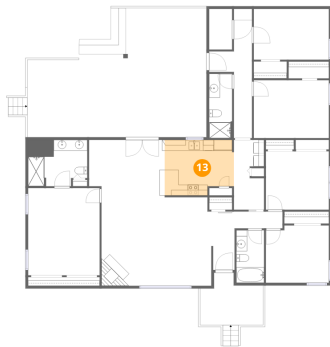
12 Floor 1 - Bedroom



Dimensions: 13'10" x 10'8"
Area: 148 sq. ft
Counted as living area: Yes

Heated: Yes
Finished: Yes
Enclosed: Yes
Contiguous: Yes
Permitted: Yes
Wet space: No
Addition: No
Conversion: No

13 Floor 1 - Kitchen



Dimensions: 12'9" x 10'3"
Area: 131 sq. ft
Counted as living area: Yes

Heated: Yes
Finished: Yes
Enclosed: Yes
Contiguous: Yes
Permitted: Yes
Wet space: No
Addition: No
Conversion: No

14 Floor 1 - W.I.C.



Dimensions: 6'1" x 3'1"
Area: 19 sq. ft
Counted as living area: Yes

Heated: Yes
Finished: Yes
Enclosed: Yes
Contiguous: Yes
Permitted: Yes
Wet space: No
Addition: No
Conversion: No

15 Floor 1 - Bath



Dimensions: 5'1" x 9'8"
Area: 50 sq. ft
Counted as living area: Yes

Heated: Yes
Finished: Yes
Enclosed: Yes
Contiguous: Yes
Permitted: Yes
Wet space: Yes
Addition: No
Conversion: No

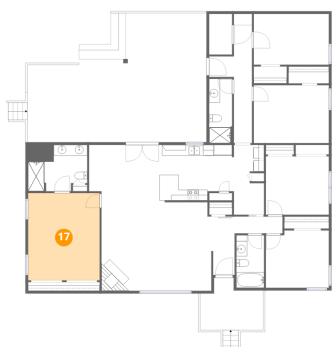
16 Floor 1 - Foyer



Dimensions: 4'4" x 10'9"
Area: 46 sq. ft
Counted as living area: Yes

Heated: Yes
Finished: Yes
Enclosed: Yes
Contiguous: Yes
Permitted: Yes
Wet space: No
Addition: No
Conversion: No

17 Floor 1 - Primary Bedroom



Dimensions: 13'3" x 16'1"
Area: 213 sq. ft
Counted as living area: Yes

Heated: Yes
Finished: Yes
Enclosed: Yes
Contiguous: Yes
Permitted: Yes
Wet space: No
Addition: No
Conversion: No

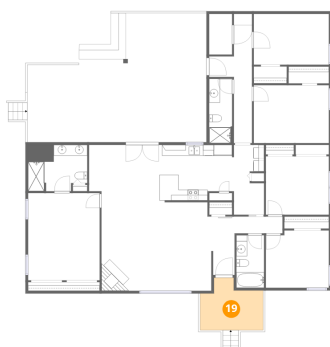
18 Floor 1 - Covered Deck



Dimensions: 33'1" x 23'10"
Area: 790 sq. ft
Counted as living area: No

Heated: No
Finished: No
Enclosed: No
Contiguous: Yes
Permitted: Yes
Wet space: No
Addition: No
Conversion: No

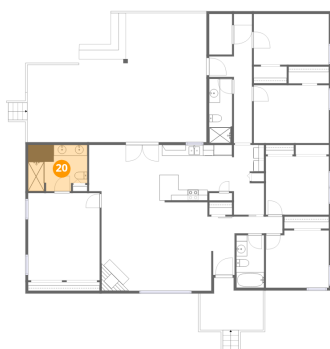
19 Floor 1 - Porch



Dimensions: 11'8" x 9'8"
Area: 113 sq. ft
Counted as living area: No

Heated: No
Finished: No
Enclosed: No
Contiguous: Yes
Permitted: Yes
Wet space: No
Addition: No
Conversion: No

20 Floor 1 - Bath



Dimensions: 10'11" x 8'7"
Area: 93 sq. ft
Counted as living area: Yes

Heated: Yes
Finished: Yes
Enclosed: Yes
Contiguous: Yes
Permitted: Yes
Wet space: Yes
Addition: No
Conversion: No