

Home report

3004 Woodthrush Drive, Cave Spring, Roanoke, Roanoke  
County, Virginia, United States, 24018



Total Area: 1837 sq. ft

Floor 1: 0 sq. ft, Floor 2: 567 sq. ft, Floor 3: 638 sq. ft, Floor 4: 632 sq. ft  
Excluded: Basement 638 sq. ft, Fireplace 11 sq. ft, Shed 31 sq. ft, Carport 258 sq. ft,  
Walls: 214 sq. ft

Property summary

 **4** Floors

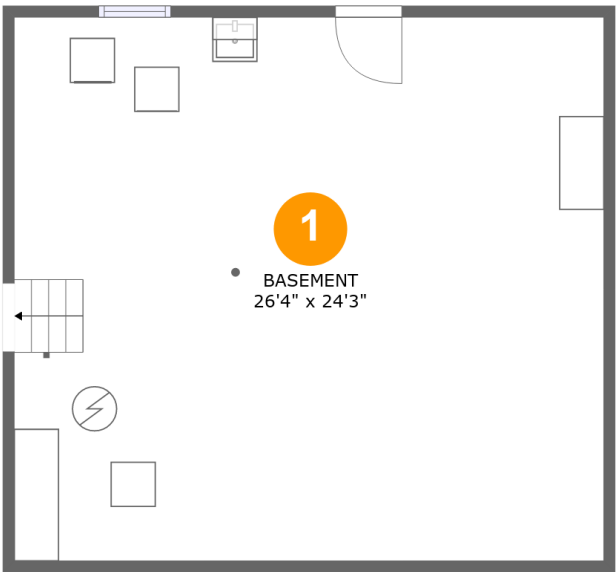
 **4** Bedrooms

 **2** Bathrooms

 **1** Half baths

Home report

3004 Woodthrush Drive, Cave Spring, Roanoke, Roanoke County, Virginia, United States, 24018



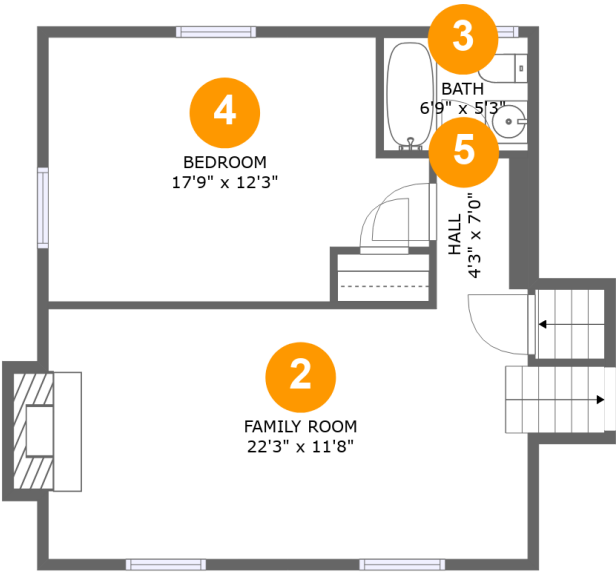
Room dimensions

Floor 1 Total:0sqft   Excluded: 638sqft

#		Max Dimensions	sqft	Included
1	Basement	26'4" x 24'3"	638 sq. ft	No

Home report

3004 Woodthrush Drive, Cave Spring, Roanoke, Roanoke County, Virginia, United States, 24018



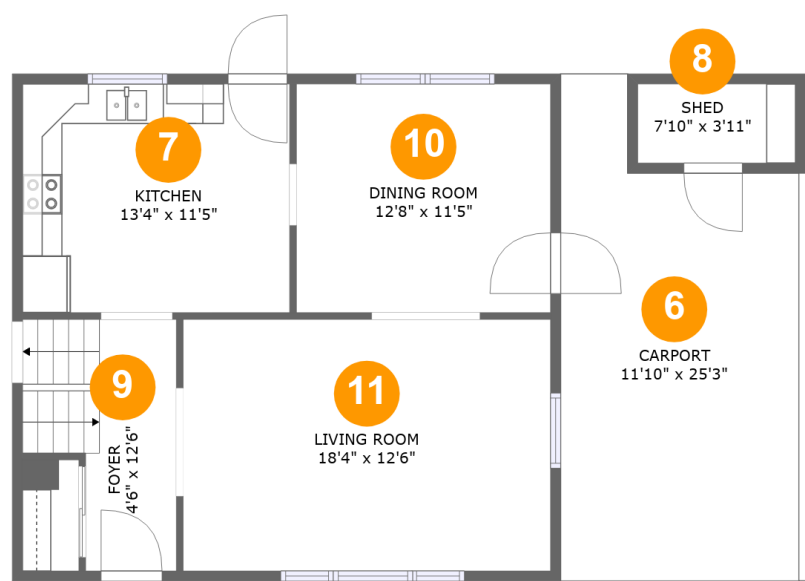
Room dimensions

Floor 2 Total:567sqft Excluded: 11sqft

#		Max Dimensions	sqft	Included
2	Family Room	22'3" x 11'8"	279 sq. ft	Yes
3	Bath	6'9" x 5'3"	35 sq. ft	Yes
4	Bedroom	17'9" x 12'3"	192 sq. ft	Yes
5	Hall	4'3" x 7'0"	30 sq. ft	Yes

Home report

3004 Woodthrush Drive, Cave Spring, Roanoke, Roanoke  
County, Virginia, United States, 24018



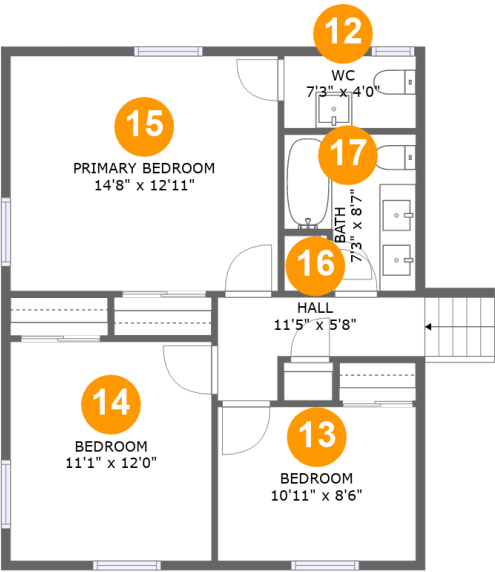
Room dimensions

Floor 3 Total:638sqft   Excluded: 289sqft

#		Max Dimensions	sqft	Included
6	Carport	11'10" x 25'3"	258 sq. ft	No
7	Kitchen	13'4" x 11'5"	152 sq. ft	Yes
8	Shed	7'10" x 3'11"	31 sq. ft	No
9	Foyer	4'6" x 12'6"	78 sq. ft	Yes
10	Dining Room	12'8" x 11'5"	144 sq. ft	Yes
11	Living Room	18'4" x 12'6"	229 sq. ft	Yes

Home report

3004 Woodthrush Drive, Cave Spring, Roanoke, Roanoke  
County, Virginia, United States, 24018



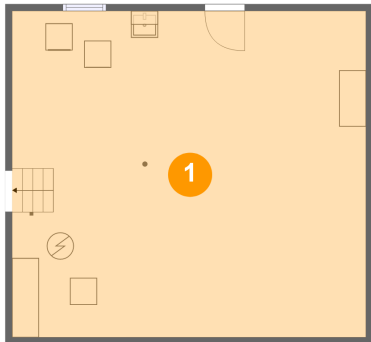
Room dimensions

Floor 4 Total:632sqft Excluded: 0sqft

#		Max Dimensions	sqft	Included
12	WC	7'3" x 4'0"	29 sq. ft	Yes
13	Bedroom	10'11" x 8'6"	92 sq. ft	Yes
14	Bedroom	11'1" x 12'0"	133 sq. ft	Yes
15	Primary Bedroom	14'8" x 12'11"	190 sq. ft	Yes
16	Hall	11'5" x 5'8"	57 sq. ft	Yes
17	Bath	7'3" x 8'7"	53 sq. ft	Yes

3004 Woodthrush Drive, Cave Spring, Roanoke, Roanoke  
County, Virginia, United States, 24018

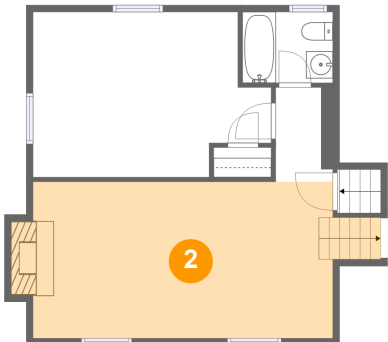
1 Floor 1 - Basement



Max Dimensions: 26'4" x 24'3"  
Calculated Area: 638 sq. ft  
Included: No

Heated: Yes  
Finished: No  
Enclosed: Yes  
Contiguous: Yes  
Permitted: Yes  
Wet space: No  
Addition: No  
Conversion: No

2 Floor 2 - Family Room



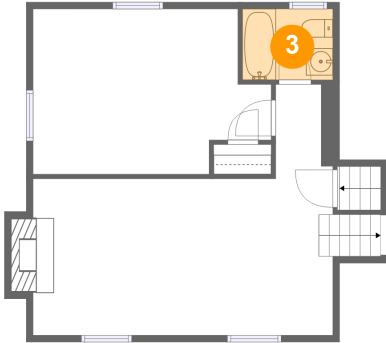
Max Dimensions: 22'3" x 11'8"  
Calculated Area: 279 sq. ft  
Included: Yes

Heated: Yes  
Finished: Yes  
Enclosed: Yes  
Contiguous: Yes  
Permitted: Yes  
Wet space: No  
Addition: No  
Conversion: No

## Home report

3004 Woodthrush Drive, Cave Spring, Roanoke, Roanoke  
County, Virginia, United States, 24018

### 3 Floor 2 - Bath



Max Dimensions: 6'9" x 5'3"  
Calculated Area: 35 sq. ft  
Included: Yes

Heated: Yes  
Finished: Yes  
Enclosed: Yes  
Contiguous: Yes  
Permitted: Yes  
Wet space: Yes  
Addition: No  
Conversion: No

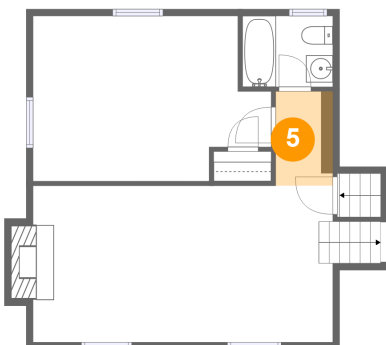
### 4 Floor 2 - Bedroom



Max Dimensions: 17'9" x 12'3"  
Calculated Area: 192 sq. ft  
Included: Yes

Heated: Yes  
Finished: Yes  
Enclosed: Yes  
Contiguous: Yes  
Permitted: Yes  
Wet space: No  
Addition: No  
Conversion: No

### 5 Floor 2 - Hall



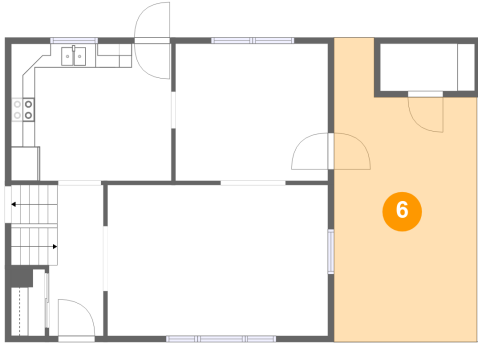
Max Dimensions: 4'3" x 7'0"  
Calculated Area: 30 sq. ft  
Included: Yes

Heated: Yes  
Finished: Yes  
Enclosed: Yes  
Contiguous: Yes  
Permitted: Yes  
Wet space: No  
Addition: No  
Conversion: No

## Home report

3004 Woodthrush Drive, Cave Spring, Roanoke, Roanoke  
County, Virginia, United States, 24018

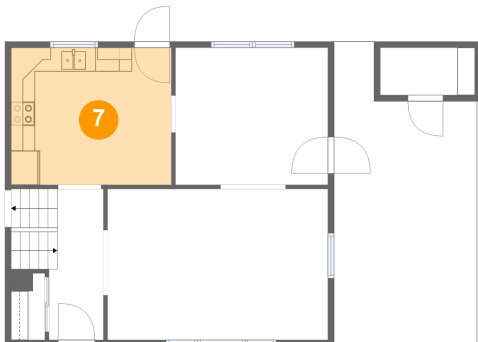
### 6 Floor 3 - Carport



Max Dimensions: 11'10" x 25'3"  
Calculated Area: 258 sq. ft  
Included: No

Heated: No  
Finished: Yes  
Enclosed: No  
Contiguous: Yes  
Permitted: Yes  
Wet space: No  
Addition: No  
Conversion: No

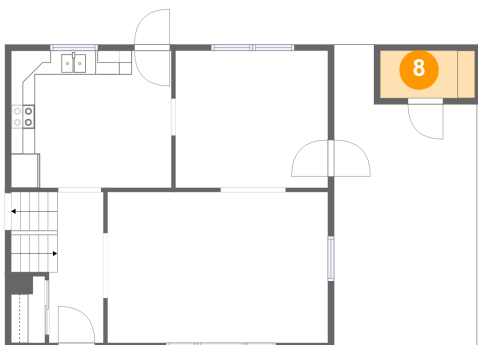
### 7 Floor 3 - Kitchen



Max Dimensions: 13'4" x 11'5"  
Calculated Area: 152 sq. ft  
Included: Yes

Heated: Yes  
Finished: Yes  
Enclosed: Yes  
Contiguous: Yes  
Permitted: Yes  
Wet space: No  
Addition: No  
Conversion: No

### 8 Floor 3 - Shed



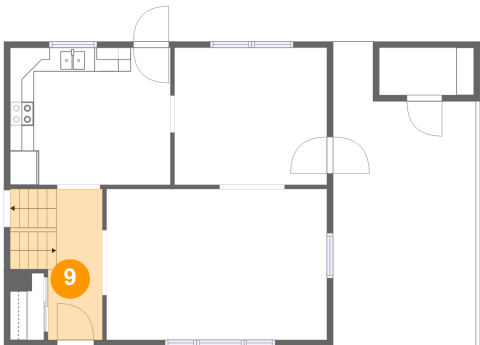
Max Dimensions: 7'10" x 3'11"  
Calculated Area: 31 sq. ft  
Included: No

Heated: No  
Finished: No  
Enclosed: No  
Contiguous: Yes  
Permitted: Yes  
Wet space: No  
Addition: No  
Conversion: No



3004 Woodthrush Drive, Cave Spring, Roanoke, Roanoke  
County, Virginia, United States, 24018

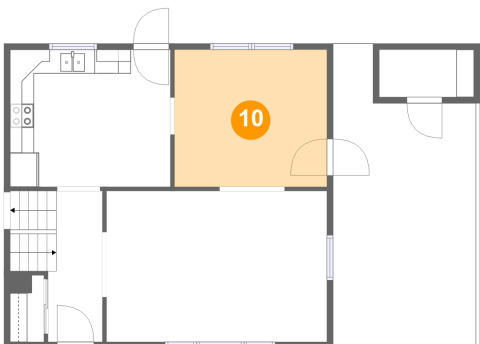
9 Floor 3 - Foyer



Max Dimensions: 4'6" x 12'6"  
Calculated Area: 78 sq. ft  
Included: Yes

Heated: Yes  
Finished: Yes  
Enclosed: Yes  
Contiguous: Yes  
Permitted: Yes  
Wet space: No  
Addition: No  
Conversion: No

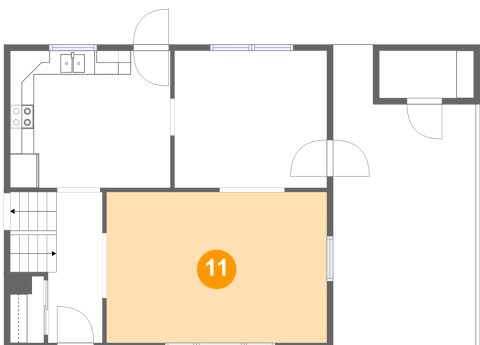
10 Floor 3 - Dining Room



Max Dimensions: 12'8" x 11'5"  
Calculated Area: 144 sq. ft  
Included: Yes

Heated: Yes  
Finished: Yes  
Enclosed: Yes  
Contiguous: Yes  
Permitted: Yes  
Wet space: No  
Addition: No  
Conversion: No

11 Floor 3 - Living Room

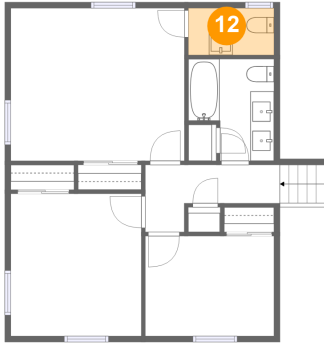


Max Dimensions: 18'4" x 12'6"  
Calculated Area: 229 sq. ft  
Included: Yes

Heated: Yes  
Finished: Yes  
Enclosed: Yes  
Contiguous: Yes  
Permitted: Yes  
Wet space: No  
Addition: No  
Conversion: No

3004 Woodthrush Drive, Cave Spring, Roanoke, Roanoke  
County, Virginia, United States, 24018

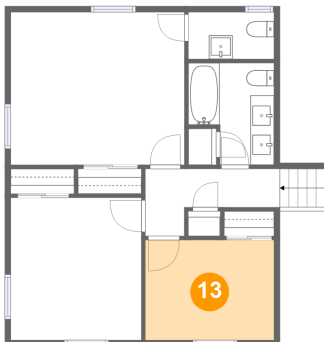
## 12 Floor 4 - WC



Max Dimensions: 7'3" x 4'0"  
Calculated Area: 29 sq. ft  
Included: Yes

Heated: Yes  
Finished: Yes  
Enclosed: Yes  
Contiguous: Yes  
Permitted: Yes  
Wet space: Yes  
Addition: No  
Conversion: No

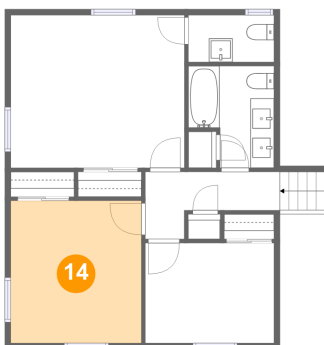
## 13 Floor 4 - Bedroom



Max Dimensions: 10'11" x 8'6"  
Calculated Area: 92 sq. ft  
Included: Yes

Heated: Yes  
Finished: Yes  
Enclosed: Yes  
Contiguous: Yes  
Permitted: Yes  
Wet space: No  
Addition: No  
Conversion: No

## 14 Floor 4 - Bedroom

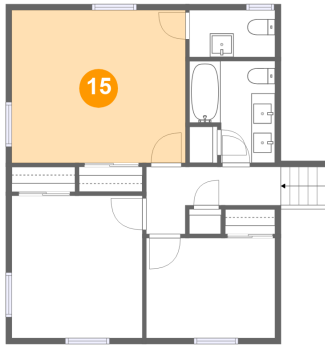


Max Dimensions: 11'1" x 12'0"  
Calculated Area: 133 sq. ft  
Included: Yes

Heated: Yes  
Finished: Yes  
Enclosed: Yes  
Contiguous: Yes  
Permitted: Yes  
Wet space: No  
Addition: No  
Conversion: No

3004 Woodthrush Drive, Cave Spring, Roanoke, Roanoke  
County, Virginia, United States, 24018

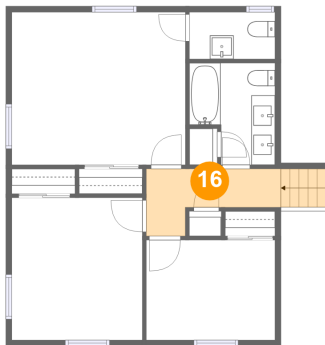
### 15 Floor 4 - Primary Bedroom



Max Dimensions: 14'8" x 12'11"  
Calculated Area: 190 sq. ft  
Included: Yes

Heated: Yes  
Finished: Yes  
Enclosed: Yes  
Contiguous: Yes  
Permitted: Yes  
Wet space: No  
Addition: No  
Conversion: No

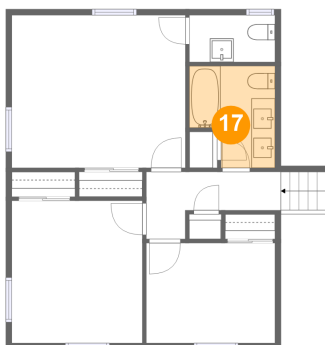
### 16 Floor 4 - Hall



Max Dimensions: 11'5" x 5'8"  
Calculated Area: 57 sq. ft  
Included: Yes

Heated: Yes  
Finished: Yes  
Enclosed: Yes  
Contiguous: Yes  
Permitted: Yes  
Wet space: No  
Addition: No  
Conversion: No

### 17 Floor 4 - Bath



Max Dimensions: 7'3" x 8'7"  
Calculated Area: 53 sq. ft  
Included: Yes

Heated: Yes  
Finished: Yes  
Enclosed: Yes  
Contiguous: Yes  
Permitted: Yes  
Wet space: Yes  
Addition: No  
Conversion: No