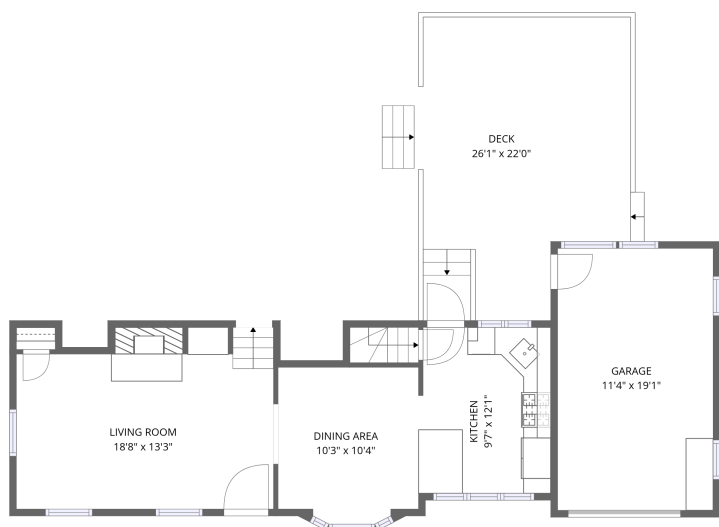
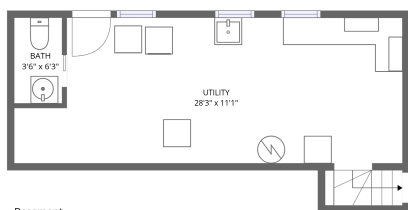


# Home data report

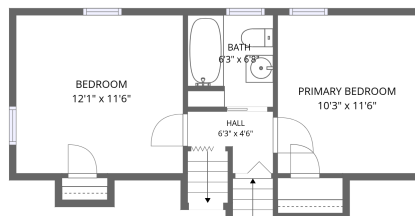
## 485 Union Street, Braintree, Norfolk County, Massachusetts, United States, 02184



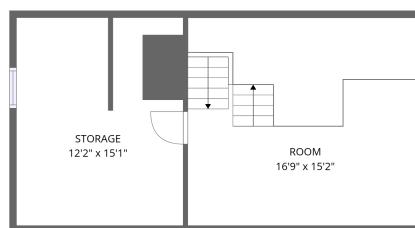
1st floor



Basement



2nd floor



3rd floor

**Total Area: 1137 sq. ft**

Basement: 25 sq. ft, 1st Floor: 479 sq. ft, 2nd Floor: 374 sq. ft, 3rd Floor: 259 sq. ft

Excluded: Utility 292 sq. ft, Garage 216 sq. ft, Deck 366 sq. ft, Embedded window 6 sq. ft, Storage 184 sq. ft, Walls: 213 sq. ft

## Property summary

 **4** Floors

 **2** Bedrooms

 **1** Bathrooms

Home data report

**485 Union Street, Braintree, Norfolk County, Massachusetts,  
United States, 02184**

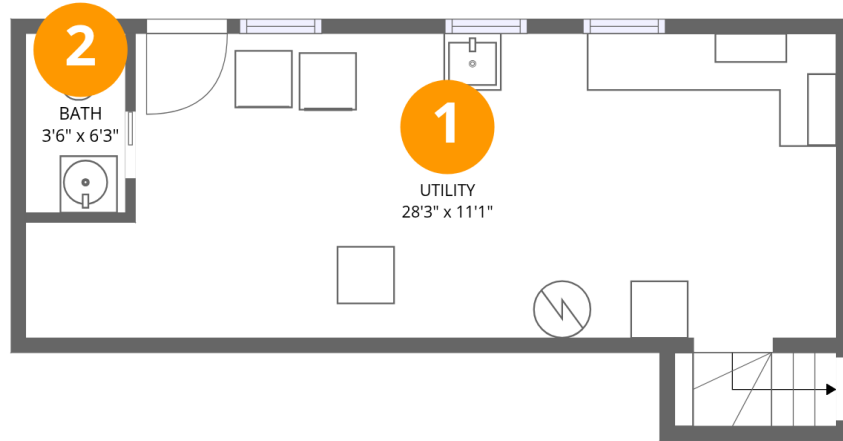


**1**  
Half baths



**1**  
Garages

485 Union Street, Braintree, Norfolk County, Massachusetts,  
United States, 02184



## Room dimensions

Floor 1 Below grade

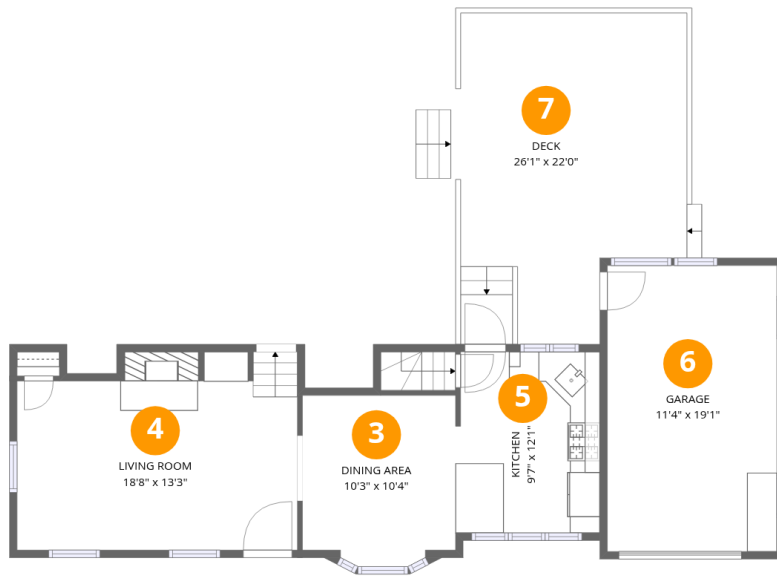
Total:25sqft

Excluded: 292sqft

#		Dimensions	sqft	Counted as living area
1	Utility	28'3" x 11'1"	290 sq. ft	No
2	Bath	3'6" x 6'3"	22 sq. ft	Yes

Home data report

485 Union Street, Braintree, Norfolk County, Massachusetts,  
United States, 02184



## Room dimensions

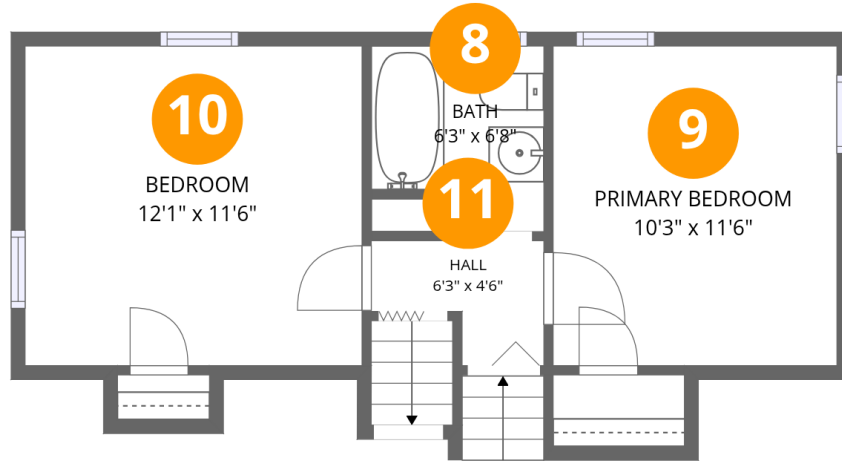
Floor 2

Total:479sqft

Excluded: 588sqft

#		Dimensions	sqft	Counted as living area
3	Dining Area	10'3" x 10'4"	105 sq. ft	Yes
4	Living Room	18'8" x 13'3"	232 sq. ft	Yes
5	Kitchen	9'7" x 12'1"	114 sq. ft	Yes
6	Garage	11'4" x 19'1"	216 sq. ft	No
7	Deck	26'1" x 22'0"	366 sq. ft	No

485 Union Street, Braintree, Norfolk County, Massachusetts,  
United States, 02184



## Room dimensions

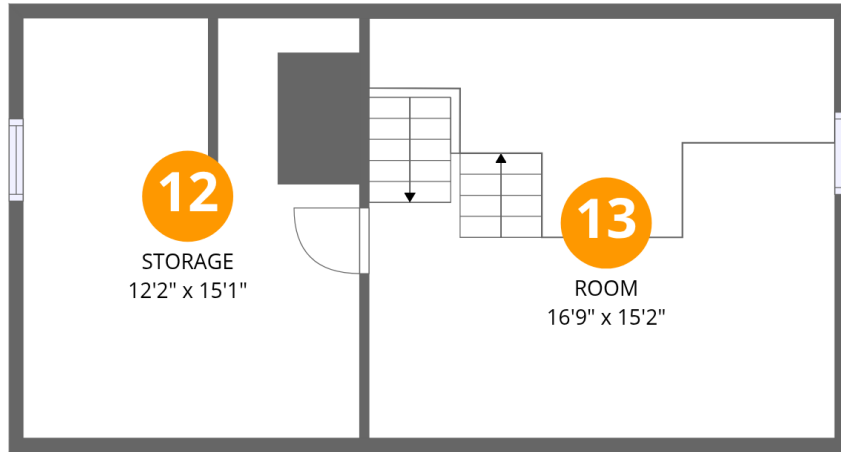
Floor 3

Total:374sqft

Excluded: 0sqft

#		Dimensions	sqft	Counted as living area
8	Bath	6'3" x 6'8"	41 sq. ft	Yes
9	Primary Bedroom	10'3" x 11'6"	118 sq. ft	Yes
10	Bedroom	12'1" x 11'6"	140 sq. ft	Yes
11	Hall	6'3" x 4'6"	22 sq. ft	Yes

485 Union Street, Braintree, Norfolk County, Massachusetts,  
United States, 02184



## Room dimensions

Floor 4

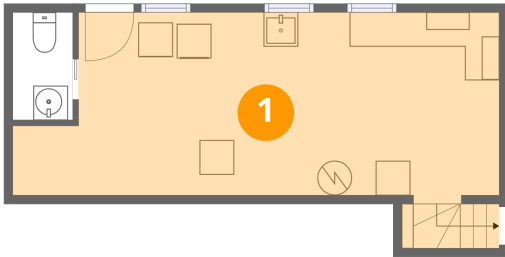
Total:259sqft

Excluded: 184sqft

#		Dimensions	sqft	Counted as living area
12	Storage	12'2" x 15'1"	181 sq. ft	No
13	Room	16'9" x 15'2"	254 sq. ft	Yes

485 Union Street, Braintree, Norfolk County, Massachusetts,  
United States, 02184

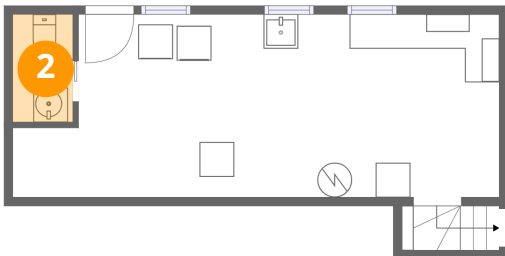
## 1 Floor 1 - Utility



Dimensions: 28'3" x 11'1"  
Area: 290 sq. ft  
Counted as living area: No

Heated: Yes  
Finished: No  
Enclosed: Yes  
Contiguous: Yes  
Permitted: Yes  
Wet space: No  
Addition: No  
Conversion: No

## 2 Floor 1 - Bath

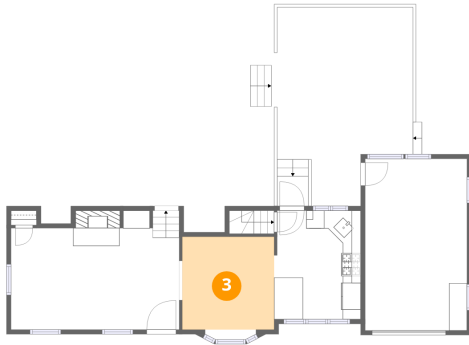


Dimensions: 3'6" x 6'3"  
Area: 22 sq. ft  
Counted as living area: No

Heated: Yes  
Finished: Yes  
Enclosed: Yes  
Contiguous: No  
Permitted: Yes  
Wet space: Yes  
Addition: No  
Conversion: No

485 Union Street, Braintree, Norfolk County, Massachusetts,  
United States, 02184

### 3 Floor 2 - Dining Area



Dimensions: 10'3" x 10'4"  
Area: 105 sq. ft  
Counted as living area: Yes

Heated: Yes  
Finished: Yes  
Enclosed: Yes  
Contiguous: Yes  
Permitted: Yes  
Wet space: No  
Addition: No  
Conversion: No

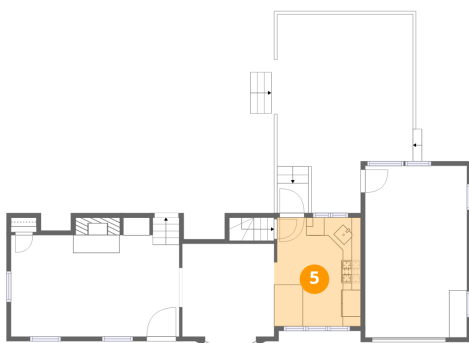
### 4 Floor 2 - Living Room



Dimensions: 18'8" x 13'3"  
Area: 232 sq. ft  
Counted as living area: Yes

Heated: Yes  
Finished: Yes  
Enclosed: Yes  
Contiguous: Yes  
Permitted: Yes  
Wet space: No  
Addition: No  
Conversion: No

### 5 Floor 2 - Kitchen

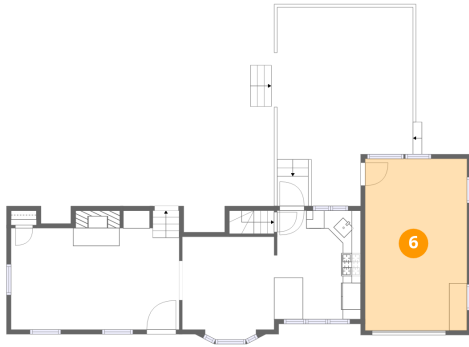


Dimensions: 9'7" x 12'1"  
Area: 114 sq. ft  
Counted as living area: Yes

Heated: Yes  
Finished: Yes  
Enclosed: Yes  
Contiguous: Yes  
Permitted: Yes  
Wet space: No  
Addition: No  
Conversion: No

485 Union Street, Braintree, Norfolk County, Massachusetts,  
United States, 02184

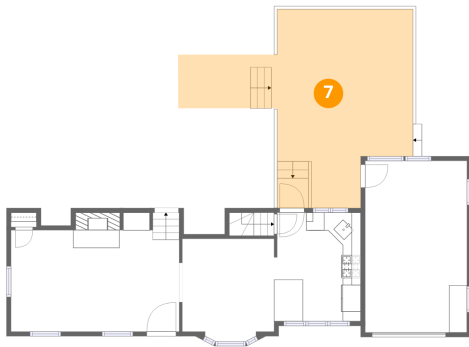
## 6 Floor 2 - Garage



Dimensions: 11'4" x 19'1"  
Area: 216 sq. ft  
Counted as living area: No

Heated: No  
Finished: No  
Enclosed: Yes  
Contiguous: Yes  
Permitted: Yes  
Wet space: No  
Addition: No  
Conversion: No

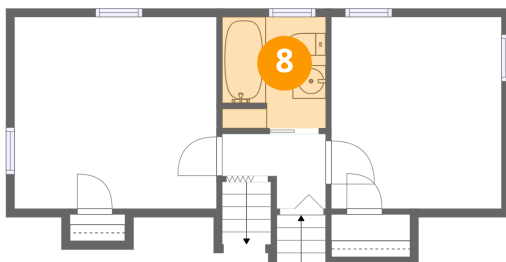
## 7 Floor 2 - Deck



Dimensions: 26'1" x 22'0"  
Area: 366 sq. ft  
Counted as living area: No

Heated: No  
Finished: No  
Enclosed: No  
Contiguous: Yes  
Permitted: Yes  
Wet space: No  
Addition: No  
Conversion: No

## 8 Floor 3 - Bath

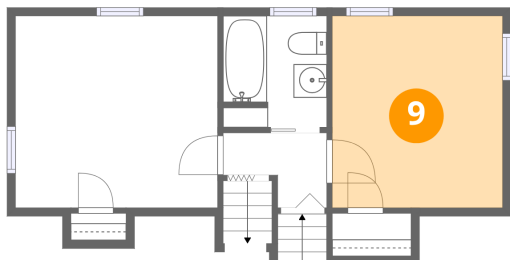


Dimensions: 6'3" x 6'8"  
Area: 41 sq. ft  
Counted as living area: Yes

Heated: Yes  
Finished: Yes  
Enclosed: Yes  
Contiguous: Yes  
Permitted: Yes  
Wet space: Yes  
Addition: No  
Conversion: No

485 Union Street, Braintree, Norfolk County, Massachusetts,  
United States, 02184

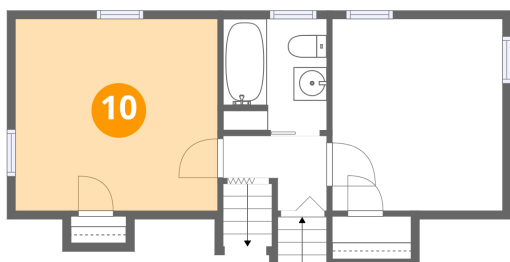
### 9 Floor 3 - Primary Bedroom



Dimensions: 10'3" x 11'6"  
Area: 118 sq. ft  
Counted as living area: Yes

Heated: Yes  
Finished: Yes  
Enclosed: Yes  
Contiguous: Yes  
Permitted: Yes  
Wet space: No  
Addition: No  
Conversion: No

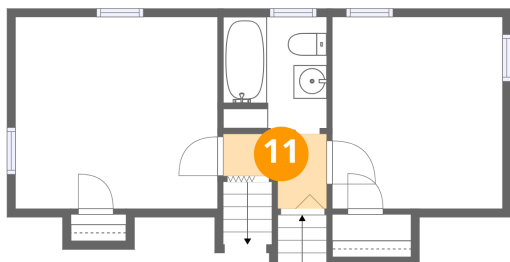
### 10 Floor 3 - Bedroom



Dimensions: 12'1" x 11'6"  
Area: 140 sq. ft  
Counted as living area: Yes

Heated: Yes  
Finished: Yes  
Enclosed: Yes  
Contiguous: Yes  
Permitted: Yes  
Wet space: No  
Addition: No  
Conversion: No

### 11 Floor 3 - Hall

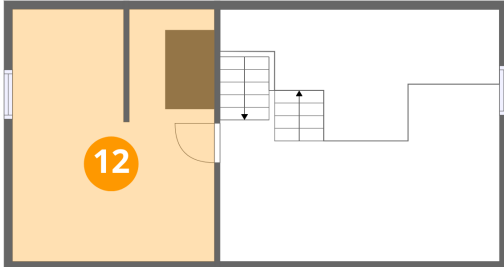


Dimensions: 6'3" x 4'6"  
Area: 22 sq. ft  
Counted as living area: Yes

Heated: Yes  
Finished: Yes  
Enclosed: Yes  
Contiguous: Yes  
Permitted: Yes  
Wet space: No  
Addition: No  
Conversion: No

485 Union Street, Braintree, Norfolk County, Massachusetts,  
United States, 02184

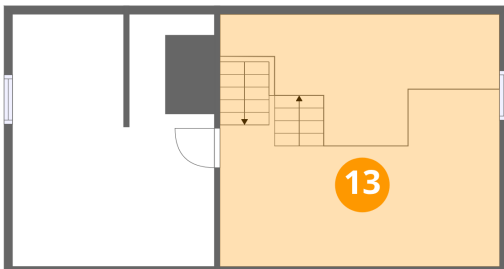
## 12 Floor 4 - Storage



Dimensions: 12'2" x 15'1"  
Area: 181 sq. ft  
Counted as living area: No

Heated: No  
Finished: No  
Enclosed: No  
Contiguous: Yes  
Permitted: Yes  
Wet space: No  
Addition: No  
Conversion: No

## 13 Floor 4 - Room



Dimensions: 16'9" x 15'2"  
Area: 254 sq. ft  
Counted as living area: Yes

Heated: Yes  
Finished: Yes  
Enclosed: Yes  
Contiguous: Yes  
Permitted: Yes  
Wet space: No  
Addition: No  
Conversion: No