

Home report

625 Elm Avenue Southeast, Belmont, Roanoke, Roanoke city,
Virginia, United States, 24013



Total Area: 1885 sq. ft

Below Ground: 0 sq. ft, Floor 2: 968 sq. ft, Floor 3: 917 sq. ft, Floor 4: 0 sq. ft
Excluded: Basement 311 sq. ft, Porch 330 sq. ft, Deck 323 sq. ft, Low ceiling 592 sq. ft,
Attic 325 sq. ft, Walls: 233 sq. ft

Property summary



4
Floors

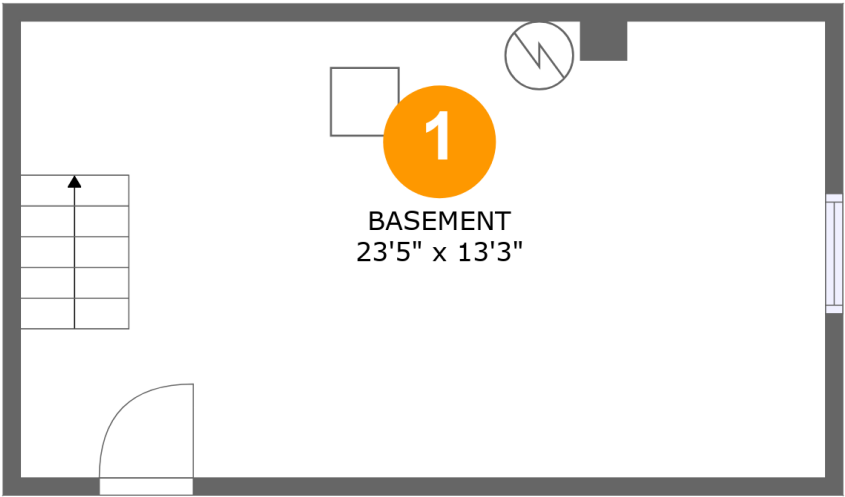


4
Bedrooms



2
Bathrooms

625 Elm Avenue Southeast, Belmont, Roanoke, Roanoke city,
Virginia, United States, 24013



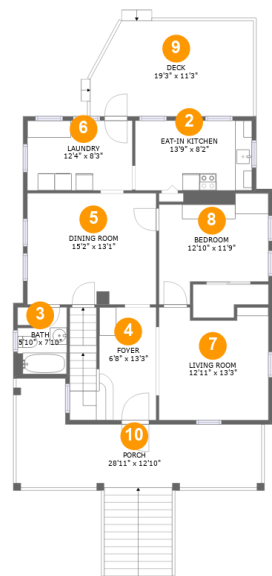
Room dimensions

Floor 1 Below ground Total:0sqft Excluded: 311sqft

#		Max Dimensions	sqft	Included
1	Basement	23'5" x 13'3"	311 sq. ft	No

Home report

625 Elm Avenue Southeast, Belmont, Roanoke, Roanoke city,
Virginia, United States, 24013



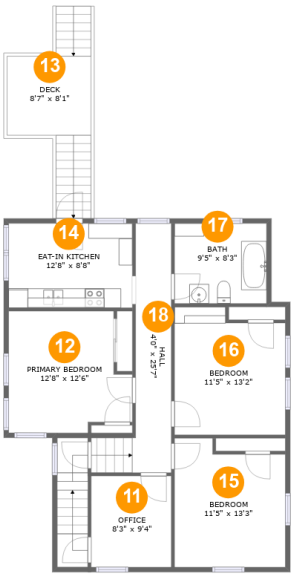
Room dimensions

Floor 2Total:968sqft Excluded: 534sqft

#		Max Dimensions	sqft	Included
2	Eat-in Kitchen	13'9" x 8'2"	113 sq. ft	Yes
3	Bath	5'10" x 7'10"	40 sq. ft	Yes
4	Foyer	6'8" x 13'3"	133 sq. ft	Yes
5	Dining Room	15'2" x 13'1"	199 sq. ft	Yes
6	Laundry	12'4" x 8'3"	102 sq. ft	Yes
7	Living Room	12'11" x 13'3"	163 sq. ft	Yes
8	Bedroom	12'10" x 11'9"	132 sq. ft	Yes
9	Deck	19'3" x 11'3"	204 sq. ft	No
10	Porch	28'11" x 12'10"	330 sq. ft	No

Home report

625 Elm Avenue Southeast, Belmont, Roanoke, Roanoke city,
Virginia, United States, 24013

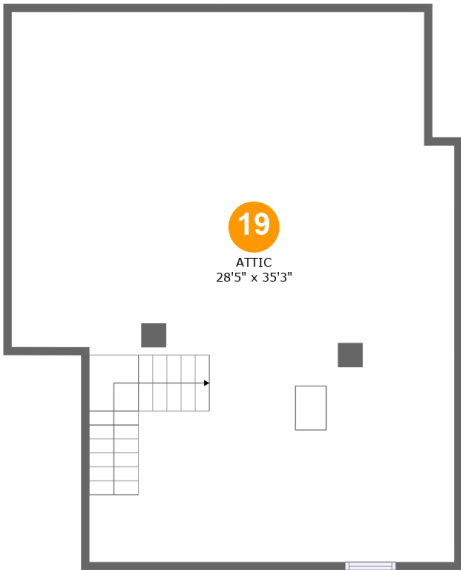


Room dimensions

Floor 3 Total:917sqft Excluded: 119sqft

#		Max Dimensions	sqft	Included
11	Office	8'3" x 9'4"	77 sq. ft	Yes
12	Primary Bedroom	12'8" x 12'6"	141 sq. ft	Yes
13	Deck	8'7" x 8'1"	119 sq. ft	No
14	Eat-in Kitchen	12'8" x 8'8"	110 sq. ft	Yes
15	Bedroom	11'5" x 13'3"	138 sq. ft	Yes
16	Bedroom	11'5" x 13'2"	139 sq. ft	Yes
17	Bath	9'5" x 8'3"	78 sq. ft	Yes
18	Hall	4'0" x 25'7"	110 sq. ft	Yes

625 Elm Avenue Southeast, Belmont, Roanoke, Roanoke city,
Virginia, United States, 24013



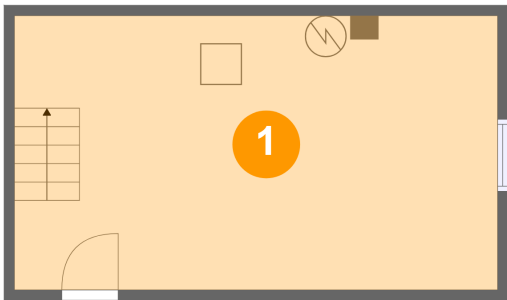
Room dimensions

Floor 4 Total:0sqft Excluded: 917sqft

#		Max Dimensions	sqft	Included
19	Attic	28'5" x 35'3"	325 sq. ft	No

625 Elm Avenue Southeast, Belmont, Roanoke, Roanoke city,
Virginia, United States, 24013

1 Floor 1 - Basement



Max Dimensions: 23'5" x 13'3"
Calculated Area: 311 sq. ft
Included: No

Heated: Yes
Finished: No
Enclosed: Yes
Contiguous: Yes
Permitted: Yes
Wet space: No
Addition: No
Conversion: No

2 Floor 2 - Eat-in Kitchen



Max Dimensions: 13'9" x 8'2"
Calculated Area: 113 sq. ft
Included: Yes

Heated: Yes
Finished: Yes
Enclosed: Yes
Contiguous: Yes
Permitted: Yes
Wet space: No
Addition: No
Conversion: No

625 Elm Avenue Southeast, Belmont, Roanoke, Roanoke city,
Virginia, United States, 24013

3 Floor 2 - Bath



Max Dimensions: 5'10" x 7'10"
Calculated Area: 40 sq. ft
Included: Yes

Heated: Yes
Finished: Yes
Enclosed: Yes
Contiguous: Yes
Permitted: Yes
Wet space: Yes
Addition: No
Conversion: No

4 Floor 2 - Foyer



Max Dimensions: 6'8" x 13'3"
Calculated Area: 133 sq. ft
Included: Yes

Heated: Yes
Finished: Yes
Enclosed: Yes
Contiguous: Yes
Permitted: Yes
Wet space: No
Addition: No
Conversion: No

5 Floor 2 - Dining Room



Max Dimensions: 15'2" x 13'1"
Calculated Area: 199 sq. ft
Included: Yes

Heated: Yes
Finished: Yes
Enclosed: Yes
Contiguous: Yes
Permitted: Yes
Wet space: No
Addition: No
Conversion: No

625 Elm Avenue Southeast, Belmont, Roanoke, Roanoke city,
Virginia, United States, 24013

6 Floor 2 - Laundry



Max Dimensions: 12'4" x 8'3"
Calculated Area: 102 sq. ft
Included: Yes

Heated: Yes
Finished: Yes
Enclosed: Yes
Contiguous: Yes
Permitted: Yes
Wet space: No
Addition: No
Conversion: No

7 Floor 2 - Living Room



Max Dimensions: 12'11" x 13'3"
Calculated Area: 163 sq. ft
Included: Yes

Heated: Yes
Finished: Yes
Enclosed: Yes
Contiguous: Yes
Permitted: Yes
Wet space: No
Addition: No
Conversion: No

8 Floor 2 - Bedroom



Max Dimensions: 12'10" x 11'9"
Calculated Area: 132 sq. ft
Included: Yes

Heated: Yes
Finished: Yes
Enclosed: Yes
Contiguous: Yes
Permitted: Yes
Wet space: No
Addition: No
Conversion: No

625 Elm Avenue Southeast, Belmont, Roanoke, Roanoke city,
Virginia, United States, 24013

9 Floor 2 - Deck



Max Dimensions: 19'3" x 11'3"
Calculated Area: 204 sq. ft
Included: No

Heated: No
Finished: Yes
Enclosed: No
Contiguous: Yes
Permitted: Yes
Wet space: No
Addition: No
Conversion: No

10 Floor 2 - Porch



Max Dimensions: 28'11" x 12'10"
Calculated Area: 330 sq. ft
Included: No

Heated: No
Finished: Yes
Enclosed: No
Contiguous: Yes
Permitted: Yes
Wet space: No
Addition: No
Conversion: No

11 Floor 3 - Office



Max Dimensions: 8'3" x 9'4"
Calculated Area: 77 sq. ft
Included: Yes

Heated: Yes
Finished: Yes
Enclosed: Yes
Contiguous: Yes
Permitted: Yes
Wet space: No
Addition: No
Conversion: No

625 Elm Avenue Southeast, Belmont, Roanoke, Roanoke city,
Virginia, United States, 24013

12 Floor 3 - Primary Bedroom



Max Dimensions: 12'8" x 12'6"
Calculated Area: 141 sq. ft
Included: Yes

Heated: Yes
Finished: Yes
Enclosed: Yes
Contiguous: Yes
Permitted: Yes
Wet space: No
Addition: No
Conversion: No

13 Floor 3 - Deck



Max Dimensions: 8'7" x 8'1"
Calculated Area: 119 sq. ft
Included: No

Heated: No
Finished: Yes
Enclosed: No
Contiguous: Yes
Permitted: Yes
Wet space: No
Addition: No
Conversion: No

14 Floor 3 - Eat-in Kitchen

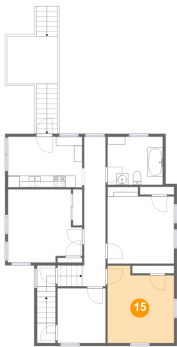


Max Dimensions: 12'8" x 8'8"
Calculated Area: 110 sq. ft
Included: Yes

Heated: Yes
Finished: Yes
Enclosed: Yes
Contiguous: Yes
Permitted: Yes
Wet space: No
Addition: No
Conversion: No

625 Elm Avenue Southeast, Belmont, Roanoke, Roanoke city,
Virginia, United States, 24013

15 Floor 3 - Bedroom



Max Dimensions: 11'5" x 13'3"
Calculated Area: 138 sq. ft
Included: Yes

Heated: Yes
Finished: Yes
Enclosed: Yes
Contiguous: Yes
Permitted: Yes
Wet space: No
Addition: No
Conversion: No

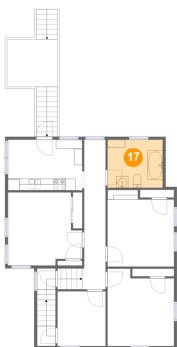
16 Floor 3 - Bedroom



Max Dimensions: 11'5" x 13'2"
Calculated Area: 139 sq. ft
Included: Yes

Heated: Yes
Finished: Yes
Enclosed: Yes
Contiguous: Yes
Permitted: Yes
Wet space: No
Addition: No
Conversion: No

17 Floor 3 - Bath

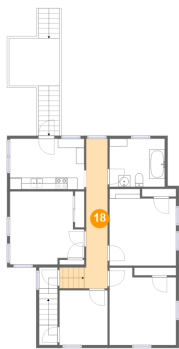


Max Dimensions: 9'5" x 8'3"
Calculated Area: 78 sq. ft
Included: Yes

Heated: Yes
Finished: Yes
Enclosed: Yes
Contiguous: Yes
Permitted: Yes
Wet space: Yes
Addition: No
Conversion: No

625 Elm Avenue Southeast, Belmont, Roanoke, Roanoke city,
Virginia, United States, 24013

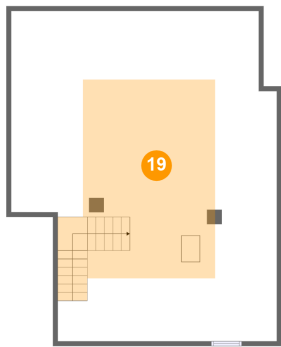
18 Floor 3 - Hall



Max Dimensions: 4'0" x 25'7"
Calculated Area: 110 sq. ft
Included: Yes

Heated: Yes
Finished: Yes
Enclosed: Yes
Contiguous: Yes
Permitted: Yes
Wet space: No
Addition: No
Conversion: No

19 Floor 4 - Attic



Max Dimensions: 28'5" x 35'3"
Calculated Area: 325 sq. ft
Included: No

Heated: No
Finished: No
Enclosed: Yes
Contiguous: Yes
Permitted: Yes
Wet space: No
Addition: No
Conversion: No