

Home data report

1506 High Valley Way, Lenoir, Caldwell County, North Carolina, United States, 28645



Total Area: 4351 sq. ft

Basement: 1986 sq. ft, 1st Floor: 2365 sq. ft

Excluded: Room 189 sq. ft, Utility 126 sq. ft, Garage 808 sq. ft, Patio 814 sq. ft, Screened porch 174 sq. ft, Porch 215 sq. ft, Deck 632 sq. ft, Walls: 304 sq. ft

Property summary



Home data report

**1506 High Valley Way, Lenoir, Caldwell County, North Carolina,
United States, 28645**



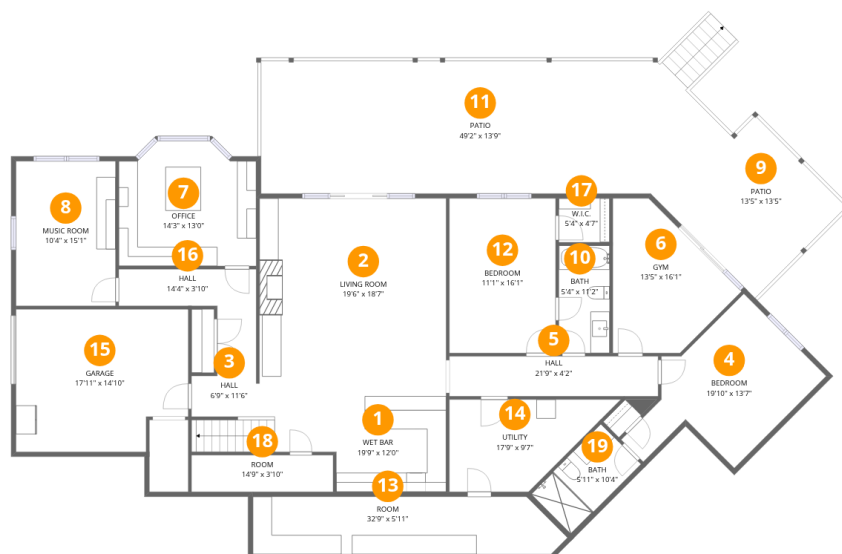
1
Half baths



2
Garages

Home data report

1506 High Valley Way, Lenoir, Caldwell County, North Carolina, United States, 28645



Room dimensions

Floor 1 Below grade

Total:1986sqft

Excluded: 1380sqft

#		Dimensions	sqft	Counted as living area
1	Wet Bar	19'9" x 12'0"	203 sq. ft	Yes
2	Living Room	19'6" x 18'7"	361 sq. ft	Yes
3	Hall	6'9" x 11'6"	81 sq. ft	Yes
4	Bedroom	19'10" x 13'7"	187 sq. ft	Yes
5	Hall	21'9" x 4'2"	91 sq. ft	Yes
6	Gym	13'5" x 16'1"	149 sq. ft	Yes
7	Office	14'3" x 13'0"	173 sq. ft	Yes
8	Music Room	10'4" x 15'1"	157 sq. ft	Yes
9	Patio	13'5" x 13'5"	180 sq. ft	No
10	Bath	5'4" x 11'2"	59 sq. ft	Yes
11	Patio	49'2" x 13'9"	635 sq. ft	No

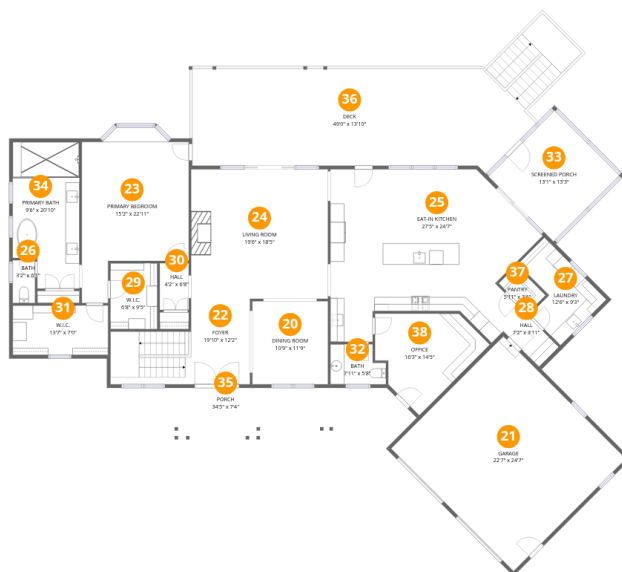
Home data report

**1506 High Valley Way, Lenoir, Caldwell County, North Carolina,
United States, 28645**

#		Dimensions	sqft	Counted as living area
12	Bedroom	11'1" x 16'1"	179 sq. ft	Yes
13	Room	32'9" x 5'11"	186 sq. ft	No
14	Utility	17'9" x 9'7"	126 sq. ft	No
15	Garage	17'11" x 14'10"	251 sq. ft	No
16	Hall	14'4" x 3'10"	55 sq. ft	Yes
17	W.I.C.	5'4" x 4'7"	24 sq. ft	Yes
18	Room	14'9" x 3'10"	57 sq. ft	Yes
19	Bath	5'11" x 10'4"	61 sq. ft	Yes

Home data report

1506 High Valley Way, Lenoir, Caldwell County, North Carolina, United States, 28645



Room dimensions

Floor 2

Total:2365sqft

Excluded: 1578sqft

#		Dimensions	sqft	Counted as living area
20	Dining Room	10'9" x 11'9"	127 sq. ft	Yes
21	Garage	22'7" x 24'7"	557 sq. ft	No
22	Foyer	19'10" x 12'2"	188 sq. ft	Yes
23	Primary Bedroom	15'2" x 22'11"	296 sq. ft	Yes
24	Living Room	19'6" x 18'5"	359 sq. ft	Yes
25	Eat-in Kitchen	27'5" x 24'7"	571 sq. ft	Yes
26	Bath	3'2" x 6'1"	19 sq. ft	Yes
27	Laundry	12'6" x 9'3"	91 sq. ft	Yes
28	Hall	7'2" x 3'11"	29 sq. ft	Yes
29	W.I.C.	6'8" x 9'5"	63 sq. ft	Yes
30	Hall	4'2" x 6'8"	27 sq. ft	Yes

Home data report

**1506 High Valley Way, Lenoir, Caldwell County, North Carolina,
United States, 28645**

#		Dimensions	sqft	Counted as living area
31	W.I.C.	13'7" x 7'0"	96 sq. ft	Yes
32	Bath	7'11" x 5'8"	40 sq. ft	Yes
33	Screened Porch	13'1" x 13'3"	174 sq. ft	No
34	Primary Bath	9'6" x 20'10"	183 sq. ft	Yes
35	Porch	34'5" x 7'4"	215 sq. ft	No
36	Deck	49'0" x 13'10"	632 sq. ft	No
37	Pantry	5'11" x 3'6"	21 sq. ft	Yes
38	Office	16'3" x 14'5"	152 sq. ft	Yes

1506 High Valley Way, Lenoir, Caldwell County, North Carolina,
United States, 28645

1 Floor 1 - Wet Bar



Dimensions: 19'9" x 12'0"
Area: 203 sq. ft
Counted as living area: Yes

Heated: Yes
Finished: Yes
Enclosed: Yes
Contiguous: Yes
Permitted: Yes
Wet space: No
Addition: No
Conversion: No

2 Floor 1 - Living Room



Dimensions: 19'6" x 18'7"
Area: 361 sq. ft
Counted as living area: Yes

Heated: Yes
Finished: Yes
Enclosed: Yes
Contiguous: Yes
Permitted: Yes
Wet space: No
Addition: No
Conversion: No

3 Floor 1 - Hall



Dimensions: 6'9" x 11'6"
Area: 81 sq. ft
Counted as living area: Yes

Heated: Yes
Finished: Yes
Enclosed: Yes
Contiguous: Yes
Permitted: Yes
Wet space: No
Addition: No
Conversion: No

4 Floor 1 - Bedroom



Dimensions: 19'10" x 13'7"
Area: 187 sq. ft
Counted as living area: Yes

Heated: Yes
Finished: Yes
Enclosed: Yes
Contiguous: Yes
Permitted: Yes
Wet space: No
Addition: No
Conversion: No

5 Floor 1 - Hall



Dimensions: 21'9" x 4'2"
Area: 91 sq. ft
Counted as living area: Yes

Heated: Yes
Finished: Yes
Enclosed: Yes
Contiguous: Yes
Permitted: Yes
Wet space: No
Addition: No
Conversion: No

6 Floor 1 - Gym



Dimensions: 13'5" x 16'1"
Area: 149 sq. ft
Counted as living area: Yes

Heated: Yes
Finished: Yes
Enclosed: Yes
Contiguous: Yes
Permitted: Yes
Wet space: No
Addition: No
Conversion: No

7 Floor 1 - Office



Dimensions: 14'3" x 13'0"
Area: 173 sq. ft
Counted as living area: Yes

Heated: Yes
Finished: Yes
Enclosed: Yes
Contiguous: Yes
Permitted: Yes
Wet space: No
Addition: No
Conversion: No

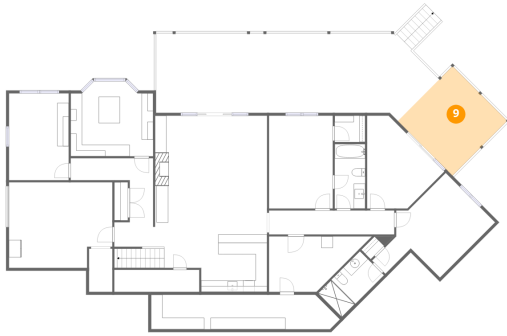
8 Floor 1 - Music Room



Dimensions: 10'4" x 15'1"
Area: 157 sq. ft
Counted as living area: Yes

Heated: Yes
Finished: Yes
Enclosed: Yes
Contiguous: Yes
Permitted: Yes
Wet space: No
Addition: No
Conversion: No

9 Floor 1 - Patio



Dimensions: 13'5" x 13'5"
Area: 180 sq. ft
Counted as living area: No

Heated: No
Finished: No
Enclosed: No
Contiguous: Yes
Permitted: Yes
Wet space: No
Addition: No
Conversion: No

10 Floor 1 - Bath



Dimensions: 5'4" x 11'2"
Area: 59 sq. ft
Counted as living area: Yes

Heated: Yes
Finished: Yes
Enclosed: Yes
Contiguous: Yes
Permitted: Yes
Wet space: Yes
Addition: No
Conversion: No

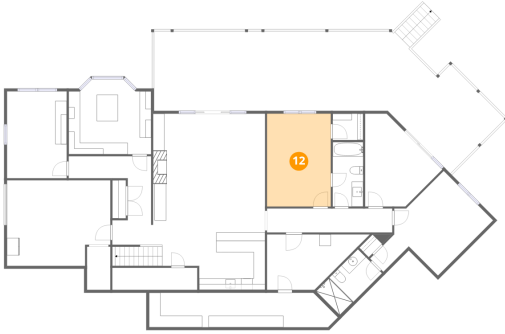
11 Floor 1 - Patio



Dimensions: 49'2" x 13'9"
Area: 635 sq. ft
Counted as living area: No

Heated: No
Finished: No
Enclosed: No
Contiguous: Yes
Permitted: Yes
Wet space: No
Addition: No
Conversion: No

12 Floor 1 - Bedroom



Dimensions: 11'1" x 16'1"
Area: 179 sq. ft
Counted as living area: Yes

Heated: Yes
Finished: Yes
Enclosed: Yes
Contiguous: Yes
Permitted: Yes
Wet space: No
Addition: No
Conversion: No

13 Floor 1 - Room



Dimensions: 32'9" x 5'11"
Area: 186 sq. ft
Counted as living area: No

Heated: Yes
Finished: No
Enclosed: Yes
Contiguous: Yes
Permitted: Yes
Wet space: No
Addition: No
Conversion: No

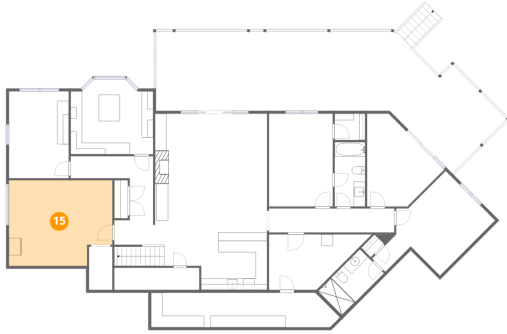
14 Floor 1 - Utility



Dimensions: 17'9" x 9'7"
Area: 126 sq. ft
Counted as living area: No

Heated: Yes
Finished: No
Enclosed: Yes
Contiguous: Yes
Permitted: Yes
Wet space: No
Addition: No
Conversion: No

15 Floor 1 - Garage



Dimensions: 17'11" x 14'10"
Area: 251 sq. ft
Counted as living area: No

Heated: No
Finished: No
Enclosed: Yes
Contiguous: Yes
Permitted: Yes
Wet space: No
Addition: No
Conversion: No

16 Floor 1 - Hall



Dimensions: 14'4" x 3'10"
Area: 55 sq. ft
Counted as living area: Yes

Heated: Yes
Finished: Yes
Enclosed: Yes
Contiguous: Yes
Permitted: Yes
Wet space: No
Addition: No
Conversion: No

17 Floor 1 - W.I.C.



Dimensions: 5'4" x 4'7"
Area: 24 sq. ft
Counted as living area: Yes

Heated: Yes
Finished: Yes
Enclosed: Yes
Contiguous: Yes
Permitted: Yes
Wet space: No
Addition: No
Conversion: No

1506 High Valley Way, Lenoir, Caldwell County, North Carolina,
United States, 28645

18 Floor 1 - Room



Dimensions: 14'9" x 3'10"
Area: 57 sq. ft
Counted as living area: Yes

Heated: Yes
Finished: Yes
Enclosed: Yes
Contiguous: Yes
Permitted: Yes
Wet space: No
Addition: No
Conversion: No

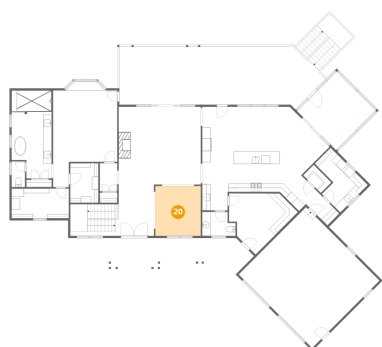
19 Floor 1 - Bath



Dimensions: 5'11" x 10'4"
Area: 61 sq. ft
Counted as living area: Yes

Heated: Yes
Finished: Yes
Enclosed: Yes
Contiguous: Yes
Permitted: Yes
Wet space: Yes
Addition: No
Conversion: No

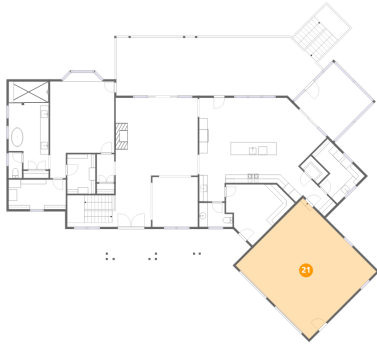
20 Floor 2 - Dining Room



Dimensions: 10'9" x 11'9"
Area: 127 sq. ft
Counted as living area: Yes

Heated: Yes
Finished: Yes
Enclosed: Yes
Contiguous: Yes
Permitted: Yes
Wet space: No
Addition: No
Conversion: No

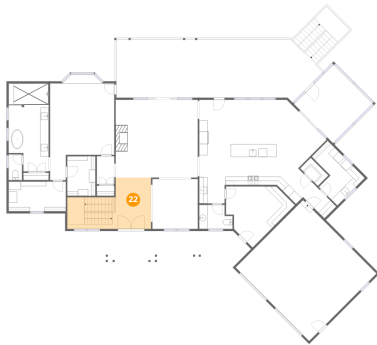
21 Floor 2 - Garage



Dimensions: 22'7" x 24'7"
Area: 557 sq. ft
Counted as living area: No

Heated: No
Finished: No
Enclosed: Yes
Contiguous: Yes
Permitted: Yes
Wet space: No
Addition: No
Conversion: No

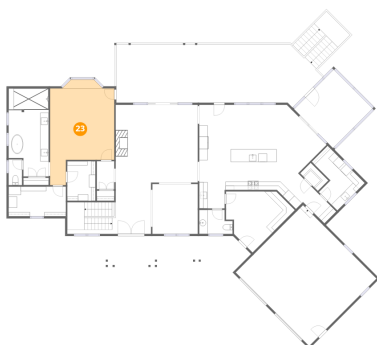
22 Floor 2 - Foyer



Dimensions: 19'10" x 12'2"
Area: 188 sq. ft
Counted as living area: Yes

Heated: Yes
Finished: Yes
Enclosed: Yes
Contiguous: Yes
Permitted: Yes
Wet space: No
Addition: No
Conversion: No

23 Floor 2 - Primary Bedroom

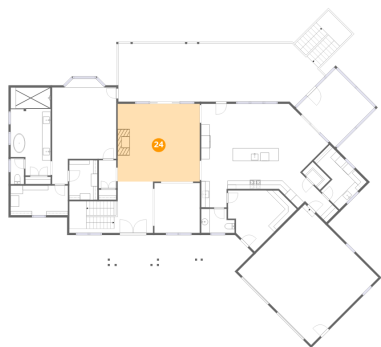


Dimensions: 15'2" x 22'11"
Area: 296 sq. ft
Counted as living area: Yes

Heated: Yes
Finished: Yes
Enclosed: Yes
Contiguous: Yes
Permitted: Yes
Wet space: No
Addition: No
Conversion: No

1506 High Valley Way, Lenoir, Caldwell County, North Carolina,
United States, 28645

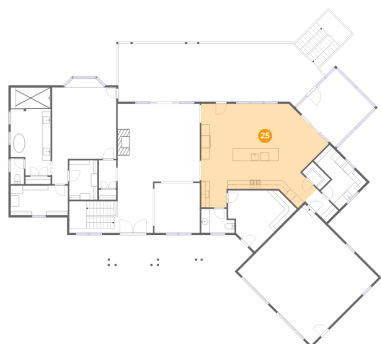
24 Floor 2 - Living Room



Dimensions: 19'6" x 18'5"
Area: 359 sq. ft
Counted as living area: Yes

Heated: Yes
Finished: Yes
Enclosed: Yes
Contiguous: Yes
Permitted: Yes
Wet space: No
Addition: No
Conversion: No

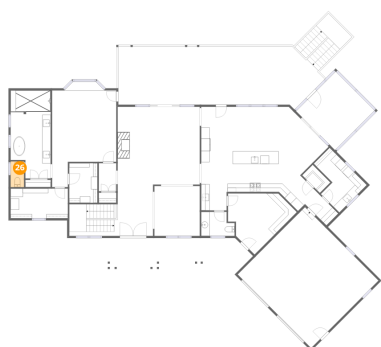
25 Floor 2 - Eat-in Kitchen



Dimensions: 27'5" x 24'7"
Area: 571 sq. ft
Counted as living area: Yes

Heated: Yes
Finished: Yes
Enclosed: Yes
Contiguous: Yes
Permitted: Yes
Wet space: No
Addition: No
Conversion: No

26 Floor 2 - Bath



Dimensions: 3'2" x 6'1"
Area: 19 sq. ft
Counted as living area: Yes

Heated: Yes
Finished: Yes
Enclosed: Yes
Contiguous: Yes
Permitted: Yes
Wet space: Yes
Addition: No
Conversion: No

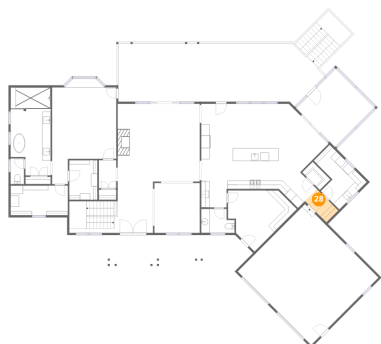
27 Floor 2 - Laundry



Dimensions: 12'6" x 9'3"
Area: 91 sq. ft
Counted as living area: Yes

Heated: Yes
Finished: Yes
Enclosed: Yes
Contiguous: Yes
Permitted: Yes
Wet space: No
Addition: No
Conversion: No

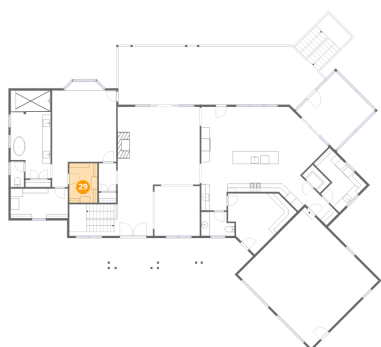
28 Floor 2 - Hall



Dimensions: 7'2" x 3'11"
Area: 29 sq. ft
Counted as living area: Yes

Heated: Yes
Finished: Yes
Enclosed: Yes
Contiguous: Yes
Permitted: Yes
Wet space: No
Addition: No
Conversion: No

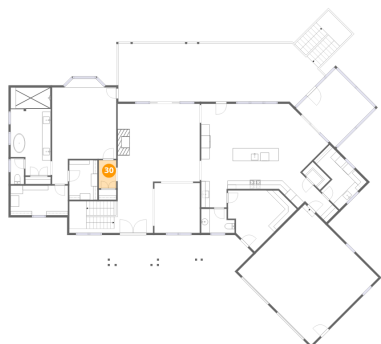
29 Floor 2 - W.I.C.



Dimensions: 6'8" x 9'5"
Area: 63 sq. ft
Counted as living area: Yes

Heated: Yes
Finished: Yes
Enclosed: Yes
Contiguous: Yes
Permitted: Yes
Wet space: No
Addition: No
Conversion: No

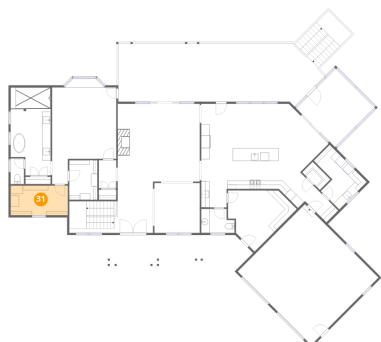
30 Floor 2 - Hall



Dimensions: 4'2" x 6'8"
Area: 27 sq. ft
Counted as living area: Yes

Heated: Yes
Finished: Yes
Enclosed: Yes
Contiguous: Yes
Permitted: Yes
Wet space: No
Addition: No
Conversion: No

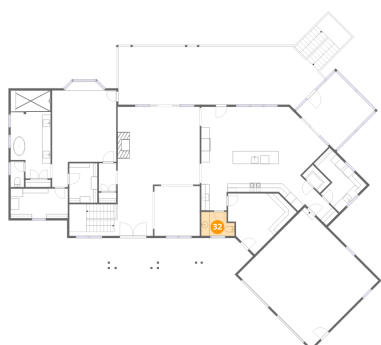
31 Floor 2 - W.I.C.



Dimensions: 13'7" x 7'0"
Area: 96 sq. ft
Counted as living area: Yes

Heated: Yes
Finished: Yes
Enclosed: Yes
Contiguous: Yes
Permitted: Yes
Wet space: No
Addition: No
Conversion: No

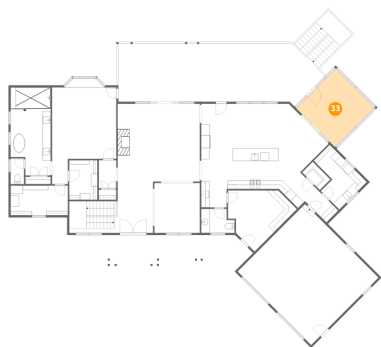
32 Floor 2 - Bath



Dimensions: 7'11" x 5'8"
Area: 40 sq. ft
Counted as living area: Yes

Heated: Yes
Finished: Yes
Enclosed: Yes
Contiguous: Yes
Permitted: Yes
Wet space: Yes
Addition: No
Conversion: No

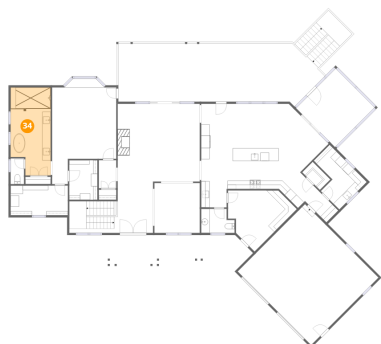
33 Floor 2 - Screened Porch



Dimensions: 13'1" x 13'3"
Area: 174 sq. ft
Counted as living area: No

Heated: No
Finished: No
Enclosed: No
Contiguous: Yes
Permitted: Yes
Wet space: No
Addition: No
Conversion: No

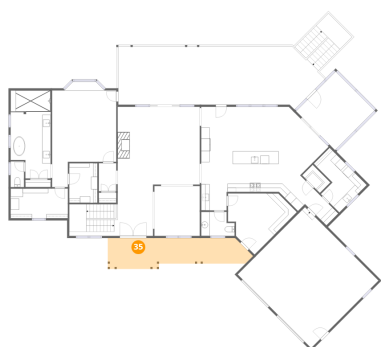
34 Floor 2 - Primary Bath



Dimensions: 9'6" x 20'10"
Area: 183 sq. ft
Counted as living area: Yes

Heated: Yes
Finished: Yes
Enclosed: Yes
Contiguous: Yes
Permitted: Yes
Wet space: Yes
Addition: No
Conversion: No

35 Floor 2 - Porch

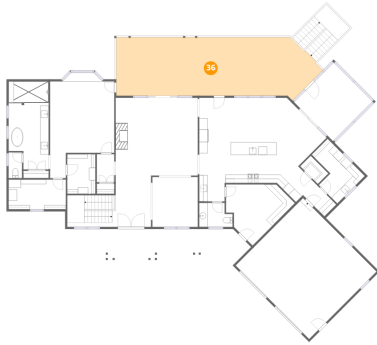


Dimensions: 34'5" x 7'4"
Area: 215 sq. ft
Counted as living area: No

Heated: No
Finished: No
Enclosed: No
Contiguous: Yes
Permitted: Yes
Wet space: No
Addition: No
Conversion: No

1506 High Valley Way, Lenoir, Caldwell County, North Carolina,
United States, 28645

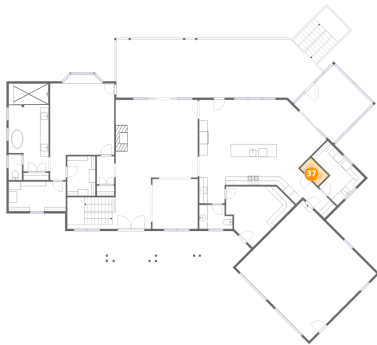
36 Floor 2 - Deck



Dimensions: 49'0" x 13'10"
Area: 632 sq. ft
Counted as living area: No

Heated: No
Finished: No
Enclosed: No
Contiguous: Yes
Permitted: Yes
Wet space: No
Addition: No
Conversion: No

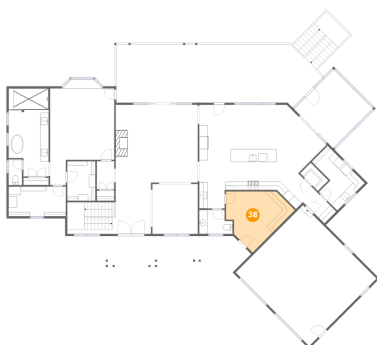
37 Floor 2 - Pantry



Dimensions: 5'11" x 3'6"
Area: 21 sq. ft
Counted as living area: Yes

Heated: Yes
Finished: Yes
Enclosed: Yes
Contiguous: Yes
Permitted: Yes
Wet space: No
Addition: No
Conversion: No

38 Floor 2 - Office



Dimensions: 16'3" x 14'5"
Area: 152 sq. ft
Counted as living area: Yes

Heated: Yes
Finished: Yes
Enclosed: Yes
Contiguous: Yes
Permitted: Yes
Wet space: No
Addition: No
Conversion: No