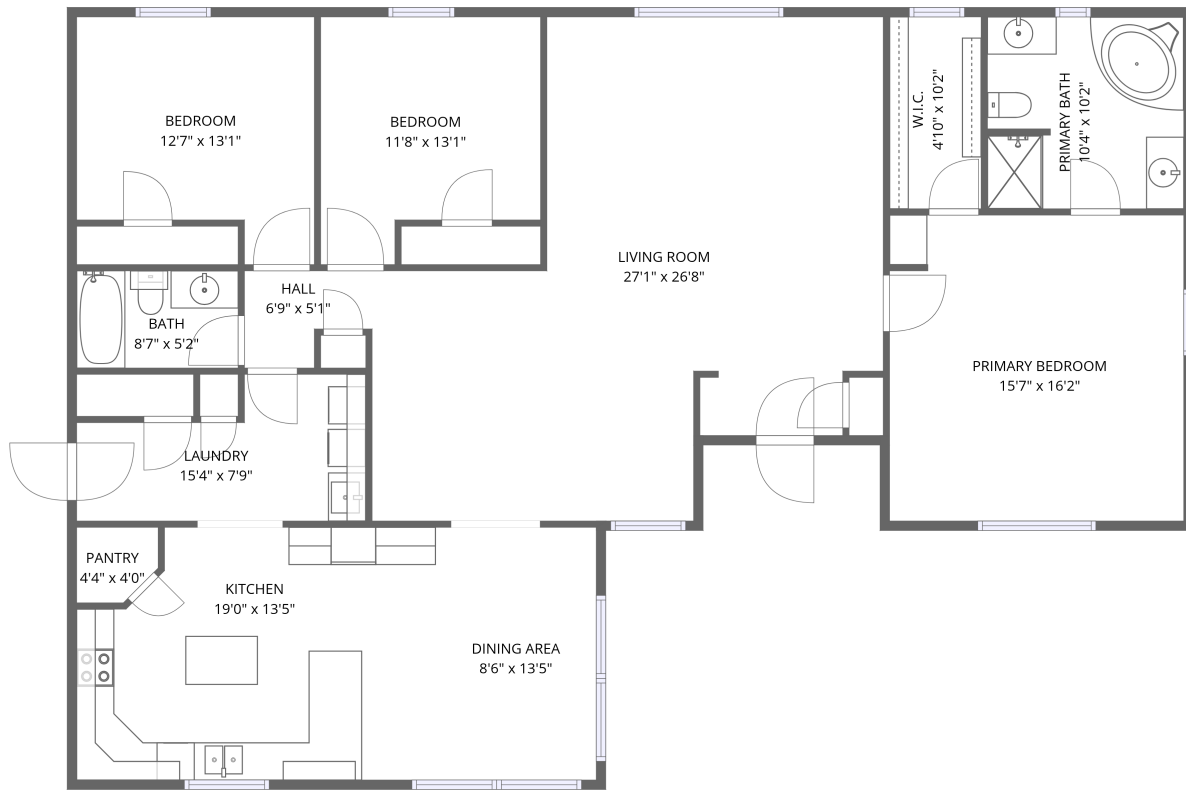


# Home data report

## 703 Ziebach St, Belle Fourche, SD, US



1st floor

**Total Area: 1895 sq. ft**

1st Floor: 1895 sq. ft

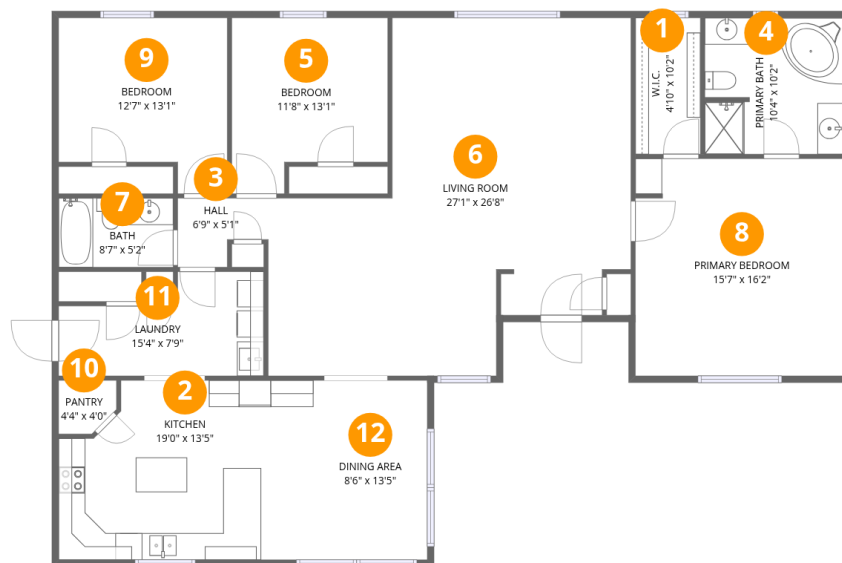
Excluded: Walls: 105 sq. ft

### Property summary

 **1** Floors

 **3** Bedrooms

 **2** Bathrooms



## Room dimensions

Floor 1

Total: 1895 sqft Excluded: 0 sqft

#		Dimensions	sqft	Counted as living area
1	W.I.C.	4'10" x 10'2"	49 sq. ft	Yes
2	Kitchen	19'0" x 13'5"	236 sq. ft	Yes
3	Hall	6'9" x 5'1"	28 sq. ft	Yes
4	Primary Bath	10'4" x 10'2"	104 sq. ft	Yes
5	Bedroom	11'8" x 13'1"	134 sq. ft	Yes
6	Living Room	27'1" x 26'8"	544 sq. ft	Yes
7	Bath	8'7" x 5'2"	44 sq. ft	Yes
8	Primary Bedroom	15'7" x 16'2"	252 sq. ft	Yes
9	Bedroom	12'7" x 13'1"	144 sq. ft	Yes
10	Pantry	4'4" x 4'0"	16 sq. ft	Yes
11	Laundry	15'4" x 7'9"	96 sq. ft	Yes

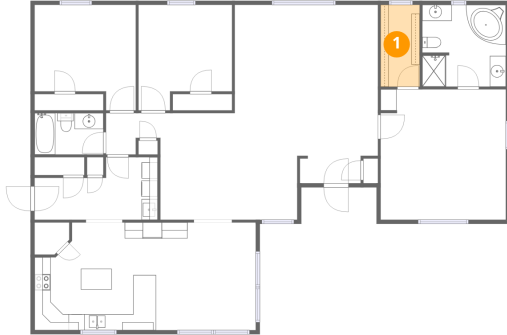
Home data report

**703 Ziebach St,Belle Fourche,SD,US**

#		Dimensions	sqft	Counted as living area
12	Dining Area	8'6" x 13'5"	114 sq. ft	Yes

**1 Floor 1 - W.I.C.**

---

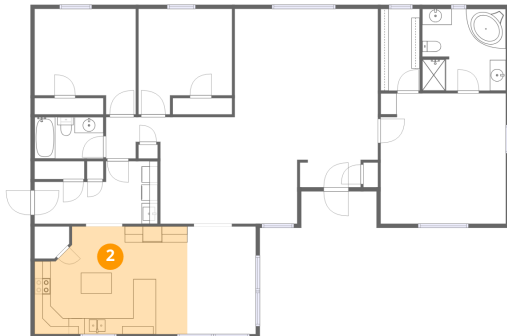


**Dimensions:** 4'10" x 10'2"  
**Area:** 49 sq. ft  
**Counted as living area:** Yes

**Heated:** Yes  
**Finished:** Yes  
**Enclosed:** Yes  
**Contiguous:** Yes  
**Permitted:** Yes  
**Wet space:** No  
**Addition:** No  
**Conversion:** No

**2 Floor 1 - Kitchen**

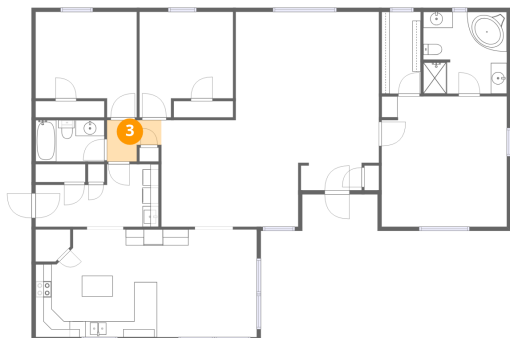
---



**Dimensions:** 19'0" x 13'5"  
**Area:** 236 sq. ft  
**Counted as living area:** Yes

**Heated:** Yes  
**Finished:** Yes  
**Enclosed:** Yes  
**Contiguous:** Yes  
**Permitted:** Yes  
**Wet space:** No  
**Addition:** No  
**Conversion:** No

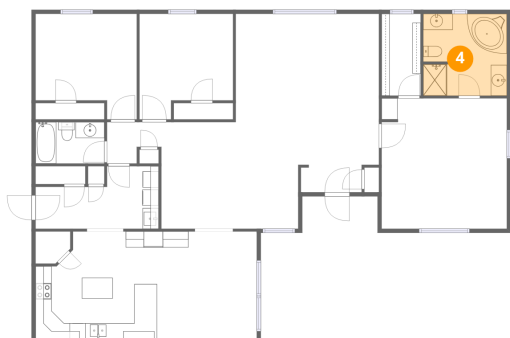
### 3 Floor 1 - Hall



Dimensions: 6'9" x 5'1"  
Area: 28 sq. ft  
Counted as living area: Yes

Heated: Yes  
Finished: Yes  
Enclosed: Yes  
Contiguous: Yes  
Permitted: Yes  
Wet space: No  
Addition: No  
Conversion: No

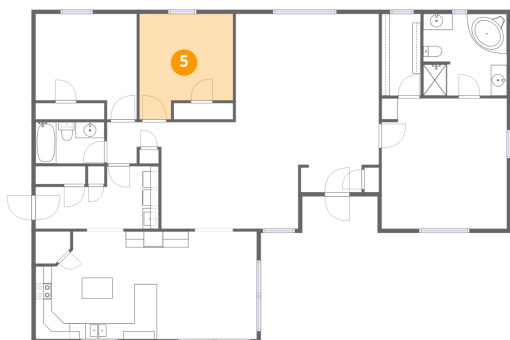
### 4 Floor 1 - Primary Bath



Dimensions: 10'4" x 10'2"  
Area: 104 sq. ft  
Counted as living area: Yes

Heated: Yes  
Finished: Yes  
Enclosed: Yes  
Contiguous: Yes  
Permitted: Yes  
Wet space: Yes  
Addition: No  
Conversion: No

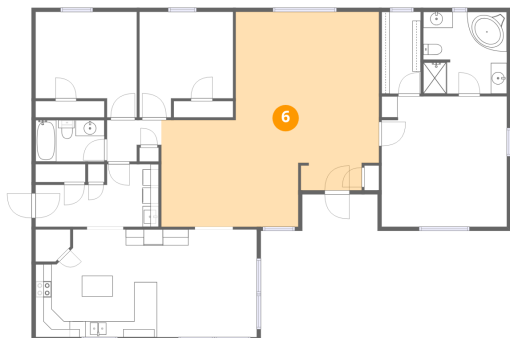
### 5 Floor 1 - Bedroom



Dimensions: 11'8" x 13'1"  
Area: 134 sq. ft  
Counted as living area: Yes

Heated: Yes  
Finished: Yes  
Enclosed: Yes  
Contiguous: Yes  
Permitted: Yes  
Wet space: No  
Addition: No  
Conversion: No

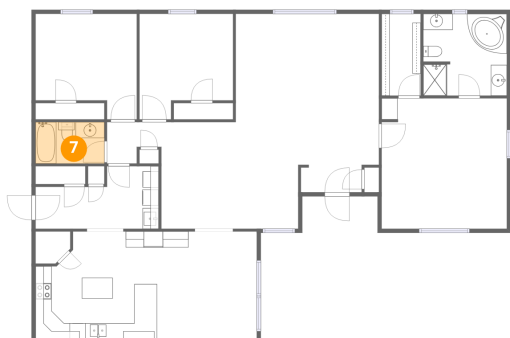
### 6 Floor 1 - Living Room



Dimensions: 27'1" x 26'8"  
Area: 544 sq. ft  
Counted as living area: Yes

Heated: Yes  
Finished: Yes  
Enclosed: Yes  
Contiguous: Yes  
Permitted: Yes  
Wet space: No  
Addition: No  
Conversion: No

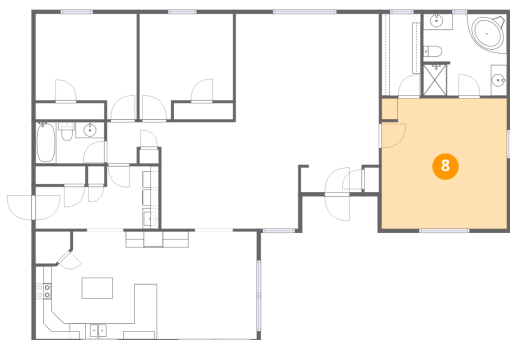
### 7 Floor 1 - Bath



Dimensions: 8'7" x 5'2"  
Area: 44 sq. ft  
Counted as living area: Yes

Heated: Yes  
Finished: Yes  
Enclosed: Yes  
Contiguous: Yes  
Permitted: Yes  
Wet space: Yes  
Addition: No  
Conversion: No

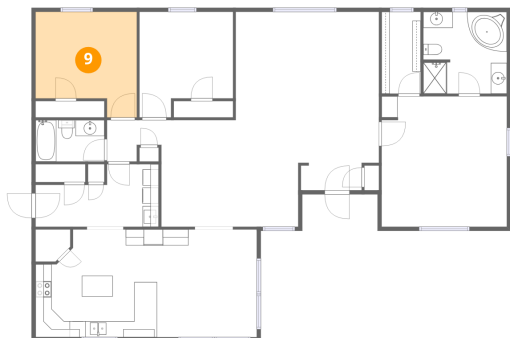
### 8 Floor 1 - Primary Bedroom



Dimensions: 15'7" x 16'2"  
Area: 252 sq. ft  
Counted as living area: Yes

Heated: Yes  
Finished: Yes  
Enclosed: Yes  
Contiguous: Yes  
Permitted: Yes  
Wet space: No  
Addition: No  
Conversion: No

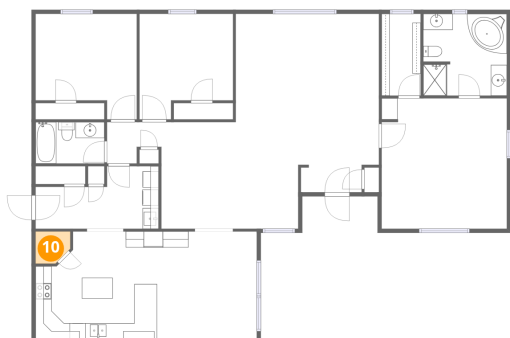
**9** Floor 1 - Bedroom



Dimensions: 12'7" x 13'1"  
Area: 144 sq. ft  
Counted as living area: Yes

Heated: Yes  
Finished: Yes  
Enclosed: Yes  
Contiguous: Yes  
Permitted: Yes  
Wet space: No  
Addition: No  
Conversion: No

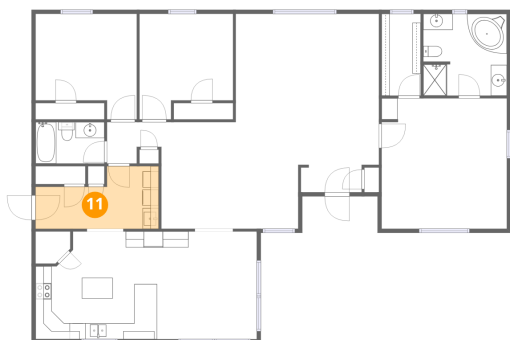
**10** Floor 1 - Pantry



Dimensions: 4'4" x 4'0"  
Area: 16 sq. ft  
Counted as living area: Yes

Heated: Yes  
Finished: Yes  
Enclosed: Yes  
Contiguous: Yes  
Permitted: Yes  
Wet space: No  
Addition: No  
Conversion: No

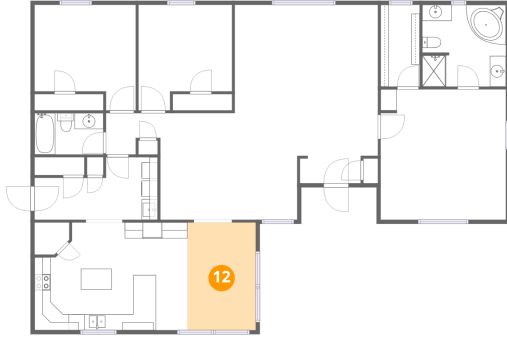
**11** Floor 1 - Laundry



Dimensions: 15'4" x 7'9"  
Area: 96 sq. ft  
Counted as living area: Yes

Heated: Yes  
Finished: Yes  
Enclosed: Yes  
Contiguous: Yes  
Permitted: Yes  
Wet space: No  
Addition: No  
Conversion: No

## 12 Floor 1 - Dining Area



**Dimensions:** 8'6" x 13'5"  
**Area:** 114 sq. ft  
**Counted as living area:** Yes

**Heated:** Yes  
**Finished:** Yes  
**Enclosed:** Yes  
**Contiguous:** Yes  
**Permitted:** Yes  
**Wet space:** No  
**Addition:** No  
**Conversion:** No