

Home data report

10299 Gast Road, Bridgman, Michigan 49106, United States



Total Area: 2453 sq. ft

Basement: 763 sq. ft, 1st Floor: 1690 sq. ft, 2nd Floor: 0 sq. ft

Excluded: Utility 260 sq. ft, Room 633 sq. ft, Garage 536 sq. ft, Screened porch 421 sq. ft, Pole barn 758 sq. ft, Walls: 294 sq. ft

Property summary

 **3** Floors

 **3** Bedrooms

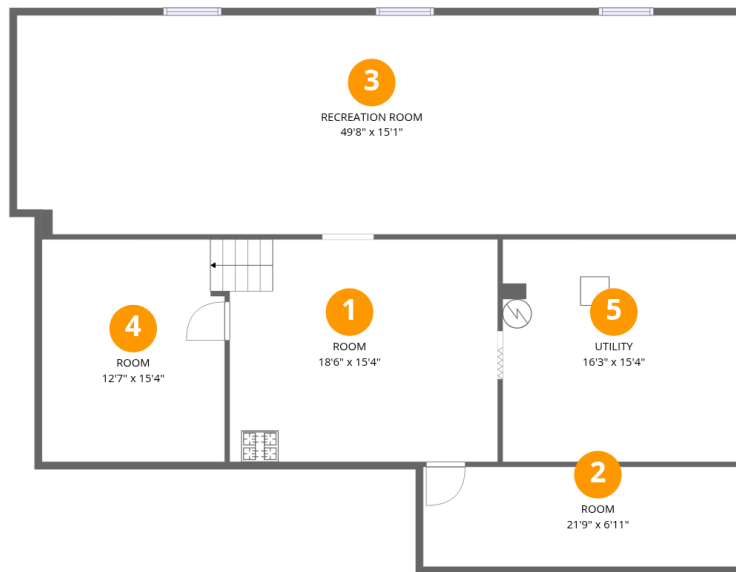
 **1** Bathrooms

Home data report

10299 Gast Road, Bridgman, Michigan 49106, United States

 **1**
Half baths

 **1**
Garages



Room dimensions

Floor 1 Below grade

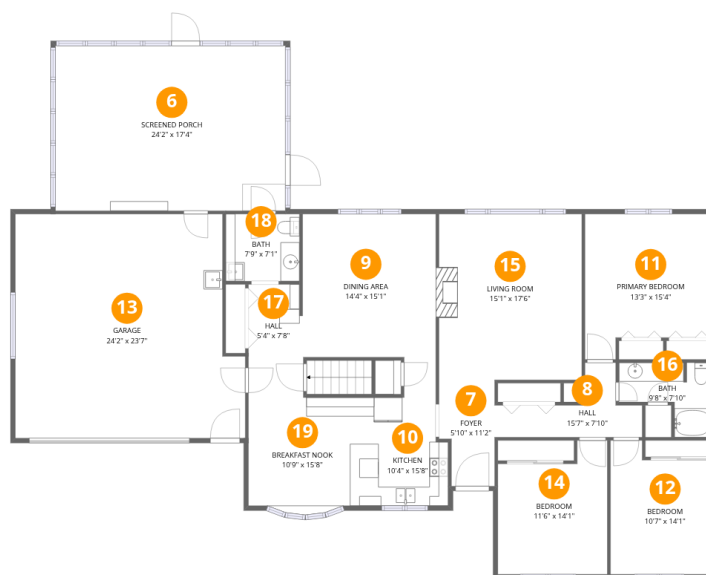
Total:763sqft

Excluded: 893sqft

#		Dimensions	sqft	Counted as living area
1	Room	18'6" x 15'4"	283 sq. ft	No
2	Room	21'9" x 6'11"	150 sq. ft	No
3	Recreation Room	49'8" x 15'1"	749 sq. ft	Yes
4	Room	12'7" x 15'4"	193 sq. ft	No
5	Utility	16'3" x 15'4"	249 sq. ft	No

Home data report

10299 Gast Road, Bridgman, Michigan 49106, United States



Room dimensions

Floor 2

Total:1690sqft Excluded: 957sqft

#		Dimensions	sqft	Counted as living area
6	Screened Porch	24'2" x 17'4"	420 sq. ft	No
7	Foyer	5'10" x 11'2"	66 sq. ft	Yes
8	Hall	15'7" x 7'10"	122 sq. ft	Yes
9	Dining Area	14'4" x 15'1"	217 sq. ft	Yes
10	Kitchen	10'4" x 15'8"	162 sq. ft	Yes
11	Primary Bedroom	13'3" x 15'4"	203 sq. ft	Yes
12	Bedroom	10'7" x 14'1"	149 sq. ft	Yes
13	Garage	24'2" x 23'7"	572 sq. ft	No
14	Bedroom	11'6" x 14'1"	162 sq. ft	Yes
15	Living Room	15'1" x 17'6"	263 sq. ft	Yes
16	Bath	9'8" x 7'10"	76 sq. ft	Yes

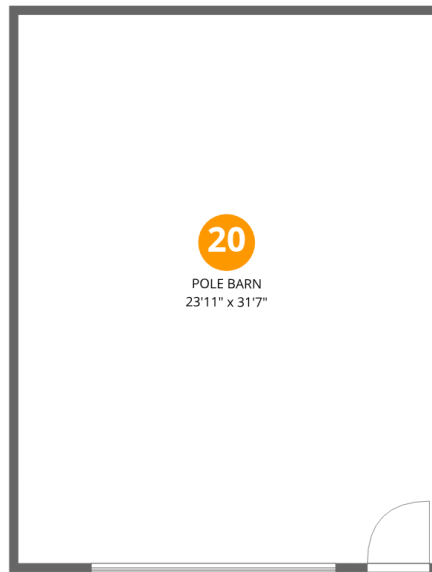
Home data report

10299 Gast Road, Bridgman, Michigan 49106, United States

#		Dimensions	sqft	Counted as living area
17	Hall	5'4" x 7'8"	41 sq. ft	Yes
18	Bath	7'9" x 7'1"	55 sq. ft	Yes
19	Breakfast Nook	10'9" x 15'8"	168 sq. ft	Yes

Home data report

10299 Gast Road, Bridgman, Michigan 49106, United States



Room dimensions

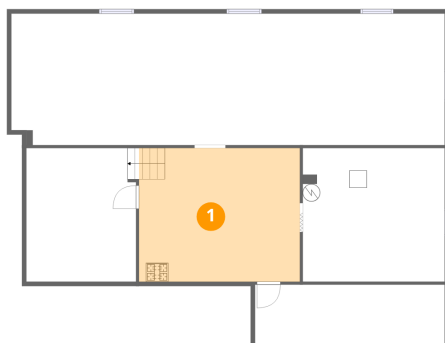
Floor 3

Total:0sqft

Excluded: 758sqft

#		Dimensions	sqft	Counted as living area
20	Pole Barn	23'11" x 31'7"	757 sq. ft	No

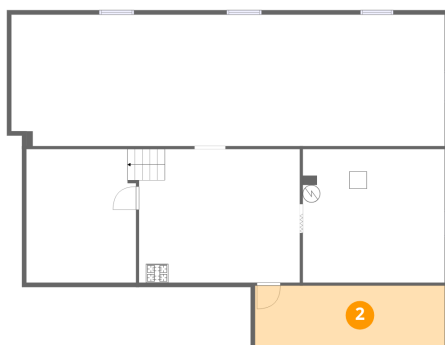
1 Floor 1 - Room



Dimensions: 18'6" x 15'4"
Area: 283 sq. ft
Counted as living area: No

Heated: Yes
Finished: No
Enclosed: Yes
Contiguous: Yes
Permitted: Yes
Wet space: No
Addition: No
Conversion: No

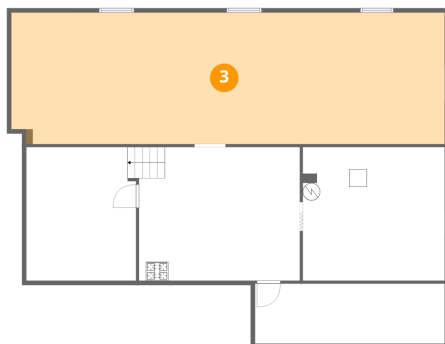
2 Floor 1 - Room



Dimensions: 21'9" x 6'11"
Area: 150 sq. ft
Counted as living area: No

Heated: Yes
Finished: No
Enclosed: Yes
Contiguous: Yes
Permitted: Yes
Wet space: No
Addition: No
Conversion: No

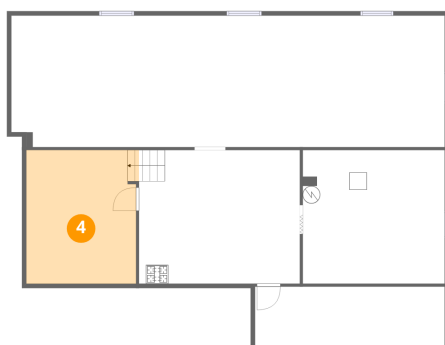
3 Floor 1 - Recreation Room



Dimensions: 49'8" x 15'1"
Area: 749 sq. ft
Counted as living area: No

Heated: Yes
Finished: Yes
Enclosed: Yes
Contiguous: No
Permitted: Yes
Wet space: No
Addition: No
Conversion: No

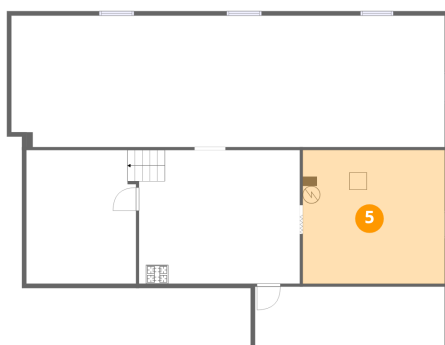
4 Floor 1 - Room



Dimensions: 12'7" x 15'4"
Area: 193 sq. ft
Counted as living area: No

Heated: Yes
Finished: No
Enclosed: Yes
Contiguous: Yes
Permitted: Yes
Wet space: No
Addition: No
Conversion: No

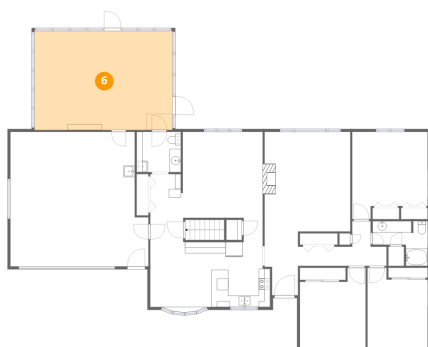
5 Floor 1 - Utility



Dimensions: 16'3" x 15'4"
Area: 249 sq. ft
Counted as living area: No

Heated: Yes
Finished: No
Enclosed: Yes
Contiguous: Yes
Permitted: Yes
Wet space: No
Addition: No
Conversion: No

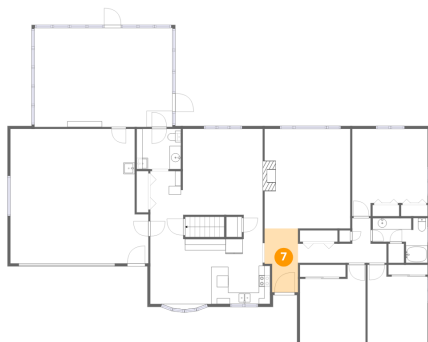
6 Floor 2 - Screened Porch



Dimensions: 24'2" x 17'4"
Area: 420 sq. ft
Counted as living area: No

Heated: No
Finished: No
Enclosed: No
Contiguous: Yes
Permitted: Yes
Wet space: No
Addition: No
Conversion: No

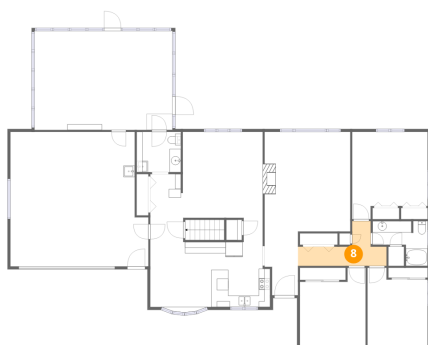
7 Floor 2 - Foyer



Dimensions: 5'10" x 11'2"
Area: 66 sq. ft
Counted as living area: Yes

Heated: Yes
Finished: Yes
Enclosed: Yes
Contiguous: Yes
Permitted: Yes
Wet space: No
Addition: No
Conversion: No

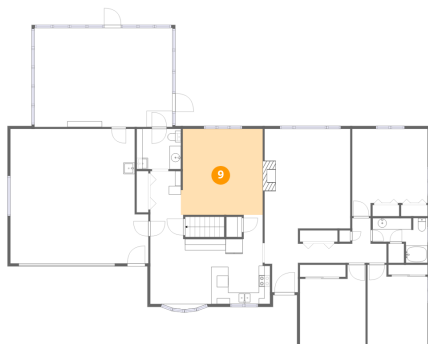
8 Floor 2 - Hall



Dimensions: 15'7" x 7'10"
Area: 122 sq. ft
Counted as living area: Yes

Heated: Yes
Finished: Yes
Enclosed: Yes
Contiguous: Yes
Permitted: Yes
Wet space: No
Addition: No
Conversion: No

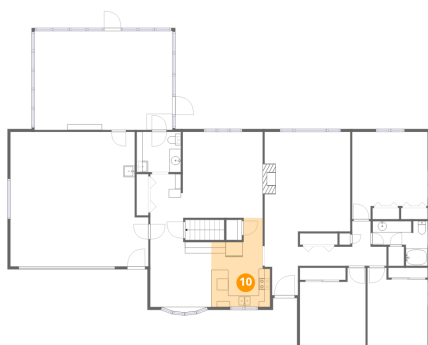
9 Floor 2 - Dining Area



Dimensions: 14'4" x 15'1"
Area: 217 sq. ft
Counted as living area: Yes

Heated: Yes
Finished: Yes
Enclosed: Yes
Contiguous: Yes
Permitted: Yes
Wet space: No
Addition: No
Conversion: No

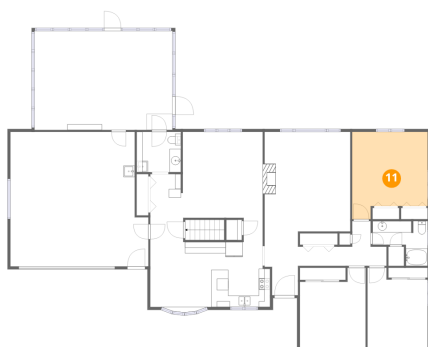
10 Floor 2 - Kitchen



Dimensions: 10'4" x 15'8"
Area: 162 sq. ft
Counted as living area: Yes

Heated: Yes
Finished: Yes
Enclosed: Yes
Contiguous: Yes
Permitted: Yes
Wet space: No
Addition: No
Conversion: No

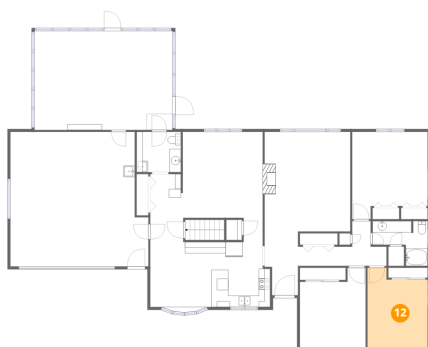
11 Floor 2 - Primary Bedroom



Dimensions: 13'3" x 15'4"
Area: 203 sq. ft
Counted as living area: Yes

Heated: Yes
Finished: Yes
Enclosed: Yes
Contiguous: Yes
Permitted: Yes
Wet space: No
Addition: No
Conversion: No

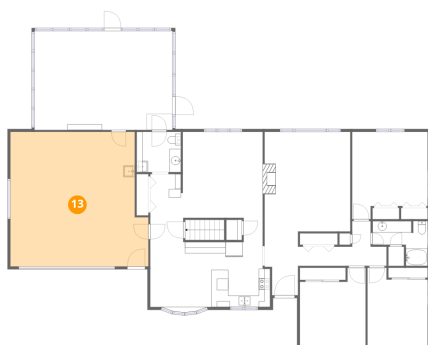
12 Floor 2 - Bedroom



Dimensions: 10'7" x 14'1"
Area: 149 sq. ft
Counted as living area: Yes

Heated: Yes
Finished: Yes
Enclosed: Yes
Contiguous: Yes
Permitted: Yes
Wet space: No
Addition: No
Conversion: No

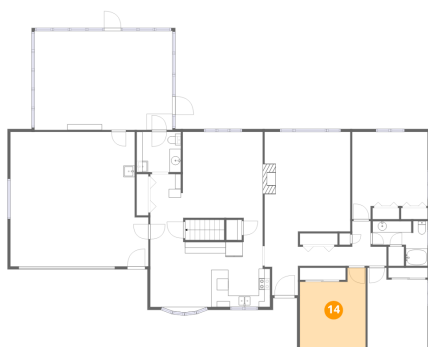
13 Floor 2 - Garage



Dimensions: 24'2" x 23'7"
Area: 572 sq. ft
Counted as living area: No

Heated: No
Finished: No
Enclosed: Yes
Contiguous: Yes
Permitted: Yes
Wet space: No
Addition: No
Conversion: No

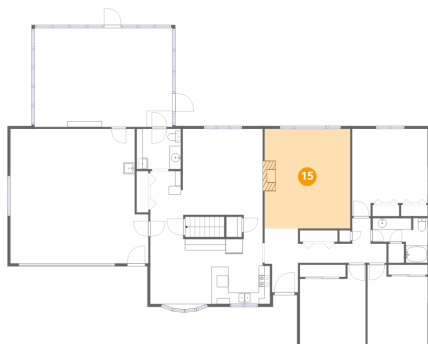
14 Floor 2 - Bedroom



Dimensions: 11'6" x 14'1"
Area: 162 sq. ft
Counted as living area: Yes

Heated: Yes
Finished: Yes
Enclosed: Yes
Contiguous: Yes
Permitted: Yes
Wet space: No
Addition: No
Conversion: No

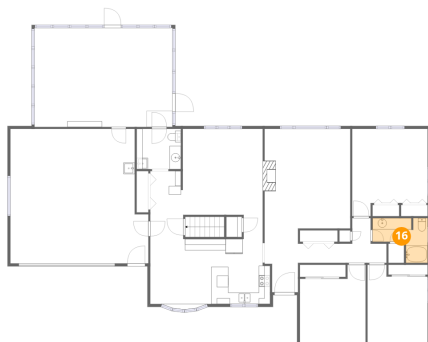
15 Floor 2 - Living Room



Dimensions: 15'1" x 17'6"
Area: 263 sq. ft
Counted as living area: Yes

Heated: Yes
Finished: Yes
Enclosed: Yes
Contiguous: Yes
Permitted: Yes
Wet space: No
Addition: No
Conversion: No

16 Floor 2 - Bath



Dimensions: 9'8" x 7'10"
Area: 76 sq. ft
Counted as living area: Yes

Heated: Yes
Finished: Yes
Enclosed: Yes
Contiguous: Yes
Permitted: Yes
Wet space: Yes
Addition: No
Conversion: No

17 Floor 2 - Hall



Dimensions: 5'4" x 7'8"
Area: 41 sq. ft
Counted as living area: Yes

Heated: Yes
Finished: Yes
Enclosed: Yes
Contiguous: Yes
Permitted: Yes
Wet space: No
Addition: No
Conversion: No

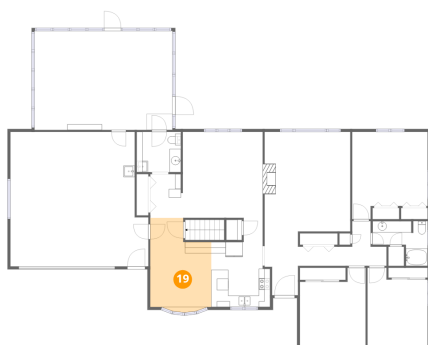
18 Floor 2 - Bath



Dimensions: 7'9" x 7'1"
Area: 55 sq. ft
Counted as living area: Yes

Heated: Yes
Finished: Yes
Enclosed: Yes
Contiguous: Yes
Permitted: Yes
Wet space: No
Addition: No
Conversion: No

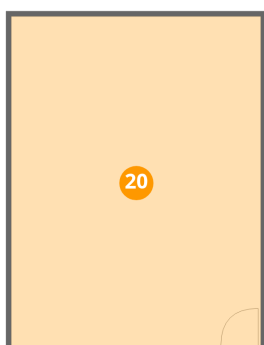
19 Floor 2 - Breakfast Nook



Dimensions: 10'9" x 15'8"
Area: 168 sq. ft
Counted as living area: Yes

Heated: Yes
Finished: Yes
Enclosed: Yes
Contiguous: Yes
Permitted: Yes
Wet space: No
Addition: No
Conversion: No

20 Floor 3 - Pole Barn



Dimensions: 23'11" x 31'7"
Area: 757 sq. ft
Counted as living area: No

Heated: No
Finished: No
Enclosed: Yes
Contiguous: Yes
Permitted: Yes
Wet space: No
Addition: No
Conversion: No