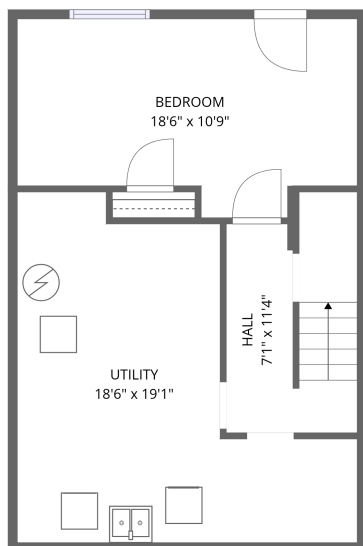
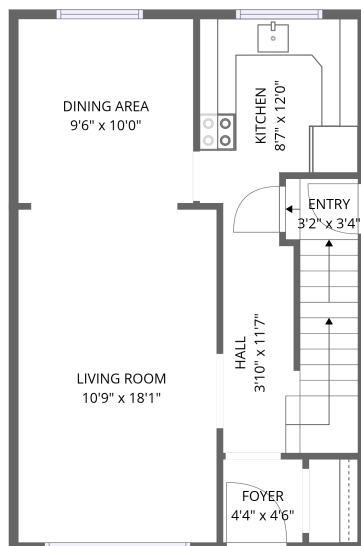


Home data report

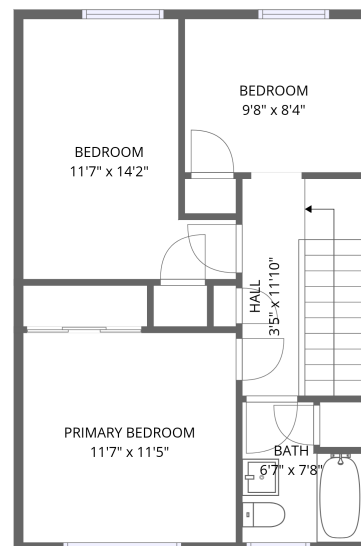
151 Riverdale Avenue, Old Ottawa South, Rideau Gardens,
Ottawa, Ontario, Canada, K1S 1R1



Basement



1st floor



2nd floor

Total Area: 1243 sq. ft

Basement: 192 sq. ft, 1st Floor: 525 sq. ft, 2nd Floor: 526 sq. ft

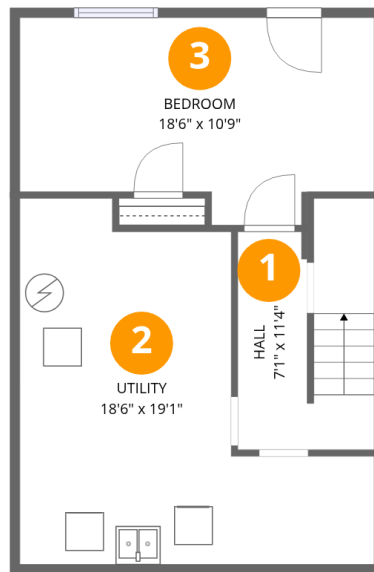
Excluded: Utility 247 sq. ft, Hall 86 sq. ft, Walls: 107 sq. ft

Property summary



Home data report

151 Riverdale Avenue, Old Ottawa South, Rideau Gardens,
Ottawa, Ontario, Canada, K1S 1R1



Room dimensions

Floor 1 Below grade

Total:192sqft

Excluded: 333sqft

#		Dimensions	sqft	Counted as living area
1	Hall	7'1" x 11'4"	81 sq. ft	No
2	Utility	18'6" x 19'1"	352 sq. ft	No
3	Bedroom	18'6" x 10'9"	199 sq. ft	Yes

Home data report

151 Riverdale Avenue, Old Ottawa South, Rideau Gardens,
Ottawa, Ontario, Canada, K1S 1R1



Room dimensions

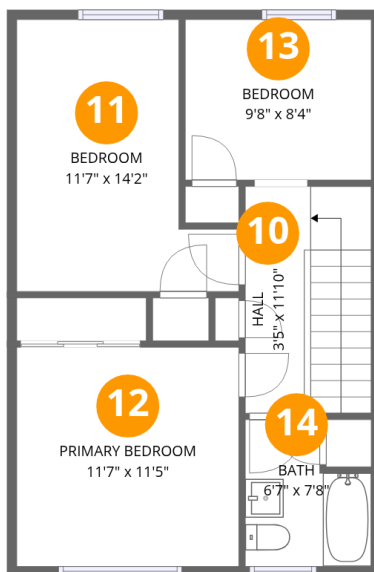
Floor 2

Total:525sqft Excluded: 0sqft

#		Dimensions	sqft	Counted as living area
4	Hall	3'10" x 11'7"	45 sq. ft	Yes
5	Kitchen	8'7" x 12'0"	103 sq. ft	Yes
6	Foyer	4'4" x 4'6"	20 sq. ft	Yes
7	Dining Area	9'6" x 10'0"	95 sq. ft	Yes
8	Entry	3'2" x 3'4"	10 sq. ft	Yes
9	Living Room	10'9" x 18'1"	195 sq. ft	Yes

Home data report

151 Riverdale Avenue, Old Ottawa South, Rideau Gardens,
Ottawa, Ontario, Canada, K1S 1R1



Room dimensions

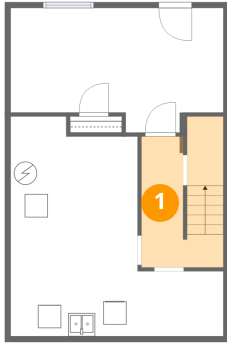
Floor 3

Total:526sqft Excluded: 0sqft

#		Dimensions	sqft	Counted as living area
10	Hall	3'5" x 11'10"	40 sq. ft	Yes
11	Bedroom	11'7" x 14'2"	164 sq. ft	Yes
12	Primary Bedroom	11'7" x 11'5"	132 sq. ft	Yes
13	Bedroom	9'8" x 8'4"	81 sq. ft	Yes
14	Bath	6'7" x 7'8"	50 sq. ft	Yes

151 Riverdale Avenue, Old Ottawa South, Rideau Gardens,
Ottawa, Ontario, Canada, K1S 1R1

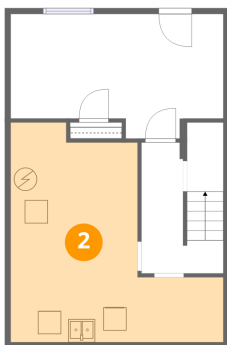
1 Floor 1 - Hall



Dimensions: 7'1" x 11'4"
Area: 81 sq. ft
Counted as living area: No

Heated: Yes
Finished: No
Enclosed: Yes
Contiguous: Yes
Permitted: Yes
Wet space: No
Addition: No
Conversion: No

2 Floor 1 - Utility

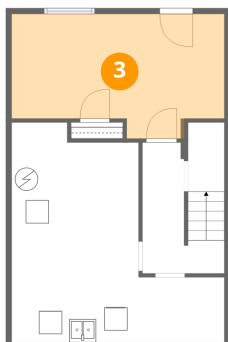


Dimensions: 18'6" x 19'1"
Area: 352 sq. ft
Counted as living area: No

Heated: Yes
Finished: No
Enclosed: Yes
Contiguous: Yes
Permitted: Yes
Wet space: No
Addition: No
Conversion: No

151 Riverdale Avenue, Old Ottawa South, Rideau Gardens,
Ottawa, Ontario, Canada, K1S 1R1

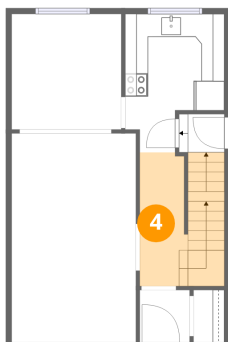
3 Floor 1 - Bedroom



Dimensions: 18'6" x 10'9"
Area: 199 sq. ft
Counted as living area: Yes

Heated: Yes
Finished: Yes
Enclosed: Yes
Contiguous: Yes
Permitted: Yes
Wet space: No
Addition: No
Conversion: No

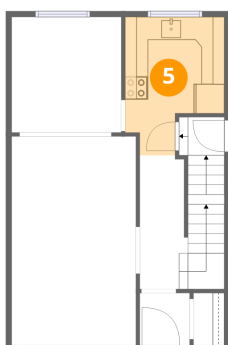
4 Floor 2 - Hall



Dimensions: 3'10" x 11'7"
Area: 45 sq. ft
Counted as living area: Yes

Heated: Yes
Finished: Yes
Enclosed: Yes
Contiguous: Yes
Permitted: Yes
Wet space: No
Addition: No
Conversion: No

5 Floor 2 - Kitchen

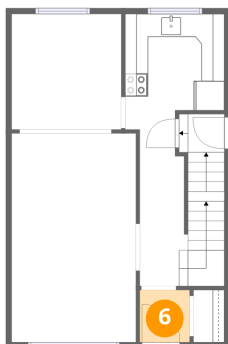


Dimensions: 8'7" x 12'0"
Area: 103 sq. ft
Counted as living area: Yes

Heated: Yes
Finished: Yes
Enclosed: Yes
Contiguous: Yes
Permitted: Yes
Wet space: No
Addition: No
Conversion: No

151 Riverdale Avenue, Old Ottawa South, Rideau Gardens,
Ottawa, Ontario, Canada, K1S 1R1

6 Floor 2 - Foyer



Dimensions: 4'4" x 4'6"
Area: 20 sq. ft
Counted as living area: Yes

Heated: Yes
Finished: Yes
Enclosed: Yes
Contiguous: Yes
Permitted: Yes
Wet space: No
Addition: No
Conversion: No

7 Floor 2 - Dining Area



Dimensions: 9'6" x 10'0"
Area: 95 sq. ft
Counted as living area: Yes

Heated: Yes
Finished: Yes
Enclosed: Yes
Contiguous: Yes
Permitted: Yes
Wet space: No
Addition: No
Conversion: No

8 Floor 2 - Entry



Dimensions: 3'2" x 3'4"
Area: 10 sq. ft
Counted as living area: Yes

Heated: Yes
Finished: Yes
Enclosed: Yes
Contiguous: Yes
Permitted: Yes
Wet space: No
Addition: No
Conversion: No

151 Riverdale Avenue, Old Ottawa South, Rideau Gardens,
Ottawa, Ontario, Canada, K1S 1R1

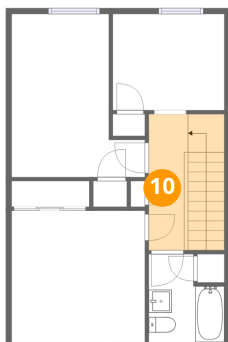
9 Floor 2 - Living Room



Dimensions: 10'9" x 18'1"
Area: 195 sq. ft
Counted as living area: Yes

Heated: Yes
Finished: Yes
Enclosed: Yes
Contiguous: Yes
Permitted: Yes
Wet space: No
Addition: No
Conversion: No

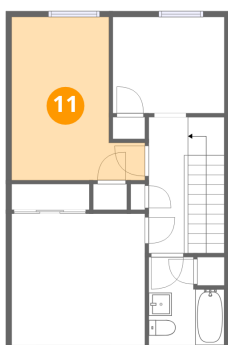
10 Floor 3 - Hall



Dimensions: 3'5" x 11'10"
Area: 40 sq. ft
Counted as living area: Yes

Heated: Yes
Finished: Yes
Enclosed: Yes
Contiguous: Yes
Permitted: Yes
Wet space: No
Addition: No
Conversion: No

11 Floor 3 - Bedroom

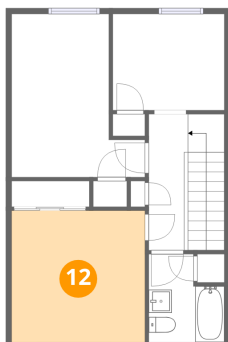


Dimensions: 11'7" x 14'2"
Area: 164 sq. ft
Counted as living area: Yes

Heated: Yes
Finished: Yes
Enclosed: Yes
Contiguous: Yes
Permitted: Yes
Wet space: No
Addition: No
Conversion: No

151 Riverdale Avenue, Old Ottawa South, Rideau Gardens,
Ottawa, Ontario, Canada, K1S 1R1

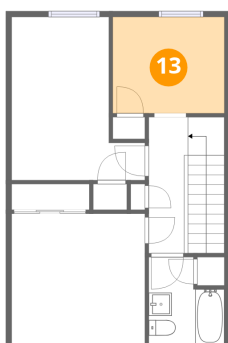
12 Floor 3 - Primary Bedroom



Dimensions: 11'7" x 11'5"
Area: 132 sq. ft
Counted as living area: Yes

Heated: Yes
Finished: Yes
Enclosed: Yes
Contiguous: Yes
Permitted: Yes
Wet space: No
Addition: No
Conversion: No

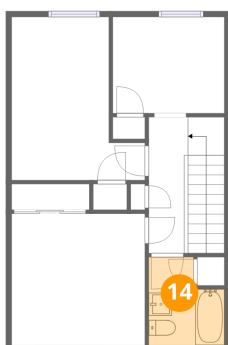
13 Floor 3 - Bedroom



Dimensions: 9'8" x 8'4"
Area: 81 sq. ft
Counted as living area: Yes

Heated: Yes
Finished: Yes
Enclosed: Yes
Contiguous: Yes
Permitted: Yes
Wet space: No
Addition: No
Conversion: No

14 Floor 3 - Bath



Dimensions: 6'7" x 7'8"
Area: 50 sq. ft
Counted as living area: Yes

Heated: Yes
Finished: Yes
Enclosed: Yes
Contiguous: Yes
Permitted: Yes
Wet space: Yes
Addition: No
Conversion: No