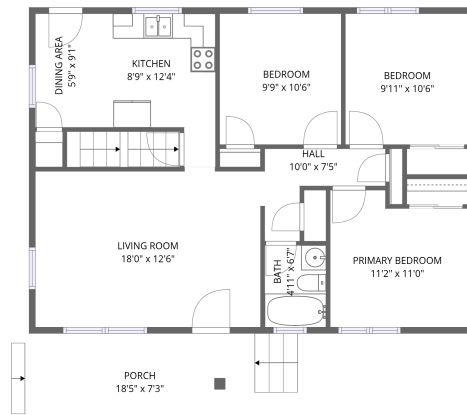
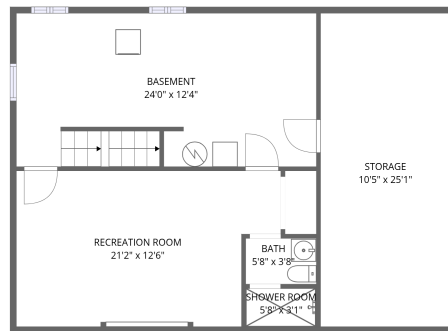


Home data report

508 5th St, Golden, CO, US



1st floor



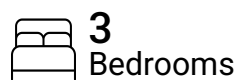
Basement

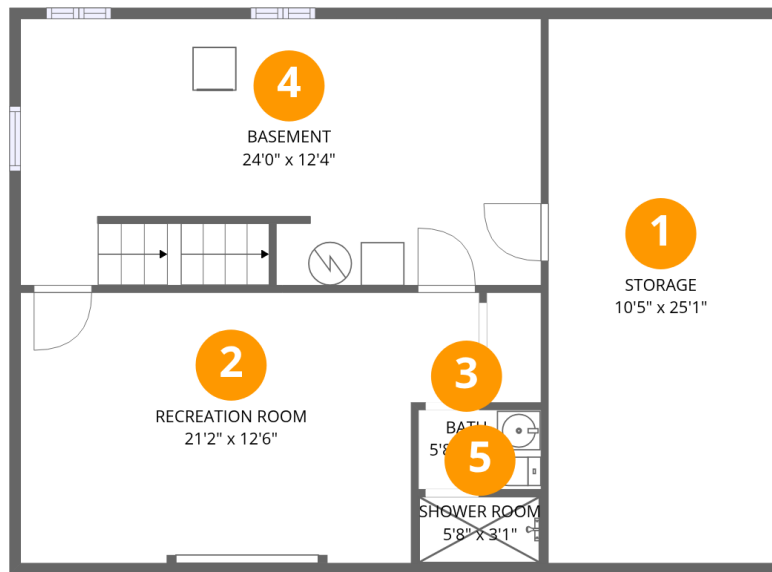
Total Area: 1185 sq. ft

Basement: 312 sq. ft, 1st Floor: 873 sq. ft

Excluded: Storage 265 sq. ft, Basement 296 sq. ft, Porch 135 sq. ft, Walls: 122 sq. ft

Property summary





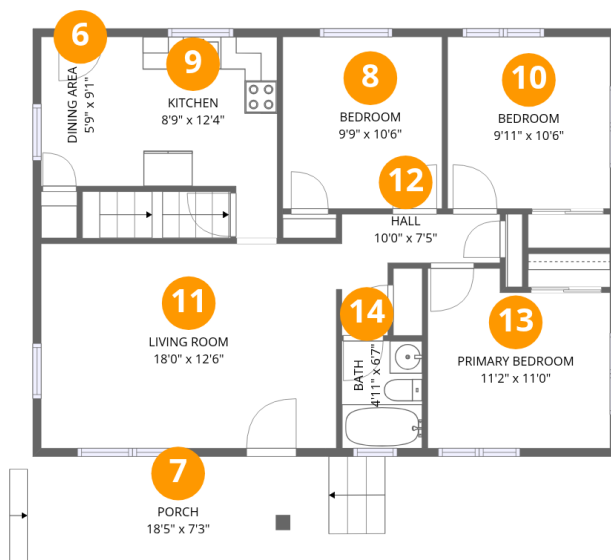
Room dimensions

Floor 1 Below grade

Total:312sqft

Excluded: 561sqft

#		Dimensions	sqft	Counted as living area
1	Storage	10'5" x 25'1"	261 sq. ft	No
2	Recreation Room	21'2" x 12'6"	241 sq. ft	Yes
3	Bath	5'8" x 3'8"	21 sq. ft	Yes
4	Basement	24'0" x 12'4"	291 sq. ft	No
5	Shower Room	5'8" x 3'1"	17 sq. ft	Yes



Room dimensions

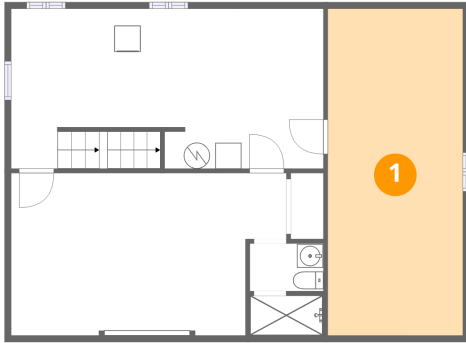
Floor 2

Total:873sqft

Excluded: 135sqft

#		Dimensions	sqft	Counted as living area
6	Dining Area	5'9" x 9'1"	52 sq. ft	Yes
7	Porch	18'5" x 7'3"	135 sq. ft	No
8	Bedroom	9'9" x 10'6"	102 sq. ft	Yes
9	Kitchen	8'9" x 12'4"	88 sq. ft	Yes
10	Bedroom	9'11" x 10'6"	104 sq. ft	Yes
11	Living Room	18'0" x 12'6"	225 sq. ft	Yes
12	Hall	10'0" x 7'5"	42 sq. ft	Yes
13	Primary Bedroom	11'2" x 11'0"	112 sq. ft	Yes
14	Bath	4'11" x 6'7"	32 sq. ft	Yes

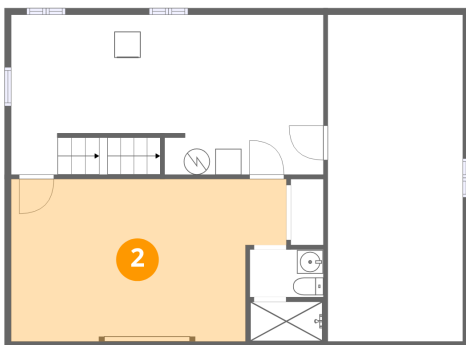
1 Floor 1 - Storage



Dimensions: 10'5" x 25'1"
Area: 261 sq. ft
Counted as living area: No

Heated: No
Finished: No
Enclosed: No
Contiguous: Yes
Permitted: Yes
Wet space: No
Addition: No
Conversion: No

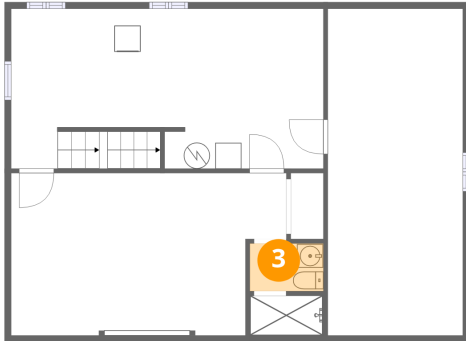
2 Floor 1 - Recreation Room



Dimensions: 21'2" x 12'6"
Area: 241 sq. ft
Counted as living area: Yes

Heated: Yes
Finished: Yes
Enclosed: Yes
Contiguous: Yes
Permitted: Yes
Wet space: No
Addition: No
Conversion: No

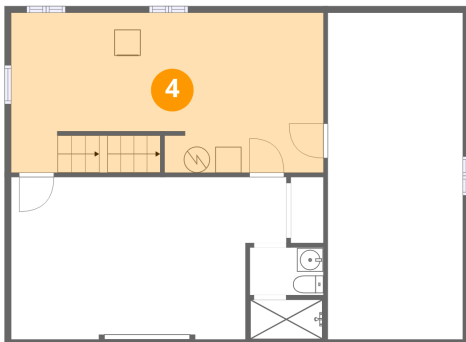
3 Floor 1 - Bath



Dimensions: 5'8" x 3'8"
Area: 21 sq. ft
Counted as living area: Yes

Heated: Yes
Finished: Yes
Enclosed: Yes
Contiguous: Yes
Permitted: Yes
Wet space: No
Addition: No
Conversion: No

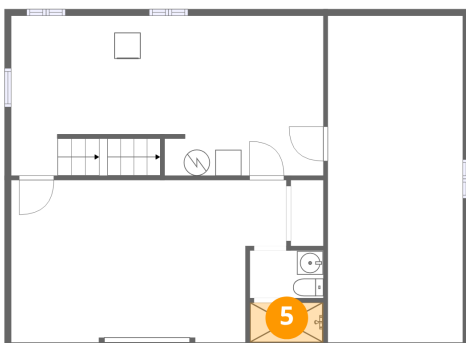
4 Floor 1 - Basement



Dimensions: 24'0" x 12'4"
Area: 291 sq. ft
Counted as living area: No

Heated: Yes
Finished: No
Enclosed: Yes
Contiguous: Yes
Permitted: Yes
Wet space: No
Addition: No
Conversion: No

5 Floor 1 - Shower Room



Dimensions: 5'8" x 3'1"
Area: 17 sq. ft
Counted as living area: Yes

Heated: Yes
Finished: Yes
Enclosed: Yes
Contiguous: Yes
Permitted: Yes
Wet space: Yes
Addition: No
Conversion: No

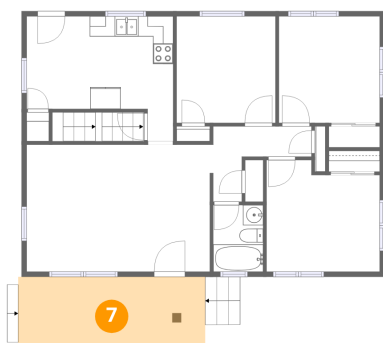
6 Floor 2 - Dining Area



Dimensions: 5'9" x 9'1"
Area: 52 sq. ft
Counted as living area: Yes

Heated: Yes
Finished: Yes
Enclosed: Yes
Contiguous: Yes
Permitted: Yes
Wet space: No
Addition: No
Conversion: No

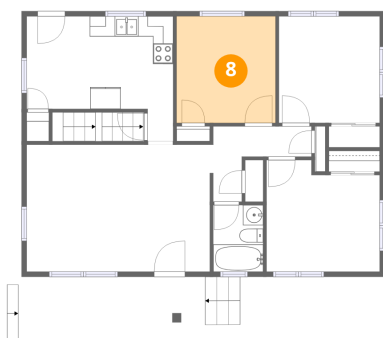
7 Floor 2 - Porch



Dimensions: 18'5" x 7'3"
Area: 135 sq. ft
Counted as living area: No

Heated: No
Finished: No
Enclosed: No
Contiguous: Yes
Permitted: Yes
Wet space: No
Addition: No
Conversion: No

8 Floor 2 - Bedroom



Dimensions: 9'9" x 10'6"
Area: 102 sq. ft
Counted as living area: Yes

Heated: Yes
Finished: Yes
Enclosed: Yes
Contiguous: Yes
Permitted: Yes
Wet space: No
Addition: No
Conversion: No

9 Floor 2 - Kitchen



Dimensions: 8'9" x 12'4"
Area: 88 sq. ft
Counted as living area: Yes

Heated: Yes
Finished: Yes
Enclosed: Yes
Contiguous: Yes
Permitted: Yes
Wet space: No
Addition: No
Conversion: No

10 Floor 2 - Bedroom



Dimensions: 9'11" x 10'6"
Area: 104 sq. ft
Counted as living area: Yes

Heated: Yes
Finished: Yes
Enclosed: Yes
Contiguous: Yes
Permitted: Yes
Wet space: No
Addition: No
Conversion: No

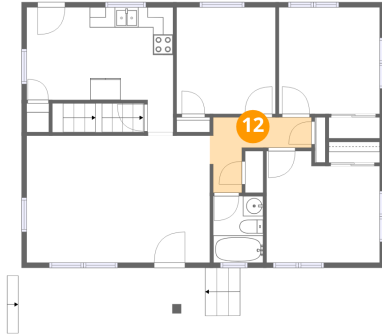
11 Floor 2 - Living Room



Dimensions: 18'0" x 12'6"
Area: 225 sq. ft
Counted as living area: Yes

Heated: Yes
Finished: Yes
Enclosed: Yes
Contiguous: Yes
Permitted: Yes
Wet space: No
Addition: No
Conversion: No

12 Floor 2 - Hall



Dimensions: 10'0" x 7'5"
Area: 42 sq. ft
Counted as living area: Yes

Heated: Yes
Finished: Yes
Enclosed: Yes
Contiguous: Yes
Permitted: Yes
Wet space: No
Addition: No
Conversion: No

13 Floor 2 - Primary Bedroom



Dimensions: 11'2" x 11'0"
Area: 112 sq. ft
Counted as living area: Yes

Heated: Yes
Finished: Yes
Enclosed: Yes
Contiguous: Yes
Permitted: Yes
Wet space: No
Addition: No
Conversion: No

14 Floor 2 - Bath



Dimensions: 4'11" x 6'7"
Area: 32 sq. ft
Counted as living area: Yes

Heated: Yes
Finished: Yes
Enclosed: Yes
Contiguous: Yes
Permitted: Yes
Wet space: Yes
Addition: No
Conversion: No