

Home data report

830 Orpington Rd,Peterborough,ON,CA



**Total Area: 1518 sq. ft**

Basement 1: 635 sq. ft, 1st Floor: 883 sq. ft

Excluded: Utility 248 sq. ft, Deck 194 sq. ft, Walls: 126 sq. ft

Property summary

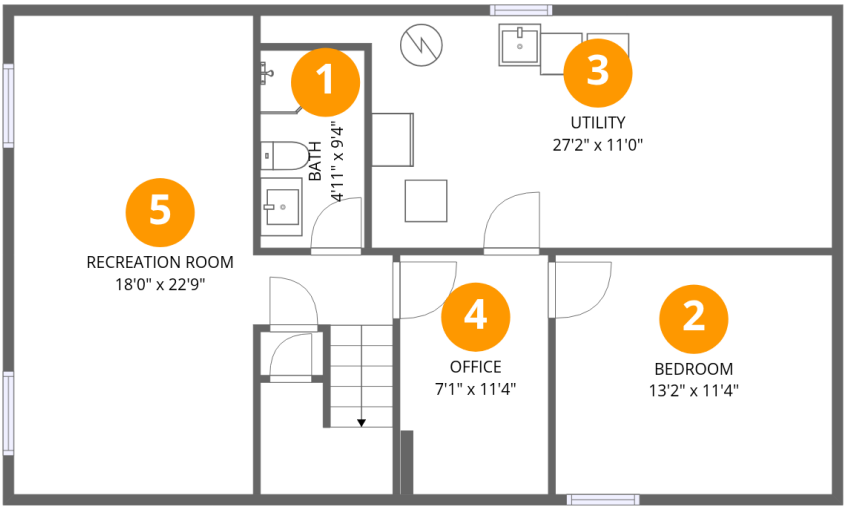
 **2** Floors

 **4** Bedrooms

 **2** Bathrooms

Home data report

830 Orpington Rd,Peterborough,ON,CA



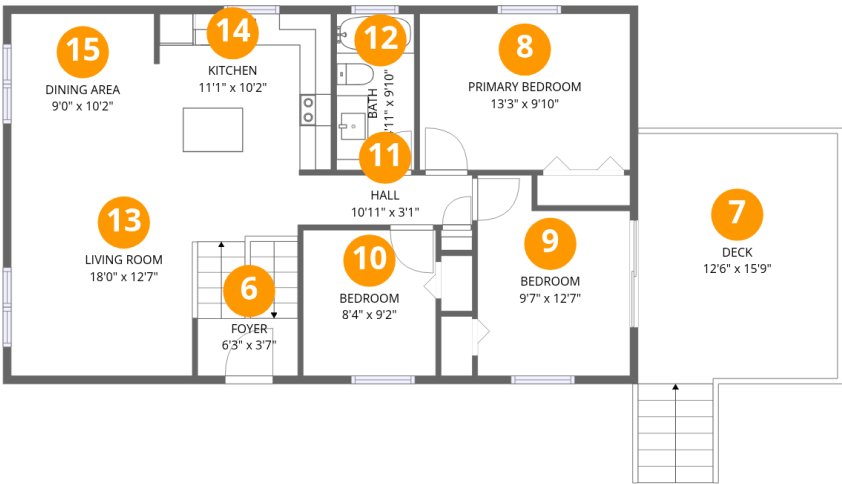
Room dimensions

Floor 1 Below grade Total:635sqft   Excluded: 248sqft

#		Dimensions	sqft	Counted as living area
1	Bath	4'11" x 9'4"	46 sq. ft	Yes
2	Bedroom	13'2" x 11'4"	149 sq. ft	Yes
3	Utility	27'2" x 11'0"	300 sq. ft	No
4	Office	7'1" x 11'4"	80 sq. ft	Yes
5	Recreation Room	18'0" x 22'9"	408 sq. ft	Yes

Home data report

830 Orpington Rd,Peterborough,ON,CA

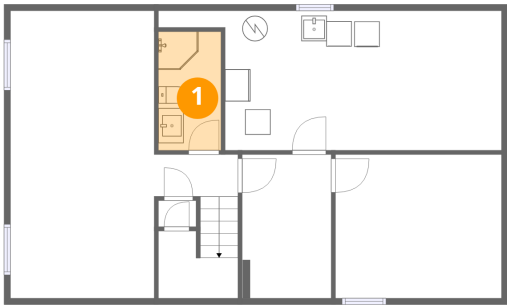


Room dimensions

Floor 2 Total:883sqft Excluded: 194sqft

#		Dimensions	sqft	Counted as living area
6	Foyer	6'3" x 3'7"	23 sq. ft	Yes
7	Deck	12'6" x 15'9"	197 sq. ft	No
8	Primary Bedroom	13'3" x 9'10"	130 sq. ft	Yes
9	Bedroom	9'7" x 12'7"	121 sq. ft	Yes
10	Bedroom	8'4" x 9'2"	76 sq. ft	Yes
11	Hall	10'11" x 3'1"	34 sq. ft	Yes
12	Bath	4'11" x 9'10"	48 sq. ft	Yes
13	Living Room	18'0" x 12'7"	227 sq. ft	Yes
14	Kitchen	11'1" x 10'2"	113 sq. ft	Yes
15	Dining Area	9'0" x 10'2"	91 sq. ft	Yes

1 Floor 1 - Bath



Dimensions: 4'11" x 9'4"  
Area: 46 sq. ft  
Counted as living area: Yes

Heated: Yes  
Finished: Yes  
Enclosed: Yes  
Contiguous: Yes  
Permitted: Yes  
Wet space: Yes  
Addition: No  
Conversion: No

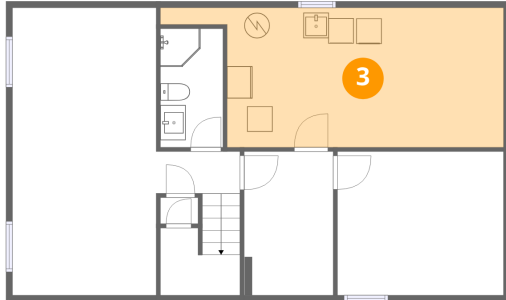
2 Floor 1 - Bedroom



Dimensions: 13'2" x 11'4"  
Area: 149 sq. ft  
Counted as living area: Yes

Heated: Yes  
Finished: Yes  
Enclosed: Yes  
Contiguous: Yes  
Permitted: Yes  
Wet space: No  
Addition: No  
Conversion: No

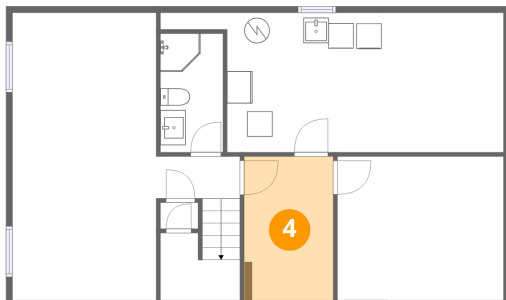
### 3 Floor 1 - Utility



Dimensions: 27'2" x 11'0"  
Area: 300 sq. ft  
Counted as living area: No

Heated: Yes  
Finished: No  
Enclosed: Yes  
Contiguous: Yes  
Permitted: Yes  
Wet space: No  
Addition: No  
Conversion: No

### 4 Floor 1 - Office



Dimensions: 7'1" x 11'4"  
Area: 80 sq. ft  
Counted as living area: Yes

Heated: Yes  
Finished: Yes  
Enclosed: Yes  
Contiguous: Yes  
Permitted: Yes  
Wet space: No  
Addition: No  
Conversion: No

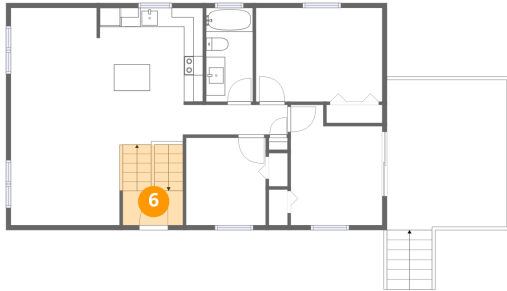
### 5 Floor 1 - Recreation Room



Dimensions: 18'0" x 22'9"  
Area: 408 sq. ft  
Counted as living area: Yes

Heated: Yes  
Finished: Yes  
Enclosed: Yes  
Contiguous: Yes  
Permitted: Yes  
Wet space: No  
Addition: No  
Conversion: No

## 6 Floor 2 - Foyer



Dimensions: 6'3" x 3'7"  
Area: 23 sq. ft  
Counted as living area: Yes

Heated: Yes  
Finished: Yes  
Enclosed: Yes  
Contiguous: Yes  
Permitted: Yes  
Wet space: No  
Addition: No  
Conversion: No

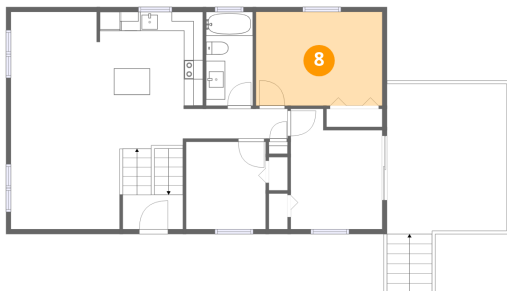
## 7 Floor 2 - Deck



Dimensions: 12'6" x 15'9"  
Area: 197 sq. ft  
Counted as living area: No

Heated: No  
Finished: No  
Enclosed: No  
Contiguous: Yes  
Permitted: Yes  
Wet space: No  
Addition: No  
Conversion: No

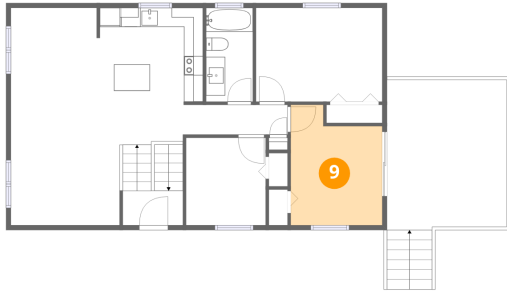
## 8 Floor 2 - Primary Bedroom



Dimensions: 13'3" x 9'10"  
Area: 130 sq. ft  
Counted as living area: Yes

Heated: Yes  
Finished: Yes  
Enclosed: Yes  
Contiguous: Yes  
Permitted: Yes  
Wet space: No  
Addition: No  
Conversion: No

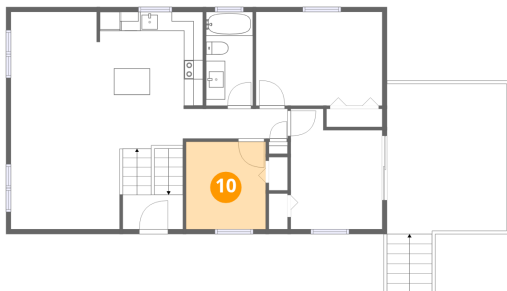
## 9 Floor 2 - Bedroom



Dimensions: 9'7" x 12'7"  
Area: 121 sq. ft  
Counted as living area: Yes

Heated: Yes  
Finished: Yes  
Enclosed: Yes  
Contiguous: Yes  
Permitted: Yes  
Wet space: No  
Addition: No  
Conversion: No

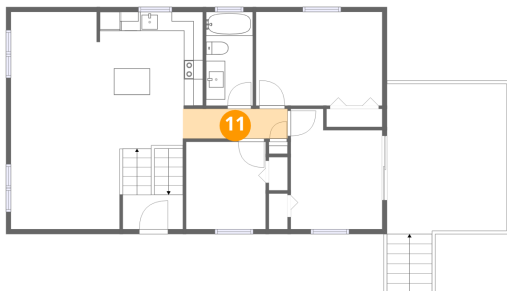
## 10 Floor 2 - Bedroom



Dimensions: 8'4" x 9'2"  
Area: 76 sq. ft  
Counted as living area: Yes

Heated: Yes  
Finished: Yes  
Enclosed: Yes  
Contiguous: Yes  
Permitted: Yes  
Wet space: No  
Addition: No  
Conversion: No

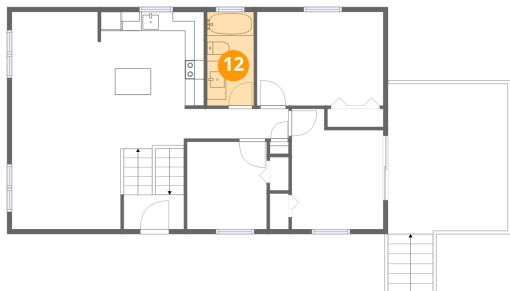
## 11 Floor 2 - Hall



Dimensions: 10'11" x 3'1"  
Area: 34 sq. ft  
Counted as living area: Yes

Heated: Yes  
Finished: Yes  
Enclosed: Yes  
Contiguous: Yes  
Permitted: Yes  
Wet space: No  
Addition: No  
Conversion: No

## 12 Floor 2 - Bath



Dimensions: 4'11" x 9'10"  
Area: 48 sq. ft  
Counted as living area: Yes

Heated: Yes  
Finished: Yes  
Enclosed: Yes  
Contiguous: Yes  
Permitted: Yes  
Wet space: Yes  
Addition: No  
Conversion: No

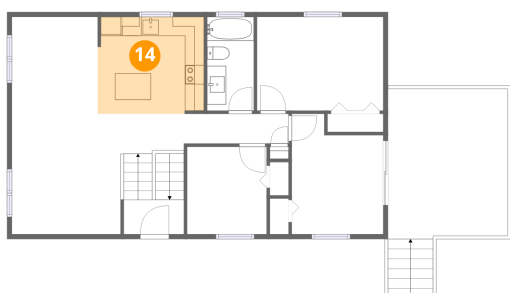
## 13 Floor 2 - Living Room



Dimensions: 18'0" x 12'7"  
Area: 227 sq. ft  
Counted as living area: Yes

Heated: Yes  
Finished: Yes  
Enclosed: Yes  
Contiguous: Yes  
Permitted: Yes  
Wet space: No  
Addition: No  
Conversion: No

## 14 Floor 2 - Kitchen



Dimensions: 11'1" x 10'2"  
Area: 113 sq. ft  
Counted as living area: Yes

Heated: Yes  
Finished: Yes  
Enclosed: Yes  
Contiguous: Yes  
Permitted: Yes  
Wet space: No  
Addition: No  
Conversion: No



15 Floor 2 - Dining Area



Dimensions: 9'0" x 10'2"  
Area: 91 sq. ft  
Counted as living area: Yes

Heated: Yes  
Finished: Yes  
Enclosed: Yes  
Contiguous: Yes  
Permitted: Yes  
Wet space: No  
Addition: No  
Conversion: No