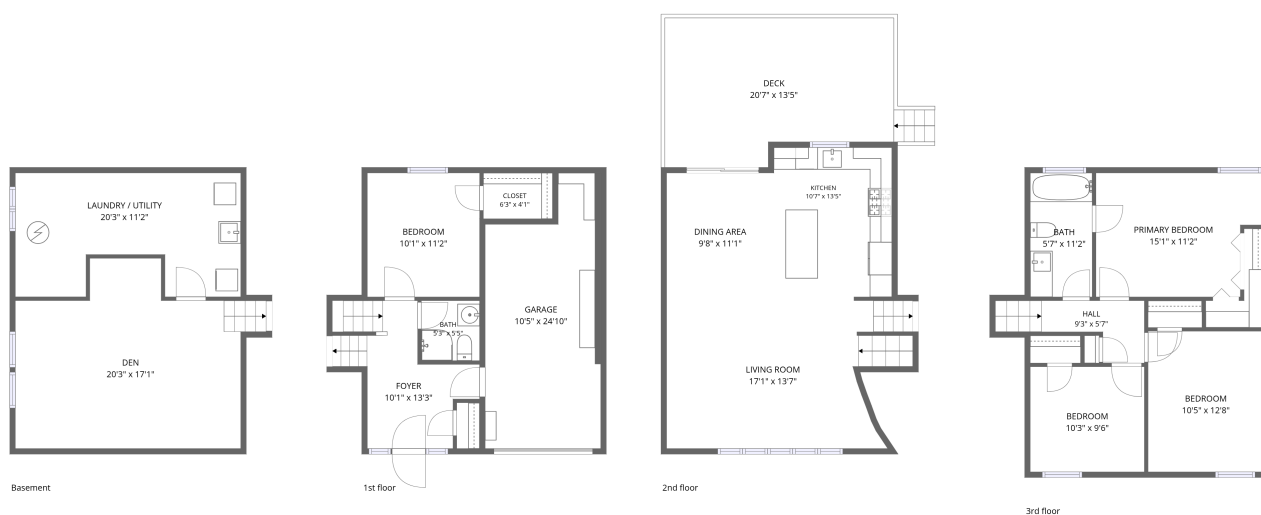


Home data report

40 Cambridge Road, Bay Park, East Rockaway, Nassau County,
New York, United States, 11518



Total Area: 1704 sq. ft

Basement: 310 sq. ft, 1st Floor: 296 sq. ft, 2nd Floor: 525 sq. ft, 3rd Floor: 573 sq. ft

Excluded: Laundry / utility 199 sq. ft, Garage 227 sq. ft, Deck 251 sq. ft, Walls: 216 sq. ft

Property summary

 **4** Floors

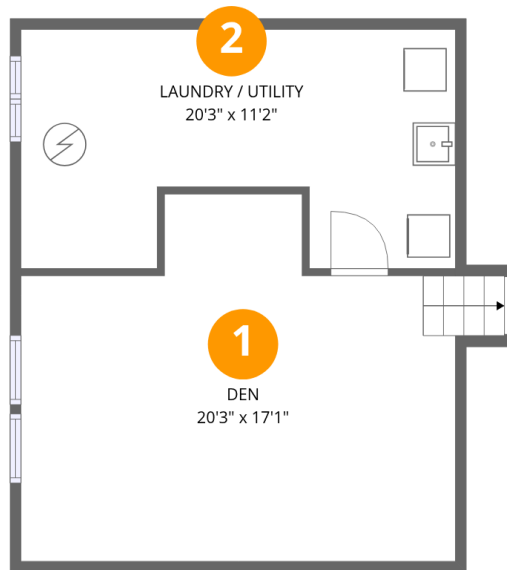
 **4** Bedrooms

 **2** Bathrooms

 **1** Garages

Home data report

40 Cambridge Road, Bay Park, East Rockaway, Nassau County, New York, United States, 11518



Room dimensions

Floor 1 Below grade

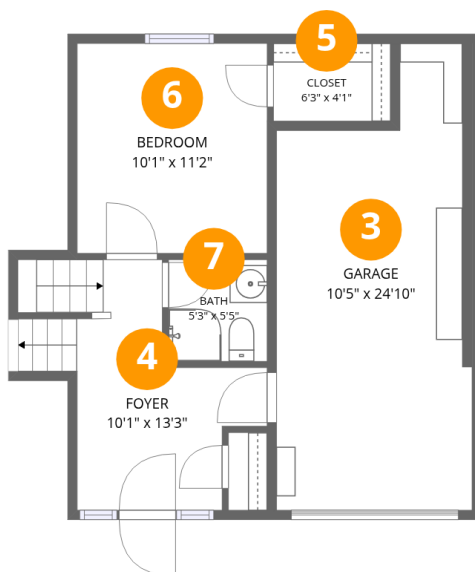
Total:310sqft

Excluded: 199sqft

#		Dimensions	sqft	Counted as living area
1	Den	20'3" x 17'1"	301 sq. ft	Yes
2	Laundry / Utility	20'3" x 11'2"	199 sq. ft	No

Home data report

40 Cambridge Road, Bay Park, East Rockaway, Nassau County, New York, United States, 11518



Room dimensions

Floor 2

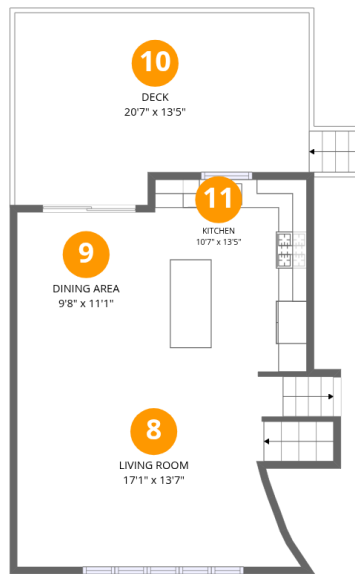
Total:296sqft

Excluded: 227sqft

#		Dimensions	sqft	Counted as living area
3	Garage	10'5" x 24'10"	227 sq. ft	No
4	Foyer	10'1" x 13'3"	109 sq. ft	Yes
5	Closet	6'3" x 4'1"	26 sq. ft	Yes
6	Bedroom	10'1" x 11'2"	113 sq. ft	Yes
7	Bath	5'3" x 5'5"	28 sq. ft	Yes

Home data report

40 Cambridge Road, Bay Park, East Rockaway, Nassau County, New York, United States, 11518



Room dimensions

Floor 3

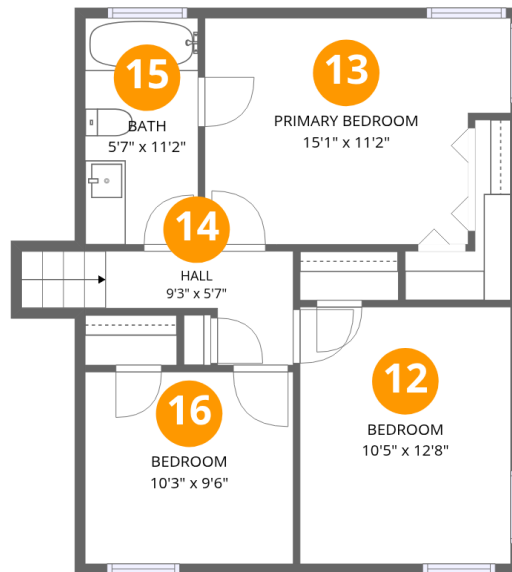
Total:525sqft

Excluded: 251sqft

#		Dimensions	sqft	Counted as living area
8	Living Room	17'1" x 13'7"	269 sq. ft	Yes
9	Dining Area	9'8" x 11'1"	108 sq. ft	Yes
10	Deck	20'7" x 13'5"	251 sq. ft	No
11	Kitchen	10'7" x 13'5"	143 sq. ft	Yes

Home data report

40 Cambridge Road, Bay Park, East Rockaway, Nassau County,
New York, United States, 11518



Room dimensions

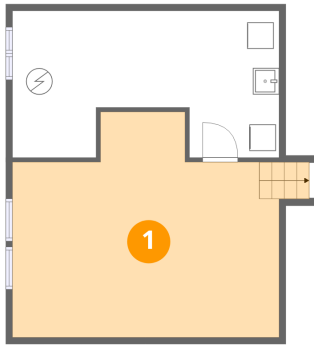
Floor 4

Total:573sqft Excluded: 0sqft

#		Dimensions	sqft	Counted as living area
12	Bedroom	10'5" x 12'8"	132 sq. ft	Yes
13	Primary Bedroom	15'1" x 11'2"	155 sq. ft	Yes
14	Hall	9'3" x 5'7"	48 sq. ft	Yes
15	Bath	5'7" x 11'2"	62 sq. ft	Yes
16	Bedroom	10'3" x 9'6"	97 sq. ft	Yes

40 Cambridge Road, Bay Park, East Rockaway, Nassau County,
New York, United States, 11518

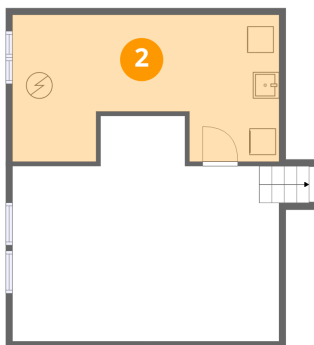
1 Floor 1 - Den



Dimensions: 20'3" x 17'1"
Area: 301 sq. ft
Counted as living area: No

Heated: Yes
Finished: Yes
Enclosed: Yes
Contiguous: Yes
Permitted: Yes
Wet space: No
Addition: No
Conversion: No

2 Floor 1 - Laundry / Utility

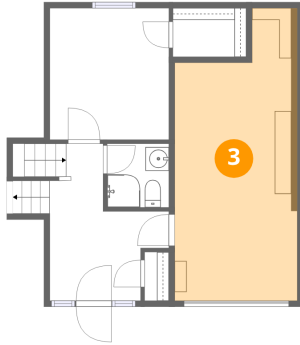


Dimensions: 20'3" x 11'2"
Area: 199 sq. ft
Counted as living area: No

Heated: Yes
Finished: No
Enclosed: Yes
Contiguous: Yes
Permitted: Yes
Wet space: No
Addition: No
Conversion: No

40 Cambridge Road, Bay Park, East Rockaway, Nassau County,
New York, United States, 11518

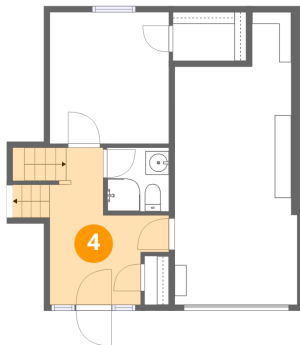
3 Floor 2 - Garage



Dimensions: 10'5" x 24'10"
Area: 227 sq. ft
Counted as living area: No

Heated: No
Finished: No
Enclosed: Yes
Contiguous: Yes
Permitted: Yes
Wet space: No
Addition: No
Conversion: No

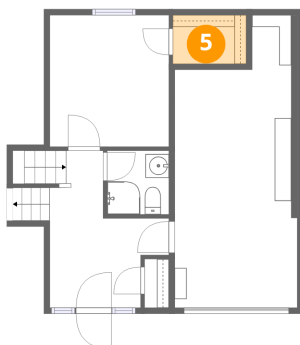
4 Floor 2 - Foyer



Dimensions: 10'1" x 13'3"
Area: 109 sq. ft
Counted as living area: Yes

Heated: Yes
Finished: Yes
Enclosed: Yes
Contiguous: Yes
Permitted: Yes
Wet space: No
Addition: No
Conversion: No

5 Floor 2 - Closet

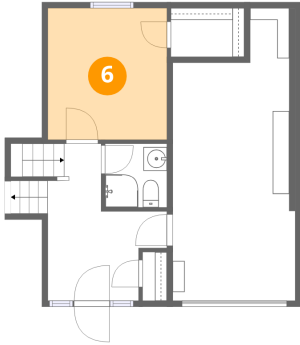


Dimensions: 6'3" x 4'1"
Area: 26 sq. ft
Counted as living area: Yes

Heated: Yes
Finished: Yes
Enclosed: Yes
Contiguous: Yes
Permitted: Yes
Wet space: No
Addition: No
Conversion: No

40 Cambridge Road, Bay Park, East Rockaway, Nassau County,
New York, United States, 11518

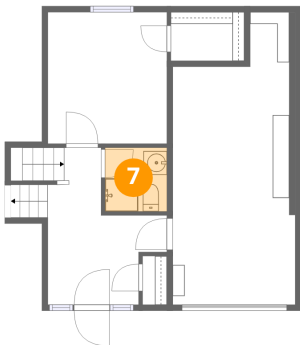
6 Floor 2 - Bedroom



Dimensions: 10'1" x 11'2"
Area: 113 sq. ft
Counted as living area: Yes

Heated: Yes
Finished: Yes
Enclosed: Yes
Contiguous: Yes
Permitted: Yes
Wet space: No
Addition: No
Conversion: No

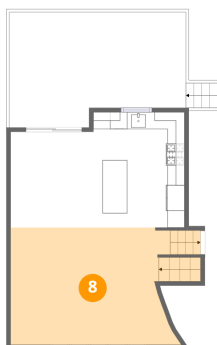
7 Floor 2 - Bath



Dimensions: 5'3" x 5'5"
Area: 28 sq. ft
Counted as living area: Yes

Heated: Yes
Finished: Yes
Enclosed: Yes
Contiguous: Yes
Permitted: Yes
Wet space: Yes
Addition: No
Conversion: No

8 Floor 3 - Living Room

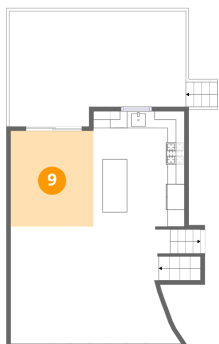


Dimensions: 17'1" x 13'7"
Area: 269 sq. ft
Counted as living area: Yes

Heated: Yes
Finished: Yes
Enclosed: Yes
Contiguous: Yes
Permitted: Yes
Wet space: No
Addition: No
Conversion: No

40 Cambridge Road, Bay Park, East Rockaway, Nassau County, New York, United States, 11518

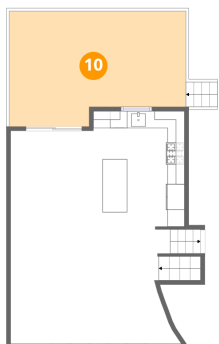
9 Floor 3 - Dining Area



Dimensions: 9'8" x 11'1"
Area: 108 sq. ft
Counted as living area: Yes

Heated: Yes
Finished: Yes
Enclosed: Yes
Contiguous: Yes
Permitted: Yes
Wet space: No
Addition: No
Conversion: No

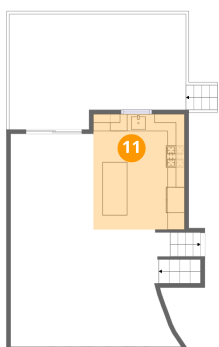
10 Floor 3 - Deck



Dimensions: 20'7" x 13'5"
Area: 251 sq. ft
Counted as living area: No

Heated: No
Finished: No
Enclosed: No
Contiguous: Yes
Permitted: Yes
Wet space: No
Addition: No
Conversion: No

11 Floor 3 - Kitchen

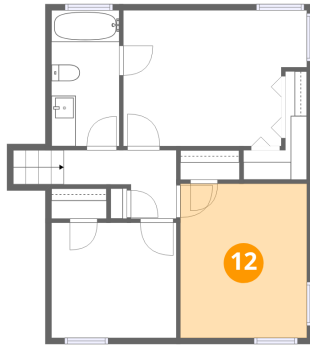


Dimensions: 10'7" x 13'5"
Area: 143 sq. ft
Counted as living area: Yes

Heated: Yes
Finished: Yes
Enclosed: Yes
Contiguous: Yes
Permitted: Yes
Wet space: No
Addition: No
Conversion: No

40 Cambridge Road, Bay Park, East Rockaway, Nassau County,
New York, United States, 11518

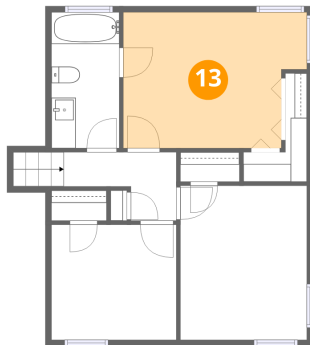
12 Floor 4 - Bedroom



Dimensions: 10'5" x 12'8"
Area: 132 sq. ft
Counted as living area: Yes

Heated: Yes
Finished: Yes
Enclosed: Yes
Contiguous: Yes
Permitted: Yes
Wet space: No
Addition: No
Conversion: No

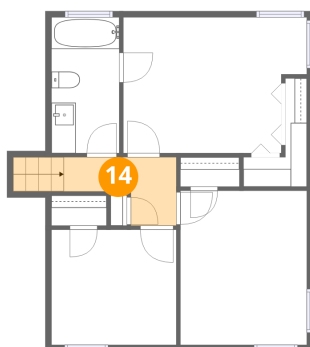
13 Floor 4 - Primary Bedroom



Dimensions: 15'1" x 11'2"
Area: 155 sq. ft
Counted as living area: Yes

Heated: Yes
Finished: Yes
Enclosed: Yes
Contiguous: Yes
Permitted: Yes
Wet space: No
Addition: No
Conversion: No

14 Floor 4 - Hall

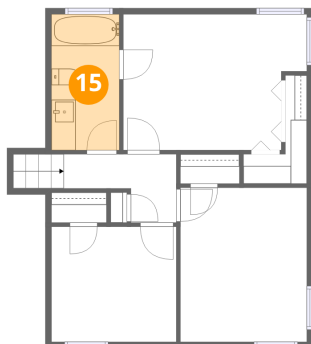


Dimensions: 9'3" x 5'7"
Area: 48 sq. ft
Counted as living area: Yes

Heated: Yes
Finished: Yes
Enclosed: Yes
Contiguous: Yes
Permitted: Yes
Wet space: No
Addition: No
Conversion: No

40 Cambridge Road, Bay Park, East Rockaway, Nassau County,
New York, United States, 11518

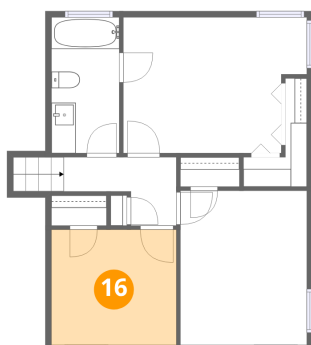
15 Floor 4 - Bath



Dimensions: 5'7" x 11'2"
Area: 62 sq. ft
Counted as living area: Yes

Heated: Yes
Finished: Yes
Enclosed: Yes
Contiguous: Yes
Permitted: Yes
Wet space: Yes
Addition: No
Conversion: No

16 Floor 4 - Bedroom



Dimensions: 10'3" x 9'6"
Area: 97 sq. ft
Counted as living area: Yes

Heated: Yes
Finished: Yes
Enclosed: Yes
Contiguous: Yes
Permitted: Yes
Wet space: No
Addition: No
Conversion: No