

15 Maidens Cres, Collingwood, ON, CA



Total Area: 1725 sq. ft

Basement: 0 sq. ft, 1st Floor: 710 sq. ft, 2nd Floor: 1015 sq. ft

Excluded: Basement 710 sq. ft, Garage 365 sq. ft, Covered deck 133 sq. ft, Open to below 28 sq. ft, Walls: 227 sq. ft

Property summary



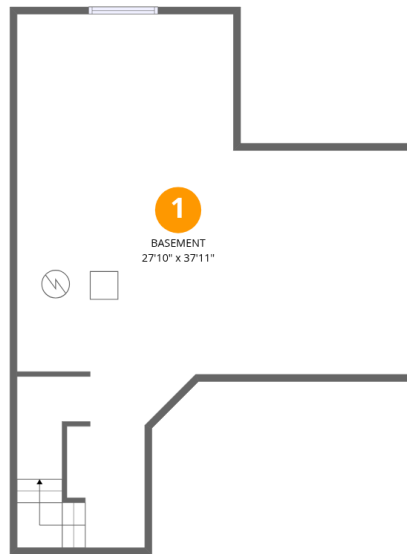
Home data report

15 Maidens Cres, Collingwood, ON, CA

 **1**
Half baths

 **1**
Garages

15 Maidens Cres, Collingwood, ON, CA



Room dimensions

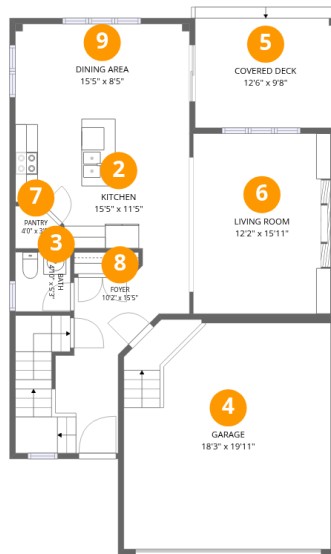
Floor 1 Below grade

Total: 0sqft

Excluded: 710sqft

#		Dimensions	sqft	Counted as living area
1	Basement	27'10" x 37'11"	708 sq. ft	No

15 Maidens Cres, Collingwood, ON, CA



Room dimensions

Floor 2

Total: 710sqft

Excluded: 498sqft

#		Dimensions	sqft	Counted as living area
2	Kitchen	15'5" x 11'5"	160 sq. ft	Yes
3	Bath	4'10" x 5'3"	25 sq. ft	Yes
4	Garage	18'3" x 19'11"	365 sq. ft	No
5	Covered Deck	12'6" x 9'8"	133 sq. ft	No
6	Living Room	12'2" x 15'11"	193 sq. ft	Yes
7	Pantry	4'0" x 3'9"	13 sq. ft	Yes
8	Foyer	10'2" x 15'5"	159 sq. ft	Yes
9	Dining Area	15'5" x 8'5"	129 sq. ft	Yes

15 Maidens Cres, Collingwood, ON, CA



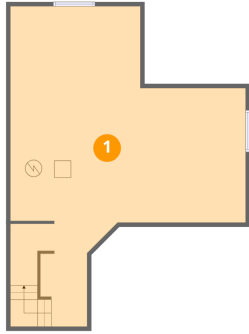
Room dimensions

Floor 3

Total:1015sqft Excluded: 28sqft

#		Dimensions	sqft	Counted as living area
10	Primary Bath	12'5" x 9'2"	113 sq. ft	Yes
11	Bath	11'10" x 5'5"	59 sq. ft	Yes
12	Hall	3'3" x 10'3"	33 sq. ft	Yes
13	Bedroom	9'11" x 12'8"	113 sq. ft	Yes
14	Primary Bedroom	15'4" x 15'1"	197 sq. ft	Yes
15	Open To Below	3'11" x 8'7"	28 sq. ft	No
16	Laundry	6'1" x 7'10"	48 sq. ft	Yes
17	Hall	12'8" x 5'7"	109 sq. ft	Yes
18	Bedroom	9'10" x 12'2"	102 sq. ft	Yes
19	W.I.C.	5'5" x 7'1"	38 sq. ft	Yes
20	Bedroom	10'0" x 10'8"	104 sq. ft	Yes

1 Floor 1 - Basement



Dimensions: 27'10" x 37'11"
Area: 708 sq. ft
Counted as living area: No

Heated: Yes
Finished: No
Enclosed: Yes
Contiguous: Yes
Permitted: Yes
Wet space: No
Addition: No
Conversion: No

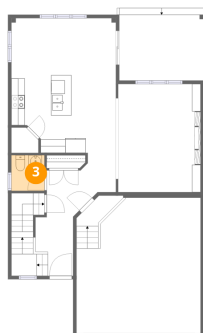
2 Floor 2 - Kitchen



Dimensions: 15'5" x 11'5"
Area: 160 sq. ft
Counted as living area: Yes

Heated: Yes
Finished: Yes
Enclosed: Yes
Contiguous: Yes
Permitted: Yes
Wet space: No
Addition: No
Conversion: No

3 Floor 2 - Bath



Dimensions: 4'10" x 5'3"
Area: 25 sq. ft
Counted as living area: Yes

Heated: Yes
Finished: Yes
Enclosed: Yes
Contiguous: Yes
Permitted: Yes
Wet space: Yes
Addition: No
Conversion: No

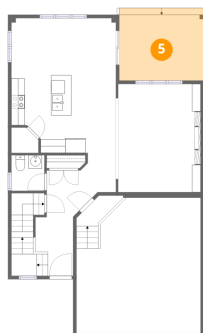
4 Floor 2 - Garage



Dimensions: 18'3" x 19'11"
Area: 365 sq. ft
Counted as living area: No

Heated: No
Finished: No
Enclosed: Yes
Contiguous: Yes
Permitted: Yes
Wet space: No
Addition: No
Conversion: No

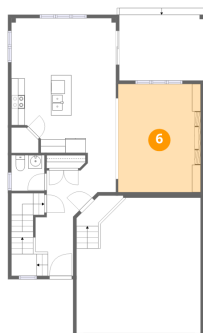
5 Floor 2 - Covered Deck



Dimensions: 12'6" x 9'8"
Area: 133 sq. ft
Counted as living area: No

Heated: No
Finished: No
Enclosed: No
Contiguous: Yes
Permitted: Yes
Wet space: No
Addition: No
Conversion: No

6 Floor 2 - Living Room



Dimensions: 12'2" x 15'11"
Area: 193 sq. ft
Counted as living area: Yes

Heated: Yes
Finished: Yes
Enclosed: Yes
Contiguous: Yes
Permitted: Yes
Wet space: No
Addition: No
Conversion: No

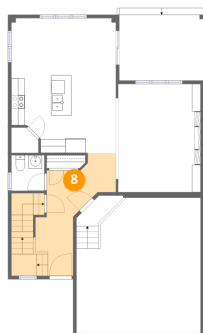
7 Floor 2 - Pantry



Dimensions: 4'0" x 3'9"
Area: 13 sq. ft
Counted as living area: Yes

Heated: Yes
Finished: Yes
Enclosed: Yes
Contiguous: Yes
Permitted: Yes
Wet space: No
Addition: No
Conversion: No

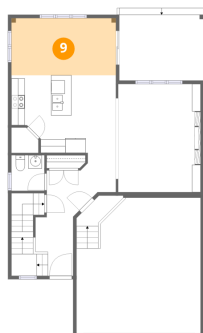
8 Floor 2 - Foyer



Dimensions: 10'2" x 15'5"
Area: 159 sq. ft
Counted as living area: Yes

Heated: Yes
Finished: Yes
Enclosed: Yes
Contiguous: Yes
Permitted: Yes
Wet space: No
Addition: No
Conversion: No

9 Floor 2 - Dining Area



Dimensions: 15'5" x 8'5"
Area: 129 sq. ft
Counted as living area: Yes

Heated: Yes
Finished: Yes
Enclosed: Yes
Contiguous: Yes
Permitted: Yes
Wet space: No
Addition: No
Conversion: No

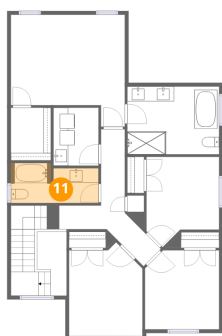
10 Floor 3 - Primary Bath



Dimensions: 12'5" x 9'2"
Area: 113 sq. ft
Counted as living area: Yes

Heated: Yes
Finished: Yes
Enclosed: Yes
Contiguous: Yes
Permitted: Yes
Wet space: Yes
Addition: No
Conversion: No

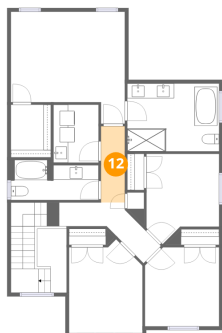
11 Floor 3 - Bath



Dimensions: 11'10" x 5'5"
Area: 59 sq. ft
Counted as living area: Yes

Heated: Yes
Finished: Yes
Enclosed: Yes
Contiguous: Yes
Permitted: Yes
Wet space: Yes
Addition: No
Conversion: No

12 Floor 3 - Hall



Dimensions: 3'3" x 10'3"
Area: 33 sq. ft
Counted as living area: Yes

Heated: Yes
Finished: Yes
Enclosed: Yes
Contiguous: Yes
Permitted: Yes
Wet space: No
Addition: No
Conversion: No

13 Floor 3 - Bedroom



Dimensions: 9'11" x 12'8"
Area: 113 sq. ft
Counted as living area: Yes

Heated: Yes
Finished: Yes
Enclosed: Yes
Contiguous: Yes
Permitted: Yes
Wet space: No
Addition: No
Conversion: No

14 Floor 3 - Primary Bedroom



Dimensions: 15'4" x 15'1"
Area: 197 sq. ft
Counted as living area: Yes

Heated: Yes
Finished: Yes
Enclosed: Yes
Contiguous: Yes
Permitted: Yes
Wet space: No
Addition: No
Conversion: No

15 Floor 3 - Open To Below



Dimensions: 3'11" x 8'7"
Area: 28 sq. ft
Counted as living area: No

Heated: No
Finished: No
Enclosed: No
Contiguous: Yes
Permitted: No
Wet space: No
Addition: No
Conversion: No

16 Floor 3 - Laundry



Dimensions: 6'1" x 7'10"
Area: 48 sq. ft
Counted as living area: Yes

Heated: Yes
Finished: Yes
Enclosed: Yes
Contiguous: Yes
Permitted: Yes
Wet space: No
Addition: No
Conversion: No

17 Floor 3 - Hall



Dimensions: 12'8" x 5'7"
Area: 109 sq. ft
Counted as living area: Yes

Heated: Yes
Finished: Yes
Enclosed: Yes
Contiguous: Yes
Permitted: Yes
Wet space: No
Addition: No
Conversion: No

18 Floor 3 - Bedroom



Dimensions: 9'10" x 12'2"
Area: 102 sq. ft
Counted as living area: Yes

Heated: Yes
Finished: Yes
Enclosed: Yes
Contiguous: Yes
Permitted: Yes
Wet space: No
Addition: No
Conversion: No

19 Floor 3 - W.I.C.



Dimensions: 5'5" x 7'1"
Area: 38 sq. ft
Counted as living area: Yes

Heated: Yes
Finished: Yes
Enclosed: Yes
Contiguous: Yes
Permitted: Yes
Wet space: No
Addition: No
Conversion: No

20 Floor 3 - Bedroom



Dimensions: 10'0" x 10'8"
Area: 104 sq. ft
Counted as living area: Yes

Heated: Yes
Finished: Yes
Enclosed: Yes
Contiguous: Yes
Permitted: Yes
Wet space: No
Addition: No
Conversion: No