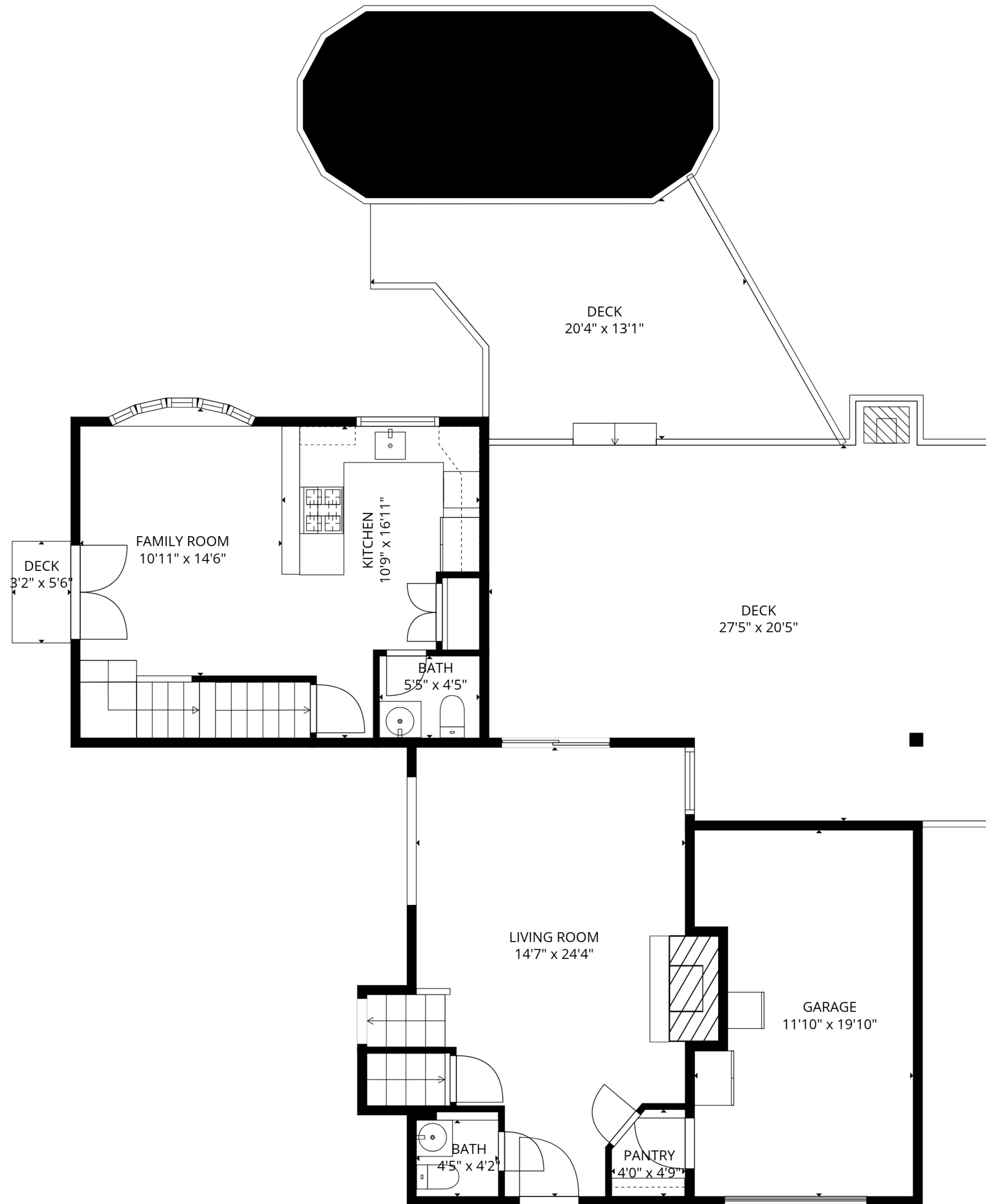


**TOTAL: 3007 sq. ft**

Basement: 365 sq. ft, 1st floor: 748 sq. ft, 2nd floor: 460 sq. ft, 3rd floor: 1119 sq. ft, 4th floor: 315 sq. ft  
 EXCLUDED AREAS: UTILITY: 93 sq. ft, BASEMENT: 369 sq. ft, GARAGE: 224 sq. ft,  
 DECK: 766 sq. ft, FIREPLACE: 12 sq. ft, WALLS: 338 sq. ft

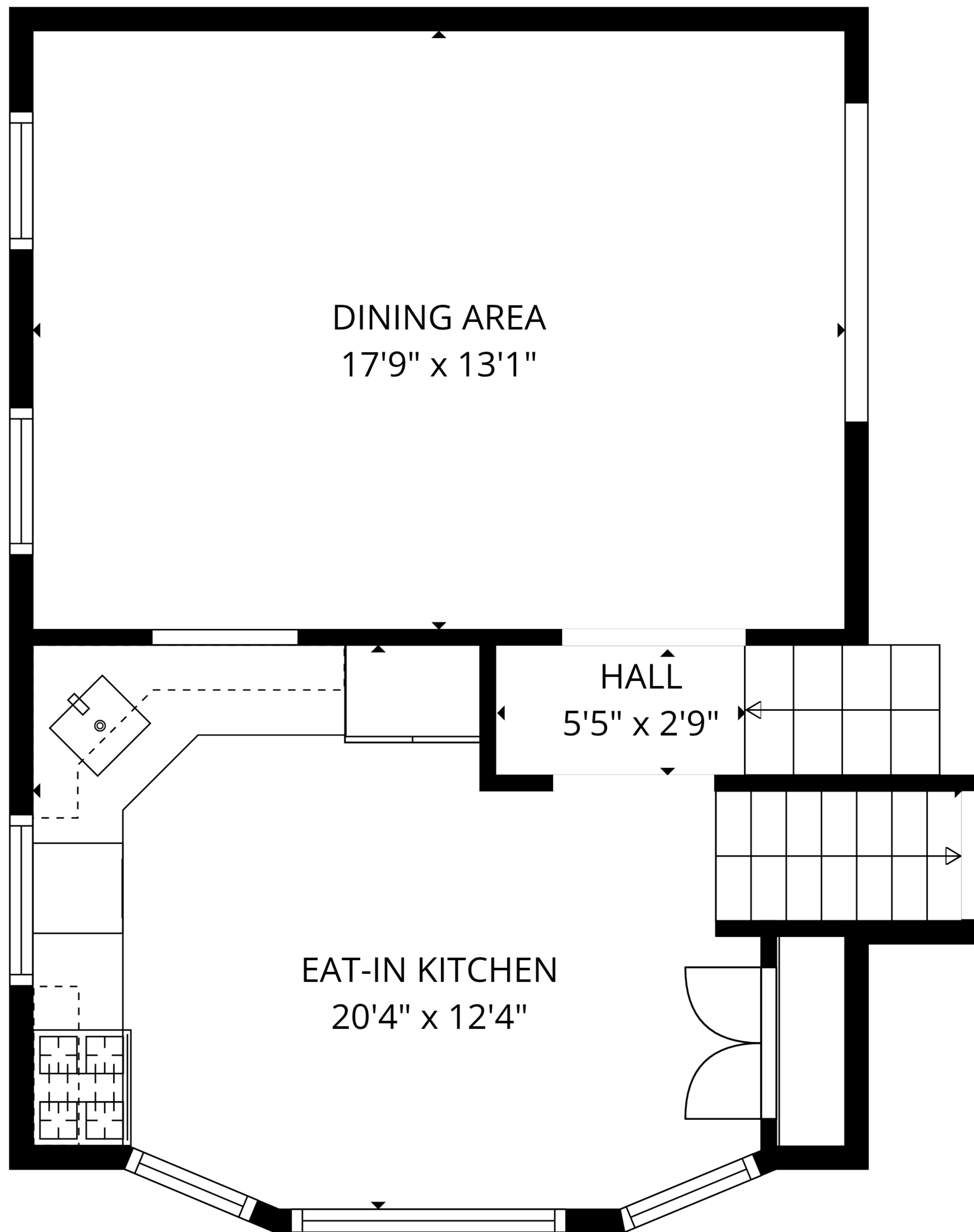
SIZES AND DIMENSIONS ARE ESTIMATED



**TOTAL: 3007 sq. ft**

Basement: 365 sq. ft, 1st floor: 748 sq. ft, 2nd floor: 460 sq. ft, 3rd floor: 1119 sq. ft, 4th floor: 315 sq. ft  
 EXCLUDED AREAS: UTILITY: 93 sq. ft, BASEMENT: 369 sq. ft, GARAGE: 224 sq. ft,  
 DECK: 766 sq. ft, FIREPLACE: 12 sq. ft, WALLS: 338 sq. ft

SIZES AND DIMENSIONS ARE ESTIMATED



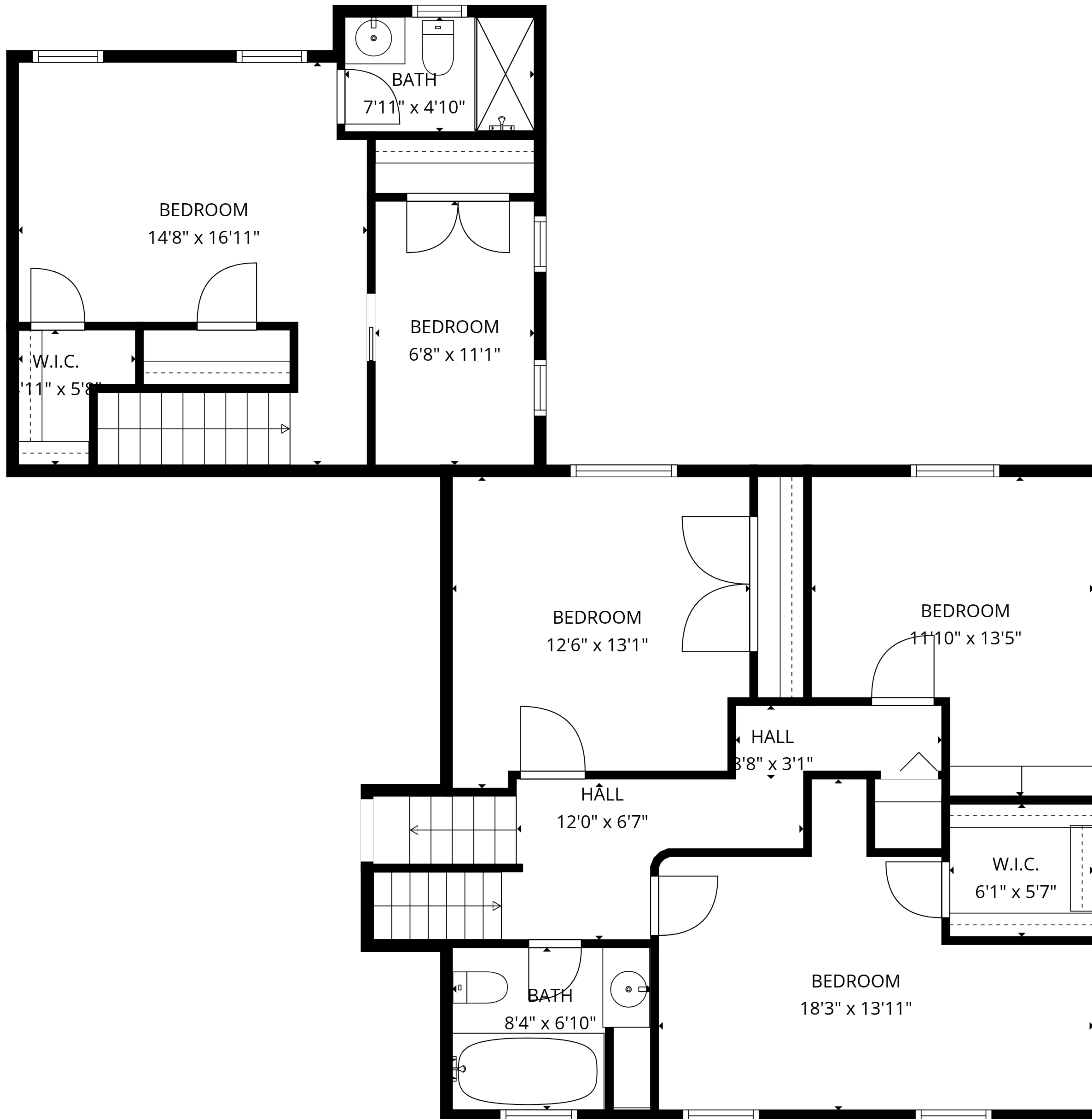
**TOTAL: 3007 sq. ft**

Basement: 365 sq. ft, 1st floor: 748 sq. ft, 2nd floor: 460 sq. ft, 3rd floor: 1119 sq. ft, 4th floor: 315 sq. ft

EXCLUDED AREAS: UTILITY: 93 sq. ft, BASEMENT: 369 sq. ft, GARAGE: 224 sq. ft,

DECK: 766 sq. ft, FIREPLACE: 12 sq. ft, WALLS: 338 sq. ft

SIZES AND DIMENSIONS ARE ESTIMATED



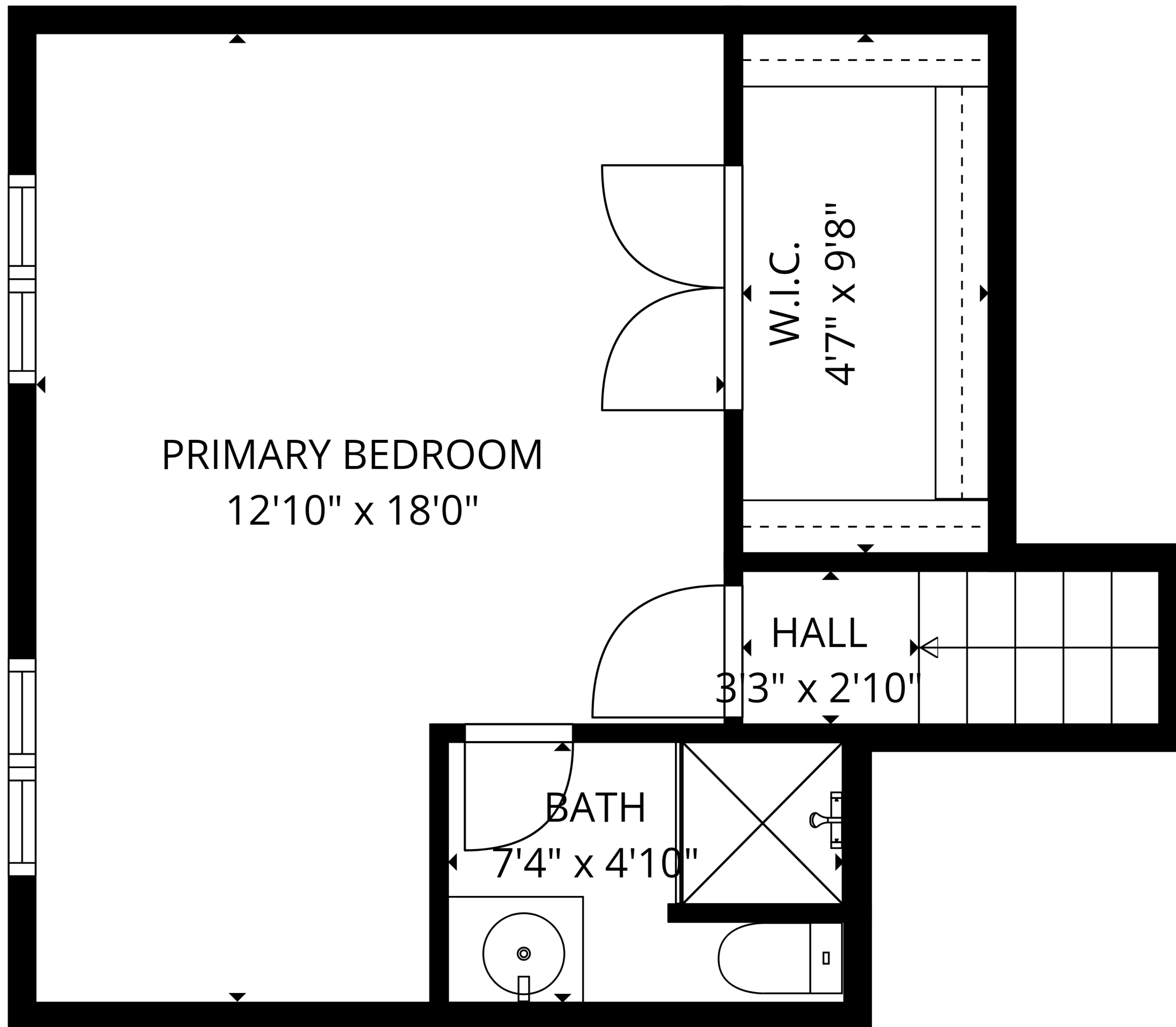
**TOTAL: 3007 sq. ft**

Basement: 365 sq. ft, 1st floor: 748 sq. ft, 2nd floor: 460 sq. ft, 3rd floor: 1119 sq. ft, 4th floor: 315 sq. ft

EXCLUDED AREAS: UTILITY: 93 sq. ft, BASEMENT: 369 sq. ft, GARAGE: 224 sq. ft,

DECK: 766 sq. ft, FIREPLACE: 12 sq. ft, WALLS: 338 sq. ft

SIZES AND DIMENSIONS ARE ESTIMATED



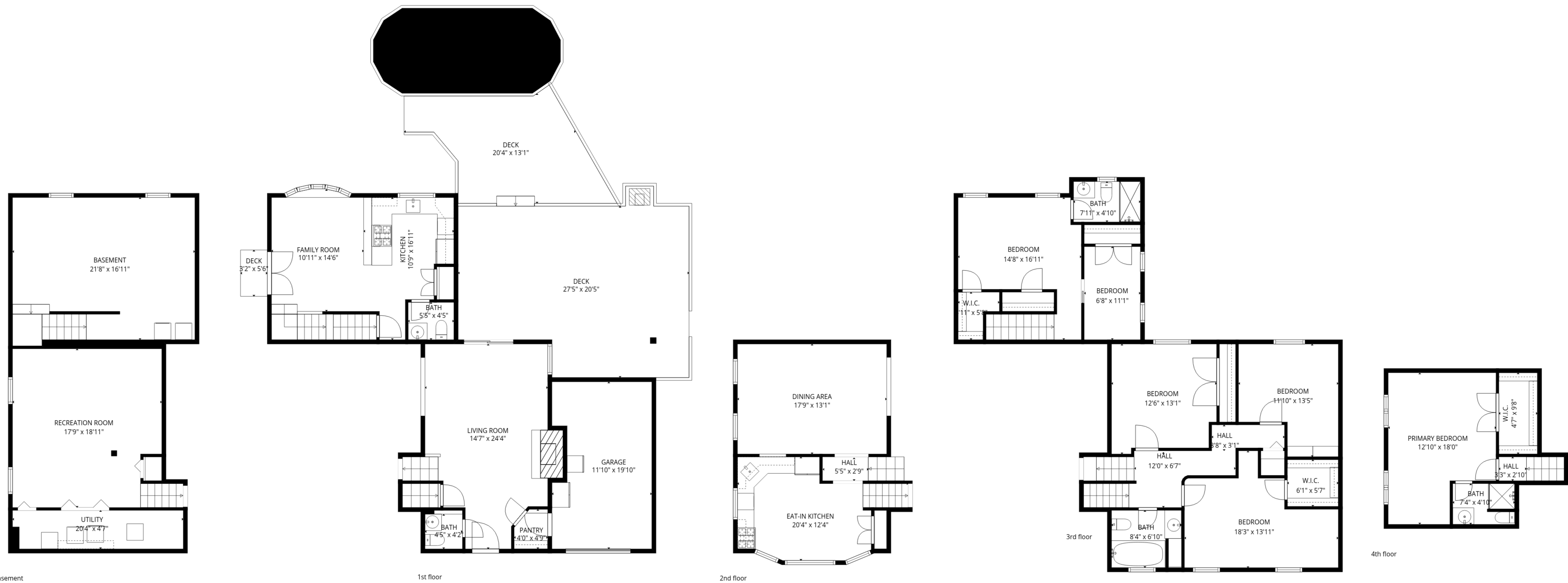
**TOTAL: 3007 sq. ft**

Basement: 365 sq. ft, 1st floor: 748 sq. ft, 2nd floor: 460 sq. ft, 3rd floor: 1119 sq. ft, 4th floor: 315 sq. ft

EXCLUDED AREAS: UTILITY: 93 sq. ft, BASEMENT: 369 sq. ft, GARAGE: 224 sq. ft,

DECK: 766 sq. ft, FIREPLACE: 12 sq. ft, WALLS: 338 sq. ft

SIZES AND DIMENSIONS ARE ESTIMATED



Basement

1st floor

2nd floor

3rd floor

4th floor

**TOTAL: 3007 sq. ft**

Basement: 365 sq. ft, 1st floor: 748 sq. ft, 2nd floor: 460 sq. ft, 3rd floor: 1119 sq. ft, 4th floor: 315 sq. ft

EXCLUDED AREAS: UTILITY: 93 sq. ft, BASEMENT: 369 sq. ft, GARAGE: 224 sq. ft,

DECK: 766 sq. ft, FIREPLACE: 12 sq. ft, WALLS: 338 sq. ft

SIZES AND DIMENSIONS ARE ESTIMATED