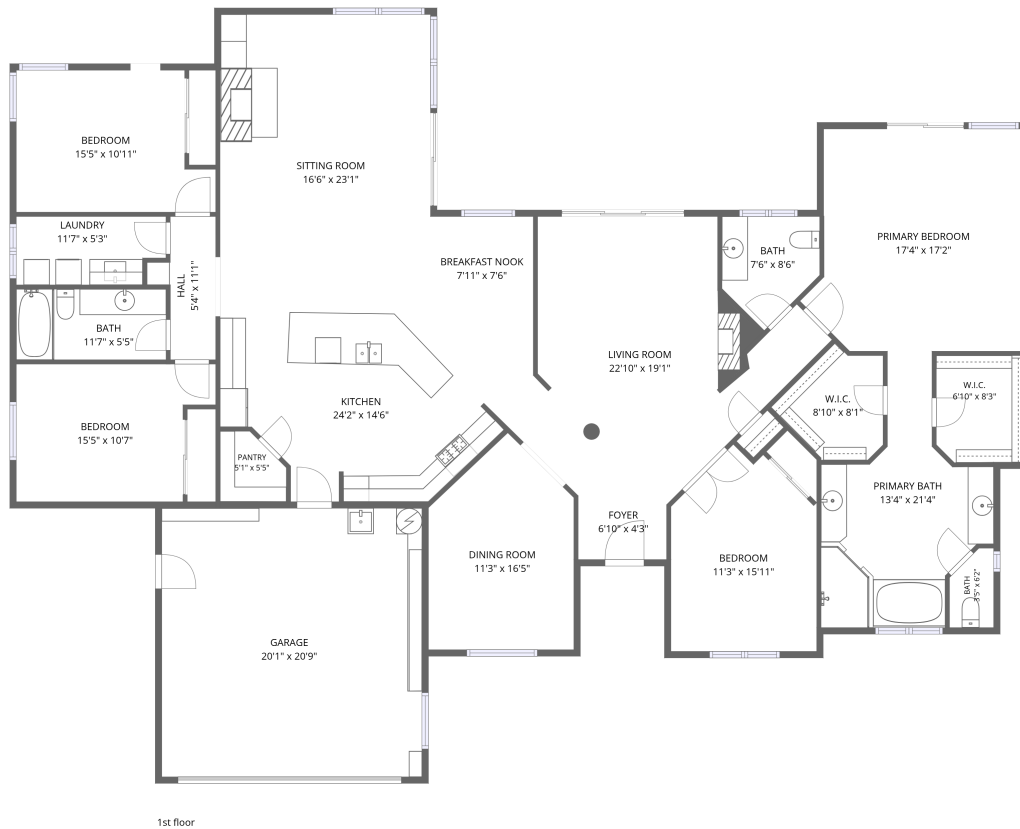


Home data report

# 3200 Rancho Viejo, Atascadero, CA, US



**Total Area: 2661 sq. ft**

1st Floor: 2661 sq. ft

Excluded: Garage 416 sq. ft, Walls: 168 sq. ft

## Property summary

 **1** Floors

 **4** Bedrooms

 **2** Bathrooms

Home data report

## 3200 Rancho Viejo, Atascadero, CA, US

 **1**  
Half baths

 **1**  
Garages

# 3200 Rancho Viejo, Atascadero, CA, US



## Room dimensions

Floor 1

Total: 2661 sqft

Excluded: 416 sqft

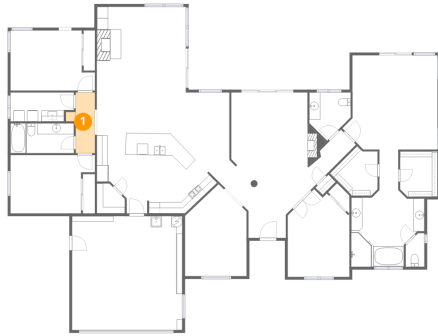
#		Dimensions	sqft	Counted as living area
1	Hall	5'4" x 11'1"	42 sq. ft	Yes
2	Primary Bedroom	17'4" x 17'2"	267 sq. ft	Yes
3	W.I.C.	6'10" x 8'3"	55 sq. ft	Yes
4	Bath	7'6" x 8'6"	52 sq. ft	Yes
5	Bath	11'7" x 5'5"	63 sq. ft	Yes
6	Bath	3'5" x 6'2"	18 sq. ft	Yes
7	Dining Room	11'3" x 16'5"	157 sq. ft	Yes
8	Bedroom	15'5" x 10'7"	144 sq. ft	Yes
9	Garage	20'1" x 20'9"	416 sq. ft	No
10	Primary Bath	13'4" x 21'4"	178 sq. ft	Yes
11	Foyer	6'10" x 4'3"	29 sq. ft	Yes

Home data report

**3200 Rancho Viejo,Atascadero,CA,US**

#		Dimensions	sqft	Counted as living area
12	Breakfast Nook	7'11" x 7'6"	60 sq. ft	Yes
13	Bedroom	15'5" x 10'11"	150 sq. ft	Yes
14	Laundry	11'7" x 5'3"	57 sq. ft	Yes
15	Pantry	5'1" x 5'5"	24 sq. ft	Yes
16	Kitchen	24'2" x 14'6"	285 sq. ft	Yes
17	Sitting Room	16'6" x 23'1"	376 sq. ft	Yes
18	Bedroom	11'3" x 15'11"	154 sq. ft	Yes
19	W.I.C.	8'10" x 8'1"	54 sq. ft	Yes
20	Living Room	22'10" x 19'1"	357 sq. ft	Yes

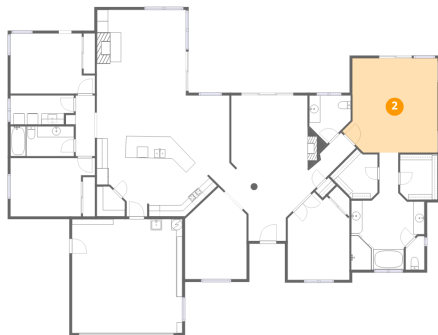
## 1 Floor 1 - Hall



Dimensions: 5'4" x 11'1"  
Area: 42 sq. ft  
Counted as living area: Yes

Heated: Yes  
Finished: Yes  
Enclosed: Yes  
Contiguous: Yes  
Permitted: Yes  
Wet space: No  
Addition: No  
Conversion: No

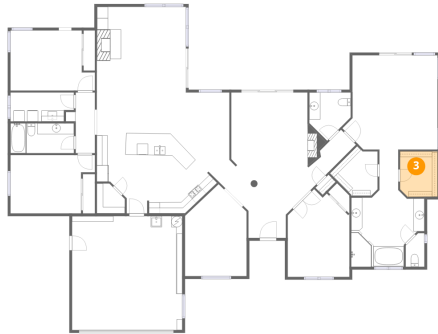
## 2 Floor 1 - Primary Bedroom



Dimensions: 17'4" x 17'2"  
Area: 267 sq. ft  
Counted as living area: Yes

Heated: Yes  
Finished: Yes  
Enclosed: Yes  
Contiguous: Yes  
Permitted: Yes  
Wet space: No  
Addition: No  
Conversion: No

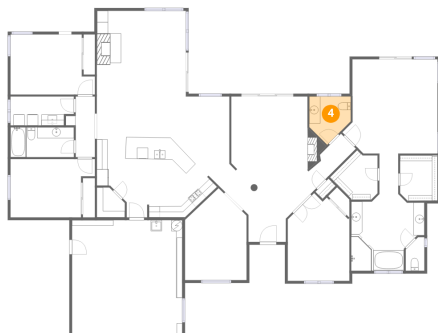
**3 Floor 1 - W.I.C.**



Dimensions: 6'10" x 8'3"  
Area: 55 sq. ft  
Counted as living area: Yes

Heated: Yes  
Finished: Yes  
Enclosed: Yes  
Contiguous: Yes  
Permitted: Yes  
Wet space: No  
Addition: No  
Conversion: No

**4 Floor 1 - Bath**



Dimensions: 7'6" x 8'6"  
Area: 52 sq. ft  
Counted as living area: Yes

Heated: Yes  
Finished: Yes  
Enclosed: Yes  
Contiguous: Yes  
Permitted: Yes  
Wet space: Yes  
Addition: No  
Conversion: No

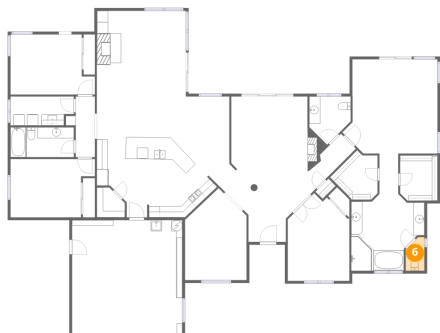
**5 Floor 1 - Bath**



Dimensions: 11'7" x 5'5"  
Area: 63 sq. ft  
Counted as living area: Yes

Heated: Yes  
Finished: Yes  
Enclosed: Yes  
Contiguous: Yes  
Permitted: Yes  
Wet space: Yes  
Addition: No  
Conversion: No

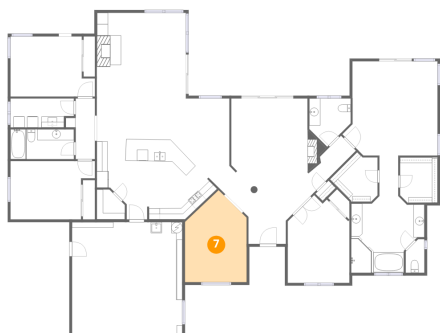
### 6 Floor 1 - Bath



Dimensions: 3'5" x 6'2"  
Area: 18 sq. ft  
Counted as living area: Yes

Heated: Yes  
Finished: Yes  
Enclosed: Yes  
Contiguous: Yes  
Permitted: Yes  
Wet space: Yes  
Addition: No  
Conversion: No

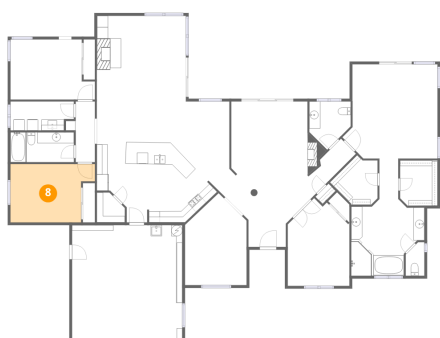
### 7 Floor 1 - Dining Room



Dimensions: 11'3" x 16'5"  
Area: 157 sq. ft  
Counted as living area: Yes

Heated: Yes  
Finished: Yes  
Enclosed: Yes  
Contiguous: Yes  
Permitted: Yes  
Wet space: No  
Addition: No  
Conversion: No

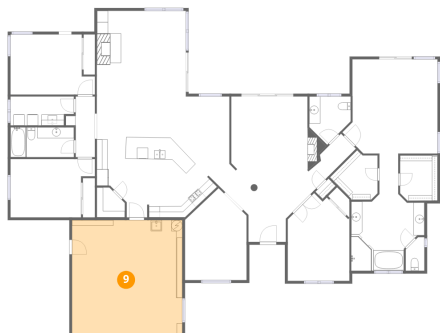
### 8 Floor 1 - Bedroom



Dimensions: 15'5" x 10'7"  
Area: 144 sq. ft  
Counted as living area: Yes

Heated: Yes  
Finished: Yes  
Enclosed: Yes  
Contiguous: Yes  
Permitted: Yes  
Wet space: No  
Addition: No  
Conversion: No

### 9 Floor 1 - Garage



Dimensions: 20'1" x 20'9"  
Area: 416 sq. ft  
Counted as living area: No

Heated: No  
Finished: No  
Enclosed: Yes  
Contiguous: Yes  
Permitted: Yes  
Wet space: No  
Addition: No  
Conversion: No

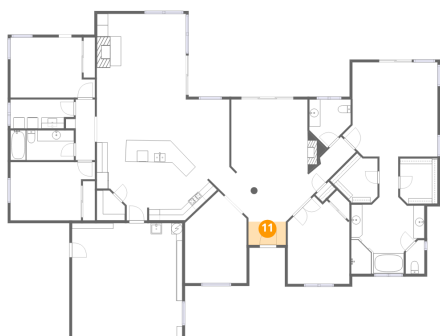
### 10 Floor 1 - Primary Bath



Dimensions: 13'4" x 21'4"  
Area: 178 sq. ft  
Counted as living area: Yes

Heated: Yes  
Finished: Yes  
Enclosed: Yes  
Contiguous: Yes  
Permitted: Yes  
Wet space: Yes  
Addition: No  
Conversion: No

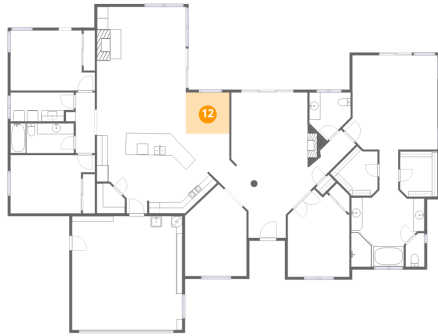
### 11 Floor 1 - Foyer



Dimensions: 6'10" x 4'3"  
Area: 29 sq. ft  
Counted as living area: Yes

Heated: Yes  
Finished: Yes  
Enclosed: Yes  
Contiguous: Yes  
Permitted: Yes  
Wet space: No  
Addition: No  
Conversion: No

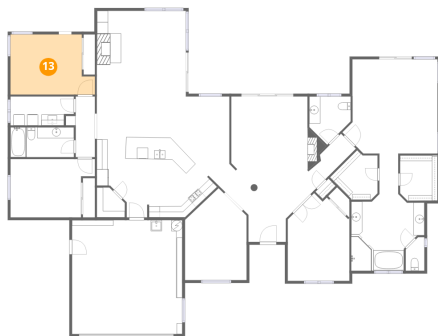
## 12 Floor 1 - Breakfast Nook



Dimensions: 7'11" x 7'6"  
Area: 60 sq. ft  
Counted as living area: Yes

Heated: Yes  
Finished: Yes  
Enclosed: Yes  
Contiguous: Yes  
Permitted: Yes  
Wet space: No  
Addition: No  
Conversion: No

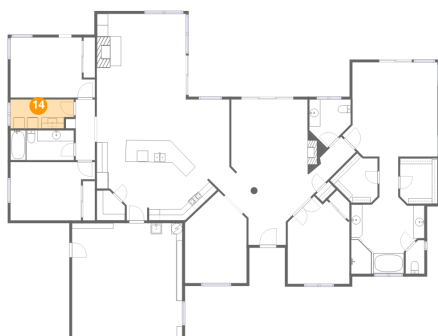
## 13 Floor 1 - Bedroom



Dimensions: 15'5" x 10'11"  
Area: 150 sq. ft  
Counted as living area: Yes

Heated: Yes  
Finished: Yes  
Enclosed: Yes  
Contiguous: Yes  
Permitted: Yes  
Wet space: No  
Addition: No  
Conversion: No

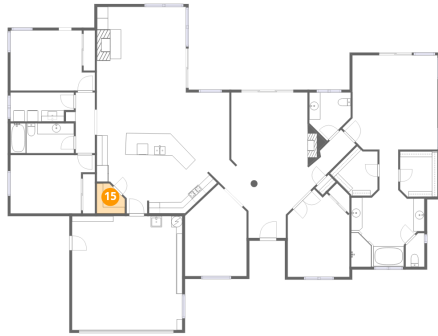
## 14 Floor 1 - Laundry



Dimensions: 11'7" x 5'3"  
Area: 57 sq. ft  
Counted as living area: Yes

Heated: Yes  
Finished: Yes  
Enclosed: Yes  
Contiguous: Yes  
Permitted: Yes  
Wet space: No  
Addition: No  
Conversion: No

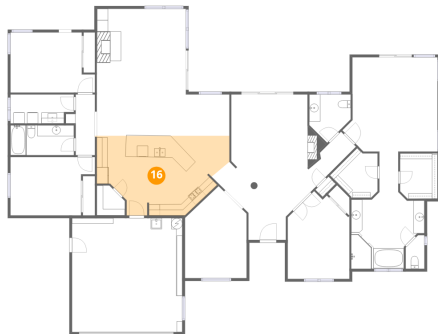
**15** Floor 1 - Pantry



Dimensions: 5'1" x 5'5"  
Area: 24 sq. ft  
Counted as living area: Yes

Heated: Yes  
Finished: Yes  
Enclosed: Yes  
Contiguous: Yes  
Permitted: Yes  
Wet space: No  
Addition: No  
Conversion: No

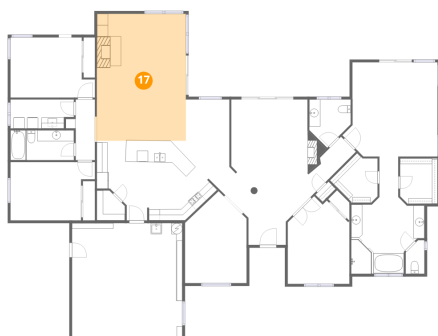
**16** Floor 1 - Kitchen



Dimensions: 24'2" x 14'6"  
Area: 285 sq. ft  
Counted as living area: Yes

Heated: Yes  
Finished: Yes  
Enclosed: Yes  
Contiguous: Yes  
Permitted: Yes  
Wet space: No  
Addition: No  
Conversion: No

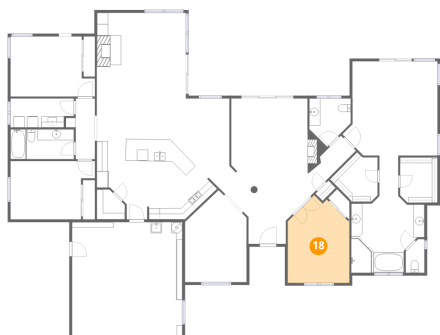
**17** Floor 1 - Sitting Room



Dimensions: 16'6" x 23'1"  
Area: 376 sq. ft  
Counted as living area: Yes

Heated: Yes  
Finished: Yes  
Enclosed: Yes  
Contiguous: Yes  
Permitted: Yes  
Wet space: No  
Addition: No  
Conversion: No

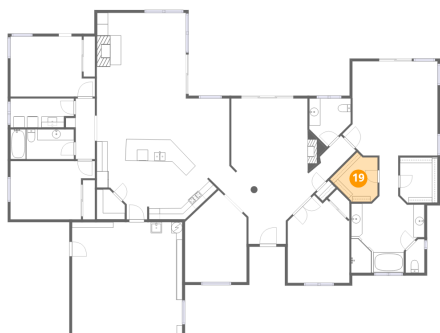
**18** Floor 1 - Bedroom



Dimensions: 11'3" x 15'11"  
Area: 154 sq. ft  
Counted as living area: Yes

Heated: Yes  
Finished: Yes  
Enclosed: Yes  
Contiguous: Yes  
Permitted: Yes  
Wet space: No  
Addition: No  
Conversion: No

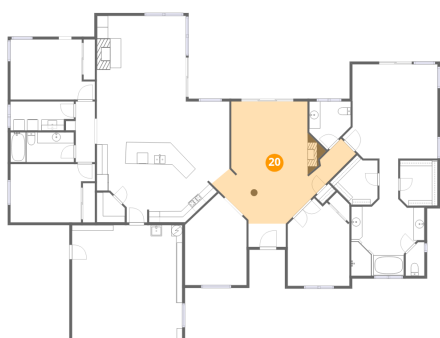
**19** Floor 1 - W.I.C.



Dimensions: 8'10" x 8'1"  
Area: 54 sq. ft  
Counted as living area: Yes

Heated: Yes  
Finished: Yes  
Enclosed: Yes  
Contiguous: Yes  
Permitted: Yes  
Wet space: No  
Addition: No  
Conversion: No

**20** Floor 1 - Living Room



Dimensions: 22'10" x 19'1"  
Area: 357 sq. ft  
Counted as living area: Yes

Heated: Yes  
Finished: Yes  
Enclosed: Yes  
Contiguous: Yes  
Permitted: Yes  
Wet space: No  
Addition: No  
Conversion: No