

Home report

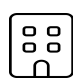
3001 Timberlane Avenue, Roanoke, Virginia 24018, United States




Total Area: 1912 sq. ft

Below Ground: 0 sq. ft, Floor 2: 638 sq. ft, Floor 3: 564 sq. ft, Floor 4: 710 sq. ft  
Excluded: Undefined 16 sq. ft, Garage 482 sq. ft, Fireplace 12 sq. ft, Deck 321 sq. ft, Patio 136 sq. ft, Embeddedwindow 10 sq. ft, Walls: 221 sq. ft

Property summary

 **4** Floors

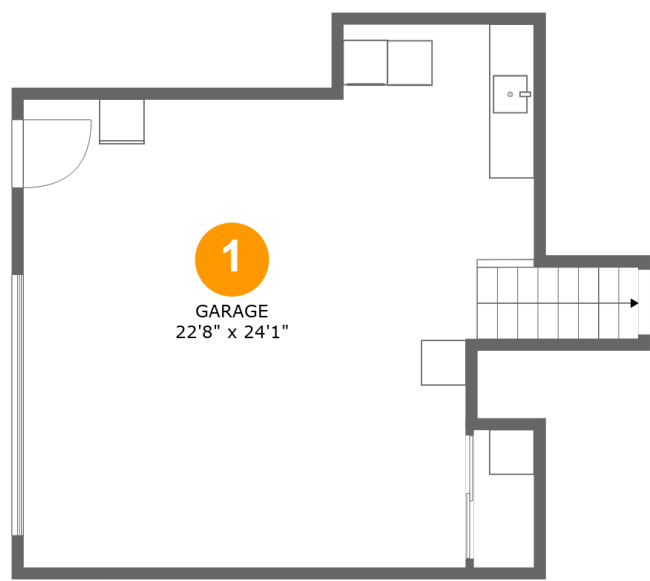
 **4** Bedrooms

 **3** Bathrooms

 **1** Garages

Home report

3001 Timberlane Avenue, Roanoke, Virginia 24018, United States



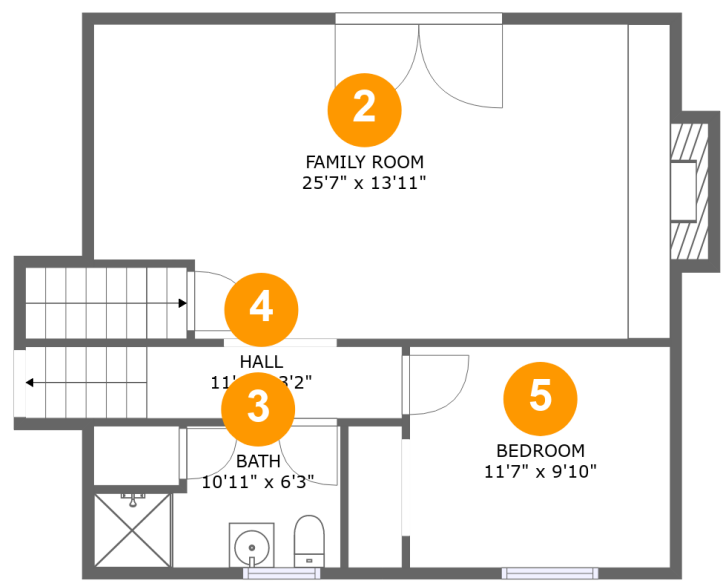
Room dimensions

Floor 1 Below ground Total:0sqft    Excluded: 498sqft

#		Max Dimensions	sqft	Included
1	Garage	22'8" x 24'1"	482 sq. ft	No

Home report

3001 Timberlane Avenue, Roanoke, Virginia 24018, United States



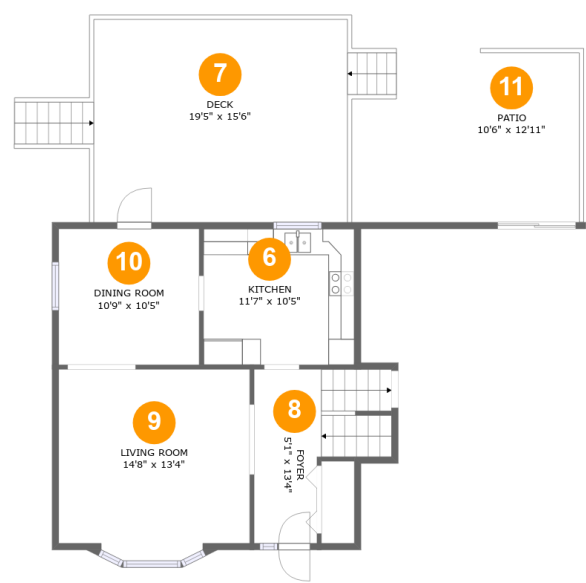
Room dimensions

Floor 2 Total:638sqft   Excluded: 12sqft

#		Max Dimensions	sqft	Included
2	Family Room	25'7" x 13'11"	351 sq. ft	Yes
3	Bath	10'11" x 6'3"	56 sq. ft	Yes
4	Hall	11'4" x 3'2"	53 sq. ft	Yes
5	Bedroom	11'7" x 9'10"	113 sq. ft	Yes

Home report

3001 Timberlane Avenue, Roanoke, Virginia 24018, United States



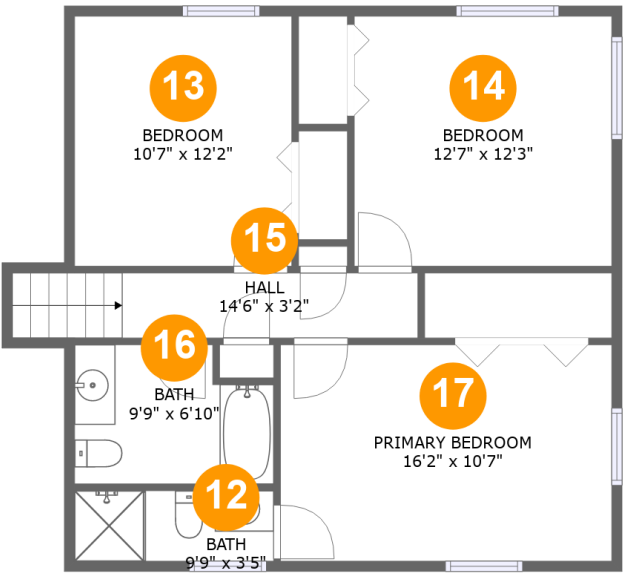
Room dimensions

Floor 3 Total:564sqft Excluded: 467sqft

#		Max Dimensions	sqft	Included
6	Kitchen	11'7" x 10'5"	120 sq. ft	Yes
7	Deck	19'5" x 15'6"	321 sq. ft	No
8	Foyer	5'1" x 13'4"	102 sq. ft	Yes
9	Living Room	14'8" x 13'4"	195 sq. ft	Yes
10	Dining Room	10'9" x 10'5"	112 sq. ft	Yes
11	Patio	10'6" x 12'11"	136 sq. ft	No

Home report

3001 Timberlane Avenue, Roanoke, Virginia 24018, United States



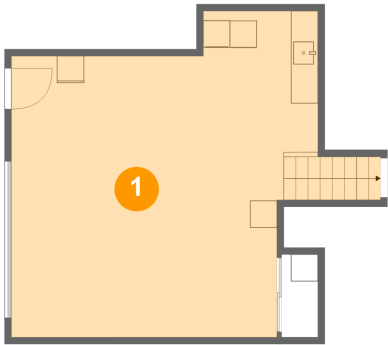
Room dimensions

Floor 4 Total:710sqft   Excluded: 0sqft

#		Max Dimensions	sqft	Included
12	Bath	9'9" x 3'5"	34 sq. ft	Yes
13	Bedroom	10'7" x 12'2"	130 sq. ft	Yes
14	Bedroom	12'7" x 12'3"	154 sq. ft	Yes
15	Hall	14'6" x 3'2"	63 sq. ft	Yes
16	Bath	9'9" x 6'10"	60 sq. ft	Yes
17	Primary Bedroom	16'2" x 10'7"	171 sq. ft	Yes

3001 Timberlane Avenue, Roanoke, Virginia 24018, United States

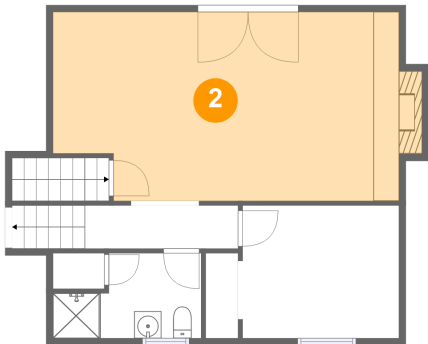
1 Floor 1 - Garage



Max Dimensions: 22'8" x 24'1"  
Calculated Area: 482 sq. ft  
Included: No

Heated: No  
Finished: No  
Enclosed: Yes  
Contiguous: Yes  
Permitted: Yes  
Wet space: No  
Addition: No  
Conversion: No

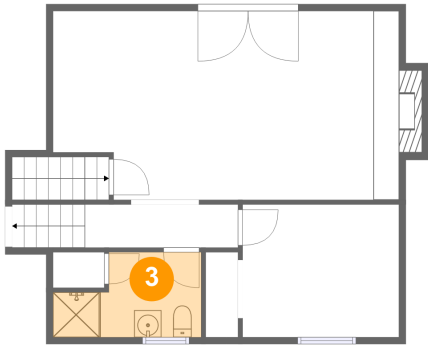
2 Floor 2 - Family Room



Max Dimensions: 25'7" x 13'11"  
Calculated Area: 351 sq. ft  
Included: Yes

Heated: Yes  
Finished: Yes  
Enclosed: Yes  
Contiguous: Yes  
Permitted: Yes  
Wet space: No  
Addition: No  
Conversion: No

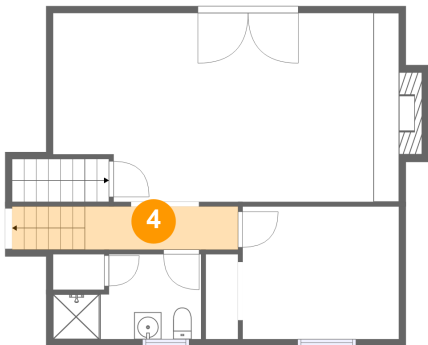
3 Floor 2 - Bath



Max Dimensions: 10'11" x 6'3"  
Calculated Area: 56 sq. ft  
Included: Yes

Heated: Yes  
Finished: Yes  
Enclosed: Yes  
Contiguous: Yes  
Permitted: Yes  
Wet space: Yes  
Addition: No  
Conversion: No

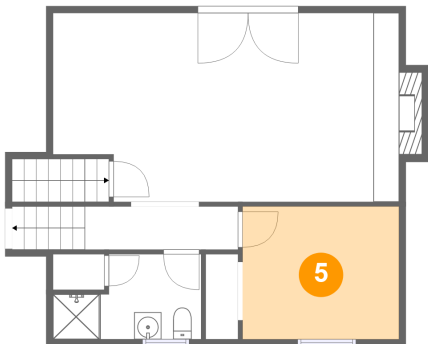
4 Floor 2 - Hall



Max Dimensions: 11'4" x 3'2"  
Calculated Area: 53 sq. ft  
Included: Yes

Heated: Yes  
Finished: Yes  
Enclosed: Yes  
Contiguous: Yes  
Permitted: Yes  
Wet space: No  
Addition: No  
Conversion: No

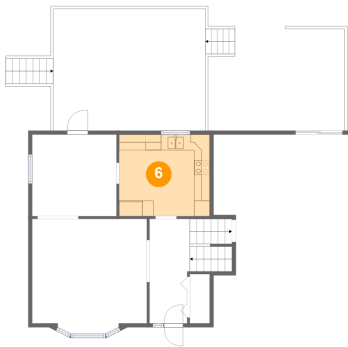
5 Floor 2 - Bedroom



Max Dimensions: 11'7" x 9'10"  
Calculated Area: 113 sq. ft  
Included: Yes

Heated: Yes  
Finished: Yes  
Enclosed: Yes  
Contiguous: Yes  
Permitted: Yes  
Wet space: No  
Addition: No  
Conversion: No

6 Floor 3 - Kitchen



Max Dimensions: 11'7" x 10'5"  
Calculated Area: 120 sq. ft  
Included: Yes

Heated: Yes  
Finished: Yes  
Enclosed: Yes  
Contiguous: Yes  
Permitted: Yes  
Wet space: No  
Addition: No  
Conversion: No

7 Floor 3 - Deck



Max Dimensions: 19'5" x 15'6"  
Calculated Area: 321 sq. ft  
Included: No

Heated: No  
Finished: Yes  
Enclosed: No  
Contiguous: Yes  
Permitted: Yes  
Wet space: No  
Addition: No  
Conversion: No

8 Floor 3 - Foyer



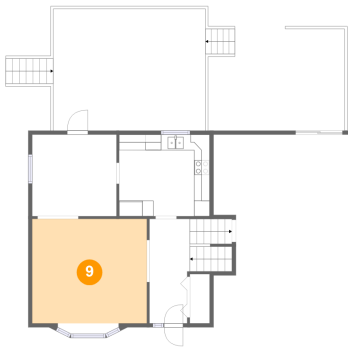
Max Dimensions: 5'1" x 13'4"  
Calculated Area: 102 sq. ft  
Included: Yes

Heated: Yes  
Finished: Yes  
Enclosed: Yes  
Contiguous: Yes  
Permitted: Yes  
Wet space: No  
Addition: No  
Conversion: No



3001 Timberlane Avenue, Roanoke, Virginia 24018, United States

9 Floor 3 - Living Room



Max Dimensions: 14'8" x 13'4"  
Calculated Area: 195 sq. ft  
Included: Yes

Heated: Yes  
Finished: Yes  
Enclosed: Yes  
Contiguous: Yes  
Permitted: Yes  
Wet space: No  
Addition: No  
Conversion: No

10 Floor 3 - Dining Room



Max Dimensions: 10'9" x 10'5"  
Calculated Area: 112 sq. ft  
Included: Yes

Heated: Yes  
Finished: Yes  
Enclosed: Yes  
Contiguous: Yes  
Permitted: Yes  
Wet space: No  
Addition: No  
Conversion: No

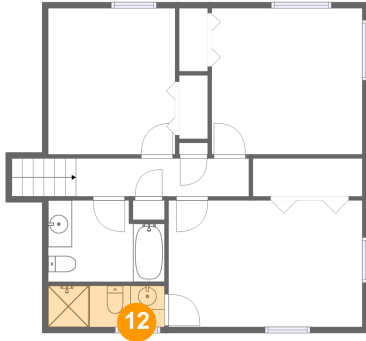
11 Floor 3 - Patio



Max Dimensions: 10'6" x 12'11"  
Calculated Area: 136 sq. ft  
Included: No

Heated: No  
Finished: Yes  
Enclosed: No  
Contiguous: Yes  
Permitted: Yes  
Wet space: No  
Addition: No  
Conversion: No

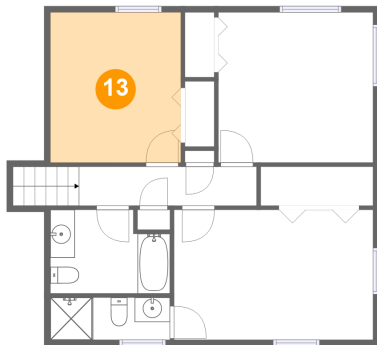
## 12 Floor 4 - Bath



Max Dimensions: 9'9" x 3'5"  
Calculated Area: 34 sq. ft  
Included: Yes

Heated: Yes  
Finished: Yes  
Enclosed: Yes  
Contiguous: Yes  
Permitted: Yes  
Wet space: Yes  
Addition: No  
Conversion: No

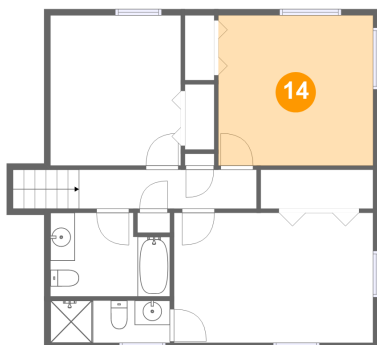
## 13 Floor 4 - Bedroom



Max Dimensions: 10'7" x 12'2"  
Calculated Area: 130 sq. ft  
Included: Yes

Heated: Yes  
Finished: Yes  
Enclosed: Yes  
Contiguous: Yes  
Permitted: Yes  
Wet space: No  
Addition: No  
Conversion: No

## 14 Floor 4 - Bedroom

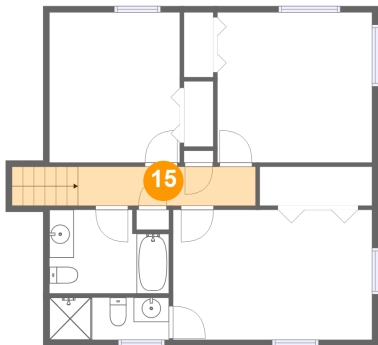


Max Dimensions: 12'7" x 12'3"  
Calculated Area: 154 sq. ft  
Included: Yes

Heated: Yes  
Finished: Yes  
Enclosed: Yes  
Contiguous: Yes  
Permitted: Yes  
Wet space: No  
Addition: No  
Conversion: No

3001 Timberlane Avenue, Roanoke, Virginia 24018, United States

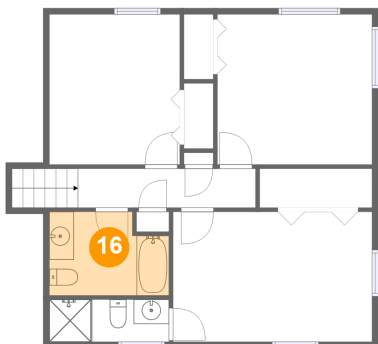
15 Floor 4 - Hall



Max Dimensions: 14'6" x 3'2"  
Calculated Area: 63 sq. ft  
Included: Yes

Heated: Yes  
Finished: Yes  
Enclosed: Yes  
Contiguous: Yes  
Permitted: Yes  
Wet space: No  
Addition: No  
Conversion: No

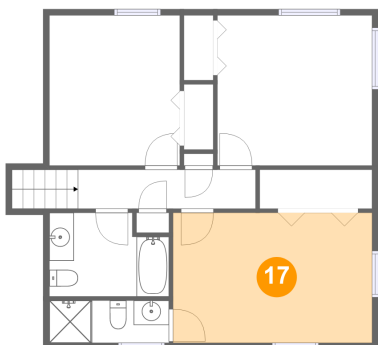
16 Floor 4 - Bath



Max Dimensions: 9'9" x 6'10"  
Calculated Area: 60 sq. ft  
Included: Yes

Heated: Yes  
Finished: Yes  
Enclosed: Yes  
Contiguous: Yes  
Permitted: Yes  
Wet space: Yes  
Addition: No  
Conversion: No

17 Floor 4 - Primary Bedroom



Max Dimensions: 16'2" x 10'7"  
Calculated Area: 171 sq. ft  
Included: Yes

Heated: Yes  
Finished: Yes  
Enclosed: Yes  
Contiguous: Yes  
Permitted: Yes  
Wet space: No  
Addition: No  
Conversion: No