

Home report

2010 Sheffield Ln, Bartlesville, Washington County, Oklahoma,  
United States, 74006



**Total Area: 2904 sq. ft**  
Floor 1: 2904 sq. ft  
Excluded: Garage 543 sq. ft, Deck 93 sq. ft, Fireplace 14 sq. ft, Walls: 185 sq. ft

Property summary

 **1** Floors

 **4** Bedrooms

 **2** Bathrooms

Home report

**2010 Sheffield Ln, Bartlesville, Washington County, Oklahoma,  
United States, 74006**



**1**  
Half baths



**1**  
Garages

2010 Sheffield Ln, Bartlesville, Washington County, Oklahoma,  
United States, 74006



**Total:2904sqft      Excluded: 650sqft**

Scan captured on Wed, 01 Oct 2025 18:17:38 GMT

## Home report

**2010 Sheffield Ln, Bartlesville, Washington County, Oklahoma,  
United States, 74006**

#		Max Dimensions	sqft	Included
12	Family Room	16'7" x 16'0"	276 sq. ft	Yes
13	Bedroom	12'11" x 13'3"	150 sq. ft	Yes
14	Laundry	8'11" x 7'2"	64 sq. ft	Yes
15	Room	7'3" x 11'8"	77 sq. ft	Yes
16	Living Room	17'0" x 10'11"	185 sq. ft	Yes
17	W.I.C.	5'9" x 6'9"	39 sq. ft	Yes
18	Bedroom	11'9" x 10'10"	127 sq. ft	Yes
19	Pantry	7'3" x 5'8"	34 sq. ft	Yes
20	WC	7'11" x 3'6"	28 sq. ft	Yes

2010 Sheffield Ln, Bartlesville, Washington County, Oklahoma,  
United States, 74006

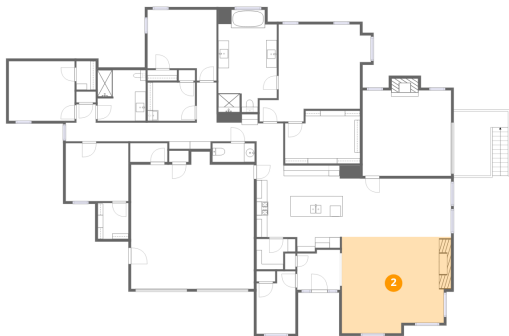
## 1 Floor 1 - Primary Bedroom



Max Dimensions: 18'9" x  
18'2"  
Calculated Area: 276 sq. ft  
Included: Yes

Heated: Yes  
Finished: Yes  
Enclosed: Yes  
Contiguous:  
Yes  
Permitted: Yes  
Wet space: No  
Addition: No  
Conversion: No

## 2 Floor 1 - Living Room

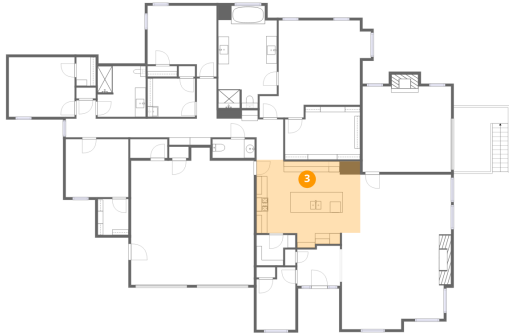


Max Dimensions: 19'1" x  
18'1"  
Calculated Area: 342 sq. ft  
Included: Yes

Heated: Yes  
Finished: Yes  
Enclosed: Yes  
Contiguous:  
Yes  
Permitted: Yes  
Wet space: No  
Addition: No  
Conversion: No

2010 Sheffield Ln, Bartlesville, Washington County, Oklahoma,  
United States, 74006

### 3 Floor 1 - Kitchen



Max Dimensions: 19'5" x 16'1"  
Calculated Area: 280 sq. ft  
Included: Yes

Heated: Yes  
Finished: Yes  
Enclosed: Yes  
Contiguous: Yes  
Permitted: Yes  
Wet space: No  
Addition: No  
Conversion: No

### 4 Floor 1 - Foyer



Max Dimensions: 8'0" x 7'6"  
Calculated Area: 58 sq. ft  
Included: Yes

Heated: Yes  
Finished: Yes  
Enclosed: Yes  
Contiguous: Yes  
Permitted: Yes  
Wet space: No  
Addition: No  
Conversion: No

### 5 Floor 1 - Deck



Max Dimensions: 10'2" x 12'0"  
Calculated Area: 93 sq. ft  
Included: No

Heated: No  
Finished: No  
Enclosed: No  
Contiguous: Yes  
Permitted: Yes  
Wet space: No  
Addition: No  
Conversion: No

2010 Sheffield Ln, Bartlesville, Washington County, Oklahoma,  
United States, 74006

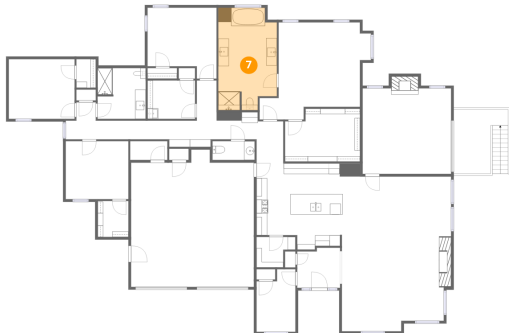
## 6 Floor 1 - W.I.C.



Max Dimensions: 14'0" x 9'11"  
Calculated Area: 130 sq. ft  
Included: Yes

Heated: Yes  
Finished: Yes  
Enclosed: Yes  
Contiguous: Yes  
Permitted: Yes  
Wet space: No  
Addition: No  
Conversion: No

## 7 Floor 1 - Primary Bath



Max Dimensions: 10'11" x 19'2"  
Calculated Area: 193 sq. ft  
Included: Yes

Heated: Yes  
Finished: Yes  
Enclosed: Yes  
Contiguous: Yes  
Permitted: Yes  
Wet space: Yes  
Addition: No  
Conversion: No

## 8 Floor 1 - Bedroom



Max Dimensions: 12'4" x 11'2"  
Calculated Area: 138 sq. ft  
Included: Yes

Heated: Yes  
Finished: Yes  
Enclosed: Yes  
Contiguous: Yes  
Permitted: Yes  
Wet space: No  
Addition: No  
Conversion: No

2010 Sheffield Ln, Bartlesville, Washington County, Oklahoma,  
United States, 74006

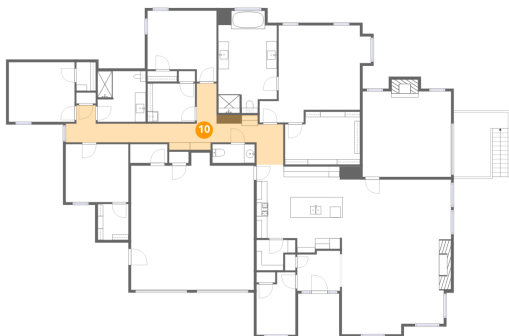
## 9 Floor 1 - Bath



Max Dimensions: 9'0" x 9'6"  
Calculated Area: 85 sq. ft  
Included: Yes

Heated: Yes  
Finished: Yes  
Enclosed: Yes  
Contiguous: Yes  
Permitted: Yes  
Wet space: Yes  
Addition: No  
Conversion: No

## 10 Floor 1 - Hall



Max Dimensions: 40'9" x  
12'5"  
Calculated Area: 227 sq. ft  
Included: Yes

Heated: Yes  
Finished: Yes  
Enclosed: Yes  
Contiguous:  
Yes  
Permitted: Yes  
Wet space: No  
Addition: No  
Conversion: No

## 11 Floor 1 - Garage



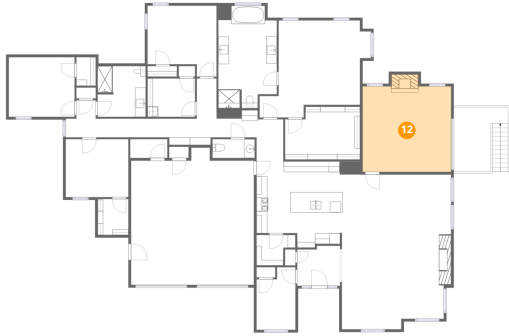
Max Dimensions: 23'0" x  
25'8"  
Calculated Area: 543 sq. ft  
Included: No

Heated: No  
Finished: No  
Enclosed: Yes  
Contiguous:  
Yes  
Permitted: Yes  
Wet space: No  
Addition: No  
Conversion: No



2010 Sheffield Ln, Bartlesville, Washington County, Oklahoma,  
United States, 74006

## 12 Floor 1 - Family Room



Max Dimensions: 16'7" x 16'0"  
Calculated Area: 276 sq. ft  
Included: Yes

Heated: Yes  
Finished: Yes  
Enclosed: Yes  
Contiguous: Yes  
Permitted: Yes  
Wet space: No  
Addition: No  
Conversion: No

## 13 Floor 1 - Bedroom



Max Dimensions: 12'11" x 13'3"  
Calculated Area: 150 sq. ft  
Included: Yes

Heated: Yes  
Finished: Yes  
Enclosed: Yes  
Contiguous: Yes  
Permitted: Yes  
Wet space: No  
Addition: No  
Conversion: No

## 14 Floor 1 - Laundry



Max Dimensions: 8'11" x 7'2"  
Calculated Area: 64 sq. ft  
Included: Yes

Heated: Yes  
Finished: Yes  
Enclosed: Yes  
Contiguous: Yes  
Permitted: Yes  
Wet space: No  
Addition: No  
Conversion: No

2010 Sheffield Ln, Bartlesville, Washington County, Oklahoma,  
United States, 74006

## 15 Floor 1 - Room



Max Dimensions: 7'3" x 11'8"  
Calculated Area: 77 sq. ft  
Included: Yes

Heated: Yes  
Finished: Yes  
Enclosed: Yes  
Contiguous: Yes  
Permitted: Yes  
Wet space: No  
Addition: No  
Conversion: No

## 16 Floor 1 - Living Room



Max Dimensions: 17'0" x 10'11"  
Calculated Area: 185 sq. ft  
Included: Yes

Heated: Yes  
Finished: Yes  
Enclosed: Yes  
Contiguous: Yes  
Permitted: Yes  
Wet space: No  
Addition: No  
Conversion: No

## 17 Floor 1 - W.I.C.



Max Dimensions: 5'9" x 6'9"  
Calculated Area: 39 sq. ft  
Included: Yes

Heated: Yes  
Finished: Yes  
Enclosed: Yes  
Contiguous: Yes  
Permitted: Yes  
Wet space: No  
Addition: No  
Conversion: No

2010 Sheffield Ln, Bartlesville, Washington County, Oklahoma,  
United States, 74006

**18** Floor 1 - Bedroom



Max Dimensions: 11'9" x 10'10"  
Calculated Area: 127 sq. ft  
Included: Yes

Heated: Yes  
Finished: Yes  
Enclosed: Yes  
Contiguous: Yes  
Permitted: Yes  
Wet space: No  
Addition: No  
Conversion: No

**19** Floor 1 - Pantry



Max Dimensions: 7'3" x 5'8"  
Calculated Area: 34 sq. ft  
Included: Yes

Heated: Yes  
Finished: Yes  
Enclosed: Yes  
Contiguous: Yes  
Permitted: Yes  
Wet space: No  
Addition: No  
Conversion: No

**20** Floor 1 - WC



Max Dimensions: 7'11" x 3'6"  
Calculated Area: 28 sq. ft  
Included: Yes

Heated: Yes  
Finished: Yes  
Enclosed: Yes  
Contiguous: Yes  
Permitted: Yes  
Wet space: Yes  
Addition: No  
Conversion: No