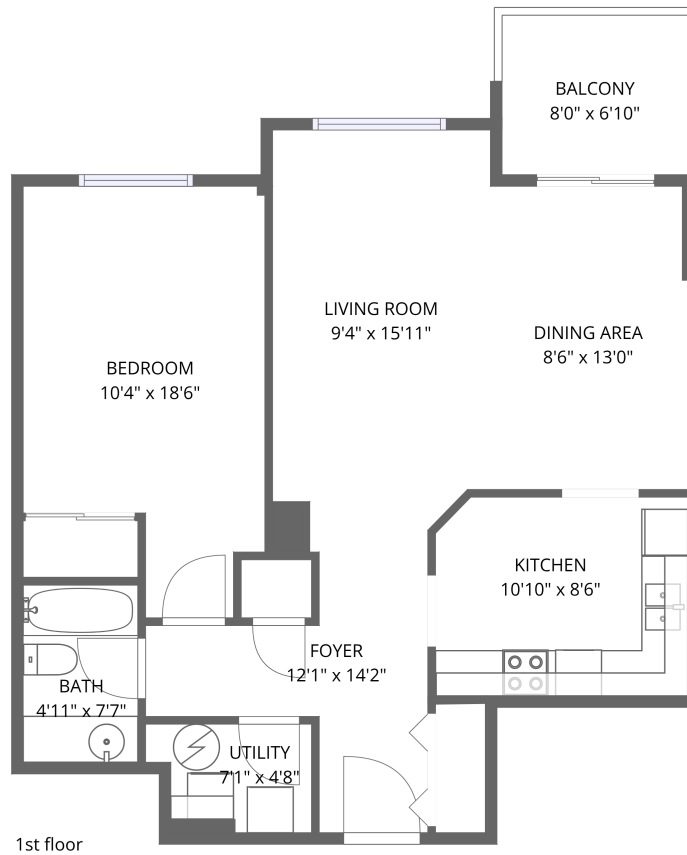


Home data report

215 Parkdale Avenue, Hintonburg, Tunney's Pasture, Ottawa, Ontario, Canada, K1Y 4T8, 1403



**Total Area: 743 sq. ft**

1st Floor: 743 sq. ft

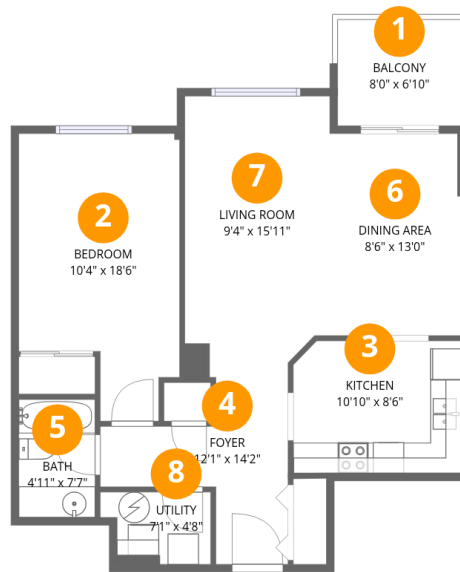
Excluded: Balcony 54 sq. ft, Walls: 0 sq. ft

## Property summary



## Home data report

215 Parkdale Avenue, Hintonburg, Tunney's Pasture, Ottawa, Ontario, Canada, K1Y 4T8, 1403



## Room dimensions

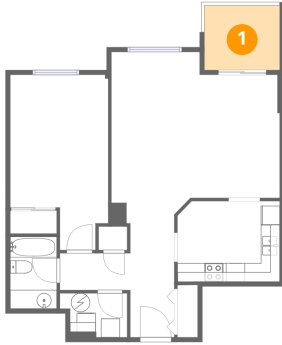
Floor 1

Total:743sqft Excluded: 54sqft

#		Dimensions	sqft	Counted as living area
1	Balcony	8'0" x 6'10"	54 sq. ft	No
2	Bedroom	10'4" x 18'6"	192 sq. ft	Yes
3	Kitchen	10'10" x 8'6"	92 sq. ft	Yes
4	Foyer	12'1" x 14'2"	172 sq. ft	Yes
5	Bath	4'11" x 7'7"	37 sq. ft	Yes
6	Dining Area	8'6" x 13'0"	110 sq. ft	Yes
7	Living Room	9'4" x 15'11"	149 sq. ft	Yes
8	Utility	7'1" x 4'8"	33 sq. ft	Yes

215 Parkdale Avenue, Hintonburg, Tunney's Pasture, Ottawa,  
Ontario, Canada, K1Y 4T8, 1403

## 1 Floor 1 - Balcony



Dimensions: 8'0" x 6'10"  
Area: 54 sq. ft  
Counted as living area: No

Heated: No  
Finished: No  
Enclosed: No  
Contiguous: Yes  
Permitted: Yes  
Wet space: No  
Addition: No  
Conversion: No

## 2 Floor 1 - Bedroom

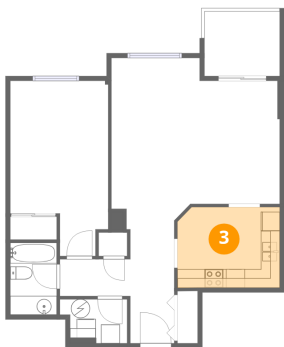


Dimensions: 10'4" x 18'6"  
Area: 192 sq. ft  
Counted as living area: Yes

Heated: Yes  
Finished: Yes  
Enclosed: Yes  
Contiguous: Yes  
Permitted: Yes  
Wet space: No  
Addition: No  
Conversion: No

215 Parkdale Avenue, Hintonburg, Tunney's Pasture, Ottawa, Ontario, Canada, K1Y 4T8, 1403

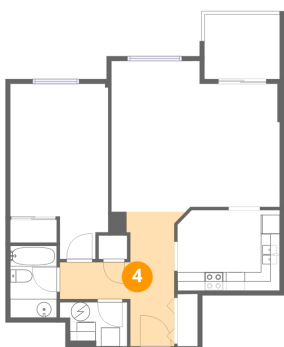
### 3 Floor 1 - Kitchen



Dimensions: 10'10" x 8'6"  
Area: 92 sq. ft  
Counted as living area: Yes

Heated: Yes  
Finished: Yes  
Enclosed: Yes  
Contiguous: Yes  
Permitted: Yes  
Wet space: No  
Addition: No  
Conversion: No

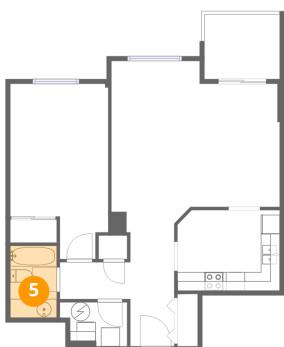
### 4 Floor 1 - Foyer



Dimensions: 12'1" x 14'2"  
Area: 172 sq. ft  
Counted as living area: Yes

Heated: Yes  
Finished: Yes  
Enclosed: Yes  
Contiguous: Yes  
Permitted: Yes  
Wet space: No  
Addition: No  
Conversion: No

### 5 Floor 1 - Bath

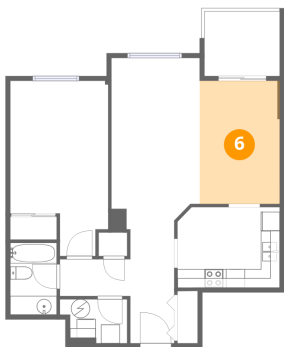


Dimensions: 4'11" x 7'7"  
Area: 37 sq. ft  
Counted as living area: Yes

Heated: Yes  
Finished: Yes  
Enclosed: Yes  
Contiguous: Yes  
Permitted: Yes  
Wet space: Yes  
Addition: No  
Conversion: No

215 Parkdale Avenue, Hintonburg, Tunney's Pasture, Ottawa,  
Ontario, Canada, K1Y 4T8, 1403

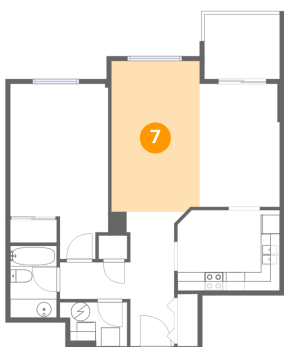
## 6 Floor 1 - Dining Area



Dimensions: 8'6" x 13'0"  
Area: 110 sq. ft  
Counted as living area: Yes

Heated: Yes  
Finished: Yes  
Enclosed: Yes  
Contiguous: Yes  
Permitted: Yes  
Wet space: No  
Addition: No  
Conversion: No

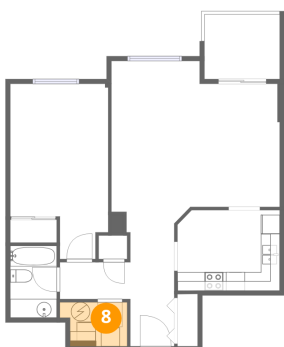
## 7 Floor 1 - Living Room



Dimensions: 9'4" x 15'11"  
Area: 149 sq. ft  
Counted as living area: Yes

Heated: Yes  
Finished: Yes  
Enclosed: Yes  
Contiguous: Yes  
Permitted: Yes  
Wet space: No  
Addition: No  
Conversion: No

## 8 Floor 1 - Utility



Dimensions: 7'1" x 4'8"  
Area: 33 sq. ft  
Counted as living area: Yes

Heated: Yes  
Finished: Yes  
Enclosed: Yes  
Contiguous: Yes  
Permitted: Yes  
Wet space: No  
Addition: No  
Conversion: No