

Home data report

5424 Quail Ridge Court, Roanoke, Virginia, United States



Total Area: 2654 sq. ft

1st Floor: 2319 sq. ft, 2nd Floor: 335 sq. ft

Excluded: Porch 129 sq. ft, Walls: 173 sq. ft

Property summary

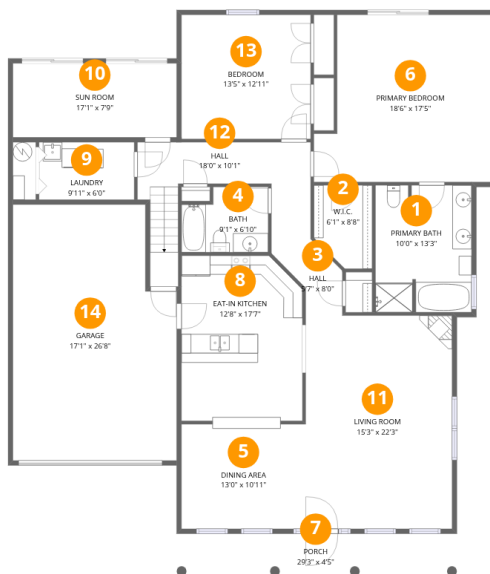
 **2** Floors

 **3** Bedrooms

 **2** Bathrooms

 **1** Garages

5424 Quail Ridge Court, Roanoke, Virginia, United States



Room dimensions

Floor 1

Total:2319sqft Excluded: 129sqft

#		Dimensions	sqft	Counted as living area
1	Primary Bath	10'0" x 13'3"	133 sq. ft	Yes
2	W.I.C.	6'1" x 8'8"	53 sq. ft	Yes
3	Hall	5'7" x 8'0"	45 sq. ft	Yes
4	Bath	9'1" x 6'10"	62 sq. ft	Yes
5	Dining Area	13'0" x 10'11"	141 sq. ft	Yes
6	Primary Bedroom	18'6" x 17'5"	323 sq. ft	Yes
7	Porch	29'3" x 4'5"	129 sq. ft	No
8	Eat-in Kitchen	12'8" x 17'7"	222 sq. ft	Yes
9	Laundry	9'11" x 6'0"	60 sq. ft	Yes
10	Sun Room	17'1" x 7'9"	132 sq. ft	Yes
11	Living Room	15'3" x 22'3"	340 sq. ft	Yes

Home data report

5424 Quail Ridge Court, Roanoke, Virginia, United States

#		Dimensions	sqft	Counted as living area
12	Hall	18'0" x 10'1"	182 sq. ft	Yes
13	Bedroom	13'5" x 12'11"	174 sq. ft	Yes
14	Garage	17'1" x 26'8"	456 sq. ft	Yes



Room dimensions

Floor 2

Total: 335 sqft

Excluded: 0 sqft

#		Dimensions	sqft	Counted as living area
15	Bedroom	14'0" x 28'6"	399 sq. ft	Yes
16	Hall	2'11" x 3'3"	10 sq. ft	Yes

1 Floor 1 - Primary Bath



Dimensions: 10'0" x 13'3"
Area: 133 sq. ft
Counted as living area: Yes

Heated: Yes
Finished: Yes
Enclosed: Yes
Contiguous: Yes
Permitted: Yes
Wet space: Yes
Addition: No
Conversion: No

2 Floor 1 - W.I.C.



Dimensions: 6'1" x 8'8"
Area: 53 sq. ft
Counted as living area: Yes

Heated: Yes
Finished: Yes
Enclosed: Yes
Contiguous: Yes
Permitted: Yes
Wet space: No
Addition: No
Conversion: No

3 Floor 1 - Hall



Dimensions: 5'7" x 8'0"
Area: 45 sq. ft
Counted as living area: Yes

Heated: Yes
Finished: Yes
Enclosed: Yes
Contiguous: Yes
Permitted: Yes
Wet space: No
Addition: No
Conversion: No

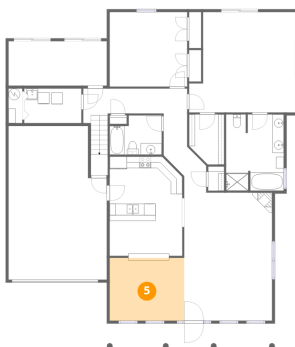
4 Floor 1 - Bath



Dimensions: 9'1" x 6'10"
Area: 62 sq. ft
Counted as living area: Yes

Heated: Yes
Finished: Yes
Enclosed: Yes
Contiguous: Yes
Permitted: Yes
Wet space: Yes
Addition: No
Conversion: No

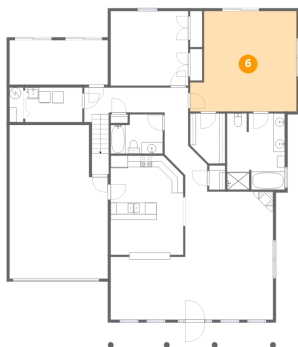
5 Floor 1 - Dining Area



Dimensions: 13'0" x 10'11"
Area: 141 sq. ft
Counted as living area: Yes

Heated: Yes
Finished: Yes
Enclosed: Yes
Contiguous: Yes
Permitted: Yes
Wet space: No
Addition: No
Conversion: No

6 Floor 1 - Primary Bedroom



Dimensions: 18'6" x 17'5"
Area: 323 sq. ft
Counted as living area: Yes

Heated: Yes
Finished: Yes
Enclosed: Yes
Contiguous: Yes
Permitted: Yes
Wet space: No
Addition: No
Conversion: No

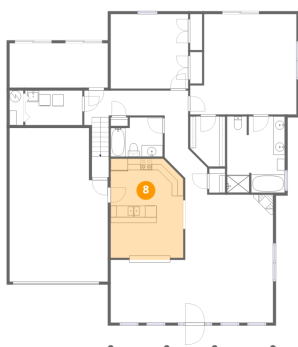
7 Floor 1 - Porch



Dimensions: 29'3" x 4'5"
Area: 129 sq. ft
Counted as living area: No

Heated: No
Finished: No
Enclosed: No
Contiguous: Yes
Permitted: Yes
Wet space: No
Addition: No
Conversion: No

8 Floor 1 - Eat-in Kitchen



Dimensions: 12'8" x 17'7"
Area: 222 sq. ft
Counted as living area: Yes

Heated: Yes
Finished: Yes
Enclosed: Yes
Contiguous: Yes
Permitted: Yes
Wet space: No
Addition: No
Conversion: No

9 Floor 1 - Laundry



Dimensions: 9'11" x 6'0"
Area: 60 sq. ft
Counted as living area: Yes

Heated: Yes
Finished: Yes
Enclosed: Yes
Contiguous: Yes
Permitted: Yes
Wet space: No
Addition: No
Conversion: No

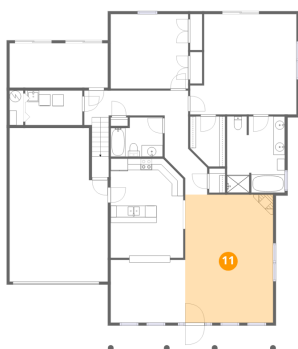
10 Floor 1 - Sun Room



Dimensions: 17'1" x 7'9"
Area: 132 sq. ft
Counted as living area: Yes

Heated: Yes
Finished: Yes
Enclosed: Yes
Contiguous: Yes
Permitted: Yes
Wet space: No
Addition: No
Conversion: No

11 Floor 1 - Living Room



Dimensions: 15'3" x 22'3"
Area: 340 sq. ft
Counted as living area: Yes

Heated: Yes
Finished: Yes
Enclosed: Yes
Contiguous: Yes
Permitted: Yes
Wet space: No
Addition: No
Conversion: No

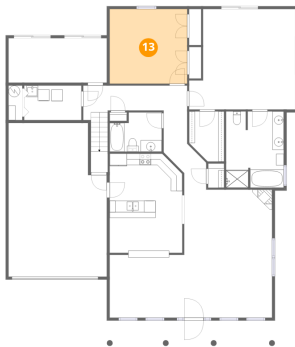
12 Floor 1 - Hall



Dimensions: 18'0" x 10'1"
Area: 182 sq. ft
Counted as living area: Yes

Heated: Yes
Finished: Yes
Enclosed: Yes
Contiguous: Yes
Permitted: Yes
Wet space: No
Addition: No
Conversion: No

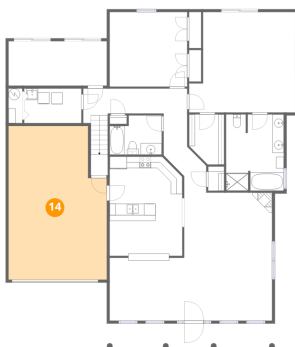
13 Floor 1 - Bedroom



Dimensions: 13'5" x 12'11"
Area: 174 sq. ft
Counted as living area: Yes

Heated: Yes
Finished: Yes
Enclosed: Yes
Contiguous: Yes
Permitted: Yes
Wet space: No
Addition: No
Conversion: No

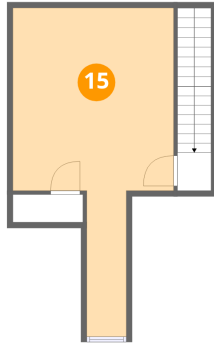
14 Floor 1 - Garage



Dimensions: 17'1" x 26'8"
Area: 456 sq. ft
Counted as living area: No

Heated: No
Finished: Yes
Enclosed: Yes
Contiguous: Yes
Permitted: Yes
Wet space: No
Addition: No
Conversion: No

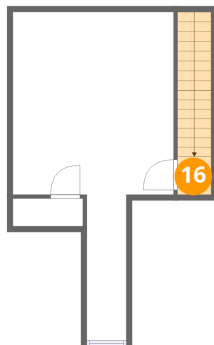
15 Floor 2 - Bedroom



Dimensions: 14'0" x 28'6"
Area: 399 sq. ft
Counted as living area: Yes

Heated: Yes
Finished: Yes
Enclosed: Yes
Contiguous: Yes
Permitted: Yes
Wet space: No
Addition: No
Conversion: No

16 Floor 2 - Hall



Dimensions: 2'11" x 3'3"
Area: 10 sq. ft
Counted as living area: Yes

Heated: Yes
Finished: Yes
Enclosed: Yes
Contiguous: Yes
Permitted: Yes
Wet space: No
Addition: No
Conversion: No