

HALL
11'5" x 18'4"

RECREATION ROOM
25'1" x 11'6"

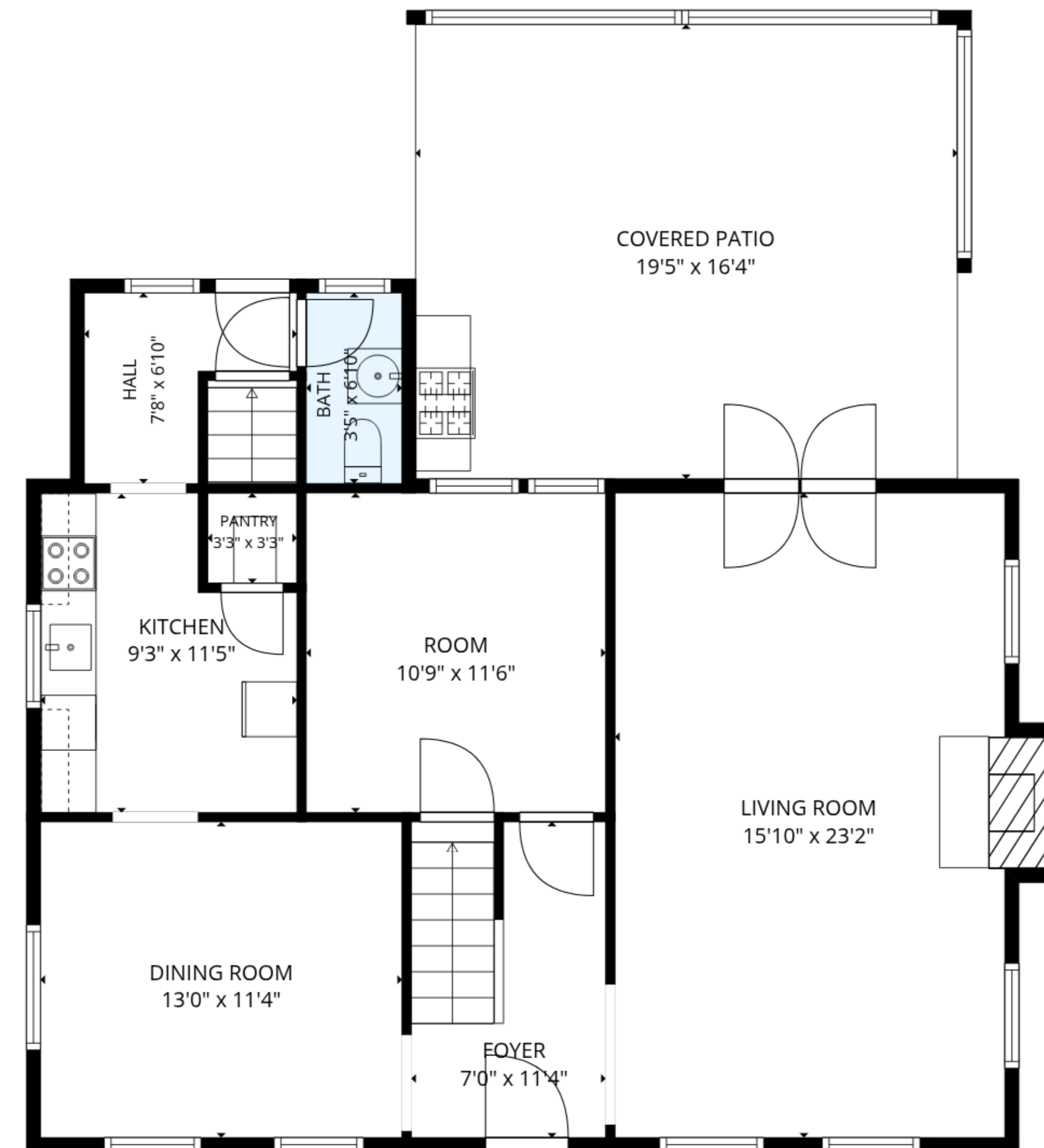
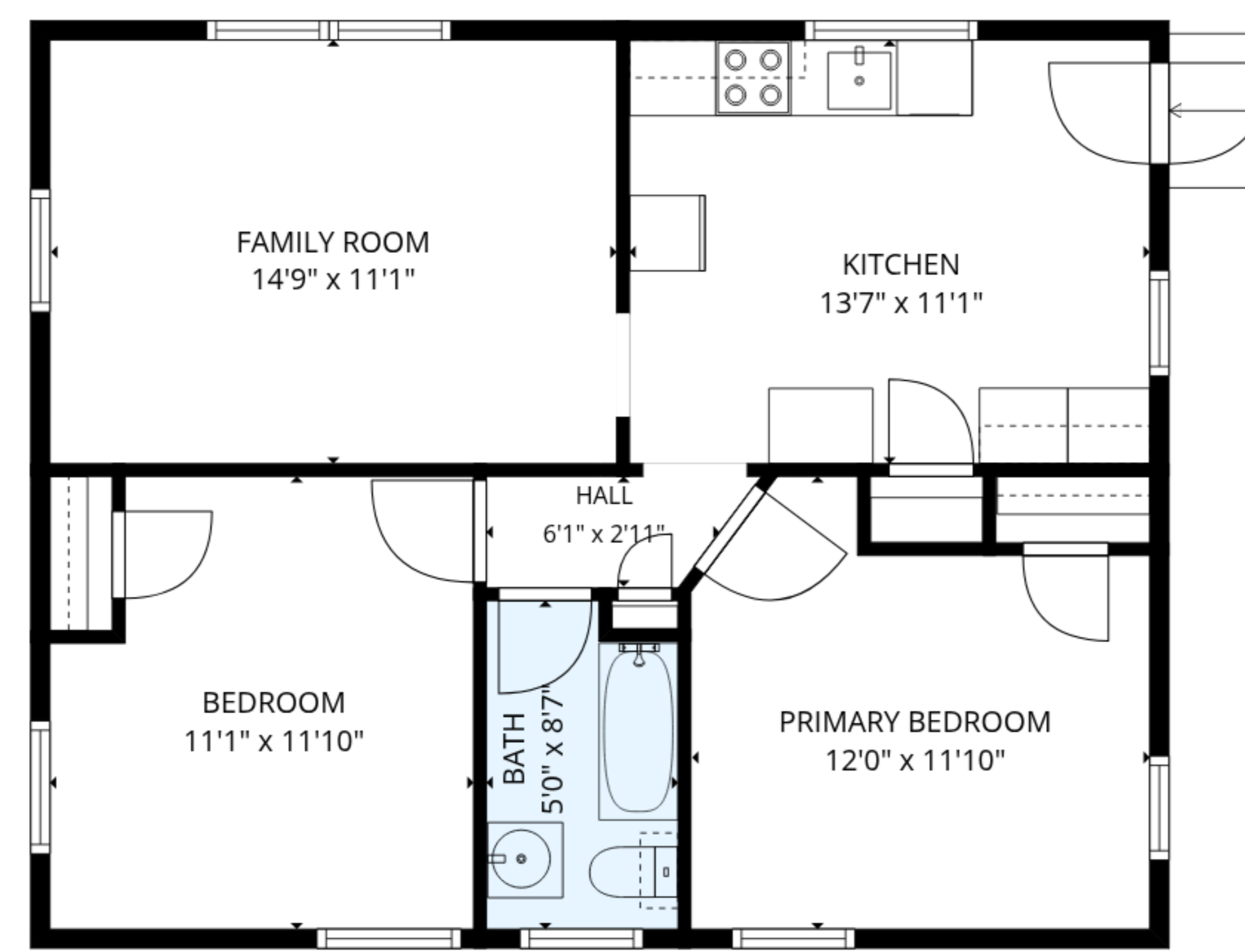
BASEMENT
34'8" x 11'4"

TOTAL: 3011 sq. ft

Basement: 874 sq. ft, 1st floor: 1555 sq. ft, 2nd floor: 582 sq. ft

EXCLUDED AREAS: COVERED PATIO: 318 sq. ft, FIREPLACE: 11 sq. ft, WALLS: 256 sq. ft

MEASUREMENTS ARE DEEMED RELIABLE BUT ARE NOT GUARANTEED.

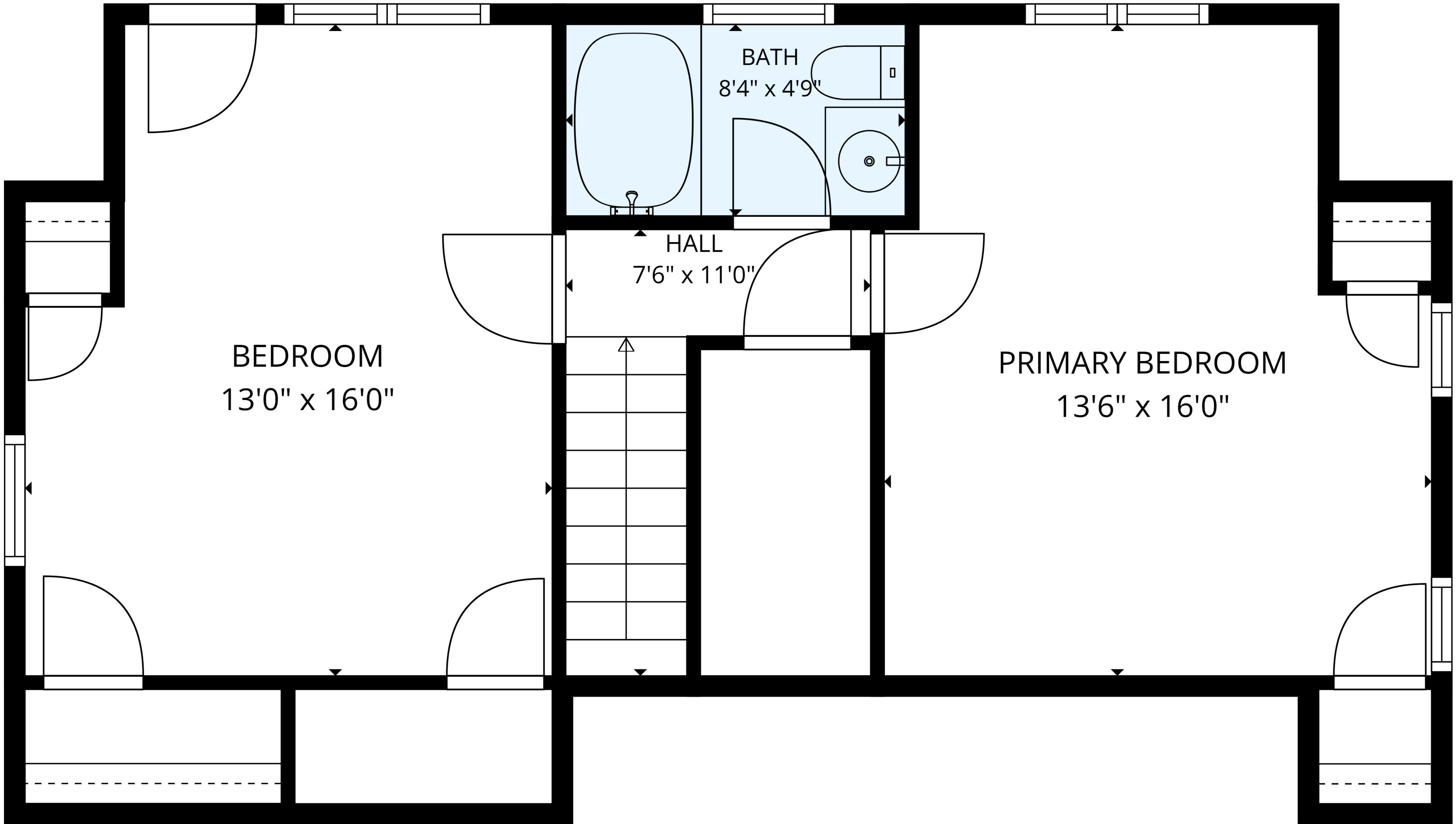


TOTAL: 3011 sq. ft

Basement: 874 sq. ft, 1st floor: 1555 sq. ft, 2nd floor: 582 sq. ft

EXCLUDED AREAS: COVERED PATIO: 318 sq. ft, FIREPLACE: 11 sq. ft, WALLS: 256 sq. ft

MEASUREMENTS ARE DEEMED RELIABLE BUT ARE NOT GUARANTEED.

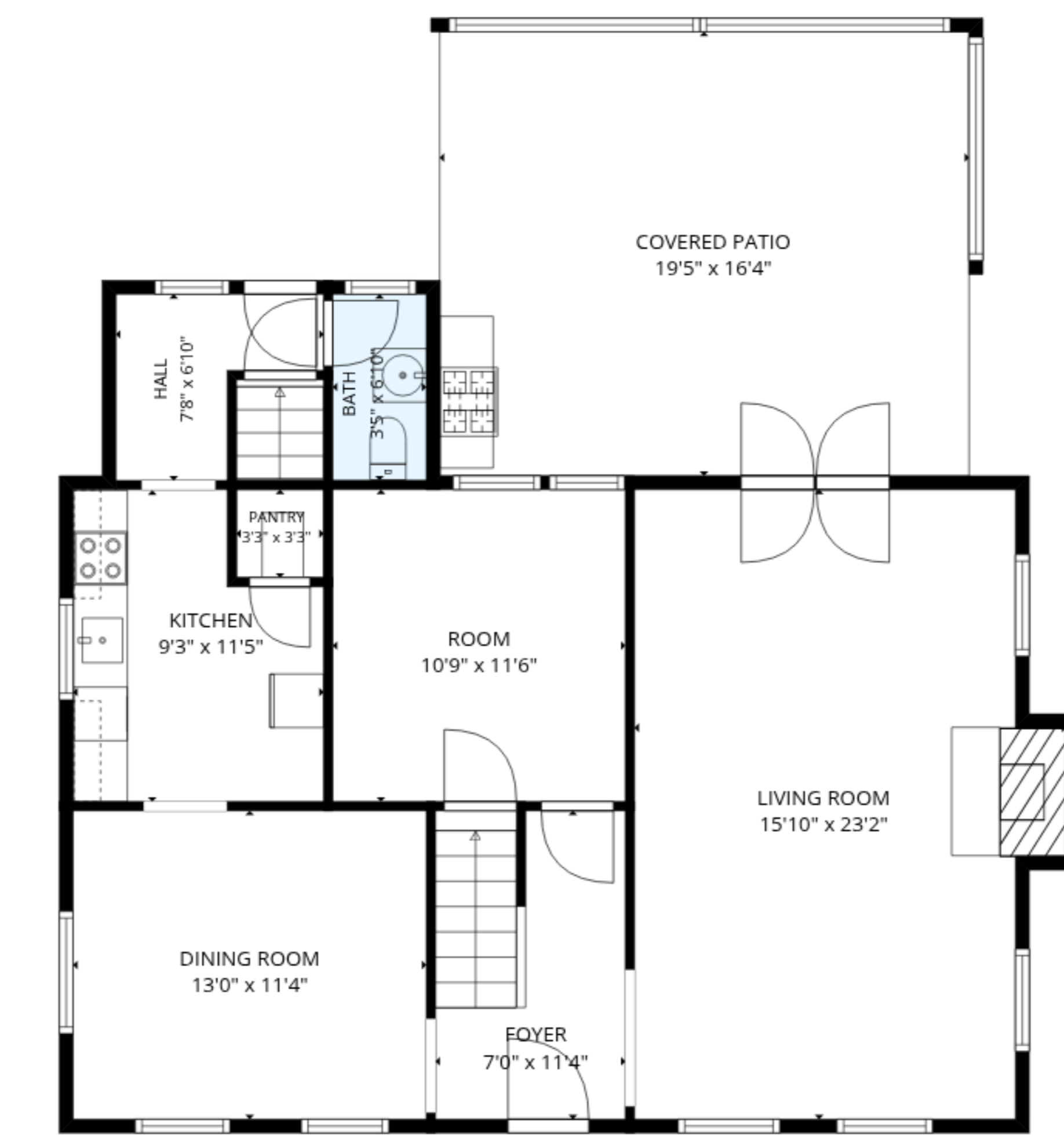
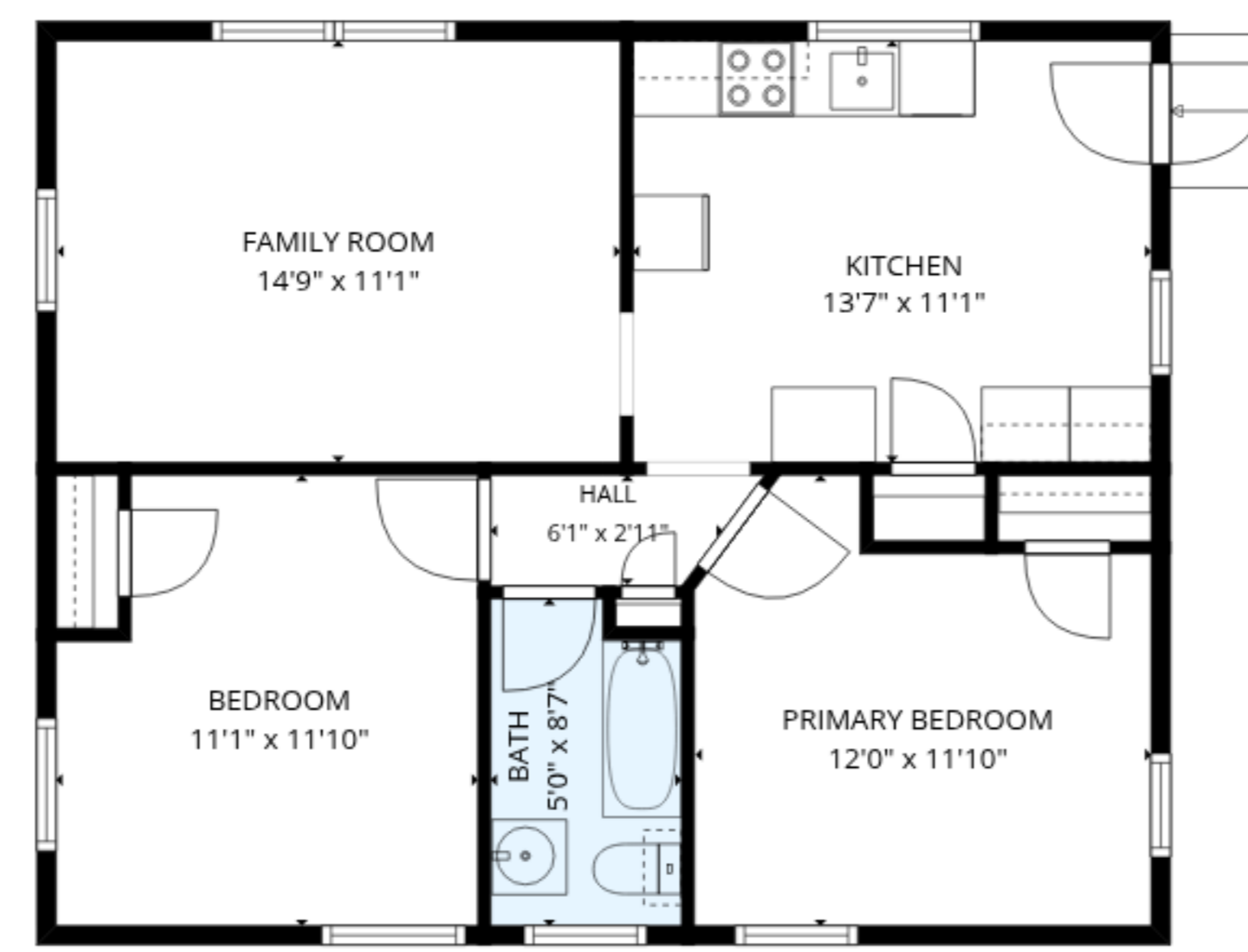


TOTAL: 3011 sq. ft

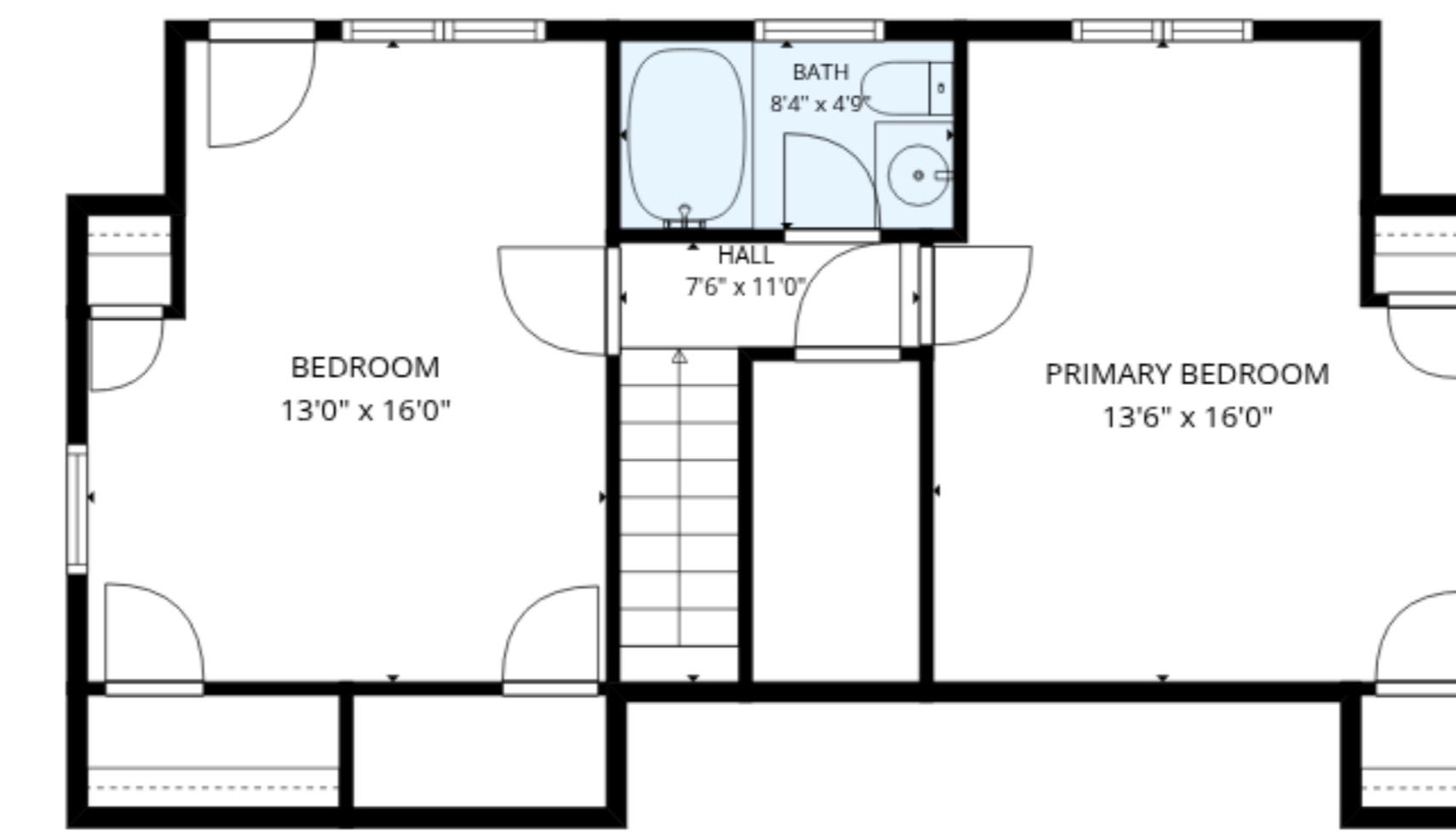
Basement: 874 sq. ft, 1st floor: 1555 sq. ft, 2nd floor: 582 sq. ft

EXCLUDED AREAS: COVERED PATIO: 318 sq. ft, FIREPLACE: 11 sq. ft, WALLS: 256 sq. ft

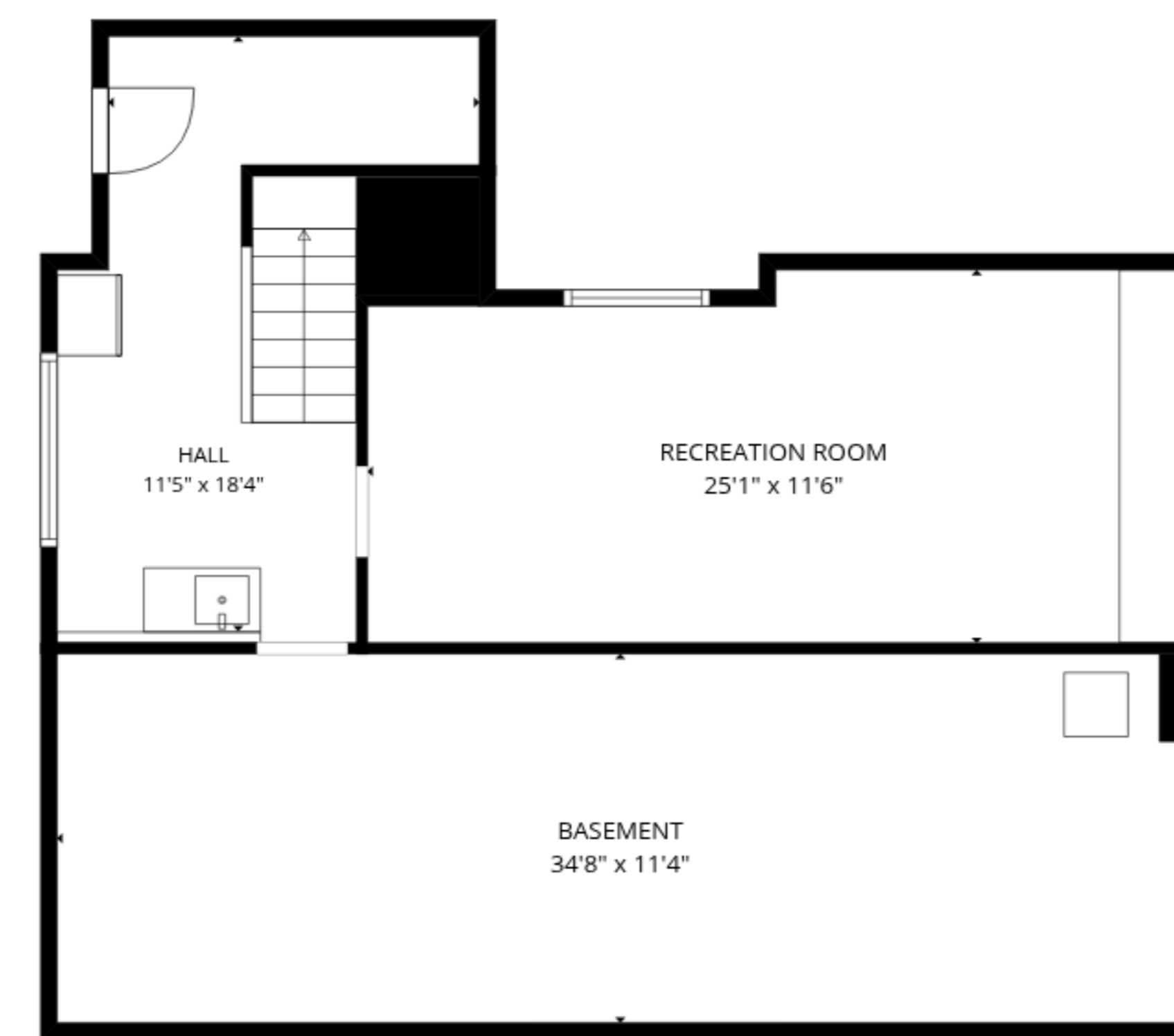
MEASUREMENTS ARE DEEMED RELIABLE BUT ARE NOT GUARANTEED.



1st floor



2nd floor



Basement

TOTAL: 3011 sq. ft

Basement: 874 sq. ft, 1st floor: 1555 sq. ft, 2nd floor: 582 sq. ft

EXCLUDED AREAS: COVERED PATIO: 318 sq. ft, FIREPLACE: 11 sq. ft, WALLS: 256 sq. ft

MEASUREMENTS ARE DEEMED RELIABLE BUT ARE NOT GUARANTEED.